



GB

ADVENTURE REGION AROUND THE

Nationalpark Eifel

THE LEISURE GUIDE **2022**

www.erlebnis-region.de

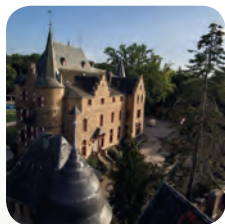
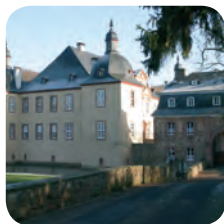
Mechernich-Eifel.de

Stadt am Nationalpark Eifel



Mechernich ist der ideale Ausgangspunkt für erlebnisreiche Urlaubstage in der Eifel.

Hier, am Eingang zum Nationalpark Eifel, ist die Vielzahl der beeindruckenden Sehenswürdigkeiten, Denkmäler und der interessanten Freizeiteinrichtungen auf so engem Raum einzigartig.



Telefon 02443-494322 · www.mechernich-eifel.de

Nationalpark Eifel

THE LEISURE GUIDE 2022

Dear readers,

Time outs from everyday life are important for our wellbeing; these leisure times provide for replenishment of your own energy reserves.

They make you forget the stress caused by work or other stressful life situations and simply do you good. Annual publication of the popular leisure guide is our contribution to your wellbeing. Right now you are holding the current edition in your hands; we are very pleased to be able to present a wide range of excursion destinations in the region. All our advertisers have made it their business to offer you the most delightful and varied timeout! Have fun exploring a colourful range of leisure time activities!

Before starting your journey, please inform yourself on the current possible restrictions caused by the continuing pandemic.

Your leisure guide team

Publisher: Weiss-Verlag GmbH & Co.KG in co-operation with:
Monschauer Land Touristik e. V.
 Seeufer 3 · 52152 Simmerath
 Phone +49 (0) 2473/9377-0
 info@monschauerland.de
 www.monschauerland.de
Rureifel-Tourismus e. V.
 Nationalpark-Tor
 An der Laag 4 · 52396 Heimbach
 Phone +49 (0) 2446/805 790
 info@rureifel-tourismus.de
 www.rureifel-tourismus.de

Nordeifel Tourismus GmbH
 Bahnhofstraße 13 · 53925 Kall
 Phone +49 (0) 2441/994 570
 info@nordeifel-tourismus.de
 www.nordeifel-tourismus.de

Concept/design:
 info@w-design.biz, 52152 Simmerath
Publisher: Weiss-Verlag GmbH & Co.KG
 Hans-Georg-Weiss-Straße 7
 52156 Monschau
Management director:
 Martina Schmitz, Alexander Lenders
Head of publishing:
 Andreas Rohfleisch

NATIONALPARK EIFEL

WORTH SEEING

FAMILY & ADVENTURE

WATER & WELLNESS

LAND & EXPERIENCE



Nationalpark Eifel, experiencing nature, observing animals, discovering plants, finding rest.



Offers for families, suitable for children, offers fun and entertainment for all in the family.



Great panoramic views, impressive mountains and elevated plains, steep gorges and smooth valleys.



Point of interest of historical or cultural importance, rarely mentioned in history books.



Barrier-free



The location of the individual companies is shown on the map inside.

The Eifel National Park

Virgin forest of tomorrow



In the Eifel National Park, extensive forests and open landscapes are on their way back to wilderness. Take part in experiencing this exciting process! Photo: D. Ketz

In accordance with the motto „Let nature be nature“, something is happening in the Eifel National Park that is unique on this scale in North Rhine-Westphalia: Here, nature can unfold freely over large areas according to its own laws. Experience the exciting process of newly emerging wilderness at first hand! Observe wild animals, wander through natural mixed beech

forests and enjoy panoramic views of impressive lakes or over the open grasslands of the Dreiborn plateau.

In some areas, humans can still intervene until 2034 to support forest development, e.g., by planting beech trees under spruce trees or by removing spruce trees in stream valleys.

Eifel National Park and Corona

The Eifel National Park Authority asks people interested in the National Park to avoid the main visitor areas in the protected area.

It is difficult to keep the required minimum distance, especially at the visitor hotspots (Wilder Kermeter/„Der Wilde Weg“, Wüstung Wollseifen/Walberhof and along the reservoirs) and on the narrow hiking trails of the National Park.

www.nationalpark-eifel.de

The Eifel National Park

Area: 11.000 ha

Established: 2004 as a development national park. From 2034 at the latest, process protection will apply to over 75 % of the area.

Animal and plant species: more than 10,960, of which almost 2,500 are endangered: For example, wildcat, middle spotted woodpecker, wall lizard, wart biter, branchless grass lily, German hound's tongue.

Trail network: 240 km of hiking trails, including 110 km of cycle paths, 65 km of bridle paths, 2 cross-country ski trails



You can experience the National Park on 240 kilometres of hiking trails. Photo: D. Ketz

Wildcat, black stork and co.

Over 2,500 endangered animal and plant species live in the Eifel National Park. The beaver builds its lodges in the waters of the National Park region and kites circle above the reservoirs. Brook trout, lampreys and minnows covert in the low mountain streams. The black stork particularly likes to search for food in shallow puddles. The wildcat is also widespread throughout the National Park. It lives mostly hidden in the forests. The National Park and its surroundings are home to a significant red deer population. With a little luck and patience, they can be observed in the wild.

Dark Sky Park Eifel National Park

Experiencing stars and constellations intensively is hardly possible in many places. In the Eifel National Park, however, the Milky Way can be seen with the naked eye. The National Park has been recognised as an International Dark Sky Park since 2014. The observatory regularly offers programmes to experience the starry night sky (See page 17).

Experience the National Park on your own initiative

You can explore the National Park on your own initiative on a network of hiking, cycling, bridle paths and cross-country ski trails totalling 240 kilometres. Whether along the Wilderness Trail, the Creation Trail or one of the signposted themed hiking trails. In addition, there are a total of 68 elaborate tour suggestions under "Outdooractive" and further offers are found in "Komoot". For example, the only seven kilometres long hike „Ruhe-Tankstelle“ is one of our top tips on "Outdooractive". In the digital hiking portals, you will also find trails that run away from the main visitor areas and thus offer the opportunity to explore the Eifel National Park largely undisturbed. For example, the only seven-kilometre-long hike „Ruhe-Tankstelle“ is one of our top tips on „Outdooractive“. The approximately two-hour tour leads from the Mariawald Monastery to more remote forest areas of the National Park. There you can experience near-natural and newly emerging forest images. Small crossing streams, dense forest and also open pastures make this tour varied. The tour is 7.1 kilometres long and takes about two hours.

Wilderness-Trail

The Wilderness Trail leads in four daily stages along the entire length of the Eifel National Park. On hiking trails between 18 and 25 kilometres in length, the entire diversity of habitats in the National Park can be discovered. (See page 97)



Mariawald Monastery is the starting point for the „Ruhe-Tankstelle“ tour - described in "Outdooractive". You can get to Mariawald Monastery with the bus lines Mäxchen (M) and line 231. Photo: D. Ketz



The meadows of the Dreiborn plateau provide an important habitat for many butterfly species, including the swallowtail. Photo: A. Pardey



Hikers will find exciting forest images in the remote forest corners of the Eifel National Park. Photo: D. Ketz

Creation Path

At ten stations, the 2.5 kilometres long creation path „On the trail of life“ provides a spiritual and meditative approach to nature. A walk-through labyrinth invites you to take the „path to finding yourself“.

The entrance to the Creation Path is in Simmerath-Erkensruhr/Hirschrott. Parking is available at the Finkenaue park 1.5 kilometres away.

Bird Watching Station

Between Gemünd and the Urft dam, an observation station invites you to explore the wide view of the dam and its birdlife through telescopes free of charge. With a bit of luck, grey herons, great crested grebes and cormorants can be observed there.

An information board that can be accessed by wheelchairs provides information about the landscape and birdlife on site.

Vogelsang, Dreiborn Plateau and Wollseifen

Surrounded by the Eifel National Park lies the former Nazi „order castle“ Vogelsang. After the end of the war, the Belgian military took over the site and established a 3,300-hectare military training area around Vogelsang. The former village of Wollseifen lies in the middle of the Dreiborn plateau. At that time, 120 families had to leave their homes within a few weeks. Today, the wide plains of the Dreiborn plateau can be experienced by visitors on a marked network of paths. An exhibition in the old school recalls the fateful history of the people.

From April to October, carriages shuttle between Vogelsang and Wollseifen every first and third Sunday of the month. People in wheelchairs and their companions are provided access by means of a ramp.



With a little luck, you can observe the bird world at the Bird Watching Station. Photo: T. Wagner

Guided hikes

Ranger tours

Well-versed in the secrets of nature, National Park rangers lead tours of varying length and difficulty. If you are interested in a ranger tour, please visit www.nationalpark-eifel.de to find out about the current offers.

Group tours

Whether it's a group of friends, a club, a company, a children's or senior citizens' group - all groups are in good hands with the volunteer forest guides.



In the Eifel National Park, nature is gradually returning to its very own cycle of becoming and passing away. Photo: M. Weisgerber

For an expense allowance of 55 Euros per group for three hours, the nature and landscape guides, who are specially certified for the National Park, will lead you on the routes you want and that suit you. Hiking tours with the forest guides can be booked through the Eifel National Park Administration. Please visit www.nationalpark-ifel.de/waldfuehrer for information on special regulations due to the Corona pandemic.

Family days

A colourful hands-on programme awaits all nature-loving families on short hikes. The aim is to playfully read animal tracks, solve plant puzzles, experience nature with all your senses or track down wild places in the National Park. For a fee, the National Park administration can also book individual family tours accompanied by a forest guide, e.g. for a child's birthday. Further information: www.nationalpark-eifel.de/familientour

Offers for school classes, children's and youth groups

Whether barrier-free educational programmes or adventure tours tailored to the individual school classes' lessons - the national park administration is happy to gear its offers towards the interests and needs of the group. On the half-day tours, they are integrated into the programme through games and activities. The National Park Authority also offers free educational events for students and school groups.

School classes can spend entire days at the barrier-free environmental education facility „Wildnis-Werkstatt Düttling“. At the Naturerlebnistreff (NEsT) in the youth forest home in Kall-Urft, school classes learn about the diversity of the forest ecosystem in programmes lasting several days.

In addition, the Eifel National Park Centre offers various events to accompany the barrier-free adventure exhibition „Wildnis(t)räume“.



There are great offers for children and young people in the Eifel National Park. But you can also experience the forest nature on your own. Photo D. Ketz

Barrier-free offers

Since the establishment of the large protected area, the National Park administration has pursued the goal of making the Eifel National Park region accessible to people with and without

handicaps: Ranger tours with sign language translation, barrier-free exhibitions in the National Park Centre and in the National Park Gates, and National Park hosts qualified in accessibility. Information on accessibility at www.nationalpark-eifel.de/barrierefrei



Barrier-free exploration in the large adventure exhibition „Wildnis(t)räume“ in the Eifel National Park Centre. Photo: D. Ketz

Wilder Kermeter

The barrier-free nature experience area “Wilder Kermeter” enables people with and without handicaps to experience nature on their own: 4.7 kilometres of barrier-free, finely gravelled paths provide access to the internationally significant mixed red beech forests and two popular vantage points in the forest area of the „Wilder Kermeter“.

Arrival & accommodation

National Park Host

Restaurants, hotels, guest-houses, youth hostels, holiday homes and campsites have been certified as National Park hosts. These establishments meet various



quality and environmental criteria and offer information about the protected area. In addition, some National Park hosts have developed barrier-free offers.

These have been audited by the National Coordination Office Tourism for All (NatKo). The National Park hosts are listed on a map in the middle of this brochure.



Some National Park hosts offer the popular Eifel National Park Adventure Region Guest Card. Photo: M. Weisgerber

Experience nature - free of charge with the GästeCard (guest card)

There is the possibility of exploring the National Park region free of charge by bus and train. As an overnight guest in participating businesses, visitors receive a free guest card (GästeCard) for the duration of their stay. This includes the use of buses and trains in the entire adventure region and beyond in the area of the Rhine-Sieg Transport Association (VRS) and the Aachen Transport Association (AVV).

With the Eifel National Park Adventure Region guest card (GästeCard), buses and trains can be

used free of charge. In addition, overnight guests with the guest card receive discounts on admission tickets for sights and leisure facilities as well as free additional services at excursion destinations. <https://eifel-gaestecard.de/>



The adventure exhibition „Wilderness Dreams“ offers all kinds of exciting nature puzzles. Photo: D. Ketz

Further Information

Exhibitions

The Eifel National Park Centre in Vogelsang IP has a large exhibition for you to experience; the adventure exhibition „Wildnis(t)räume“. Fascination on 2,000 square metres for young and old, barrier-free and it can be experienced multilingual (see page 11).

The National Park Gates in Simmerath-Rurberg, Heimbach, Monschau-Höfen and Nideggen offer tourist services and small exhibitions on various topics related to the Eifel National Park. More information on page 12-13.



With the GuestCard, visitors can take buses and trains use it for free. Photo: A. Simantke



**Nationalpark
Eifel**

Contact

National Park Authority

Urfteestraße 34

53937 Schleiden-Gemünd

Tel.: +49(0) 2444/9510-0

Fax: +49(0) 2444/9510-85

info@nationalpark-eifel.de

www.nationalpark-eifel.de

VOGELSANG IP

Exhibition and education centre with NS documentation and
Eifel National Park Centre at the International Square



Forum Vogelsang IP is located in the middle of the Eifel National Park in the listed buildings of the former Nazi „Ordensburg“. After the Second World War, the complex was a military training area for more than five decades. Since 2006 a new location has been developing: Vogelsang IP as an „International Place“ for tolerance, diversity and peaceful coexistence.

Respect, willingness to talk and openness are values to which all local institutions are committed. Together with many regional partners in the district of Euskirchen, Vogelsang IP stands up against right-wing extremism and racism.

A day at the Place of Remembrance on the premises of Vogelsang IP becomes a short holiday between historical experience and nature experience, with a lot of „being outside“ and adequate protection and distance possibilities inside.

The centrepiece is the exhibition, education and visitor centre with two large permanent exhibitions, which provide contemporary, barrier-free and quadrilingual access to the central themes of the site - history and nature. The history and significance of this Nazi perpetrator site are vividly explained during daily guided tours of the site.

The exhibition „Bestimmung: Herrenmensch. NS-Ordensburg zwischen Faszination und Verbrechen“ (Destination: Herrenmensch. NS Order Castles between Fascinati-



on and Crime) takes a look at concrete perpetrator actions and the perpetrators themselves and their convictions, but also opens up the perspectives and voices of victims.

Vogelsang ip is a popular, because authentic extracurricular learning place, as well as an extraordinary event and conference location. There are also many possibilities for company outings and corporate events, for example in combination with the Vogelsang gastronomy.

Opening hours of the Forum Vogelsang IP with the permanent exhibitions and the gastronomy: Daily from 10:00 a.m. to 5:00 p.m., Christmas Eve and New Year's Eve from 10:00 a.m. to 2:00 p.m., free entry to the Vogelsang IP premises, parking 2 Euros.

Guided tours of the grounds daily at 2:00 p.m., Sat, Sun and public holidays at 11:00 a.m. and 2 p.m., tower ascents with 360-degree views from April to October daily, individual group bookings and educational programmes by arrangement.

Information and booking:

Tel. +49 (0) 2444/91579-0

Fax +49 (0) 2444/91579-29

or per E-Mail an: info@vogelsang-ip.de

or buchung@vogelsang-ip.de

www.vogelsang-ip.de



„Dreams of Wilderness“

An amazing barrier-free and interactive exhibition



In the **Eifel National Park Centre** at the „Internationalen Platz“ Vogelsang IP, guests can experience nature with all their senses. Surrounded by dense mixed deciduous forests, the modern visitor centre above the Urftsees is home to the interactive exhibition „Wilderness Spaces“. A great place to go whatever the weather. Go on, „dream of the wilderness“!

Magic of the Wild

The exhibition, displayed over 2,000 square metres, follows the natural circle of life in the Eifel National Park. Starting with a walk through a beech tree „From the crown to the root“, visitors are guided through fascinating water worlds, see life through the eyes of an insect and immerse themselves in the never-ending biodiversity of natural beech forests. There are interesting stops along the way plus some great panoramic viewpoints overlooking the national park where you can sit and soak it all in for a while.

The interactive stations are specially designed to be touched and tried out, like the models of animals, the scents of plants and the soft fur of a beaver. They make for an exciting experience.

For everyone

The „Wildness Spaces“ are great for everyone! People of all ages, families with children, schools, foreign-speaking visitors and people with disabilities can explore the exhibition eit-



© Fotograf: Martin Weisgerber

her on their own or on a guided tour with the ranger.

All the rooms and sanitary facilities have wheelchair access. Tactile and auditory guidance systems are available. The main content is translated in several languages as well as in plain text and braille. Multimedia guides also offer German sign language. The team at the National Park Centre Eifel will be happy to advise you.

Opening times:

Every day from 10am to 5pm

Daily guided tour without prior booking 2pm

Bookings:

Individual tours of the exhibition - also in combination with hikes, children's birthday parties and school outings

For further information and prices visit:

www.nationalparkzentrum-eifel.de

Nationalpark
Zentrum Eifel



Contact:

National Park Centre Eifel

Forum Vogelsang IP

Vogelsang 70

D-53937 Schleiden

Tel.: +49 (0) 2444/91574-0

info@nationalparkzentrum-eifel.de



National Park gates

Four exhibitions with interesting themes around
the Eifel National Park

Four National Park Gates provide information on fauna and flora in the Eifel National Park. In addition each of the information offices provides a touristic service area, in which extensive information on leisure time and adventure offers of the region are available. At free entrance the **information offices are open from April- Oct., daily from 9:00 a.m. – 1:00 p.m., 1:30 p.m. – 5:00 p.m., from Nov. – March daily: 10:00 a.m. – 1:00 p.m., 1:30 p.m. – 4:00 p.m.,** Christmas Day and New Year closed. Information on accessibility of the National Park Gates is obtained in the individual information offices or in the Internet under **www.nationalpark-eifel.de**



National Park Gate Rurberg

Discover still waters and streams of the Eifel National Park. And in Simmerath visit the exhibition "Lebensadern der Natur" (lifelines of nature) Follow exceptional animal tracks leading you through natural and cultural history. Experience the fascinating water landscape from the perspective of a kite and stroke a beaver. Also crayfish and pearl oyster provide insight into their life and show you the purpose of national parks. Exhibition literature is available in four languages for download on your Smartphone.

National Park Gate Rurberg

Rursee-Touristik GmbH · Seeufer 3
52152 Simmerath-Rurberg
Tel. +49 (0) 2473/93 77 0
Fax +49 (0) 2473/93 77 20
info@rursee.de · www.rursee.de



National Park Gate Nideggen

Explore the "Schatzkammer der Natur" (treasury of nature). In the focus of the exhibition are ideas, which human beings imitated from animals and plants: insect legs serve as a model for the development of vehicles. A school of fish shows possible solutions for trouble-free logistics. As a contrast you can listen to roaring bears, hooting owls and howling wolves Blind and visually impaired people are guided through the exhibition by a barrier-free guiding system. Audio equipment in German, Dutch, French and English can be rented.

National Park Gate Nideggen

Im Effels 10 · 52385 Nideggen
Tel. +49 (0) 2427/3301150
Fax +49 (0) 2427/3301295
nideggen@rureifel-tourismus.de
www.rureifel-tourismus.de



National Park Gate Heimbach

Central element of the exhibition "Waldgeheimnisse" (forest secrets) in the railway station Heimbach is an accessible audio drama, which leads visitors through a beech labyrinth. As prominent National Park inhabitants feral cat and black stork disclose many secrets of nature in the Eifel National Park. Tangible preparations and explanations in braille make this exhibition an attractive offer for blind and sighted people.

National Park Gate Heimbach Rureifel Tourismus e.V.

An der Laag 4 · 52396 Heimbach
Tel. +49 (0) 2446/805 79 14
Fax +49 (0) 2446/805 79 30
heimbach@rureifel-tourismus.de
www.rureifel-tourismus.de



National Park Gate Monschau-Höfen

The exhibition in the "Bundesgolddorf" Höfen (one of the winner's of the contest "our village will be more beautiful") informs on the changing forest conditions and wild animals in the Eifel National Park. Located right in the area with the biggest occurrence of wild narcissus in Germany, also the necessary caring measures for preservation of narcissus meadows are explained. In addition Hubert vom Venn tells his very own opinion of the National Park subjects. The exhibition is multilingual and barrier-free.

National Park Gate Höfen Monschau-Touristik GmbH

Hauptstraße 72-74 · 52156 Monschau-Höfen
Tel. +49 (0) 2472/802 50 79
Fax +49 (0) 2472/802 49 77
nationalparktor@touristik.monschau.de
www.monschau.de

National Park Information Points

Here, guests receive detailed information about the Eifel National Park



Info Point Monschau

In this modern service centre there is a film running which presents the Eifel National Park and surrounding region. It is open daily and provides information about activities on offer in the National Park, hiking maps, hiking guides, tickets for events, advice and bookings for accommodation, guided tours and arrangements. |



Information Point Monschau

Monschau-Touristik GmbH
Stadtstraße 16 · 52156 Monschau
Tel. +49 (0) 2472/8048-0
www.monschau.de

Info Point Gemünd

In addition to brochures, the tourist information also offers a selection of shop items. This includes products from the Eifel brand, cycling and hiking maps and small souvenir items. Seating invite you to linger. In addition, guests can obtain further information from an information terminal. A terrain model of the Eifel National Park refers to the immediately adjacent protected area.



Information Point Gemünd

Dreiborner Str. 59
53937 Schleiden-Gemünd
Tel. +49 (0) 2441. 2011
www.nordeifel-tourismus.de

Info Point Einruhr

Refresh yourself with cool charmstone spring water directly from the well, before you get information from the National Park information point. Have a rest in the hiking station by the crackling log fire or watch a thematic film on flora and fauna of the Eifel National Park.



Information Point Einruhr

im Heilsteinhaus · Franz-Becker-Str. 2
52152 Simmerath-Einruhr
Tel. +49 (0) 2473/937717 · www.rursee.de

Info Point Zerkall

Besides numerous brochures and flyers the film presents the Eifel National Park; an ideal place for canoe tours on the Rur or an excursion into the climbing district of the Rureifel.



Information Point Zerkall

Auel 1 · 52393 Hürtgenwald-Zerkall
Tel. +49 (0) 2427/90 90 26
www.infopunkt-zerkall.de

Info Point Schmidt

St. Hubertus Church, Monschauer Str. 52385 Nideggen-Schmidt, Point of contact for guests to the National Park, meeting point for hikes, Tourist Information in the church, Films, Internet, maps and extensive publications on the Eifel National Park, Films and texts about the church of „St. Mocha“ and its special history, Illustrative models for renewable energy technology in sacred buildings.



Information Point Schmidt

Kirche St. Hubertus, Monschauer Str.
52385 Nideggen-Schmidt

Info Point „Waldhaus“

in the Open-Air Museum Kommern. Media installations and a National Park film present the large-scale protected area Eifel. Break point of the bike & hike trail „Wasserburgen-Route“.



Information Point „Waldhaus“

im LVR-Freilichtmuseum Kommern
Eickser Straße · 53894 Mechernich-Kommern
Tel. +49 (0) 2443/9 80-0

Info Point Kall

A film shows the fascination of the Eifel National Park. Information on the National Park by means of displays on touch screens. Presentation of numerous flyers and brochures.



Information Point Kall

in the train station building · Bahnhofstraße 13
53925 Kall, Tel. +49 (0) 2441/77 545

Opening times:

Monday to Friday: 6:00 a.m. – 6:00 p.m.

Saturday: 8:00 a.m. – 6:00 p.m.

Sundays and holidays 9:00 a.m. – 5:00 clockp.m.

Info Point Mechernich

in the mining museum Mechernich &
visitor's mine Grube Günnersdorf
printed media is display



Information Point Mechernich

Bleibergstraße 6 · 53894 Mechernich

Tel. +49 (0) 2443/48697

www.bergbaumuseum-mechernich.de

bergbaumuseum-mechernich@t-online.de

Opening times:

From Tuesday to Saturday: 2:00 p.m. to 4:00 p.m., Sunday: 11:00 a.m. to 4:00 p.m.

Info Point Hellenthal

Provides first impressions of the National Park Eifel with the surrounding nature. An illuminated relief shows visitors what is waiting for them in the Eifel National Park.



Information Point Hellenthal

Tourist-Information · Rathausstraße 2

53940 Hellenthal · Tel. +49 (0) 2482/85 115

tourismus@hellenthal.de · www.hellenthal.de

Info Point Dormio

With a beautiful view over Hasenfeld and the Heimbach water reservoir the National Park Info-Point is accommodated in the Landal Resort Eifeler Tor. There you will receive all information material about the National Park and the Rureifel. Consultations in several languages are also possible.



Dormio-Resort Eifeler Tor

Schwammenauel 6 · 52396 Heimbach

Tel. +49 (0) 2446/809 49 39

resort@rureifel-tourismus.de

Opening times:

April-October: daily,

November-March: every day except Thursday

Starry region of Eifel

A close-up and fascinating experience with nature at the observatory of the „Stars Without Borders“ astronomy workshop



The **night sky** in the starry region of Eifel, with its Star Park in the Eifel National Park, offers a unique, and these days, rare experience in nature.

Take a close-up look into the vast expanses of the universe. You're sure to be fascinated by the night sky filled with stars.

This natural heritage of „**Starry Sky**“ can only be experienced in a few places in Europe. Because there is so much artificial light pollution at night most people not only miss out on a healthy night's sleep but also on a clear view of the stars in the **night sky**.

In 2014, the International Dark Sky Association (IDA) named the Eifel National Park the International Dark Sky Park - a precious quality certificate for a star-studded **night sky**.

At the observatory of the „**Stars Without Borders**“ astronomy workshop, you can glean exciting sky observations with telescopes and large binoculars both at night and day. You can see the rings around the planets, clusters of stars, distant galaxies and lunar craters, sun-spots and dark patches on the sun.

If nothing else, many visitors see the Milky Way's glimmering band stretched across the sky for the first time – our cosmic home with 200 billion stars.



© Medienzentrum Kreis Euskirchen

Guided stargazing conveys the value of natural night in a poignant way and creates an understanding of the cosmic orders of magnitude. Experiments with artificial light explain the urgent need to reduce light pollution in order to prevent damage to human health, the threat to biodiversity and the brightening of the night sky. It makes the importance of natural darkness at night tangible. and real.

Over a hundred public „Star Tours“ for all ages can be booked online. The explanations in German can be supplemented in English on request.

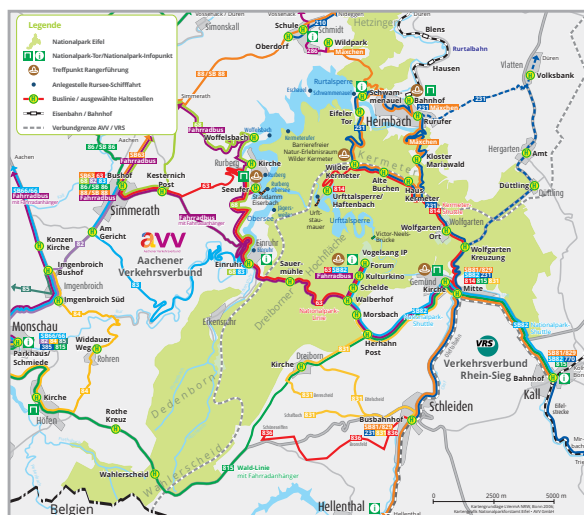
For dates, online bookings and information about the observatory of the „Stars Without Borders“

Internationalen Platz Vogelsang IP, visit:
www.sterne-ohne-grenzen.de
info@sterne-ohne-grenzen.de
 Tel: +49 (0)221/44900586



Experience nature

... with bus & train on the road in the Eifel National Park!



The train Rurtalbahn takes you from Düren (connection to trains from Aachen and Cologne) to Heimbach. Coming from Cologne, Bonn and Trier, you can reach Kall station by train (note current information). From Aachen, buses go directly to Simmerath (SB 63) and Monschau (SB 66). From Kall, Heimbach and Simmerath there are several bus routes that take you directly to the National Park.

The Forum Vogelsang can be reached daily at hourly intervals with the National Park Shuttle (SB 82) from Kall station via Gemünd and with the National Park Line (63) from Simmerath via Einruhr.

The Kermeter can be reached from Heimbach and Gemünd by the Kermeter-Line (232). On weekends, from Easter to the 1st of November, the "Mäxchen" additionally heads for numerous excursion destinations in the Kermeter area from Heimbach and the Kermeter Shuttle (814) from Gemünd.

You can obtain a **folding map with all public transport lines**, information about the buses and trains you can use for your excursion, timetables and tickets, as well as numerous tips for hiking and cycling tours with directions, from the local transport companies, at the National Park gates or on the websites of the associations.

TIMETABLE AND FARE INFORMATION

You can find timetable and fare information on the websites of the Aachener Verkehrsverbund (AVV) or the Rhine-Sieg Transport Association (VRS) and by telephone: 0 180 6 50 40 30 (20 cents/call from a German landline; mobile calls max. 60 cents/call)



On a Journey of Discovery

With the Rurtalbus GmbH through the Eifel National



A real treat for all nature lovers - during the summer season, the Mäxchen of the Rurtalbus GmbH drives to worthwhile excursion destinations on all Saturdays, Sundays and public holidays, thus providing exciting insights into the Eifel National Park.

The Mäxchen tour starts and ends at Heimbach station. After a hearty helping of delicious pea soup at the Mariawald monastery, it follows its usual route to the Kermeter hiking trails where you can go for a relaxing walk with fantastic views. But it also takes you to boat tours on the Rursee or a visit to the Schmidt Wildlife Park – adventures for the whole family.

The Scout Tour starting at Heimbach station on Sundays at 12.15 pm is the favourite of the season. Passengers learn interesting things about the nature and culture around Heimbach and the Eifel National Park.

Contact: iPUNKT Düren

Markt 6 · 52349 Düren
Tel. +49 (0) 2421 / 2000

For travel times and prices visit:
www.rurtalbus.de

Travelling in comfort

With the Rurtalbahn into the Rureifel and the National Park Gate of Heimbach



Travelling in comfort. The train Rurtalbahn takes you safely and comfortably to the Eifel in 45 minutes. During the journey from Düren to Heimbach along the river Rur, the comfortable vehicles offer a wonderful view of the Rur valley. Once you reach Heimbach, there are many leisure activities on offer for all ages to enjoy. A visit around the medieval city centre, the Art Nouveau hydroelectric power plant, a boat tour on the Rursee or a guided tour with a Ranger are just a few examples. The corresponding bus services are coordinated to fit in with the connection times of the Rurtalbahn. For your excursions please use the favourable day or 24-hour-tickets. **Tickets** in the area of the Aachenener Verkehrsverbund "euregioticket" (day ticket: Mon. – Fri. for 1 person; Sat., Sun. or Fri. for max 2 adults and 3 children under 12 years) as well as the 24-hour tickets for 1 or 5 persons in the entire district of Düren.

Contact: Rurtalbahn GmbH

Tel. +49 (0) 2421/2769301 or visit www.rurtalbahn.de

Passenger information:

In the train Rurtalbahn bicycles can be taken along all day, which is ideal for exploring the beautiful RurUfer Cycle Path, for example. There are 5 bicycle parking spaces in each vehicle. A bicycle ticket can be purchased for each bicycle regardless of distance. Bicycle tickets are available at the ticket machines at the stops. Groups wishing to take their bicycles with them must register at least three days in advance.



Castle town Blankenheim

Nature, culture and history at the source of the Ahr river



The historic centre of Blankenheim is characterised by numerous half-timbered buildings. In the cellar of one such house is the source of the **Ahr**. The **Eifel Museum** and the **Gildehaus** are also housed in historic buildings. Here, in addition to an exhibition on the history of the earth, visitors can also visit the Roman Road Information Centre, an exhibition on the count's rule and the history of Blankenheim as well as an art exhibition by the painter Fritz von Wille. A visit to the **Roman Villa** is also worthwhile. The former „**Villa Rustica**“ is one of the most important monuments of the Rhineland. Modern reconstruction reveals the considerable extent of the former estate. And the counts have also left their mark: not far from the **castle** is the **Tiergartentunnel**, a former water conduit. It was built in an elaborate construction through the hill of the Tiergarten, in order to supply the lords of the castle with fresh water from the spring about two kilometres away.

Another unique feature is the intersection of the AhrSteig and Eifelsteig **Premium hiking trails**. The network of hiking trails around Blankenheim promises plenty of variety on two EifelSpuren (Eifel Tracks) and 12 EifelSchleifen (Eifel Loops). The **Ahr Cycle Path** between Blankenheim and Ahrdorf is also fully passable again after the flood disaster.

Numerous **events** in Blankenheim also shape the cultural life. At the event „Heimathäppchen“ the historic

town centre is transformed into an enjoyment mile of regional suppliers. The „Tour de Ahrtal“ provides cycling fun and the summer is characterized by the open-air events „Summer at the Lake“ with live music and the „Summer Cinema“ in the historic village centre.

Thanks to the **“Leuchter”** (eavesdropping tour), which is possible via the free download of the „eavesdropping tour app“, visitors have the opportunity to get to know the sights and history of Blankenheim. While they walk through the town and up to the castle, the smartphone outputs information in audio format via the app and thus acts as a digital town guide. With the **nature discovery trail**, which has a length of 4 km, children not only get a feeling for nature and the forest, but also discover the diverse flora and fauna of the Eifel in a playful way.

Lake Freilingen is also ideal for a (family) excursion. The lake is embedded in the beautiful landscape of the Eifel and offers activities on and around the water, such as diving, swimming, rowing, fishing or a hike.



Contact: Touristinformation Blankenheim

Ahrstr. 55-57
53945 Blankenheim
Tel. +49(0)2449 87 -222
touristinfo@blankenheim.de
www.blankenheim.de



High Spirits

Jobelius Spirits in Valwig, Mosel - since 1952,
traditional, modern and innovative



The Jobelius family business produces and distributes high-quality spirits. They are based in the picturesque vineyards of Valwig an der Mosel. Now in its third generation with the grandson of the company's founder, Daniel Jobelius, at the helm, the company has been continuously expanding over the past decade, helping to grow their customer base.

This consists of wholesalers, retailers, catering companies and end customers nationwide.

Over the years, the original range of traditional private labels has developed into a much wider selection. The top regional products, such as „Moselfeuer“, „Eifelfeuer“, „Obstbrände“ and „Weinbergpfirsichlikör“, combine the finest, natural ingredients, such as herbs and fruit juices, to create a distinctive treat.

The spirits can be purchased directly on site or in the online shop at www.jobelius.de.

In addition to the traditional distribution of spirits, the company also offers filling services and two in-house distilleries. The Jobelius team knows how to make the perfect spirit, create new tastes and then combine these. Thanks to their in-depth expertise in the development of new products, they are able to cater to individual customer requests. Jobelius also offers guided tours and open house tasting events. After a short video about the production of the



Moselfeuer in the newly built Moselfeuer factory, visitors will learn a lot about this fascinating trade.

And at a tasting centred on four different spirits specialties, they will experience the variety of the world of flavours.

The open house tastings are held from March to October, from Monday to Friday at 4 pm and on Saturdays at 2 pm.

From November to February, the tastings are also held during the week at 4 pm, and on Saturdays at 11 am. You can also book a tasting session for up to 50 people.

CONTACT:

Jobelius Spirituosen

Moselweinstraße 1
56812 Valwig/Mosel
Tel. +49 (0) 2671/9773-0
Fax +49 (0) 2671/9773-90
info@jobelius.de
www.jobelius.de

Moselfeuer Manufaktur Cochem

Brückenstraße 1
56812 Cochem
Opening hours:
daily from 10 a.m. – 6 p.m.

NEW

Nature and history

Feel it up close in the Eifel municipality of Nettersheim



Eifel Nature Centre

Whether on your own, on a guided walk or in a guided programme: you can experience a lot with us! It doesn't matter whether you come to the beautiful Eifel village of Nettersheim for just a few hours, a day or for a holiday lasting several days. It's worth it.

Understanding the forest and nature, discovering new things, sharpening your eye for the small but important things in life: we offer fun for the whole family. Unfortunately, the ground floor of the Eifel Nature Centre was largely destroyed in the flood of July 2021 and is now being repaired. At the moment, it is not available with its coral reef aquarium and its varied exhibition landscape.

Our team has been accommodated in the „House of Fossils“, two minutes' walk from the Eifel Nature Centre, at Bahnhofstraße 50. Here you can get tips for short and long hikes and sightseeing at the tourist information and find a small selection of our museum shop. You can also view extensive fossil collections here free of charge.



On the dandelion adventure trail, Olly, the hedgehog, will accompany you to the 20 adventure stations. From March to November, great programmes for young and old take place at the Eifel Nature Centre on weekends and during the holidays.



Archaeological Landscape Park

Nettersheim lies directly on the Agrippa Road from Cologne to Trier. In ancient times, a Roman settlement was located here in an impressive landscape. After extensive excavations, the results were made visible at eight experience stations in partial reconstructions on the approx. 4 km long circular trail. You will find a matronly sanctuary, the small fort on the Urft, „Streifenhäuser“ (Gallo-Roman houses lined up in rows) and much more.

The Roman Road Information Centre at the starting point, the Eifel Nature Centre, and the archaeological exhibition on the upper floor are currently not available. We hope that we will be able to repair the flood damage as soon as possible and reopen these facilities.

Discover the treasures of the past on research days for families, in activity programmes for school classes and groups and in the Archaeological Landscape Park or in culinary offers. A special highlight is the annual Roman camp at Steinrutsch with activities for young and old..

Contact: Team Naturzentrum Eifel

Currently: Tourist Info in the „House of Fossils“
Bahnhofstraße 50, 53947 Nettersheim
Tel.: +49 (0)2486/1246

naturzentrum@nettersheim.de

www.naturzentrum-eifel.de

Opening hours:

March to November: Mon-Sun 10 a.m.-4 p.m.,
December to February: Mon-Fri 11 a.m.-2.30 p.m., Sat & Sun 10 a.m.-4 p.m.

Art in connection with nature

Sculptures by international artists in Gerolstein



Idyllically situated in the middle of nature in Niedereich is the Gerolstein Sculpture Garden. There, visitors can enjoy peace and quiet from everyday life and marvel at the works of international artists. Everywhere, benches invite you to take a break and let the art take effect on you. The sculptures are embedded in flowerbeds, stand next to paths or by the pond. All of them fit into their surroundings. During a tour, you will be accompanied by the beguiling scent of different types of roses. More than 20 creators from Germany, the Netherlands, Belgium, France and Switzerland inspire with sculptures made of bronze, clay, marble, wood, steel, glass and polyester. All the works on display are available for purchase. There is also a gallery where many smaller works and jewellery can be found.

The Sculpture Garden Gerolstein is open on Wednesdays, Thursdays, Fridays, Saturdays and Sundays from 11 a.m. to 5 p.m. in June, July, August and September. Outside these opening hours, the garden can be visited by appointment.

Contact:

Skulpturengarten Gerolstein

Dorfstraße 7a

54568 Gerolstein (Ortsteil Niedereich)

Tel. +49 (0)6591/983055

Mobil +49 (0)173-9833241

www.skulpturengartengerolstein.com

Health Resort Kronenburg

Pure romance in the picturesque castle town of Kronenburg



The excursion destinations and offers in the village of Kronenburg in the municipality of Dahlem are very diverse. The historic **castle town** with its picturesque alleys and restored houses towers above the famous Kronenburg Lake. From the highest point on the **castle ruins**, you have a wide view of the Kyll valley. In the **Hasenberg-Hof of the Dr. Axe Foundation**, the focus is on culture. In the valley on the Kyll lies the small **Brigida Chapel** with the old stone bridge.

Lake Kronenburg offers numerous opportunities for water sports. In addition, the 130 km **Kyll cycle path** runs along the lake. The network of hiking trails around Kronenburg is made up of the new EifelSchleifen (EifelLoops) and EifelSpuren (EifelTracks).

The Kronenburg Art and Culture Days take place every year on the second weekend in September. On the first weekend in Advent, **one of the most beautiful Christmas markets** in the Eifel traditionally takes place in the decorated historic town centre. Both events are absolute highlights of the year in the village.

Tourist Information:

Eifelpark Kronenburger See

Zum Kleebusch 15

53949 Kronenburg

www.eifelpark-eks.de

www.dahlem.de

www.kronenburger-see.de



Bad Münstereifel

Where history comes to life and breathing becomes an experience



Ein historical town centre, draped in the green hills of the Eifel, a densely wooded urban area with more than 50 active villages, a wide range of shopping opportunities and lots of culture in the midst of nature.

This is Bad Münstereifel, the only town with the Eifel in its name. In the listed old town you will find picturesque half-timbered houses, a romantic townscape with modern shops, historical buildings and many cultural offers. History can be experienced in the small, lovingly furnished museums or let it be told to you in a guided city tour. Special cultural highlights are the Wallgraben concerts and the Kulturhaus theater¹. After a cultural or shopping experience, cafés and restaurants invite you to relax and linger. Those who like sports are drawn to the Bad Münstereifel forest. Whether you are a hiker or a mountain biker - the forest invites you to take exercise in the fresh air. Way of St. James pilgrims welcome!

The paths from Cologne and Bonn to Trier meet in Bad Münstereifel. The Eifelbad with its 122-metre slide and year-round heated outdoor pool is known as particularly family-friendly. Once you have discovered Bad Münstereifel for yourself, you will gladly come back to experience new facets of the young Kneipp spa with the old town wall.

Bad Münstereifel is worth a visit at any time of the year.



On the night of July 14th to 15th, 2021, Bad Münstereifel was hit by a devastating tidal wave.

The tourist infrastructure and shops in the historic old town were destroyed. Reconstruction is now progressing. In mid-2022, the city wants to be back as a tourist center and shopping location. Premium hiking trails and the eifelbad can already be experienced again.

Among the museums, the Rupperath hand weaving museum and the Roman lime distillery in Iversheim were not affected by the flood. The Roman lime distillery was added to the UNESCO World Heritage List in October 2021 together with the "Nassen Limes".

On October 2, 2022, it will be the Bad Münstereifel station on the Archeology Tour North Eifel.

Please stay connected to Bad Münstereifel. After the restoration of the cityscape, the city will be ready for you again as a holiday destination, adventure space and shopping city.

Contact: Stadt Bad Münstereifel

Marktstraße 11-15

Tel.: +49 (0)2253/505-0

touristinfo@bad-muenstereifel.de

www.bad-muenstereifel.de



Himmeroder Hof in Rheinbach

Glass Museum, Nature Park Centre and
Römerkanal Information Centre



Rheinbach Glass Museum, Open Museum Workshop, Workshops, Museum Shop

What kind of glass was produced by which craftsmen for which customers in Bohemia over the last 400 years? What does Count Kinsky have to do with Bohemian glass? Who were the home carriers and why were they absolutely necessary for the smooth running of production? How did Rheinbach become a glass city after the Second World War? Can glass be made into modern sculptures?

The permanent exhibition of the Glass Museum provides surprising answers to these and many other questions. And if you're looking for an unusual gift to round off your visit, you're sure to find what you're looking for in the chic museum shop with Rheinbach glass. There, crime fans can buy the case file for the Rheinbach crime trail „Scherben bringen Unglück“ (broken glass brings misfortune) and start directly on the puzzle adventure across the city.

www.krimi-trails.de

Contact:

Glasmuseum Rheinbach

Tel. +49 (0)2226/917501

glasmuseum@stadt-rheinbach.de

www.glasmuseum-rheinbach.de



The Römerkanal Information Centre is in the middle of Rheinbach, at Himmeroder Hof, along with the Glass Museum and the Nature Park Centre Rheinland. It is also conveniently located at the centre of the Römerkanal hiking trail. It contains everything you need to know about the Roman Canal and the hydraulic engineering systems built by the Romans. An exciting exhibition with guided tours and educational program explains the techniques the Romans used.

In addition to this, there is also information about the Roman Canal hiking trail and the highlights in the areas it runs through. The Römerkanal Information Centre regularly hosts events. All the dates for future events are listed at www.roemerkanal.de. The information centre is wheelchair-friendly and admission is free. The entrance to the building is in the Himmeroder Hof Nature Park Centre.

Contact:

Römerkanal Infozentrum

Tel. +49 (0)2226/917554

roemerkanal@stadt-rheinbach.de

www.roemerkanal.de

City of Rheinbach - Culture, Museum and Tourism

Himmeroder Wall 6 · 53359 Rheinbach

Opening times: Tue-Fri 10am-12pm, 2pm-5 pm · Sat / Sun 11am-5pm



Machines and Must Haves

LVR Industrial Museum in Euskirchen-Kuchenheim



Photo: Miriam Schmalen



Photo: Jürgen Hoffmann

The LVR Industrial Museum presents **a complete cloth factory** from around 1900 in its permanent exhibition - and even has the old machinery running again. After its closure in 1961, the factory fell into a long dormant sleep. The factory ensemble has been preserved completely and authentically down to the last detail, and today conveys a true-to-life experience of the working world of 50 or 100 years ago. You get the feeling that the workers could return from the weekend at any moment.

A special attraction is the demonstration workshop: during every guided tour of the most important spinning and weaving machines are shown in full action. Once a month you can also admire the steam engine in operation.

Special exhibition Must Haves. History, Present, Future of Consumption (until 27.11.2022)

Must Haves - (seemingly) indispensable desired objects are known by all of us. But what is important and when? Who still has their heart set to a candy cane or a stock cube? When it comes to trendy sneakers or the latest smartphone, on the other hand, we have clear preferences.

On the basis of 450 exhibits, we begin with a look at life in pre-industrial times. We look at branded goods and department stores at around 1900 as well as consumption in times of

shortage and the economic miracle. In times of climate change, consumption is viewed more critical. Finally, the exhibition presents future trends and ideas for an environmentally friendly approach to the things in our lives.

Contact: LVR Industrial Museum

Tuchfabrik Müller Carl-Koenen-Str. 25b
53881 Euskirchen-Kuchenheim
Tue-Fri, 10am-5pm, Sat-Sun 11am-6pm.
The cloth factory can only be visited with a guided tour.

Guided tours of the cloth factory:

Tue-Sat 11am/1/3 pm.,
Sun 11am/12/1/2/3/4 pm.

Steam engine in operation:

Every 2nd Sunday of the month
1:30pm-4:30 pm.

Info and bookings:

kulturinfo rheinland 02234 9921555
or info@kulturinfo-rheinland.de

The special tip

Behind the museum a large playground - with extraordinary playground equipment for children and teenagers, which invites families to linger. On Sunday afternoons, the cafeteria not only serves coffee, but also delicious waffles and savoury snacks.



LVR-Open Air Museum Kommern

Rhineland State Museum
of Folklore



© Tourismus NRW e.V.

Out to the museum! The LVR open-air museum Kommern in the Eifel region takes you back 500 years into the past. The scent of freshly baked bread wafts through your nose. Geese and chickens run excitedly across the cobblestone pavement. From the forge you can hear the loud hammering of the hammer on the anvil.

All year round, visitors* can experience how people in the Rhineland once lived and worked. Historic houses and stables in the Rhineland were dismantled and rebuilt on the 100-hectare museum grounds. Simple smoking houses, as they were still typical of the Westerwald in the 16th century as well as half-timbered buildings from the northern Eifel. But also farms and stables where people from the Lower Rhine and Bergisches Land lived with pigs, horses and chickens under one roof. The Rhineland marketplace brings the 1950s to the 1990s back to life.

Contact: LVR-Freilichtmuseum Kommern

Rheinisches Landesmuseum für Volkskunde
Phone +49 (0) 2443/99 80 0
Eickser Straße, 53894 Mechernich
kommern@lvr.de; www.kommern.lvr.de

Opening hours:

Open 365 days a year! every 2nd Fr. of the month
free entry for all 1st of April – 31st of Oct. from
9.00 a.m. - 7.00 p.m. 1st of Nov to 31st of March
from 10.00 a.m. - 5.00 p.m. Admission until 1
hour before closing: Children under 18 are free;
Adults 8,50 €, reduced 6,50 €

Roman Spa Zülpich – Museum of Bathing Culture

Experience the cultural history of the
Bathing in a unique exhibition



© Dominik Schmitz / LVR-ZMB

Europe-wide one of a kind!

The Zülpich Museum invites you on a journey through 2000 years of bathing culture, from the Romans to today. The core-piece of the museum is the original Roman thermal baths from the 2nd century. They are the best preserved facility of its kind north of the Alps.

On discovery tour with Jonah and Julia

Children can discover the history of bathing accompanied by the comic figures Jonah and Julia taking part in a theme-related rally. The whole family can enjoy interactive stations appealing to all senses: the smell of antique perfume and herbs popular with the Romans can be sampled at the fragrant wall, Roman parlour games e.g. Round Counter Nine Men's Morris can be tried at the gambling table.

Films and audio-guide stations provide a multimedia introduction into the subject. This turns the visit of the museum into a varied and exciting discovery tour.

Contact: Roman Spa Zülpich – Museum of Bathing Culture

Andreas-Broicher-Platz 1, 53909 Zülpich
info@roemerthermen-zuelpich.de
Phone +49 (0)2252/83806 0
www.roemerthermen-zuelpich.de
Entrance free children under 18!

Opening hours:

Tue.-Fri. 10:00 a.m. – 5:00 p.m. Sat., Sun.
and holidays 11:00 a.m. – 6:00 p.m.



Seepark Zülpich

* Family Holiday * Fun in the Water * Relaxing *



4,000 sq m sandy beach with pirate climbing ship, giant bounce pillow, gigantic swings, water playground, falconry, adventure golf, beach volley ball, pedal boats and much more awaits you in the Seepark Zülpich. Feel as if you were on holiday and experience a wonderful family day on our 20 hectare site with its generous playing and activity areas. The Seepark Zülpich is barrier-free and suitable for taking prams and handcars.

Events for the whole family!

Joyous, colourful events for generations don't leave time for boredom: Experience more than 30 bouncy attractions in a jumping area of more than 9,000 sq m at big bouncy castle festival "Jump im Park", encourage brave captains on their self-built boats with "Smurfit Kappa Paper Boat-Cup", let you be enchanted by the "illuminated gardens" and see the huge fire-spitting dragon Fangdorn at the "Dragon Festival"

Children's birthdays:

small guests so big! Indians, witch's birthday, pirate party or golf fun. Celebrate an unforgettable children's birthday in the Seepark-Zülpich! For your birthday child and her/his guests we have prepared exciting programmes for a terrific great day.

Realize garden dreams:

The supra-regionally only model garden exhibi-



Photos: © Seepark Zülpich

tion on a high-quality level is found in the "Rheinische Zentrum für Gartenkultur". Get inspirations for your personal design of balcony, terrace and garden or enjoy the seasonal change of bloom in all its splendour in our gardens.

Opening hours:

We are open daily from 01ST of March to 31st of October.

www.seepark-zuelpich.de/oeffnungszeiten

Entrance prices:

The current admission prices can be found at www.seepark-zuelpich.de/eintrittspreise

Contact:

Am Wassersportsee 7
53909 Zülpich



Free parking place as well as fee-required camper site harbour are directly on site.

More detailed information under Phone +49 (0)2252 / 52345 and under www.seepark-zuelpich.de und www.facebook.com/seeparkzuelpich



GEMÜND Spa Gardens

Leisure facility with recreational and cultural character for young and old

under re-construction



The spa garden facilities in the Kneipp spa town of Gemünd offer a wide range of leisure and exercise opportunities. They are the starting point for various circular walks within the National Park. Visitors have the opportunity to stretch their legs and find peace and relaxation during a short, carefree walk. Numerous seating areas invite you to rest and linger.

From the beginning of May to the end of September, the popular spa concerts take place in the music pavilion. Then every Sunday from 4:00 p.m. to 5:30 p.m. varied entertainment music can be enjoyed under the open sky.

For **families with children**, a children's programme is performed every Sunday at 2 p.m. from the beginning of June to the end of August as part of the Gemünd children's culture series. Here too, a colourful program is always put together.

The concerts and the children's program are free of charge. In case of bad weather, we will move to the neighbouring spa building (Kurhaus), if possible. The new park kiosk will provide you with drinks, ice cream and snacks. In the centrally located fitness garden there are 6 outdoor fitness machines, which invite you to do something for your health: Leg, full-body, back, flexibility and shoulder trainers as well as back massage machine.



These a back massage device. These devices, especially designed for the public sector, serve to strengthen circulation, mobility and coordination in an amazing and playful way. They inspire people of all ages and serve not only movement and physical fitness, but also communication.

Of course, the spa park of the Kneipp health resort Gemünd also provides various Kneipp pools for its guests: Two water treading places are equipped with an arm bathing facility and a Kneipp facility is flanked by a small barefoot path.

Leave stress and hectic behind you in the Gemünd spa park and enjoy a relaxing stay in the green.

You can end the day in a cosy and culinary atmosphere in the adjacent Kurpark Restaurant.

Re-opening is planned for summer 2022

Contact:

National Park Info Point Gemünd

Dreiborner Str. 59
53937 Schleiden-Gemünd
Tel. +49 (0)2444. 2011
www.nordeifel-tourismus.de



The Arts Forum Eifel in Gemünd

Always up to date and interesting!



© www.manosreisen.de

The KunstForumEifel with its three modern and light-flooded floors provides room for regularly alternating exhibitions and it is an ideal place for readings, concerts and other cultural events.

The wide spectrum on show ranges from a conventional painting exhibition to experimental performance projects, with paintings, drawings and prints, sculptures, photography and space-related installations, as well as sound and video art. The artists on show come from the Eifel region as well as the nearby Euregio.

The diversity and variety of the exhibitions ensure that visitors always have something new to look at. The exhibitions currently showing can be found on the website of the Art Forum Eifel. We hope we have stirred your interest to come and visit us so we can continue to keep the fine arts very much alive in our region and continue to provide support to local artists. We look forward to giving you a very warm welcome! We are looking forward to your visit.

Contact: KunstForumEifel

53937 Schleiden-Gemünd
Dreiborner Str. 22 / Alte Schule
Phone +49 (0) 2444/91 45 51
www.kunstforumeifel-gemuend.de

Opening times:

Fridays to Sundays 1:00 p.m. to 6:00 p.m.

Guided tours are available on request

Restrictions may occur due to the floods in 2021.

Reopening planned for summer 2022

Gallery against the „right“

„Eifel Kunst“ in Gemünd for freedom and democracy



„No!“ to right-wing extremism, racism and violence: The gallery „Eifel Kunst“ is a gallery against „right-wing“ and regularly presents theme-related exhibitions, lectures, readings, concerts and film screenings. Furthermore, the Eifel Art Gallery offers projects against war, for peace, for integration, human rights and human dignity as well as for intercultural and interreligious dialogue.

„Eifel Kunst“ offers areas in which people can display their diversity and thereby gives culture-oriented artists the opportunity to have a voice and to speak up against exclusion, against racism and against violence. The „Eifel Kunst“ gallery is filled with artistic statements about democracy and freedom, which transform it into a place of diversity and encounters.

The works of art are like obstacles on the path to oblivion.

Contact: Galerie „Eifel Kunst“



Schleidener Straße 1
53937 Schleiden –
Gemünd
Phone +49(0)1573
6941876
www.eifel-kunst.de

Opening times:

Fridays and Sundays from 2:00 p.m. to 6:00 p.m. and by appointment



Schleiden Mile of Art

Discover statues and artworks of six contemporary artists.



The Schleiden Art Mile is located in the heart of the National Park capital. Since 2013, it has attracted visitors interested in art and culture. They are free to wander along a beautiful circular path along the Olef and through the historic parts of the city centre. Statues and works of art by six contemporary artists are on display here, nestled in the unique landscape of the Eifel.

The Klosterplatz (with parking facilities) marks the start and end of the walk through the contemporary art exhibition. Once you have reached the square, follow the signs (No 29 Art Mile) along a circular path running 1,200 metres in total.

Most of the objects you encounter on your way come from the workshops of sculptors Christine Santema from Cologne and Thomas Kleevisch from Gemünd. Marti Faber from Zülpich is also exhibiting her work. The metal piece in the outer bailey is made by Joachim Röderer, who lives in Magdeburg.

The mosaic, which can be admired on the Olef-mauer on the promenade at Driesch, is a joint project made by refugees and dedicated residents under the direction of Diana Scholl. It was created as part of the campaign „You are welcome“ of the DRK Kreis Euskirchen.

Directions & Parking

About a 10-minute walk from Schleiden Bus Station (line 829 Kall-Schpassion-Hellenthal). Free parking at Driesch.

The treasures of the Schleiden Castle Church

The famous König organ and the colorful church windows



The Schlosskirche was consecrated in 1230 as castle chapel and replaced by a gothic church around 1340, with its choir still existing. The three-nave, late gothic and still existing hall was erected under Dietrich IV. of Manderscheid-Schleiden from 1516 to 1525. Today, the Schlosskirche is a catholic parish church.

The well-known König organ is a piece of work of the Cologne organ builder Ludwig König from the year 1770. This masterpiece is original to a wide extent and the prospect is designed in the style of Liège baroque. The structuring of the organ prospect into upper and lower register with the pedal panel shows well the setup of the 30 sounding voices with 1702 pipes on three registers.

The colourful renaissance windows from 1535 at the front wall of the side naves show two scenes of the life of Jesus on the top: at the left from the childhood the adoration of the Three Kings, at the right from the tale of woe the mourning of the crucified. In the middle in front of the saints the benefactors are on their knees at kneelers: left side Dietrich IV. and his first wife Margareta v. Sombreff, right side Wilhelm v. Manderscheid-Kail, abbot of Prüm, Stablo and Malmedy.

Contact: Katholisches Pfarramt

St. Philippus und Jakobus Schleiden

Vorburg 3 · D-53937 Schleiden

Phone: +49 (0) 24 45/32 18

Our tip: The church is open daily, summer from 9-18, winter from 9 -17 p.m.



The hiking region around Schmidt

A paradise for those looking for relaxation and nature enthusiasts



This history-charged place is located right on the edge of the National Park Eifel. No matter if the sun shines or it rains, for holidays in Schmidt the weather is not decisive. For all activities, no matter whether day trip or holidays, whether by car, motorbike bicycle or on foot, Schmidt is the ideal starting point for hiking tours through the National Park Eifel on approx. 300 km hiking trails across numerous hills and valleys; besides the "Schmidt Hiking Week" plenty of variety is offered.

These hikes offer an ideal start to get familiar with our surroundings. However, an excellent hiking network provides the opportunity to simply start hiking on your own. The charming Eifel village of Schmidt is an attractive destination at any season of the year. Apart from the hustle and bustle and far away from noisy traffic it is a wonderful place to relax. The fresh and clean Eifel air will clear the mind and also the restaurants in Schmidt leave nothing to be desired. Friendly hosts in restaurants, inns and cafés pamper their guests and hotels, bed and breakfast places or holiday flats meet any demand for a longer stay.

Contact: Verkehrsverein Schmidt

Monschauer Str. 55
D-52385 Nideggen-Schmidt
Phone +49 (0) 2474/311
Fax: +49 (0) 2474/6167
info@vvschmidt.de · www.vvschmidt.de

Castle romance & Witchcraft

Lively history and picturesque ambience for romantics



© Eifel Tourismus, Dominik Ketz

The castle "Wildenburg" is the only castle built on a hill which was not destroyed and can still be admired in the district of Euskirchen. It dates back to the 12th century and has everything that belonged to the knights' order of the noble family von Wildenberg: an outer bailey with corner tower and a small bourgeois settlement protected by the massive walls of the castle. Today the castle is used as social meeting place as well as recreation and educational facility. After centuries of an eventful and often dangerous history, today there is no sense of dark mystery left around the village Reifferscheid with its castle. Quite the opposite is the case: a pure touch of romance with its half-timbered houses, which since the Early Gothic Period have tightly been nestled against each other. The castle was first mentioned in 1106 on a sad occasion: The Lord of the castle, Heinrich Graf von Limburg, had his own homestead burned down in the battle against the emperor. Today the village and the castle ruin can be explored at a "leisurely historic round tour".

Tourist-Information and National Park Information Point Hellenthal

Rathausstraße 2 · 53940 Hellenthal
Phone +49 (0) 2482/85 115
Fax +49 (0) 2482/85 114
tourismus@hellenthal.de
www.hellenthal.de

Our tip: information on Wildenburg and Burgdorf Reifferscheid visit us at www.hellenthal.de



The ducal town of Nideggen

Living history



© Eric-Jan Ouwerkerk

The former ducal city of Nideggen lies on the northern edge of the Eifel - high over the coloured sandstone rock that can be seen from far and wide. From the 12th century, Nideggen, with its castle, was the residence of the counts of Jülich. Today, Nideggen offers visitors an interesting piece of history as well as being a modern place to live.

Its appeal is characterised by the lovingly maintained, historic city centre and the castle of Nideggen. Two well-preserved city gates and the city wall made of sandstone dominate the city's silhouette and make the visitors feel like they are walking through the past. One of the wild and romantic streets goes from the marketplace directly to the mighty castle with its keep, which is home to the Rhineland Castle Museum. If you feel up to it, the climb to the top of the castle is well worth the effort for the stunning views of the Rur Valley.

The city can look back on a chequered past spanning over 700-years and it still impresses visitors with its medieval style. Historical tours to different areas or interest take you on interesting tours of discovery through several centuries of history. Contact details and information are available at the National Park Gate of Nideggen, Im Effels 10, 52385 Nideggen, 02427/3301150, or by emailing nideggen@rureifel-tourismus.de. In a beautiful setting near to the National Park Gate is the most modern Eifel



© Käthe und Bernd Limburg

Youth Hostel in the DJH Landesverband Rheinland. In addition to its modern hostel facilities and accommodation, it also offers plenty of space for meetings and seminars. There is a „view of the Eifel“ on the roof of the hostel. A fantastic view of the vast landscape of the Eifel opens up from here for visitors to enjoy. The observation deck can be easily reached at any time via the external staircase of the youth hostel.

The region offers a wealth of opportunities for exploring nature: 300 km of footpaths and an extensive network of cycle tracks run from Nideggen through the wooded Rureifel. If you want to relax, you can go to the magnificent natural Eschael beach by the Rursee in Schmidt. The nature reserve „Buntsandsteinfelsen im Rurtal“ around Nideggen is an impressive and popular climbing area; it offers climbers a challenging terrain for individual climbing fun. Welcome to the ducal city.

Information Nideggen City

Administration Office

Zülpicher Str. 1 · 52385 Nideggen

Phone 02427/809-0

www.nideggen.de

Tourism Office

Rureifel Tourismus e.V.

Phone +49 (0) 2446/805-7911

Fax: +49 (0) 2446/805-7930

www.rureifel-tourismus.de



Paper Town Düren

Lively city history with varied shopping facilities
and cultural offers



The city on the Rur is situated on the edge of the Eifel in beautiful nature and yet centrally located between Aachen and Cologne. Therefore, it is a destination of varied character.

Nature lovers can explore the RurUfer cycle path or the Dürener Seenrunde by bike and end the day at one of the beautiful bathing lakes in Gürzenich and Echtz. The moated castle route then leads to Burgau Castle, whose origins go back to the early Middle Ages. However, the current building stock of the romantic complex, which was built on an island, essentially dates from the 14th to 18th century. Today Burgau Castle is a venue for a wide range of cultural events with euregional focus and regularly offers free exhibitions. There is also a castle café in the outer bailey, where visitors can relax after a long walk through the surrounding Burgau forest.

The cultural offer of the city is also waiting to be discovered. A theatre performance in the Haus der Stadt is also worth seeing, as is the City Museum, which presents the history of Düren in an appealing way, and the Leopold-Hoesch-Museum, which has an impressive collection of works of expressionism and classical modernism. A visit to the Paper Museum is also particularly worthwhile. It offers a glimpse into the history and diversity of the material paper, the production and processing of which has a



© Dennis Stratmann | Grünmetropole e.V.

centuries-old tradition in Düren. The importance of paper for Düren is also evident in the guided tours of the town, which take place throughout the year for young and old. Each guided tour focuses on a different theme, making the history, culture and attitude to life of Düren vivid and lively. For example, accompany the original „Schutzmann Wölk“ from Düren on its foray through the town centre and get to know the Rhineland's mentality.

One of the most important sights is the Annakirche, which has been an important pilgrimage destination and stopover on the St. James' Way since the Anna relic came to Düren in 1501. The relic of Anna, which was the subject of dispute with Mainz and caused turbulent times, was finally given to Düren.

St. Anna is also the patron saint of the annual Anna Fair, which takes place at the end of July and is known nationwide for its impressive rides and diverse exhibitors.

A highlight in the truest sense of the word is the event „Düren leuchtet“ (Düren illuminated), which transforms the city centre into a colourful sea of lights with illuminated buildings and fantastic laser shows at the beginning of November. Smaller markets like the May market, the gourmet market and the autumn market also take place throughout the year and bring a variety of offers to the city. The popular





weekly market, which takes place every Tuesday, Thursday and Saturday, attracts many people to Düren, who combine their visit with a shopping tour in the shopping town of short distances. Because in addition to the large shopping centre „Stadt-Center“, various retailers, specialist shops and department shops offer attractive offers in the city centre, which have something to offer for every taste.

A good starting point for your visit to Düren is the iPUNKT on the market square, where you can obtain city maps and information about what is on offer in the city.

All current information can be found under: www.dueren-tourismus.info



Tourismusinformation: iPUNKT

Markt 6, 52349 Düren
Tel.: +49 (0) 2421/25 25 25
info@ipunkt-dueren.de
www.dueren-tourismus.info
Monday 10 am - 5 pm Tuesday to
Friday 10 am - 4 pm Saturday 10 am - 2 pm

Theater Düren

Unforgettable moments in the Haus der Stadt

© : Hermann Posch



Theater Düren in the **Haus der Stadt** is an appealing venue for artists from all over the world. With its spacious stage, modern stage and lighting technology and formidable acoustics, it offers the best conditions for operas, operettas, ballets, plays and concerts.

The **theatre's program** includes around 100 performances per year including concerts by the Cappella Villa Duria, chamber concerts by the Vereinigten Industrieverbände and lots of special events from the world of musicals and cabaret, not to mention projects by clubs in the local area. The theatre hall is also used as a ballroom, for exhibitions, markets and fairs.

Theater Düren

Stefan-Schwer-Straße 4-6
52349 Düren
www.theater.dueren-kultur.de

Tickets iPunkt,

Markt 6
52349 Düren
Phone +49 (0) 2421/252525
www.tickets.dueren.de
theaterkasse@dueren.de



Dürener Annakirmes

The largest folk festival in the Euregio Meuse-Rhine



© Stadt Düren



© Stadt Düren

From 30 July - 7 August 2022, everything in Düren will once again revolve around the largest folk festival in the Euregio-Meuse-Rhine: the Annakirmes! Known far beyond the borders of Düren, the Annakirmes attracts almost 1 million visitors every year and is the highlight of Düren's calendar of events!

For one week, around 170 showmen and traders transform the square on the Rur into a colourful funfair world. Numerous children's rides, ghost trains, funfair rides, games, raffles as well as fast and leisurely rides provide for the extraordinary flair of the **Annakirmes! Traditionally, the world championship in cherry pit spitting** takes place on the opening Saturday, 30 July, from 3.00 p.m. onwards on the dog sports field directly next to the fairground. The world record (point at which the stone rolls out) is currently an incredible 22.52 m!

Another highlight of the funfair is the **family day** on funfair Tuesday, 2 August. On this day, all funfair friends have the opportunity to visit the funfair at reduced prices. Half prices on the rides and discounts on the other stalls ensure all-day fun at the fair! On Friday, August 5, there is the big brilliant fireworks: With one of the most spectacular fireworks in the region, the Annakirmes' organisers say thank you to their visitors for nine great fair days. Other special events, such as the senior citizens' afternoon and the Rhenish evening in the festival tent

round off the varied offer of the fair. The "Annakirmesplatz" located on the Aachener Straße is within easy walking distance of the city centre. The Rurtalbahn (Rurtal Railway) stops at the „Annakirmesplatz“ and shuttle buses ensure a problem-free journey to the fairground.

Events:

July 30, 3:00 p.m.: 46th World Cherry Pit Spitting Championship
 2. August, all day:
 Family day with half fares
 3. August, from 3:00 p.m.:
 Seniors' afternoon in the marquee
 5 August, around 10:15 p.m.:
 Large fireworks
 Open daily from 11:00 a.m.

Further dates 2022

9 - 11 March, Spring Festival
 29 April - 1 May, May Market,
 29 April - 2 May, May Fair
 23 October, Autumn Market
 17 Nov - 30 Dec, Christmas Market



Contact: City of Düren

Office for Urban Development
 Schenkelstr. 23 - 52348 Düren
 Phone: +49 (0)2421 / 25 1342
 kirmes@dueren.de
 www.annakirmes.de



Paper Museum Düren

The material paper in all its facets



© Photo: Peter Hinschläger

Like a folded sheet of paper, the Papiermuseum Düren appears right next to the Leopold-Hoesch-Museum in the city centre. The region has been shaped by the paper industry for almost 450 years. To date, well over 100 companies are still active in the industry. Since 1990, this important material for the region has been presented in all its facets in the Düren Paper Museum - since 2018 in the spectacular new building designed by Cologne architect Klaus Holtenbeck. His material qualities, social relevance, production technology and processing as well as future viability, sustainability and the subject of **paper art** are presented.

The Papiermuseum Düren is a museum to touch and focuses on inclusion. Media stations and tactile objects convey the exhibition themes interactively. Visitors can become creative themselves at traditional **paper making** and in workshops.

Contact:

Papiermuseum Düren

Wallstraße 2-8 · 52349 Düren

Phone +49 (0) 2421/25-2561

papiermuseum@dueren.de

www.papiermuseum-dueren.de

Opening hours

Di-So 10:00 a.m.-5:00 p.m.

Do 10:00 a.m.-7:00 p.m.

Closed on Mondays

Leopold-Hoesch-Museum

Diverse art collection and changing exhibitions



© Photo: Peter Hinschläger

With its diverse exhibitions and collection, the Leopold Hoesch Museum, founded in 1905, offers a cross-section of art history from classical modernism to the present. Among the highlights of the collection are works by Otto Dix, Wassily Kandinsky, Paul Klee and Marianne von Werefkin, but also the kinetic light room by Otto Piene, into which viewers can immerse themselves as if into another world. In addition, the museum is dedicated to important positions of international contemporary art and cultural-theoretical topics with temporary exhibitions.

Guided tours and workshops as well as a regular film and lecture programme round off the art education. After your visit to the museum, discover unusual gift articles in the shop or enjoy refreshments in the museum café.

Contact:

Leopold-Hoesch-Museum

Hoeschplatz 1

52349 Düren

Phone +49(0)2421/25-2561

museum@dueren.de

www.leopoldhoeschmuseum.de

Opening hours

Di-So 10:00 a.m.-5:00 p.m.

Do 10:00 a.m.-7:00 p.m.

Closed on Mondays



Jülich is worth the trip

Historic fortress and modern
Research city



When someone goes on a trip, they always come back with stories to tell. Anyone who visits the Duchy of Jülich is guaranteed to pack a whole arsenal of interesting information, new impressions and experiences in their luggage – whether on a hiking break along the paths of the Pilgrims of St. James, by bike on one of the many cycling routes leading through and around the city, or on the tracks of the VIA BELGICA.

It is perfect for exploring on longer visits as well as day breaks. As the city's „trade-mark“, the citadel is an absolute must to visit. The Jülich Citadel is one of the best-preserved fortresses dating back to the Early Modern Period in the German-speaking world. The east facade of the ducal castle in the style of the Italian High Renaissance is an architectural masterpiece.

There is an exhibition on the history of the complex and the former duchy of the Holy Roman Empire in the castle cellar. The 90,000 square metres of meticulously restored fortress with its ramparts, corridors and casemates is particularly impressive. In the Citadel Museum, visitors can find out more about the history of the building and city – and if they book a tour in advance, they can enjoy a wonderful opportunity to explore Jülich and discover how the city got its name.

Located in the middle of the city, the citadel naturally lends itself as the ideal setting for



numerous events in the city, which attract visitors every year not just from the Eifel region, such as the artisans' market in mid-June, which has been running for over 25 years.

As a melting pot of creativity, the event presents a unique variety of works of art made by women. Every year, more than 30,000 people come to the market and all their senses enjoy a real treat. Visitors can be assured to see a mixture of traditional and modern handicrafts not found anywhere else.

But let's not forget the wine festival on the second weekend of July, the beer market at the beginning of September, the children's culture summer in August in the Renaissance garden, music concerts in the citadel's castle and the traditional Christmas market. It's impossible for anyone not to enjoy their stay in Jülich!

For further information on guided tours in Jülich contact the Jülich Office of City Marketing on 02461-63418, or email them at stadtmarketing@juelich.de and visit www.juelich.de/gaestefuehrungen.

Contact: City Jülich

Office of City Marketing
Große Rurstr. 17, 52428 Jülich
Phone +49 (0) 2461/63418
stadtmarketing@juelich.de
www.juelich.de/gaestefuehrungen



ENERGETICON Alsdorf

The energy experience museum
in the heart the urban region



A place full of energy

The fact that ENERGETICON is more than just a normal mining museum quickly becomes clear to every visitor who enters the first room of the exhibition. You are immersed in another world. If you look up, you are looking directly into our sun, day and night. Walk the path of energy alone, with your family or in groups of up to 25 people. Starting with the big bang, over fossil fuel extraction to regenerative energy.

Underground - through time to the origin of energy

Feel, hear and smell the mining that was carried out here on the Anna II site until 1983. Let one of our miners explain his „Kull“ to you during a guided tour. During the authentic tour through „his“ mine, he will let you see and experience mining through his eyes. Experience the pride that can still be felt throughout the site when our miners tell you about their time underground.

Touching expressly permitted...

...at the exhibits and experimental set-ups in the regenerative part of the „Energy Experience Museum“. Guests of all ages can try out what forms of energy there are, how they are generated and how the forces that occur there can best be used and controlled.

Test for yourself which type of set-up is most effective for wind turbines, feel the solar energy and supply a small town with electricity through your own muscle power.



Something new every now and then

When you visit our ticket office, just ask about the current special exhibition. Whether it's a picture exhibition or our Sleeperoo overnight event in the Kaue. There is sure to be something for you. In the months from March to October you can also book a pit frame climb or a guided trip to the adjacent nature reserve of the slag heap landscape park.

One day is not enough?!

If one day of visiting the Energy Experience World wasn't enough for you, no problem! Get one of our annual tickets or rent our premises! Whether school classes, company or private events, we offer the space for your ideas.

ENERGETICON gGmbH

Konrad-Adenauer-Allee 7
D-52477 Alsdorf
info@energeticon.de
www.energeticon.de

Opening hours:

Exhibitions: Tues. - Sun. 11 a.m. - 5 p.m.

Guided tours: by appointment

Bistro & Restaurant EDUARD:

Wed. & Thu. 11 a.m.-10 p.m.,

Fri. & Sat. 11 a.m.-11 p.m.

Sun. 11 a.m.- 9 p.m.



Copper town - Stolberg

The Cradle of German Industry



Photo @ Michael Einler



Photo @ Domenik Ketz

For those who visit the great city of Stolberg, with it approx. 60,000 residents in the greater city region, they should bring their curiosity and be open to contrasts. Stolberg encompasses both nature and industry. It embraces history and culture with its lively past alongside modern development.

The medieval castle, the symbol of the city, is perched mightily atop limestone cliffs above the Vicht valley. Beneath the fortification lies the historic, old city centre, which has remained largely intact, with its winding streets and hidden squares.

The unique copper courtyards and 3 historic, old-city churches are witnesses to industrial development and the heyday of Stolberg in the 17th and 18th Century. Besides the city center, 15 other districts characterize city life. The historic village scenes with their rough stone masonry as in the district of Alt-Breinig convey a great deal of historic originality.

The various museums of Stolberg are also worth visiting. There is the museum in the Torburg, dedicated to both history and artisan crafts. In addition there is the Zinkhütter Hof museum, which deals with the industrial and social history of the Aachen region.

The forest village Zweifall has always been dominated by wood, which is why even today there is a sawmill museum. While the buildings are located tightly next to one another, especially in the north of the city, in the south of Stolberg you will find sprawling wooded and

varied recreational zones with numerous nature reserves, providing guests with attractive leisure and free time activities. The wooded areas around the Wehebach Valley dam are located right in the middle of the North Eifel Nature Park.

An important highlight of the many hiking trails located in the region is the Eifelsteig path, which covers more than 300 kilometers leading from Aachen to Trier. The approximately 16 kilometer Copper Route leads to this premium hiking trail, and from the Old Market in Stolberg to Aachen Kitzenhausen it only takes half a day to complete.

Discover the copper city with one of our many tours:

Old Town Tour: Every first Saturday of the month at 3 pm, runs throughout the year
Meeting point: Galminusbrunnen, Duration 1.5 hours
Castle Tour: Every second Sunday of the month at 3pm, from April to October
Meeting point: Entrance Torburg Museum, Duration 1.5 hours
Copper Courtyard Tour: Every third Sunday of the month at 3 pm, from April to October
Meeting point changes, Duration 1.5 hours

Contact: Stolberg Tourism

Phone +49 (0) 2402/99900-80 or 99900-81
 Fax +49(0)2402/99900-82
touristik@stolberg.de
www.stolbertouristik.de



Guided tours in Stolberg

Varied opportunities of exploring the Copper Town



Photo © Paul Nikitin

The Stolberg-Touristik offers visitors and residents alike the opportunity to explore Stolberg on many exciting and entertaining tours.

Guided tour of the old town:

Every 1st Saturday of the month at 11 a.m., all year round

Guided tour of the castle: Every 2nd Sunday of the month at 3:00 p.m., between April and October
guided tour of the Copper Yard: Every 3rd Sunday of the month at 11:00 a.m., between April and October
guided tour with the night watchman: Every Saturday in Advent at 6 pm

Registration is required for all guided tours! Other thematic tours are also on offer:

Amongst other things, there is a herb walk, mushroom walk, elderberry workshop, Stolberg anecdotes and funny stories, a children's tour with the night watchman, a tour on the Stolberg brewery culture and much more.

All guided tours can also be booked for individual groups at the desired date.

Contact: Stolberg-Touristik

Phone +49 (0) 2402/99900-80 or 99900-81
 Fax +49 (0) 2402/99900-82
touristik@stolberg.de
www.stolberg-erleben.de

A place of learning for young and old

Zinkhütter Hof museum and forum in Stolberg



As a museum for the industrial, economic and social history of the Aachen region, the Zinkhütter Hof museum presents the development of one of the oldest industrial regions in Central Europe. The permanent collection is dedicated to the themes of „Stolberger Gold“, „Zink, ein Allerweltsmaterial“ and „Aachener Nadel“. Other exhibitions on varying subjects are also held at the same time.

The museum also offers guided tours and workshops for children and young people. Visitors can furthermore partake in a History Workshop, a Future Workshop or a Museum Workshop in the Zinkhütter Hof forum so that they may learn about the history of their region at a level that is appropriate for their age. The Zinkhütter Hof forum is an extracurricular place of learning with a varied programme that goes far beyond the traditional realms of schooling, education and training.

Contact details:

Zinkhütter Hof

Cockerillstraße 90
 52222 Stolberg
 Phone +49 (0) 2402/903130
www.zinkhuetterhof.de



Add some mustard!

In the historic mustard mill, you can add some mustard! In the picturesque town of Monschau mustard is still made by hand today



You will find us the beautiful town of Monschau, the historic Mustard Mill Monschau, anno 1882, known from radio and television. In the beginning, the Historic Mustard Mill was driven by a water wheel, later by an old transmission that is still in operation. Between the old millstones, the mustard-milling family produces Moutarde de Montjoie, the Monschau mustard, according to their great-great-grandfather's recipe, just like in the old days. Visitors can tour the historic mustard mill and watch the production process. There are mustard creations with a wide variety of flavours, e.g. fruity like redcurrant and fig, hot like chilli and green pepper or sweet like honey-poppy and beer mustard.

In the attached mustard shop, you can try your favourite mustard from the **22 varieties currently on offer**. Due to the floods, the mustard shop has temporarily moved to the Schnabuleum restaurant so that the shop can be renovated. In mid-2022, it will hopefully move back and the restaurant will reopen. In the shop you will also find a range of spirits refined with mustard, coffee-cream mustard liqueur (Moutardino) or mustard gin; a range of sauces such as mustard chutneys, mustard mojo or cheeky mustard fruits and much more. With mustard, you can virtually refine anything.

The nostalgia box for mustard pralines and high-quality mustard treasure boxes are also

wonderful gifts, of which you will find a large selection in all sizes and combinations.

The wine cellar contains over 400 different wines from all over the world. And there is something new, an Escape Room, the „Clemens' Secret“ puzzle room, of course in connection with the „Mustard Mill“.

Contact:

Historische Senfmühle Monschau

Laufenstraße 118 · 52156 Monschau

Tel. +49 (0)2472 - 2245

info@senfmuehle.de www.senfmuehle.de

Guided tours and mill evenings:

Wed. and Fri. 11 a.m. and 2 p.m. Guided tours for individuals (from March to October inclusive), at Corona times always with advance booking. Guided tours for groups of 12 or more are available for 3 Euros per adult and 2 Euros for school children on dates agreed in writing in advance. A new concept for guided tours for children is currently being developed.

Every Thursday there is the **mill evening** with advance reservation. From 6 p.m., a guided tour of the mustard mill followed by a 3-course surprise menu with espresso and „original Monschau mustard praline“.

„original Monschau mustard praline“ and a small pot of mustard as a gift. The meal is currently taking place in a friendly restaurant, the Laufenbachstuben.



Like in the city – but better

Rural and yet everything is available:
Simmerath as an attractive alternative to the city



Simmerath is characterised by many special features: be it the high quality of life not only for families, the proximity to water, national park nature, air quality or the strong local retail trade as well as the range of health services. In the immediate vicinity there is everything you need for everyday life. So it is easy to say with self-confidence: Just like in the city - but better. This is how we are!

Convenient shopping and enjoying nature

With a total of 130 shops, Simmerath offers a wide range of products that invite you to go shopping. Numerous commercial and retail businesses as well as a diverse, modern retail offer fulfil all customer wishes: from washing machines to trendy outfits, from complete e-bike equipment to high-performance garden tools or building materials for home and garden.

Free parking spaces allow stress-free shopping. The numerous cafés and restaurants invite you to round off your shopping trip.

However, those who prefer to take a detour into nature will find many opportunities to enjoy their leisure time around Lake Rursee and in the beautiful villages that belong to Simmerath.

Healthy all round

Simmerath can also score points with its health care services: The Eifelklinik St. Brigida, with its



good reputation and modern medical facilities, is a strong magnet for many people who need treatment beyond the boundaries of the municipality. In addition, with more than 20 medical practices, a large number of specialists are available.

In addition, there are health and fitness offers which are accompanied by trained therapists, trainers and alternative practitioners. For example, treatments and therapies need not be interrupted even during the holidays.

Pure quality of life

Simmerath has proven to have the best air from NRW. Enjoy the soothing power of the fresh, clean air, whether you are hiking, paddling or swimming - Simmerath and the region encourage you to get active.

**We cordially invite you to
to be inspired by Simmerath!
Like in the city, but better!**



Art is Liberating

Heimbach Art Academy: Experience creativity and meet like-minded people



The Heimbach International Academy of Fine Arts is a recognised education and training centre for artistic creation in fine arts in the Rhineland. Its aim is to awaken and promote the creativity of people of all generations, nationalities and professions.

Under scientific supervision, 49 first-class teachers from 14 nations with excellent pedagogical skills in the individual art genres (painting, sculpture, ceramics, drawing, printmaking, photography, film, video, performance) impart knowledge and techniques. The lecturers accompany the students from the idea of a work to its completion, help them to discover their personal artistic expression and support the development of an individual language of forms.



Contact: Internationale Kunstakademie
Hengebachstraße 48 52396 Heimbach
Phone +49 (0) 2446/809700
info@kunstakademie-heimbach.de
www.kunstakademie-heimbach.de

Take off at the Dahlemer Binz Airfield

Experience and explore at the highest place in the municipality of Dahlem



At the region's largest airfield on the **Dahlem Binz** plateau, aviation fans have a wide choice: **Take off to the skies silently in a glider**, explore the great Eifel landscape from above on a sightseeing flight in a motorised plane or **gyrocopter**, dare a **tandem parachute jump** from a height of 4,000m or take a zeppelin or balloon ride.

Also the companies and flying clubs at the airfield provide you possibilities for getting more intensively involved in this hobby. The Air Academy flying school offers an introduction to powered flight, the largest parachute jumping base in NRW, Sky-Fun, provides training in parachute jumping, the numerous gliding clubs are happy to welcome new team members and a gyrocopter licence can also be obtained.

For aircraft owners, the hangars on the Dahlemer Binz offer a popular base.

Those who don't want to take off into the air themselves can watch the flying action from the **restaurant terrace**. Action for amateur racers is offered by the neighbouring **Dahlemer Binz go-kart track**. A quiet alternative is the **hike** around the plateau, through the Schmidtheim forest and past **Schmidtheim Castle** and to the unique **Generations Park**.

www.dahlemer-binz.de
www.kartbahn-dahlemer-binz.de
www.schloss-schmidtheim.de

Place of silence and contemplation

Mariawald Abbey has been a place of prayer and a place of hospitality on the journey through the Eifel for many centuries.



Picturesquely built into the nature of the wild Kermeter above the small **Rursee town of Heimbach**, Mariawald Abbey lies in the midst of greenery and is surrounded by the unspoilt nature of the Eifel National Park.

Mariawald Abbey is a place with an age-old tradition and was the only men's abbey of the Trappist Order in Germany. After the departure of the monks, the current operator of the abbey pursues the goal of preserving this spiritual place, the abbey grounds as a cultural asset and the transfer of values of the former abbey. The abbey church is internationally known as a place of prayer and pilgrimage and is open daily.

Individual group tours of the abbey can be booked daily. An open guided tour takes place every Sunday at 2.00 pm. A visit to the abbey shop and the abbey restaurant round off your stay.

All entrances are barrier-free, and there is ample parking for cars, campers, motorcycles and coaches.

In the abbey shop you will find art and literature as well as the complete range of our own abbey products, such as the Mariawald pea soup, the abbey liqueurs, baked goods, cookies and chocolates. Furthermore you can buy Trappist beer & cheese, grey and brown bread,



bread spreads as well as fresh beef and game from our own meadows and forests.

The abbey restaurant provides with honest, daily fresh monastery cuisine for hikers, holidaymakers & day tourists for the physical well-being. On top of the list of food offers is the homemade Mariawald pea soup. Monastery beers as well as coffee and homemade cakes round off the offer and give strength for body and soul.



Contact: Mariawald Abbey

52396 Heimbach
Phone: +49 (0) 2446-9506-0
Fax: +49 (0) 2446-9506218
info@kloster-mariawald.de
www.kloster-mariawald.de

Opening hours: Abbey restaurant

Mon-Sun and all holidays
10:00 am – 05:00 pm

Monastery Shop

11.00 am – 5:00 pm

Ardenner Cultur Boulevard

Worlds of Adventure to marvel, feast, shop
Shopping culture without restrictions



The **Ardenner Cultur Boulevard**, direct on the German-Belgian border located on the B265 and B 421, invites its guests to marvel, feast and shop. This mixture of original exhibitions combined with a modern shopping street makes the Ardenner Cultur Boulevard a favourite destination for the whole family in any season and always with Sundays and holidays being open for shopping.

The **ArsKRIPPANA** shows the art of nativity scene creation from all over the World. With a unique doll collection the **ArsFIGURA** represents the glamorous imperial period. The **ArsFIGURA** takes us through the glittering imperial age. The **ArsTECNICA** railway collection sets the hearts of model railway enthusiasts pumping.

The **Ardenner Cultur Boulevard** is also a paradise for connoisseurs and gourmets. In the Ardenner Grenzmarkt AD Delhaize customers could well imagine themselves to be in a land of milk and honey: Belgian specialties including pralines, abbey beers or the celebrated Ardennes ham, French top wines and coffee at extremely reasonable prices. **Information:** www.a-c-b.eu

After a shopping spree, what could be better than a little refreshment at **Bistro Old Smuggler**. This cafeteria-bistro is bent on spoiling its guests with first-class dishes. Or how about stopping for a bite to eat at the charming **hotel-restaurant Balter's Landgasthof**. The establishment welcomes guests, groups and



societies of up to 200 people. Newly invigorated, you can then call in at **ArsMineralis**, the specialist store for minerals. Here you can experience and discover a broad selection of minerals, fossils, jewellery, natural cures, gift ideas, as well as art and designer pieces.

Info: www.arsmineralis.net

Ardenner Cultur Boulevard

Contact:

Ardenner Cultur Boulevard

Prümer Str. 55 · D - 53940 Losheim/Eifel

Phone +49 (0) 6557/920630

B - 4760 Büllingen · Hergersberg 4

Phone: +32 (0) 80 548 729

Opening hours:

AD Delhaize – Ardennes border market: daily from 8:30 a.m. to 6:30 p.m., phone +32 (0) 80 – 54 84 33. Bistro Old Smuggler: daily from 8 a.m. to 6 p.m.; fuel station open 24 hours; hotel restaurant Balter: closed on Mondays. during the week closed from 2:30 p.m. – 5:30 p.m., phone +49 (0) 65 57 – 818; Möbelland furniture store: daily from 9:30 a.m. to 6 p.m., phone +32 (0) 80 – 54 90 38. Find everything under: www.ardenner-cultur-boulevard.net



Tupperware of the Middle Ages

History and stories from the life and work of
Raeren stoneware pottery in the castle of Raeren



Tupperware or other plastic utensils that are found in today's households, are the equivalent of the **Rheinish stoneware** from the late Middle Ages, more precisely from the 13th to the 19th century. One of the most important production places of this extremely high-quality ceramic can currently be found in Eastern Belgium, directly on the border with Aachen and Roetgen. Well over 50 families of potters shaped the life of the villages, which have now merged under the name of Raeren.

Over several centuries, they exploited the deposits of rich clay, used the vast forests of deciduous trees to fuel their huge kilns and took advantage of the excellent transport connections. They produced up to 500,000 jugs and pots a year, which from the late 16th century they sold to North America and Southeast Asia.

During the period when the industry was blooming and before European porcelain had been invented, Raeren jugs richly decorated with images and ornaments could also be found on the tables of princes, the clergy and wealthy members of society. The Pottery Museum in Castle Raeren shows how they were produced, the specific technological developments that were required, the skills and artistic creativity behind it all, how the principles of globalisation at the time influenced our region and what the working life of the potters from Raeren was really like.



More than 2,000 exhibits have come together with modern media in our historic rooms and a successful staging of the exhibition. Furthermore, you can download the new Museum app and have a guided tour from the great master potter himself, Jan Emens, through his world.

Around the castle, you can enjoy and explore a peaceful landscape „in the footsteps of the potters“. There is a handy connection on the Vennbahn cycling route and opposite the castle, the Cafeteria Haus Zahlepohl offers a place to stop and regular special exhibitions of the museum in a converted pottery and farmhouse.



Contact:

Raeren Pottery Museum

Burgstraße 103 · B-4730 RAEREN

Phone +49 (0) 87/850903

Fax +32 (0)87/850932

info@toepfereimuseum.org

www.toepfereimuseum.org



Devil's Gorge & Dinosaur Park

From an ancient seabed to a journey through
the history of the earth



This landscape has been shaped by elemental forces: Rock towers, gorges and crevices, mighty trees whose roots cling to the rocks, deeply incised river valleys and fantastic views.

The adventurous sandstone rock world in the south of the Eifel on the Luxembourg border fascinates children as much as adults. Right in the middle: Devil's Gorge.

The hiking trails through the famous gorge are called **Devil's Paths**, and a premium route of the deluxe **NatureHikingPark** is also named after it. If we humans had existed 200 million years ago, we would have packed our bathing suits and flippers for the excursion to the southern Eifel. Because, if you walk through the Devil's Gorge, you're walking on an ancient seabed. What animals would we have encountered there, what did the landscape look like, what was the climate like back then? Answers to these questions can be found in the **Dinosaur Park**, just a few steps away from the Devil's Gorge.

Here you can marvel at the creatures that populated the earth back then, in true-to-life reconstructions. We learn why the Dilophosaurus with its striking crest and pointed teeth was called the „Devil's Gorge Saurian“.



The journey through the history of the earth takes **more than 600 million years** in the large prehistoric park with around 180 models, including mammoths and Neanderthals and even future animals.

Science can be experienced live in the **Paleo-Lab**, the fossil preparation centre: Here, visitors can watch a taxidermist carefully working original dinosaur bones and the remains of other extinct animals and plants out of the rock. If you want to try out for yourself how much skill and patience you need to uncover real fossils, the park's research camp is the right place to be.

CONTACT:

Dinosaur Park Teufelsschlucht

Nature Park Centre Teufelsschlucht
Ferschweilerstraße 50 | 54668 Ernzien
Tel.: +49 (0)6525 / 93393-0
www.dinopark-teufelsschlucht.de
www.teufelsschlucht.de

OPENING HOURS

Dinosaur Park:
12 Mar-6 Nov 2022 daily 10am-6pm.
(for registered groups daily from 9 am)
Nature Park Centre:
12.3.-6.11.2022 daily 11 am 6 pm



„We stand in amazement in front of the 23-metre-long Diplodocus, whose babies are just emerging from their eggs, and look up at the Tyrannosaurus Rex on its rock.“

Kermeter Alpacas

Discover your alpaca experience!



If you want to be close to the gentle alpacas, you can experience these fascinating animals in different ways together with us.

Guided hikes

You can experience nature with ease and rediscover slowness. Escape the hectic pace of everyday life and let yourself be inspired by your rest seeking companion. The alpacas set the pace on the leisurely two-hour tour. Our hiking tour takes place on paths along the Eifel National Park. The fresh air, slightly hilly landscape and free view over land and fields promises to be a harmonious experience.

Alpaca - meadow time

If you don't like hiking, but want to spend the relaxed time with the alpaca herd, you can visit the alpacas on their meadow. Whether alone, with friends or family, you are welcome to do so. You will learn all kinds of interesting facts about the funny clowns and you can let the tranquillity of the alpacas take effect on you. Experience the curious creatures with their relaxed nature in the herd. Very soon you will feel a special connection to these extraordinary animals and enjoy the atmosphere of peace and quietness.

Donkey hike with alpaca visit

The guided donkey hike is aimed at families with children from the age of six as well as adult



donkey lovers. After the one-hour hike with our dwarf donkeys, we visit the alpacas on the alpaca field.

Alpaca - sponsorship

With us you have the possibility to take over a sponsorship for your chosen favourite alpaca!

Experience voucher

A great gift idea for any occasion, whether it is a birthday, Christmas or for a dear friend.

We would be happy to introduce you to the world of alpacas and make an appointment for you!

Opening hours

Dates by arrangement or according to our website.



Further information, photos, also of our alpacas, are found under

www.kermeter-alpakas.de

Frank und Beatrix Kelleners

Kermeterstr. 28

52396 Heimbach-Hergarten/Eifel

Phone +49 (0)157 34527624



Visitors Mine „Grube Wohlfahrt“

All year round attraction for young and old in the National Park



The „Lead Ore Mine Wohlfahrt“ is located near Hellenthal-Rescheid. It was operated from the end of the Middle Ages until shortly before the beginning of the 2nd World War. Today the sub-surface working world of past generations is accessible in the form of a visitor mine.

No day of rest! The daily guided tours depart every day from the „pit house“ of the Rescheid mine, with shop and small exhibition, down a convenient staircase to the spacious „depths of the mine“. The pure, pollen-free mining air has a year-round temperature of only 8° C! Sturdy shoes and warm clothes are therefore recommended.

Explore the mysteries of inanimate nature!

Visitors to the mine can also admire the colorful mineral developments of the petrified beach of Eifel primordial lake. A visit to the underground world is also a special experience for children. Original preserved rock drawings of miners dating back to the 19th Century will even convince the sceptics: there are once dwarfs working in the „Grube Wohlfahrt“!

Contact: Visitors Mine „Grube Wohlfahrt“

Aufbereitung II Nr. 1 · 53940 Hellenthal
Heimatverein.Rescheid@t-online.de
www.GrubeWohlfahrt.de

Guided tours for individuals

Daily from 11.00, 14.00 and 15.30 hrs Groups of 6-8 persons are advised to book in advance! Special programme for larger parties of visitors. For information Phone: 02448-911140 (daily between 10.30 -16.00 hrs)

Kart track Dahlemer Binz

An experience for the whole family!



With us you will experience motor sport up close! The feeling of being in your own racing car!

No matter whether you are a first-time kart driver or already a practised high-speed racer. We have the right kart for everyone.

From 130 cm height and an age of 8 years, even the youngest can get a taste of racing. For even younger children, handicapped persons or for every co-driver, **twin karts** are also available, with which you can experience the driving fun for two. For ambitious drivers, we keep our fastest karts ready for pure racing feeling. Group events with exclusive use of the track are possible from 8 people onwards by prior arrangement. Our 1122-metre-long track guarantees a wonderful driving experience against a fantastic Eifel backdrop.

Reservations by telephone are recommended, especially during the holidays. Please note the general information on our home page and the current Corona protection measures.

Contact:

Kartbahn Dahlemer Binz GmbH

Dahlemer Binz 80 · 53949 Dahlem
Tel.: +49 (0)2447/1866
www.kartbahn-dahlemer-binz.de

From 15 March to 31 October daily - except Mondays - from 11.00 a.m. to 7.00 p.m. (closed in case of persistent rain)



Daun Wildlife and Adventure Park

Fancy exotic animals, nature, fun and games? Then a trip to the Daun Wildlife and Adventure Park is just the right thing for you!



© Andre Tietze

In the heart of the Volcanic Eifel lies one of the most fascinating natural areas in Germany, the Daun **Wildlife and Adventure Park**. In a magnificent mixed forest covering 220 hectares, visitors can expect many surprises on an 8 km long car safari.

Experience red deer, fallow deer, sika deer, wild pigs, mouflons, llamas and wild horses, Cameroun sheep, aurochs and bison in the wild. The animals can be observed, photographed and fed from six viewing platforms.

Another attraction is the accessible, **six-hectare monkey gorge**, where a lively colony of 45 free-living Barbary macaques has found a new, species-appropriate home. Nearby is the bird of prey station, where the falconer shows visitors the flight behaviour of his birds during daily flight demonstrations (except on Fridays). In addition, the 800 m long summer toboggan, run in front of the Wildlife and Adventure Park, offers an exciting experience for young and old.

A very special highlight for children is a giant carpet slide, the large adventure playground with a gigantic climbing mountain 5.50 metres high, two huge bouncy cushions and many other attractions.

In the adjacent „mini animals' farm“, which is home to mini pigs, rabbits, squirrels, alpacas and emus, sheep and goats, meerkats and catt-

le, among others, children can even get up close and personal with the animals!

From 2018, a new highlight awaits you at the Wildlife & Adventure Park Daun: as of this year, you can experience our kangaroos up close in their large walk-in enclosure.

The café-restaurant „Waldhaus Hirschberg“ with its hearty cuisine offers the opportunity for a snack. At our monkey's gorge you now also have the opportunity to visit our cosy bistrot with sun terrace and a playground for the children.

CONTACT:

Wild-und Erlebnispark Daun

Wildparkstr. 1 · 54550 Daun

Tel. +49 (0)6592-3154

Fax 06592-957405

www.wildpark-daun.de

erlebnispark-daun@t-online.de

OPENING HOURS

15.03-15.11 from 10.00 am - 6:00 pm

(Last admission 5:00 pm)

16.11-14.03 from 10.00 am - 4:00 pm

(last admission 3:00 pm)



Big Game Park Rhineland Kommern

“Experiencing nature up close”



- Quickly accessible via the A 1
- beautiful forest and meadow area
- over 200 native wild animals
- outdoor enclosures
- Grandstands and viewing areas
- Small animal enclosures for the youngest visitors
- Adventure playground
- Café with terrace
- Picnic areas
- Barbecue areas for a fee (booking required)
- Event backpack for children's birthday parties
- Free audio guide tour via smartphone
- Forest education and guided tours on request
- Free spacious parking spaces
- Dogs are welcome on a lead
- One area of the park is barrier-free only partly

Located at the foothills of the Eifel, the Big Game Park is an excursion destination for the whole family at any time of the year.

In the middle of magnificent forests elks, wild pigs, Hungarian grey cattle, red, fallow and Sika deer are leaving their tracks. Especially impressive are the extensive wild pig enclosures and the near-to-nature experience of various local animal species, which can be watched up close without separating fences. Generous path ways, resting areas and observation stands at the fee-



ding grounds invite for hiking tours into the wild. On the large adventure playground with ropeway, climbing scaffolds, slides and many things more children can frolic to their hearts' content.

After a long hiking tour the “Waldhaus”, located at the game park, invites for something to drink or eat on the beautiful patio of the restaurant.



Contact:

Big Game Park Rhineland

Becherhoferweg 71
53894 Mechernich-Kommer
Phone +49 (0)2443 / 6532
Fax +49 (0)2443 / 911 828
info@hochwildpark-rheinland.de
www.hochwildpark-rheinland.de

Open all year round: March to October:
daily from 09:00 a.m. to 06:00 p.m.
November to February daily from
10:00 a.m. to 05:00 p.m.



Krewelshof Eifel

Happy moments for the whole family in
Mechernich-Obergartzem



The Krewelshof Eifel is situated in the middle of its own orchards and fields. On the way to the Eifel National Park the Krewelshof offers many small and big moments of happiness for the whole family.

Farm market - the shopping experience: browse for tasty marmalades, gifts from the Eifel, lots of handmade products and granny's old recipes, the popular plum herb, and some herbal products from the herb garden. Tip: be sure to try the goat's cheese from the Krewelshof cheese dairy! Accompanied by fresh bread from the farm bakery.

Lake Krewelshof stretches directly from the **café terrace**. The farm is as multifaceted as its visitors: Whether families of all sizes, school classes, companies or wedding guests - the Krewelshof is a great place to experience and relax together. At the many events, conviviality and joie de vivre are at the centre of attention. Children are especially welcome.

Children and family programme: The large area around the Krewelshof lake is ideal for children to discover nature. The straw castle, the herb workshop (reservation), the extensive corn labyrinth under the open sky, the busy children's pumpkin carving, and the cheerful pumpkin show at night with barbecue and cocktails at the lake are all tempting at this time of year. From the middle of November open to the public is



the covered real ice rink and the Christmas post office - now it's Christmas time at home again at Krewelshof Eifel - drop by!

Gastronomy - the experience of freshness:

The Hof-Café offers a rich breakfast buffet, including coffee specialities, daily from 9 a.m. in the bright North-Eifel ambience. From 11:30 a.m. onwards, the farm chefs will conjure up fresh lunch dishes from the open kitchen, and the colourful cake buffet will once again be tempting.

Opening hours café: Mon-Sun 9:00 a.m. - 6:00 p.m. Boathouse on the lake - relax or celebrate to your heart's content: whether convivial at the long family table or relaxed or on the terrace by the lake - with a delicious piece of homemade cream cake or a glass of champagne you can enjoy the view.

Visit our Tourist Information Centre and take the latest information on the National Park and Eifel tourism with you.

Krewelshof

Natur. Genuss. Lebenslust.
EVENTLOCATION KÖLN & EIFEL

Contact: Krewelshof Eifel

Krewelshof 1 · 53894 Mechernich-Obergartzem
Phone +49 (0) 2256/95988300
www.krewelshof.de



Mysterious ducts and pits!

The pits and excavation chambers of the Günnersdorf visitor's mine lead into the underworld of Mechernich

Photos: Stadt Mechernich/Ralph Sondemann



The ore mining at the Mechernich Bleiberg (lead mountain) is more than 2,000 years old. Celts and Romans already were digging for ore here. The Günnersdorf mine in Mechernich was created in the second half of the 19th century, the blooming of mining, and was operated with interruptions.

During World War II, the pits served as air-raid shelter for the people of Mechernich. Mining operation was completely terminated in 1957. Since 1995 the Günnersdorf mine is a visitor's mine with a museum.

In the mining museum you can admire tools, pit lamps and uniforms of the miners. An expert mine guide accompanies the visitors, providing insight to the geology, mine history and early production procedures of the Günnersdorf mine.

With the salute "Good luck" ("Glückauf") the visitors are going underground. Before, they all are equipped with a helmet. As there is a temperature of only 9° C all year round, adequate clothing is recommended. Sandals or high heels are unsuitable. In the galleries and channels the visitors get an impression of the difficult conditions under which the ore has been mined by the workers.

During the 1 _ hour tour the mine guide can tell lots about the Mechernich lead ore mining and the mining history of the region.



Excitement and adventure is promised to children at the age of ca. 6 to 14 years by the treasure hunt in the Günnersdorf visitor's mine. At the end, all participants will get a certificate which distinguishes them as treasure hunters. A hike under the aspect of mining history leads through the accessible part of the former premises. A large barbecue hut can be rented on the property of the mining museum.

Contact: "Förderverein Bergbaumuseum Mechernich e.V."

Bleibergstraße 6

53894 Mechernich

Phone +49 (0) 2443/4 86 97

Fax: +49 (0) 2443 - 82 04

bergbaumuseum-mechernich@t-online.de

www.bergbaumuseum-mechernich.de



Look for balance – Book nature

Directory of hosts 2022



Detailed information regarding certified national park hosts and offers of "barrier-free accredited" companies is available at www.nationalpark-gastgeber.eu.

Enjoy your stay
Your **Gastgeber Nationalpark Eifel**
(Eifel National Park Hosts)

**Gastgeber
Nationalpark
Eifel**



Eifel National Park Hosts...

... feel it their duty to uphold the philosophy and goals of the national park.

... fulfill the given quality and environmental criteria for ecological, economical and social sustainability.

...regularly participate in further training relating to the Eifel National Park.

...inform their guests about the numerous possibilities for active enjoyment of nature in the national park, as well as about the ideas, goals and rules of the conservation area.

Administrative Office Gastgeber Nationalpark Eifel

Seeufer 3
52152 Simmerath-Rurberg
Phone: +49 (0)2473. 9377-17
Fax: +49 (0)2473. 9377-20
info@nationalpark-gastgeber.eu
www.nationalpark-gastgeber.eu

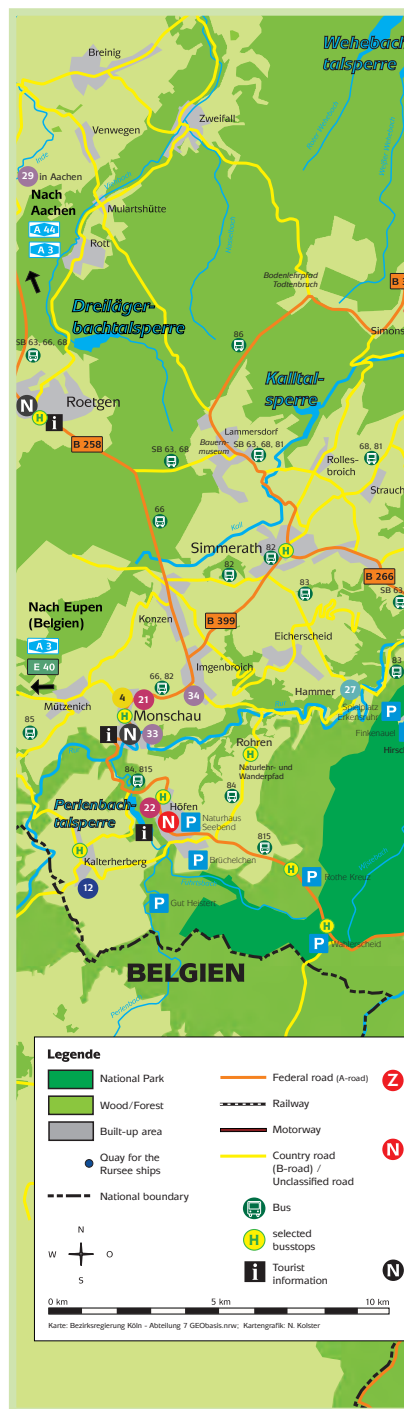
Bookings Hotline

+49 (0) 6551. 96 56-0
www.eifel.info

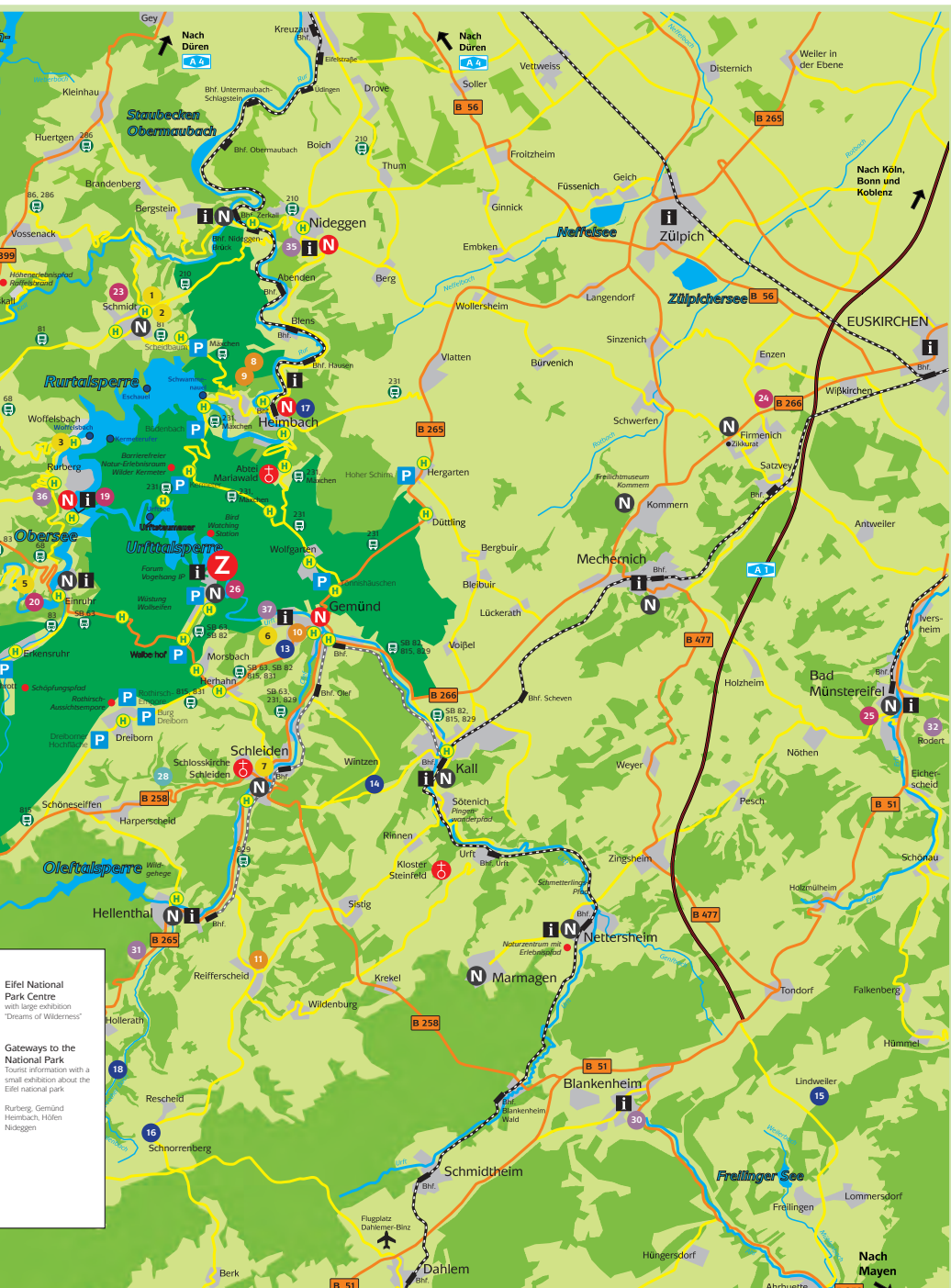


- 1 **Hotel Haus Seeblick** Nideggen-Schmidt
- 2 **Hotel Roeb** Nideggen-Schmidt
- 3 **Hotel Zum kleiner Seehof** Simmerath-Woffelsbach
- 4 **Hotel Lindenhof** Monschau
- 5 **Hotel-Restaurant Haus am See** Simmerath-Einruhr
- 6 **Hotel-Restaurant Haus Salzberg** Schleiden-Gemünd
- 7 **Hotel Eifelkern** Schleiden
- 8 **Pension-Ferienwohnung Haus Diefenbach** Heimbach-Hasenfeld
- 9 **Eifelblümchen Apartments und Zimmer** Heimbach-Hasenfeld
- 10 **Pension Müller - Zum alten Rathaus** Schleiden-Gemünd
- 11 **Gästehaus Im Tal 18** Hellenthal-Reifferscheid
- 12 **Ferienwohnung Küpper** Monschau-Kalterherberg
- 13 **Gemünder Ferienpark Salzberg** Schleiden-Gemünd
- 14 **Ferienwohnungen Pielorz** Schleiden-Wintzen
- 15 **Ferienwohnung Bertram** Blankenheim-Lindweiler
- 16 **Ferienwohnung Eifelblick** Hellenthal-Schnorrenberg
- 17 **Ferienappartements Haus am Giebel** Heimbach
- 18 **Ferienhaus Eifelsonne** Hellenthal-Ramscheid
- 19 **Restaurant Genießer Wirtshaus** Simmerath-Rurberg
- 20 **Restaurant Eifelhaus** Simmerath-Einruhr
- 21 **Restaurant Rur-Café** Monschau
- 22 **Alte Molkerei** Monschau-Höfen
- 23 **Café & Bistro im Wildpark Schmidt** Nideggen-Schmidt
- 24 **Hofcafé im Krewelshof Eifel** Mechernich
- 25 **Café Ertgold** Bad Münstereifel
- 26 **Panoramarestaurant Vogelsang IP** Schleiden
- 27 **Campingplatz Camp Hammer** Simmerath-Hammer
- 28 **Naturcampinganlage Schafbachmühle** Schleiden
- 29 **Jugendherberge Aachen** Aachen
- 30 **Jugendherberge Burg Blankenheim** Blankenheim
- 31 **Jugendherberge Hellenthal** Hellenthal
- 32 **Jugendherberge Bad Münstereifel** Bad Münstereifel-Rodert
- 33 **Jugendherberge Monschau-Burg** Monschau
- 34 **Jugendherberge Monschau-Hargard** Monschau
- 35 **Jugendherberge Nideggen** Nideggen
- 36 **Jugendherberge Rurberg** Simmerath-Rurberg
- 37 **Jugendherberge Gemünd Vogelsang** Schleiden

Host-categories:



- Hotel
- Half board
- Holiday Apartment
- Restaurant/Bistro
- Camping
- Youth Hostel



Look for balance – Book nature



H. Gräbe

Hosts certified as offering barrier-freedom

There are offers for both disabled and nondisabled guests from selected national park hosts. Altogether 9 concerns have been classified as qualified and suitable for target groups by the Nationale Koordinationsstelle Tourismus (NatKo). „Barrierefreie Gastgeber Nationalpark Eifel“ is a united project of the Eifel National Park Administration and the North-Eifel Nature Park e.V..



Packages

Connoisseur packages provided by National Park hosts facilitate your planning for a relaxing day trip or short vacation. Look forward to experiencing varied hikes and bicycle tours, the best food, and of course the hospitality of our dedicated hosts. All this guarantees unforgettable days in the Eifel National Park discovery region.

www.nationalpark-gastgeber.eu

www.facebook.com/GastgeberNationalparkEifel/

Bowling and Lasertag

In the Zikkurat culture and recreation factory, the possibilities for excitement and fun will blow you away!



At the **BOWL factory**, sport and entertainment come together in a multifunctional centre: the Zikkurat culture and recreation factory. The BOWL factory is located in the unique setting of the original Stoneware Factory Custodis, which dates back to 1882.

Visitors can smash their next strike on one of the 16 Brunswick bowling lanes. But it doesn't end there. There's also billiards and darts for both young and old to pit their wits against each other.

The in-house restaurant serves international dishes and cool drinks & cocktails. The BOWL factory is also an event venue. For around 120 guests, it offers the ideal setting for Christmas and company celebrations, business events and private parties.

Contact: BOWL Factory

An der Zikkurat 4
53894 Mechernich-Firmenich
Phone +49 (0) 2256/959049
www.bowl-fabrik.de

Opening times:

Monday/Tuesday: Closed Wednesday -
Friday: from 3 pm
Saturday: from 2 pm Sunday: from 12 pm
If you present this leaflet, you will receive a one-time 10% discount on the standard rate at the BOWL factory if you book a slot for at least 2 hours. This discount cannot be used in conjunction with other offers.



In a **1,000-square-metre arena**, players can have an explosive time in a high-tech Laser Tag shoot-out – action-packed fun and an adrenaline rush are guaranteed. A great way for young and old alike to have fun, no matter what the weather.

Players get a phaser and a vest and try to earn as many points as possible. The game takes place in a dimly lit maze where the obstacles are decorated in fluorescent colours. To succeed requires teamwork, stamina, accuracy and a tactically intelligent approach.

The arena is located on the ground floor of the former factory, making it accessible for visitors in wheelchairs. And there is also a bar and restaurant in the neighbouring BOWL factory.

Contact: Laser Tag Arena Zikkurat

An der Zikkurat 4
53894 Mechernich-Firmenich
Phone +49 (0) 2256/9571653
www.lasertag-zikkurat.de

Opening times:

Monday / Tuesday: Closed Wednesday -
Friday: from 3 pm
Saturday / Sunday: from 12 pm
If you present this leaflet, you qualify for the 2-for-1 offer in the Laser Tag Arena
Offer: Play two missions but only pay for one.
Cannot be used with other offers, valid for one person only.



HUGODROM

3000 m2 indoor action park
for the whole family



Everybody who comes here has the time of their lives. No matter whether you are small, big, old or young, you can jump, roll, skate, bounce, see-saw, climb, crawl, relax, and go crazy.

Attractions:

- DNA tower with slide and rope tunnel for fearless climbing enthusiasts.
- Large skater track with steep curves for fast runs
- Dance machine with cool beat for funky moves
- Mega-ball pool
- Ninja action course
- Game paradise for little ones
- Trampolines for high-flyers
- Pirate hopping ship for jumping pirates and much more
- Try & buy: HUDORA products to try and to buy in the SHOP.

* Please book early for fun parties in our birthday rooms.

HUGODROM

An der Zikkurat 4 · 53894 Mechernich
Phone +49 (0) 2191/4489304
mechernich@hugodrom.de

Admission: Children age 0-2, free
Adolescents age 3-18 7 9, Adults 7 4.50
Evening rates on weekdays from 5 pm:
Adolescents age 3-18, 7 5, Adults 7 2

Opening hours:

Mon, Tue, Thu, Fri 12:00 p.m. – 7:00 p.m.,
Sat & Sun* 10:00 a.m. – 7:00 p.m., Wed rest day:
Safe free climbing in dizzying height

Adventure world Eifeltor

The leisure centre for the whole
family in the middle of nature



Thrill-packed rides are guaranteed on the 680 m summer toboggan as well as on the off-road quad track and the children's quad course. Attractive are the guided quad bike tours to the most beautiful places of the North Eifel and into the National Park. **Skill is necessary on the 18-hole mini golf course.** Popular with children: the playground with electric swing, electric crane, excavator and trampolines. Hunger and thirst can be satisfied in the restaurant and on the outdoor terraces.

Indoor playground with skating rink:

Please see our website for our opening hours. Groups/school classes by arrangement. Other days on request. Ideal starting point for a holiday in the Eifel is the adjoining hotel with guest lounges and event hall. Each 1st Sun. of the month the hotel restaurant Eifeltor offers a rich breakfast buffet, as well as each year a large Christmas buffet and the big country festival in Nov. Many dishes as well as fresh wafers and various burger variations invite you to stay.

Contact: Adventure world Eifeltor

53894 Mechernich-Kommern
Phone +49 (0) 2443/98 13 51
info@erlebniswelt-eifeltor.de
www.erlebniswelt-eifeltor.de

Opening Times

At the start of the Easter holidays to 31 Oct.:
daily 10.00 am to 6.00 pm, in the NRW summer holidays to 7.00 pm. Groups by appointment.
Direct access to the Rheinische Freilichtmuseum with discounted combi-tariffs.



Flying Fox-Park Seepark Zülpich

The biggest zip line and climbing park in the region



Photo: © Alexander Zink-faszinator GmbH

Fly as free as a bird at up to 40 kilometres per hour over the Seepark Zülpich and water sports lake. The Flying Fox Park is the biggest zip line and climb-ing park of its kind in the city triangle of Cologne-Bonn-Aachen. It has two different courses, each with six ziplines, at heights of between eight and twelve metres and a total length of 815 metres. The fun beginners and pros can have flying and climbing is endless, no matter whether they are 10 or 99 years old!

With plenty of activities, the Flying Fox Park is a great day out for schools; private groups can celebrate birthday parties and companies can book a team building event. And we haven't forgotten the smaller visitors: there is a children's cable car, which has been funded by Förderverein Gartenschaupark Zülpich.

Contact: Seepark Zülpich

Am Wassersportsee 7
53909 Zülpich
info@seepark-zuelpich.de
Phone +49 (0) 2252/52345
www.seepark-zuelpich.de/flying-fox-park

Opening times:

From 1 April to 31 October,
Fri 1.00pm – 6.00pm (last run at 5.00pm)
Sat., Sun. & public holidays:
11.00am - 6.00pm (last run at 5.00pm)
From Monday to Thursday the facility is only open for groups that have pre-booked.

Nideggen Castle and castle museum

A journey back
in time



Burg Nideggen can look back on an illustrious past and is a cultural unique monument to the history of the Middle Ages in the Rheinland and Eifel regions. The castle was build from the 12th Century onwards as a residence for the Counts of Jülich. Since 1979, the keep has housed the Castle Museum. Opposite the keep the castle restaurant warmly invites you to a view out onto the Rur-Eifel region. Today, Düren district council looks after the castle and the castle museum.

Nideggen castle museum invites the visitor to take a tour of discovery into the Middle Ages: Walking around the exhibition rooms the visitor is transported through culture and time to the everyday world of medieval castle life and experiences the chivalry and the economic culture of the Middle Ages in an authentic environment: In the dungeon, the visitor can even hear the fate of Burg Nideggen's prisoners. A 9 m2, multi-media presentation illustrates castle life and first hand, shows how the castle was destroyed. The castle museum offers an extensive program of events as well as workshops and guided tours.

Opening times: Tuesdays-Sundays

from 10.00 - 17.00 hrs
Last admission is at: 16.30 hrs
Phone +49 (0) 2427/63 40
Fax +49 (0)2427/90 28 85
burgenmuseum@kreis-dueren.de
www.burgenmuseum-nideggen.de



Schmidt Wildlife Park

At home in the Eifel



Farm round extended at Schmidt Game Park

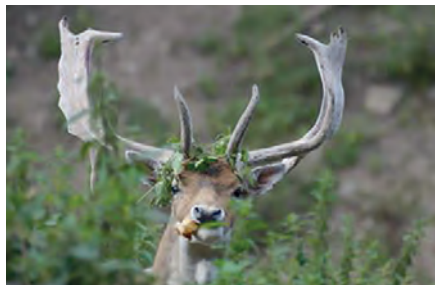
Right next to the large adventure playground for big and small children, visitors can get up close to the nagging goats in the walk-in goat enclosure. In addition, the donkeys Antje, Heidi, Wuschel and co. are waiting to be groomed and cuddled in their area above the playground.

The Scheidtweiler family has renewed all the paths. For people with walking difficulties, parents with small children and all walkers among us, there is now also a short farm circuit that runs along above the game park. Visitors can also see a variety of animals on this short route: Goats, birds of prey, rabbits, guinea pigs, geese, running ducks etc., pot-bellied pigs, Cameroon sheep, donkeys and on the left a short view of the deer enclosure.

The regular walking trail is about 5 km long and leads mostly through the newly designed outdoor enclosures, which are very large and spacious and have been adapted to the animals' natural habitat. You can see red deer all year round (no outdoor enclosure), but also fallow deer, sika deer and mouflons, all of which can be fed, as well as various species of ducks and Egyptian geese on the ponds.



In 2022, **the falconry** will once again have a new addition: another black and red kite will join the existing kites Ewald and Hildegard.



In the **café and bistro** there are many coffee specialities and the famous homemade cake. Pudding or poppy seed crumble, gooseberry, cherry, apple or apricot crumble and much more, as well as baked cheesecake (Sat./Sun.) - there is something for everyone here. If you want to satisfy your hearty appetite, you can choose from specialities such as sandwiches with deer ham from our own production or a large selection of soups. Here you get quality at fair prices.

On Sundays and public holidays there is a large breakfast from 9:30 a.m. to 11 a.m. Served are the game park's delicious home-baked rolls with cold cuts platter and much more that the heart desires. Telephone reservation is required.



Contact: Wildpark Schmidt

Wildparkstraße
52385 Nideggen-Schmidt
Tel.: +49 (0)2474-215

The opening hours of the park and the café as well as the entrance fees to the park can be found on the homepage at www.wildpark-schmidt.de.

Adventure Golf Fun in Kallbach

Kallbach's exceptional 18-hole Adventure Golf Course guarantees fun and excitement for both young and old



Nestled in the idyllic Kall Valley in Hürtgenwald-Simonskall, the new leisure highlight is right next to the Landhotel Kallbach. This varied Adventure Golf Course extending over 3,000 square metres, ingratiates the trend sport from the USA, which has arrived in Kall Valley. The lanes in Kallbach's Adventure Golf Course all have natural obstacles, water, stones and wood purposefully placed in a terrain shaped differently from the surrounding landscape. Visitors can enjoy playing this innovative recreational game through animal sculptures, tree trunk courses and even through a water wheel. There are different challenges and levels of difficulty to master. The rules of the „proper“ game of golf have been modified.

Players are taught these rules at the start – you must listen carefully as they are crucial for the game. It is a game that offers a lot of fun and entertainment for teams, families with children and groups. Who can sink the ball in the hole with the fewest swings, despite all the unusual obstacles? It is not just about being sporty, but more about skill and creativity.

Of course, it is up to each individual to train as often as they want to improve their „handicap“ ... If you feel like having a drink after your round of Adventure Golf, you can sit by the course on the terrace or in the cosy restaurant of the Landhotel Kallbach. Where you could be treated, for example, to yummy waffles and delicious food.

Prices/Tickets

Tickets are only available from the reception at the Landhotel Kallbach. Adults 7 7.50 • Children (under 12 years) 7 6.50 Schools: 7 5 p.p. (Tue - Fri) • Group from 10 people (prices per person per round (18 holes) incl. ball and club rental, 1 score card.) No golfing skills required. Minimum age requirement: 9 years. Free Kids Green for younger children's birthdays, group, corporate events. For reservations, planning and catering call Tel.: 02429 9444-0

Opening times March - October:

Daily from 10 am until dusk*

November to February: Tues. – Sun. from 10 am until dusk*

Also open all year in good weather.

Opening hours for school groups and groups by appointment.

Last admission: 1.5 hours before closing.

*The opening times may vary depending on the weather. There are sufficient parking spaces available.

Information and bookings:



Landhotel Kallbach:

Phone +49 (0) 2429/9444-0

Simonskall 24 - 26

52393 Hürtgenwald

www.kallbach.de

www.eifelgolf.com



High-Ropes Course Hürtgenwald

In addition to adventure and fun at lofty heights, experience the wonderful nature and more.



The family-friendly **high ropes course** in the region offers a special experience for the whole family with its 130 individual elements divided into different courses and 1400 m of high ropes. Here, visitors can experience adventure and thrills. At lofty heights a completely new space can be explored.

Even children from 6 years of age can climb high up and meet the challenges between the trees. Smaller children can experience small adventures, creativity and stories in low forest regions. There is something for visitors of all ages. In addition, our offer includes outdoor courses in tactical self-defence.

Krav Maga is a self-defence system with easy-to-learn solutions for everyone.

Relaxation, stress management and resilience in nature is also our theme for you. We offer you Yoga, ShinrinYoku (forest bathing) and resilience training in nature.

Yoga has a harmonising effect on body and mind. Yoga practiced regularly and then in nature has many health benefits. The immune system is strengthened and blockages are released.

In Shinrin Yoku (forest bathing) we go into the forest without any intention. The exercises reduce stress and improve the ability to con-



centrate (also for children with ADHD) and it provides for a better mood.

Resilience is the „mental immune system“. Through resilience training in nature, we learn to deal with crises unscathed. The existing protective factors and resources are mobilised. Resilience training is available as individual or group training.

In the **Hürtgenwald high ropes course** you will have a very special experience for individual visitors, families, groups, companies and school classes. There is something for everyone. We will be happy to provide you with further information at the contact details below.



Contact: Petra Zalfen-Harzheim and Marcus Zalfen

Phone +49 (0)2427/905438

info@hochseilgarten-huertgenwald.com www.hochseilgarten-huertgenwald.com

GPS arrival: 50.66578 6.34296,
B399 Forest entrance way opposite the
village 52393 Raffelsbrand



Weiss print shop museum in Eifel National Park

Black art in the green countryside



Experience the exciting world of „black art“! We will take you on a journey back in time to witness the life of the printing industry – from more than 5,000-year-old Chinese characters to Egyptian hieroglyphics and the state-of-the-art offset printing of the modern era.

It is an interactive museum, which is also ideal for workshops, seminars, presentations and private parties thanks to its modern multimedia space.

Opening times

Open to individual visitors from October to March on Sundays from 1 pm to 4 pm. The entrance fee includes a free guided tour that starts at 2 pm. For groups of 8 or more people, we can open the museum on request, on the day of your choice!

Admission fees

Single ticket £5, Family ticket £10
Our prices for group tours and workshops for children are listed here:
www.druckereimuseum-weiss.de

Weiss Print Shop Museum

Am Handwerkerzentrum 16
52156 Monschau
Phone +49 (0) 2472/982-982
Fax +49 (0) 2472/982-105
info@druckereimuseum-weiss.de
www.druckereimuseum-weiss.de

DiscGolf Gemünd

New and free offer for
all age groups



In the Gemünd spa gardens there is a new **leisure activity** for the whole family, for young and old.

DiscGolf is a trend sport from Finland, which is easy to understand and learn. Skill is just as important as choosing the right throwing strategy and the right disc.

The playing principle of **DiscGolf** is similar to that of „normal“ golf. Instead of club and ball, however, there are flying discs similar to the frisbee, which are available in different shapes and weights. Instead of a hole in the ground, the ball is putted on a metal basket. Similar to golf, the aim is to play the course with as few throws as possible. At least as important as a good result is getting together and having fun at the game.

The **DiscGolf course** in the Gemünd Kurpark comprises nine holes. The course is accessible free of charge. Flying Discs can be borrowed at the National Park Gate Gemünd for a fee or purchased for a fee.

Contact:

Gemünd National Park Info Point
Dreiborner Str. 59
53937 Schleiden-Gemünd
Tel. +49 (0)2441. 2011
www.nordeifel-tourismus.de



Rain or shine

The Bubenheimer Spieleland offers games, fun and adventure for young and old, regardless of the weather - **open all year round.**



© Natalie Meyer

Expansion of the playground by 30,000 sq m with a huge water landscape, raft basin and playable water tower. In addition, the new panorama hall offers protection in all weathers. This makes a trip to the Bubenheimer Spieleland weather-independent and in any situation. safe and stress-free.

Children and adults, kindergar-

ten groups, school classes and clubs can play, romp and experience an unforgettable adventure to their heart's content. **The indoor and outdoor areas** are open all year round. The large adventure playground has a climbing park, water playground, boat water slide, giant carpet slide, go-kart track, football area, climbing pyramid, trampolines, monkey swing, water and sand playground, the 3000 sq m big all-weather hall with 16-person trampoline, climbing frame and climbing wall and many other play opportunities for young and old.

In the play paradise children explore on two levels of the playable organic farm on two floors. It goes through the farmhouse to the barn and from there to the maze. The smallest children find their own area in the play store.

Adventure golf course: 12 holes on 1800 sq m with varied natural elements. Whether alone or together with friends – always a successful pastime.



During the winter season, the two all-weather halls with go-karts, climbing frame and trampoline facility, as well as the two indoor areas on the farm offer numerous play opportunities.

The outdoor area is also open during the winter season and, depending on the weather, the climbing park and the carpet slide can be tried out. For the physical well-being, the kiosks and the gastronomy offer a variety of food and drinks.

Opening hours and prices:

Open all year round

Indoor and outdoor: 19.03.2022 to 01.11.2022

Daily 9:00 a.m. – 7:00 p.m.*

Sat/Sun/Holidays/Holidays

11,00 €

Mon-Fri (on school days)

Winter Season: 02.11.2021 until 18.03.2022

Sat/Sun/Holidays

10:00 a.m. - 6:00 p.m.*

6,00 €

Opening hours are subject to change, due to weather conditions.

CONTACT:

Bubenheimer Spieleland

Bubenheim Castle

52388 Nörvenich

Tel. +49 (0)2421/486400

kontakt@bubenheimer-spieleland.de

www.bubenheimer-spieleland.de



Discover the legend in you!

On a journey of discovery with the recreational activities
at the Nürburgring



On board the various simulators and rides, visitors to the Nürburgring will get to explore the legends behind the track. Here, racing enthusiasts of all ages are chasing the best lap times or changing tyres at record speed at the Formula 1 Pit Stop Show.

Another highlight of the Motorsport Experience Museum is the spectacular and lifelike 24-hour race in 4D, where visitors can enjoy one of the biggest motorsport events in the world from a very special perspective.

The multi-media „Green Hell“ theatre promises an experience for all ages that will give you goosebumps. Here, visitors get a complete experience of the history of the „First Mountain, Race and Test Track“, including the sounds and the smells, starting with the construction of the Nordschleife.

As part of Wolfgang Graf Berghe von Trips' 90th birthday celebrations, the exhibition area „Knight, Rider, Racer“ was opened in May 2018. Visitors can learn about the personal side of the legendary racer.

The ring cinema is also one of the Nürburgring attractions. It plays cutting-edge films on one of the largest 3D cinema screens in the region, as well as offering comfortable seating with plenty of legroom.

The backstage tour opens doors that are normally closed to the public. You can visit the pit



lane, podium, paddock and media centre. During the one-and-a-half-hour tour behind the scenes of the legendary racetrack, no secret remains hidden and no questions are left unanswered.

If you just want to take a quick look at the pit lane and the starting / finish line, you can do this from the grandstand.

Visitors of all ages can battle for first position and feel the thrill of real racing on the karting track. There are no exhaust fumes but the karts are fitted with the sound experience of real racing car and provide real e-motions with their powerful electric drive along the 400-metre indoor track.

CONTACT: Nürburgring 1927 GmbH & Co. KG

Information Centre
Otto-Flimm-Str.
53520 Nürburg
Phone +49 (0) 800/20 83 200
info@nuerburgring.de

OPENING TIMES:

The daily opening times are listed at
www.nuerburgring.de/oeffnungszeiten



Ahoy, you landlubbers!

Sailor and pirate adventures
at Vlatten Castle



© Tom Bombadil

Picturesquely located in the Heimbach district of Vlatten, a former **moated castle** will provide the perfect backdrop in 2022 to immerse yourself for a few hours - or the whole weekend - in a time when men were made of iron and ships were made of wood. With the event „Pirates - An Adventurous Journey through Time“, Winterhoffs Entertainment sets new standards in terms of lovingly and perfectly equipped historical events on the theme of „seafarers and pirates“.

The pirate adventure focuses on pirates of all ages. Everyone is invited to become part of the action and learn more about life on land and at sea. There will be plenty of action, music, programmes, hands-on activities, a market and camp life. From 15 to 18 August 2022, everything that makes a real pirate adventure is hidden behind the walls of Vlatten Castle.

This includes scary, exciting pirate stories, an energetic fencing show, a rope making machine, where ropes and skipping ropes are spun, as well as cannon and muzzle-loading demonstrations. **Tickets and info at:**
www.piraten-abenteuer.de



Contact:

Winterhoffs Entertainment

Ralf Winterhoff

Tel. +49(0)172-2623650

info@winterhoffs.com

Across the eras

„Romantika“ - The Romantic
Time Travel Market



© Tom Bombadil

In 2022, Romantika will once again combine the fantastic with real worlds. Under the motto „Be when you want. Be where you want“, visitors will be guided through the ages.

From 16 to 18 September 2022, people of all backgrounds are invited to immerse themselves in the Middle Ages, the Baroque era, the Victorian era and the Belle Epoque. But watch out! Pirates and crooks are also up to mischief and must be distinguished from real gentlemen.

A colourful open-air spectacle is offered on the grounds of Heimbach's picturesque Hengsbach Castle. Artists, musicians, actors, show elements, trade, gastronomy, performing crafts and trades as well as performers make the Romantika world truly colourful and unique. Whether as a performer or visitor. Whether actively dressed or curiously civil. Everyone has the opportunity to enrich and shape this event with their presence.

Tickets, information and opening hours:
winterhoffs.com

Contact:

Winterhoffs Entertainment

Ralf Winterhoff

Tel. +49(0)172-2623650

info@winterhoffs.com

Magic of the Advent Season

Christmas story comes to life in Heimbach

© Tom Bombadil



The **Christmas Carol**, probably the best-known work by the **English author Charles Dickens**, was published in 1843. The Christmas market at Hengebach Castle in Heimbach takes the Christmas Carol, as it is called in the original, as its theme on all four week-ends of Advent. The characters come to life and transport visitors back in time to Victorian England. Lovingly designed market stalls will be integrated into romantic corners and niches on the grounds. High-quality, unusual, curious and sometimes bizarre goods will be on offer.

Delicacies and tasty drinks round off the offer. Throughout the day, visitors will be enchanted by a changing cultural programme at various locations in the castle. The Charles Dickens Christmas story will be performed as a short play. All this will spread an **unforgettable Christmas flair of the year 1850**, which will be especially effective in the evening hours, namely when the castle, picturesquely bathed in light, will radiate its very own charm.

Tickets, information and opening hours:
winterhoffs.com

Contact:
Winterhoffs Entertainment
Ralf Winterhoff
Tel. +49(0)172-2623650
info@winterhoffs.com

A visit to Waschbär, Prähiehund & Co.

There is always so much to see and do at the Alsdorf Animal Park



Come visit the meerkats, prairie dogs and much more.

At the Alsdorf Animal Park there is so much to experience every time you visit, because the only free-entry zoo in the region makes for a great family day out.

From the petting zoo, where children can feed and stroke the goats, to the large duck pond and red deer enclosure, you can come and meet the park's many animal residents during a tour of the grounds. Set in the middle of lush nature by the pond, the park also offers plenty of variety.

A large playground with a giant slide, a raft pond and a climbing frame ship can be enjoyed by visitors as well as the new adventure golf course, where you can play a round of mini golf in a very special setting.

If you are arriving by car, you will only pay 3 euros for your parking space for the whole day. The fun park is already included!

Contact:
Alsdorfer Freizeitobjekte GmbH
Stefan Heffels,
Phone +49 (0) 157/73 52 00 36
info@tierpark-alsdorf.de
www.tierpark-alsdorf.de



Brückenkopf-Park Jülich

Leisure and recreation for all in the family



The 33-hectare Brückenkopf-Park in Jülich offers **plenty of leisure fun**. Walking paths lead through blooming gardens, theme gardens and woodlands. The zoo is home to native animal species, but also to arctic wolves, lynxes, kangaroos, meerkats, otters and exotic birds.

Various children's areas invite youngsters to climb and romp around. The forest playground and climbing tower in the 'Stadtgarten' and especially the 'kids n' all' playground with its raft pond provide limitless opportunities for fun and games. Using the youth camp which is located directly in the park, extra-curricular learning can now take place over several days in different 'classrooms'. An assault course featuring high ropes, a skating rink, rock climbing, mini-golf, a beach volleyball court and a small playing field means that children will never be bored. A varied programme of events and a restaurant are also available.

Visitors can retrace history, when walking in the 'Stadtgarten'. This is where Napoleon ordered a 900 m long fortress building to be built in the shape of a crown. Parts of the 200 year old fort are still accessible today and provide insight into the world of military life way back then.

Visitors of the park, children and youth groups as well as transient travelers can stay overnight on the camper van site offering 25



parking spaces with power connection. In addition a youth camping site with sanitary facilities, barbecue and separate playing area is provided. Please call 02461-979519 or 9795-26 for further information. New is the „JUFA“ youth hostel at the park. You can find further information on this at: www.jufa.eu

Opening hours:

March to October daily from
09:00 a.m. – 06:00,
November to February daily from
10:00 a.m. – 04:30.

Admission prices:

Adults: 8.00 EUR
Children taller than 1 m: 5.00 EUR
Children under 1 m: free
Families: adults 6.00 EUR
Children 4.00 EUR
Group rate from 15 persons
Adults: 7.00 EUR
Seniors from 65 years: 6.50 EUR
In the winter time (Dec.-Feb.)
reduced entrance prices
Included in the entrance price is
the use of the Energy-Experience-Pavilion!

Contact: Brückenkopf-Park Jülich gGmbH

Rurauenstr. 11 · 52428 Jülich
Tel. +49 (0) 2461/97950
Fax: +49 (0) 2461/979522
brueckenkopf-park@t-online.de
www.brueckenkopf-park.de



Welcome in the indeland!

...a landscape in motion with lots of room for fantasy, fun, nature, energy and perspectives!



Foto: JaninaPhotography/stockadobe.com



Foto: Thomas Hinz

Climb up the Indemann, the architectonic landmark of the indeland, and have a look on the changes in the landscape. Over twelve experience levels, 216 steps lead up to the viewing platform, where in 36 meters height you have a far, spectacular all-round view of the unique panorama with the constantly changing open-cast mining landscape Inden.

Another fantastic view is offered to visitors of the indeland on the Sophienhöhe, a re-cultivated spoil heap in the open-cast mining area Hambach. In the East of Jülich the Sophienhöhe rises 300 meters in the air and thus prominently overlooks the flat fertile plains. Due to re-cultivation measures, the Sophienhöhe offers a vast field for leisure time and recreation opportunities in a green environment with a path-network of about 100 kilometres as well as numerous viewing points and resting places.

For cool down on hot summer days the Blaustein lake is the ideal leisure time tip in the indeland. The 96 hectare relic lake of the former open-cast mining site Zukunft-West, owes its name to the area north of Dürwiß, which was once called "Am blauen Stein". From April to October water sports enthusiasts find a local recreation area for sailing, surfing, swimming or diving.

Also as regards culture the indeland hides many treasures. The only museum for sheet glass painting in Germany is located in the indeland community Linnich and in Langerwehe visitors can visit an exhibition as well as the pottery

workshop of the popular pottery museum as well as the Eifel market. Another visitor attraction in the indeland is the fortification of the citadel Jülich, the visit of which can easily be combined with a detour to the Brückenkopf-Park.

Further information on the indeland is obtained at the following institutions:

InfoCenter indeland railway station
Langerwehe Bahnhofplatz 14,
52379 Langerwehe
Phone +49 (0) 2423/4073851
infocenter@langerwehe.de

Opening hours:

Tue., Wed., Fri. and Sat. 10:00 a.m.–12:00 a.m.
and Sun. 10:00 a.m.–04:00 p.m.

Indemann 52459 Inden Altdorf

Phone +49 (0) 24653948,
indemann@gemeinde-inden.de

Opening hours and elevator:

Mon.-Fri. 02:00 p.m.–08:00 p.m., Sat. 02:00 p.m.–10:00 p.m. and Sun. 10:00 p.m.–08:00 p.m.
(from Nov. to the middle of April excl. Sat. and Sun 02:00 p.m.–04:30 p.m.)

Tourist Information Jülich

Opening hours April – October: Wed.-Fri. 10:00 a.m.–12:00 a.m. and 01:00 p.m.–04:00 p.m.,
Sat and Sun. 11:00 a.m.–03:00 p.m., 11th of Nov.–23rd of Dec. 10:00 a.m.–08:00 p.m.
(on the Christmas Market).

These are available at all information points in the indeland or under www.indeland.de for direct download.



Heinrichshof in Blankenheim

Creating unforgettable memories, at the
Heinrichshof in Blankenheim



Who loves nature and has a heart for animals is always welcome at the „Heinrichshof“ in Blankenheim.

Far away from the traffic, situated on the heights of the northern Eifel, you have a gigantic view which extends to the Nürburgring. The core business of this dreamlike area is still the riding school for young and old, as well as the horse boarding house with boxes and endless meadows.

But if you want to really enjoy the area, you can stay overnight. Four redesigned construction wagons, which stand in the middle of the farm, offer space for a maximum of 16 people. Surrounded by horses and other animals you will experience unforgettable days and nights. The individual domiciles are furnished in such a way that there is room for four people.

A small kitchen with a cosy sitting area is part of the equipment. In a separate sanitary carriage there is a shower for each unit. In any case, there are lots of great things to experience on the „Heinrichshof“.

A barbecue area invites you to eat bread on a campfire and the meadow game „Hufball“ promises fun for young and old. Similar to the „Farmer's Golf“ it is tried with a club, which has a horseshoe attached, to manoeuvre a handball through 15 obstacles, such as an old carriage. This entertaining game is free of charge and an



absolute highlight for families and senior citizens.

But not only guests of the farm, but also all other visitors, can play for free. Anyway, hikers, with and without horses, are welcome, after all, the „Heinrichshof“ is located directly at the Eifelsteig hiking trail.

In addition, the recently opened rider's shop is an ideal starting point. On an area of around 20 square metres, a comprehensive range of products, from currycombs to halters and treats, is on offer. Anything that is not in stock, for example matching horse blankets, can be easily ordered from the farm's contact persons.

More under:
www.heinrichshof-blankenheim.de

Contact us:
Heinrichshof 1
(Nonnenbacher Weg/
corner of Mühlenweg)
53945 Blankenheim
Tel.: +49 (0) 2449/9195387
info@heinrichshof-blankenheim.de



The new variant of golf

Farmer's Golf - recreational fun for everyone in Kall-Keldenich



When you play farmer's golf, you can safely leave your caddy, golf clubs and good shoes at home, because this trendy sport from the Netherlands is a little different – it's rustic. While the real golf game is played with a handicap and needs to be played on accurately cut grass, farmer's golf is dominated by the natural environment around you.

The Margaretenhof in Kall-Keldenich provides a funny variation of the golf game which requires no previous knowledge of the game and offers a boundless degree of fun for young and old alike.

The 10-hole course at the Margaretenhof, where the owner's cows graze from time to time, has a total length of about 1.5 km, with track lengths of 100 to 300 meters and a 40 metre elevation difference. Playing time is around one and a half hours.

The aim of farmer's golf is to bat (with a wooden shoe and broom handle) the leather ball the size of a handball with as few strokes as possible through a pre-arranged set of holes. Players can expect a well or other obstacles on the course.

Farmer's golf also is a unique experience for family festivities, birthdays, company excursions, school classes and clubs. New is the farmer's café "Margaretenhof". Here homemade



cakes, wafers or small snacks are offered to complete your day after a game.

Enquiries can be made in the club room at the Margaretenhof where coffee and homemade cakes, waffles and small snacks are served.

Opening times from May to October:

Wednesday to Friday from 2.00 p.m.,
Saturday and Sunday from 10.00 a.m..
Other appointments can be arranged in advance.

Prices: Adults pay 6 EUR; 4 EUR for children up to 14 years of age.

A discount applies to groups.

Want to have some fun?
Then look no further:

Farmer's Golf Andrew and Cilia Gentz

Margaretenhof
53925 Kall - Keldenich
Phone +49 (0) 2441 - 770528
Fax: +49 (0) 2441 - 4561

info@bauerngolf-eifel.de
www.bauerngolf-eifel.de



Shared experiences are more fun

At the Nature Centre Eifel you can experience a lot



Exciting and instructive programmes in a unique flora and fauna, in a landscape where testimonies of the past are visible: This is what our scientific staff of the Eifel Nature Centre and the Nettersheim Educational Centre offer you.

For school trips, group trips, club excursions, children's birthdays, company parties and excursions, we are exactly the right contact. We put together individual packages according to your wishes, whether outdoors or indoors, with or without overnight stays, a few hours or a few days. Let us know what you are interested in and we will take care of the rest. We also tailor our hygiene concepts exactly to the respective regulations for your protection.

Would you like to investigate life in a stream? Search and prepare fossils? Bake bread like in great-grandmother's time? Climb high up in the natural forest? Practice a piece of music on cajons? Take a trip back in time to the Romans?

Solve a crime in the archaeological park? Search for and process herbs? Working with wood? Get creative in our black light theatre? Taking part in Roman Olympics? You can do all this and much more in our activity programmes for groups. Let us advise you or just have a look here: www.naturzentrum-eifel.de



In our nature experience village Nettersheim we provide for accommodation for every taste for trips lasting several days:

- The youth hostel for school classes, Groups, hikers, families (we also offer flats) and individuals. On request with full board.
- The Eifelhaus for groups who like to provide for themselves.
- The Buurehüsje, for all those who want to live like in great-grandmother's time.
- The tavern with its guest rooms in a Roman ambience.
- The monastery for sophisticated demands
- The mobile home harbour with 25 parking lots in the middle of nature.

Let us advise you:

Naturzentrum Eifel in Nettersheim
Urfstraße 2-4, 53947 Nettersheim
Phone +49 (0)2486/1246
naturzentrum@nettersheim.de
www.naturzentrum-eifel.de

Opening hours:

Mon - Fri 9:00 a.m. – 6:00 p.m.
(Nov - April 9 – 4:00 p.m.)
Sat - Sun 10:00 a.m. – 6:00 p.m.
(Nov-April 10:00 a.m. – 4:00 p.m.)



Recreational fun for the whole family

Recreation and winter sports area
„Weisser Stein“



Hollerath and Udenbreth „Weißer Stein“ (610-690 metres above sea level) are the most famous winter resorts in the region on the left banks of the Rhine. In Udenbreth „Weißer Stein“ there is a downhill slope with a T-bar lift up to 550 m long and a toboggan run with toboggan lift up to 350 m long. Cross-country skiers will find a total of five trails, one in Udenbreth, one in Hollerath and three in Losheimergraben. In addition to a sports field, the „Weißer Stein“ leisure complex offers a spacious children's playground with a bouldering wall.

The „Weißer Stein“ leisure complex also has a spacious playground for children next to a sports field. The general public can use the covered barbecue area, which is integrated into the playground, and, with further covered seating options it is the ideal place for a family outing. Another highlight is the observation tower with a ridge height of 30 metres, with the installed „Eifel View“ and information on the different viewing angles.

Tourist information and Hellenthal National Park Info Point

Rathausstraße 2 • 53940 Hellenthal

Phone +49 (0)2482/85 115

Fax +49 (0)2482/85 114

tourismus@hellenthal.de,

www.hellenthal.de

winter sports weather

Information about the snow conditions and opening times can be found at www.hellenthal.de or the snow line: 02482- 85 200.

Olefufer leisure facility Hellenthal

Play and leisure facility
for all ages.



The **Olefufer leisure facility** in the heart of Hellenthal is a play and leisure facility for all ages.

The bed of the Olef stream is accessible via a flight of steps with seating possibilities and invites visitors to take a break by the water. In addition to the classic play equipment for swinging, climbing, sliding and balancing, the little visitors will find a trampoline, a shovel excavator, a red wooden play train, a climbing spider and a water playground to let off steam.

There is also outdoor “fitness equipment” for both young and old alike.

A red wooden house in the shape of a wagon was built in the style of an old fashioned railway station that was in this area a long time ago. This can be rented through the Hellenthal local council for smaller private parties.

Tourist information and Hellenthal National Park Info Point

Rathausstraße 2

53940 Hellenthal

Phone +49 (0) 2482/85 115

Fax +49 (0) 2482 / 85 114

tourismus@hellenthal.de

www.hellenthal.de



Bathing tradition in Aachen

Enjoy pure wellness at the Carolus Thermen on the edge of Aachen's spa gardens



Even the ancient Romans appreciated the hot Aachen springs for their healing and soothing effects and celebrated a comprehensive bathing culture in spacious, luxurious thermal baths. Today, the Carolus Thermen Bad Aachen offer a superlative range of wellness facilities.

The heart of the Carolus Thermen is the bathing hall supported by imposing columns. Here you can immerse yourself in the bubbling healing power of Aachen's thermal waters. Active and passive experience zones, hot and cold water grottos, cascades, a flow channel, the soothing „Strokkur“ brine steam bath as well as an inspiring relaxation room with a salt-radiating system invite you to relax. You can experience a „day by the sea“ in the OCEANUM in a 40-minute session.

The **sauna world** offers Finnish saunas, a beautifully landscaped sauna garden with sauna lake and sun terraces, an oriental bathing world and a ladies-only area (Feminarium). A total of twelve steam baths and saunas at different temperatures invite you to relax in the four areas. Numerous infusion ceremonies and free care rubs round off the feel-good experience in the sauna world.

In the **Carolus spa**, body, mind and soul are pampered with a wide range of treatments. Whether tension-relieving massages, nourishing facial and body treatments, gentle pee-



lings, invigorating body wraps or exclusive wellness ritual packages for well-being alone or as a couple - at the Carolus Spa everything revolves around your well-being.

Three different restaurants leave nothing to be desired in terms of cuisine. From healthy bistro snacks to the culinary variety of exquisite à la carte cuisine, the gastronomy in the Carolus Thermen offers everything for a well-rounded day of well-being.

Between sauna sessions, people meet in the „Auszeit“. Holiday atmosphere with a view of the thermal area can be experienced in the „Esseria“. The restaurant „Kochkultur“ with regional, seasonal cuisine is open to all guests.

Muscle and joint-friendly aqua gymnastics and meditation are offered several times a day free of charge.

Contact: CAROLUS THERMEN BAD AACHEN

Stadtgarten/Passstraße 79
52070 Bad Aachen
Tel. +49 (0)241 / 182 74 - 0
Fax +49 (0)241 / 182 74 - 2 74
mail@carolus-thermen.de
www.carolus-thermen.de



Treat yourself to RurseeTime

Explore and enjoy the green landscape of the
Rur-Eifel from the water



Embedded in the Rur Valley, there is the Dam Schwammenauel, popularly known as lake Rursee, which lies in the green landscape of the Rur-Eifel. Treat yourself to your very own Rursee time and explore the Rursee with one of our boats. Nestled in the green landscape of the Rur-Eifel, this pleasure promises pure relaxation and it will put a satisfied smile on your face.

Our boat hire service offers various types of boats, including canoes, rowing boats and pedal boats, as well as electric boats for up to 7 people, with which you can sail across the lake almost silently and without any effort. The highlights for holidaymakers are the atmospheric evening cruises and sailing with a skipper. Sailors can charter a classic dinghy cruiser to explore this exciting sailing area and end the day at anchor in a candlelit bay. Our boats can be booked conveniently via the booking portal on our homepage.

RurseeZeit also operates the Schwammenauel sailing school and a boat shop with moorings and accessories shop at our jetty. We offer boat owners a wide range of services, including a comprehensive all-round carefree package with crane service with rigging/rigging and boat maintenance as well as transport from or to winter storage.

Our sailing school is one of the oldest sailing schools in Germany and teaches the basics of



sailing in 11-day compact courses. With our many years of training experience, we impart extensive knowledge and practical skills quickly and comprehensibly. With us, even absolute beginners are able to operate a sailing boat safely and independently after just a few days. The advanced course offered and the individual training courses serve to consolidate and expand on what has been learned. Furthermore, our training programme includes the sailing licence for sports boats.

Find out more about what we offer and our current opening hours on our homepage at www.rurseezeit.de.



RurseeZeit

Kontakt: Rurseezeit

Schwammenauel 12a · 52396 Heimbach

Tel.: +49 (0) 2446/1497

info@rurseezeit.de

www.rurseezeit.de

opening hours

01.04.-01.11.2022, Tue.-Sun.: 10 a.m. - 6 p.m.

additionally in the summer vacation NRW:

Mon: 12 p.m. - 6 p.m.



Welcome on board!

Embedded into the lush green of a large wooded area there is the Eifel Lake District with its fleet of boats near to nature



The Eifel Water Information Centre in Heimbach is an extramural learning centre, a museum and a playground for large and small children. Here you can discover everything about water, the elixir of life. Four different topics are highlighted here:

Nature and the environment

Large aquariums with river and lake creatures, an interactive Eifel- relief model, a water cycle model, a diorama lake shore, a water workshop, a loupe table ...

Water Technology

This includes dams that can be controlled by visitors, turbines and drinking water facilities, a water purification system, modern pumps, old measuring instruments and a well-drill ...

Art, culture, history

The mysterious aqua mystica, sections of the Roman canal, water images, Grandma's laundry room, a collection of washing machines, and a collection of baths, both old and new.

Play and relax

Water garden in the grounds, glass water pipe system, a children's game room, a bistro, gift shop, reading room ... etc.

The car park is located right behind the house, and we are completely free from barriers! We have a large number of moving models, com-



puter stations and simulations, field trips and experiments, so there is always something exciting for all age groups, young and old.

Eifel Water Information Centre

Karl H. Krischer -Platz 1
52396 Heimbach
Tel. +49 (0) 24 46/9 11 99 08
Fax: +49 (0) 24 46/9 11 99 07
info@wasser-info-zentrum-eifel.de
www.wasser-info-center-eifel.de

Versatile programme:

In addition to the trips, in season (season 09.04. -23.10.22), which take place daily according to the schedule, special bookings such as private and company events and evening trips with music and dancing are possible.

23.07.22 Rursee in Flames

€ 38.00 from Schwammenauel and Rurberg
8:00 pm, shuttle boat from Einruhr, Adults
17.00 € children 9.00 €;

27.08.22 Wibbelstetz

from Schwammenauel 8:00 pm, 33.00 €;

27.11.22 St. Nicholas trips

from Schwammenauel 11:00 am. and 3:00 pm,
adults 18.00 €, children 17.00 €.



Canoeing in the Rur Valley

Close to nature in a boat, experiencing the beauties of the Rur Valley from the water



Fun and sportiness is offered by the docile and very capsized-proof open twin-kayaks – ideal to learn canoeing within a short time. The canoeing school Petry offers canoeing on river Rur since 1990, boats and equipment is available for up to 140 persons. After a comprehensive theoretical instruction, the tour will start on river Rur in Heimbach with experienced canoeing instructors in small groups.

River Rur with its various eddies, barriers and small chutes is a popular area for beginners. The 14 km long section Heimbach – Zerkall requires ca. 4.5 hours, including a picnic break. In order to assure nature protection (breeding season for birds), the Rur may be cruised from 15 July to 28 February at a determined minimum level. Also the number of boats is restricted.

The boarding and arrival stations are located as close as 300 m to the stops of the Rurtalbahn railway route Düren-Heimbach – ideal to arrive with public transportation or park the car at the destination in Zerkall. The canoe house in Zerkall is an inviting place at the end of the Rur route. You can change clothes here, find protection in case of bad weather and good partners for your catering.

The Heimbach reservoir is open for canoeing all year round. Canoe trips on the almost stagnant water are pure relaxation. The water quality



is excellent. Enjoy the lakeside with its various landscapes, changing with the course of the seasons. Swans and other water birds can be observed from an adequate space. The Art-Nouveau water power station of the year 1904 is seen over a long distance and may also be visited.

The canoe trip will be completed on the Heimbach reservoir, also in combination with a guided hike. A beautifully located barbecue site directly at the lake can be offered for a cozy get-together at the end (combination tour hiking/canoeing/barbecue). Both variants are very popular for a company outing.

Contact: Dustin Lenz

Buchungssystem: www.kanu-petry.de

Tel.: 01575-0175756

Organised trips / canoe rental:

Basically, all canoe group tours take place accompanied by experienced canoe instructor. Individual canoeists are arranged to small groups and also accompanied. Only those canoeists with sufficient experience may rent boats at the Petry canoeing school. Furthermore the school assists in the organisation of group tours or works outing, as for instance planning of the daily activities, arrival and departure, barbecue, lodging and guided hikes.



Water management in the Eifel

Close to nature in a boat, experiencing the beauties of the Rur Valley from the water



Wehebachställe

Reasons for the construction of the dams

The dams of the northern Eifel are central cornerstones of tourism. This applies not only to the main lake of the Rur dam Schwammenauel, which allows many water sports activities, but also to the impressive wall of the Urfttal dam, the geographical heart of the Eifel National Park. However, the dams were not built for recreational purposes: The uneven discharge behaviour of the Eifel always had negative effects on the lower reaches of the rivers.

In the event of prolonged rainfall or snowmelt, the water on the karst rock quickly ran off. During low rainfall or dry periods, however, the lower reaches became rivulets.

The paper industry, which is strongly represented in the Düren area, was particularly affected. Their factories were often located near the river and they were dependent on an even flow of water in the river.

At the end of the century before last, the well-known hydraulic engineer Prof. Otto Intze was

commissioned to develop proposals for solutions. He proposed the construction of dams to tame the rivers and store water. At first, he himself had the Urft in mind, a very rich tributary of the Rur. From 1900 onwards, he had a wall built in a narrow valley on Mount Kermeter. This was connected with the construction of a power station near Heimbach-Hasenfeld to generate electricity from water power.



Geöffnete Grundablässe der Rurtalsperre





Blick auf die Urftalsperre

Expansion of the dam landscape

Soon the growth of the population and increased hygiene requirements made the dams interesting also with regard to the drinking water supply. The consequence was the construction of further dams and, above all, before the Second World War, the large Rur dam Schwammenauel. It ensured sufficient water supplies for the growing paper industry.

The Second World War interrupted the construction of the dams and caused many war damages, but thanks to increasing needs, new dam projects were soon launched. At the beginning of the 80s of the last century, the construction of the water reservoir "Wehebachtalsperre" marked the end of the development of the reservoir landscape.

The Wasserverband Eifel-Rur operates the large dam constructions

The Wasserverband Eifel-Rur, (WVER) water board, is currently the operator of a large part of the dams. Above all, it owns the large dams, which serve several purposes at the same time: flood protection, storage of water for industry and drinking water treatment:

The Urft dam, storage volume 45.5 million cubic metres. Commissioned in 1905, it is the oldest dam in the northern Eifel.

The Rur dam Schwammenauel, 202.6 million cubic metres. It is by far the largest reservoir in the northern Eifel and was built in two stages: between 1934 and 1938, a filling volume of 100 million cubic metres was created, and a second expansion after the Second World War created the current volume from 1959.

The Oleftal dam in Hellenthal went into operation in 1959 with a volume of 19.3 million cubic metres. It is an architectural gem and was the only dam in Germany that was built from hollow cells placed side by side.



Rurtalsperre – Badestrand Eschauel



Das Jugendstilkraftwerk in Heimbach-Hasenfeld

In 1981 the **Wehebachtal** dam near Schevenhütte was added. It has a volume of 25.1 million cubic metres.

The list of WVER reservoirs also includes the reservoirs Obermaubach (completed in 1935, 1.65 million cubic metres) and Heimbach (1935, 1.21 million cubic metres). They are purely compensating reservoirs for the peak power plants of the upstream valley dams, which during the course of the day release only an uneven amount of water into the lower reaches via the turbines of the hydroelectric power plants.

Recreation on the WVER dams

A touristic use of the water areas is usually not possible, because especially dams, which are also used for the supply of drinking water, must

be protected. Water sports enthusiasts, on the other hand, find a home at the Rur dam Schwammenauel. There are two designated bathing areas for swimmers (Eschaul and Neue Mitte Woffelsbach). Otherwise, the lake is available to sailors, surfers, paddlers, anglers, divers and Rursee shipping. Anglers need a fishing permit. All drivers of sports vehicles must have a recognised boat driving licence or surfing licence. Information is available at the tourist information points or directly from the Eifel-Rur water board (WVER).



Contact details and further information about the association,

which is also responsible for wastewater treatment, flood protection measures and the maintenance and natural development of running waters, can be found on the homepage www.wver.de.



Staumauer der Olefalsperre

The heated open air pool in Heimbach

Fun, sport and recreation for the whole family



Heimbach's heated open air pool is located directly on the Rur in the Eifel national park. Great for families, with a water temperature of 24°C and spacious grounds it offers its visitors a large pitch for sports/activities. Whether you want to spend your leisure on the sunbathing meadow, in the 25 x 12.5m swimming pool with its diving area, swim your laps, play beach volleyball or table tennis with your friends... you'll find plenty on offer here!

In the splash pool, a splash shower and a fun fountain ensure bathing fun and refreshment with water depths of 15-45 cm over three pools. The 678m², kidney-shaped non-swimmer area is somewhat more turbulent. The spaces on the island are highly sought after. Footballs, volleyballs, table tennis balls, table tennis bats and diving rings can be borrowed from the from the pool free of charge. In the swimmer's shop, visitors not only can buy clothing for swimming in, but water toys as well.

Contact: Heimbach open air pool

Auf Wissen Woog · Tel.: +49 (0)2446 - 3196
www.freibad-heimbach.de

Stadtverwaltung Heimbach

Tel. +49 (0) 2446/808-41 · Fax 808-88

Openings times

May, June & Sept. Mon. to Fri. 2 p.m.-6 p.m.,
Sat., Sun. & holidays 11 a.m.-7 p.m. July & August daily from 10 a.m.-7 p.m. In case of bad weather the opening hours may be different.
www.freibad-heimbach.de

bootsverleih-rursee.de

Moved by nature – water and land adventures at Lake RurWasser



Experience Rursee proactively in a kayak or take it easy in an open canoe.

Boat hire:

- Open canoes, kayaks
- Pedal boats
- SUP

We offer customized programs for schools, clubs, corporate outings and team events:

- Guided canoe tours (in boats for 2-8 people)
- Raft building
- Archery
- GPS rallies
- Climbing in trees and the crags

Accommodation:

You can also stay overnight. You can choose from the following options

- Self-catering house for 60 people
- Log cabins for up to 48 people
- (Circus) wagon for up to 35 people
- Campsite for up to 150 people

Kontakt:

NabeDi-Camp

Promenadenweg 5
52152 Simmerath-Woffelsbach
Phone +49 (0) 2473/93 78 400
info@naturbewegt.dich.de
www.naturbewegt.dich.de
utm: 32U 03150323 5611644



On water and land

The Rursee is a paradise for athletes and families hungry for exercise



Spontaneity is good, but taking a lot of leisure gear with you isn't. Joachim Schellberg's cycle and canoe hire shop in Rurberg hires out e-bikes, touring bikes, children's cycles and even sidecars/seats for the very youngest. The route goes up and down hills around the lake. It is a very varied tour covering 30 kilometres which can be halved by taking the Rursee boats out onto the water. On request, we can also provide you with our trailers, which can transport 16 bicycles, so you can get your wheels to a different starting location.

The water also attracts people who want to discover the lake in all its facets with 4-man canoes or versatile kayaks. The advantage: The canoes are unsinkable, and you can stow away your valuables so they don't get wet, no matter what the challenge. Previous knowledge in the art of paddling is not required.

Fahrrad- und Kanuverleih

Joachim Schellberg at Reifen Jansen
Auf dem Stein 19 · 52152 Simmerath
Tel. +49 (0)2473/29 57
Mobile +49 (0) 151-15 63 90 44
Fax +49 (0)2473 - 3676
kanuverleih-rurberg@gmx.de

Canoe rental:

Advance registration early requested under
Tel. +49 (0) 151 15 63 90 44.

Natural outdoor bath Einruhr

Swimming in harmony with nature and a unique panoramic view



When the summer sun smiles down, mermaids of all sizes need pure and fresh water to enjoy. The family lido goes without any chlorine since the year 2006 – the water is cleaned microbiologically. Since years, the quality of the water achieves best values. The natural outdoor bath ensures untroubled fun splash.

Splashing for the kids, training rounds for non-swimmers, sportsmanship for experienced swimmers – the Einruhr natural outdoor bath meets any wish. The lawn offers space for recreation in the sun and a kiosk with a terrace is the right place for refreshment or a snack. A summer day can be nowhere more relaxing than in the Einruhr natural outdoor bath!

Einruhr Natural Outdoor Bath

Bathing fun for all in the family, season starts in June, depending on weather conditions. Information under
Phone: +49 (0)2485/912929.

Einruhr Natural Outdoor Bath

Bathing fun for all in the family, season starts in June, depending on weather conditions. Information under +49(0)2485/912929.

Opening hours: 10 a.m. to 7 p.m.

Day tickets for adults 3.00 EUR

Day tickets for children from 3-15 yrs 2.00 EUR

10 % group rate from 10 persons up.

Discount. Free admission for children up to 15 years of age on their birthday.



In the Water and on Land

The Rursee is for everyone. And more.



In the middle of the Eifel National Park, surrounded by unique natural scenery and unspoilt nature: the conditions for a perfect holiday experience can hardly be bettered than those on lake Rursee.

Cycling around the lake over 27 kilometres through the unique landscape, and with the lapping water always at your side. The tour can be extended to 42 kilometres, if one includes the lakes of Obersee and Urtsee. Naturally the trip would be much easier on a Pedelec.

These can be hired by the lake. Small tip: best to call ahead and reserve one. It goes without saying that the lakes can also be explored in a wonderful way on a walk along the shore.

A classic hike takes visitors across along the river Ufer. If you would like something more challenging, you could try the hike along the wooded heights where the water comes appears here and there between the trees and you can enjoy impressive views over the lakes.

And if you want to cut your walk short, you can simply hop onto one of the Rursee boats to the next station on the lake and put your feet up in one of the restaurants and cafés.

The lake resorts of Rurberg, Woffelsbach and Einruhr offer numerous possibilities for a relaxing break!



With so much water around, you can of course go for a dip, too. The Rurberg Rursee Centre attracts lots of people, especially on hot summer days. There you can relax on the large grass area or go for a refreshing swim in the lakeside resort. Families are particularly at home in Einruhr's nature adventure pool with its numerous attractions for children. And if you want to explore lake Rursee from the water, try your hand at stand-up paddling or simply hire a canoe.

It does not stop there: There is so much to discover at lake Rursee, especially for young people. Away from the big cities and the hustle and bustle of everyday life, you are surrounded by nature, fresh air, water, woods, adventure and relaxation, perfect for a trip with friends, youth groups and school classes. You can also sleep like a top in the new NabeDi youth village in the Bay of Woffelsbach. Its wide range of activities makes for a great and memorable stay by the lake.

Contact details: Rursee-Touristik GmbH

in the National Park Gate Rurberg
Seeufer 3 · D-52152 Simmerath
Phone +49 (0) 24 73/93 77 - 0
Fax +49 (0) 24 73/93 77 - 20

Opening times:

daily 10:00 a.m. - 5:00 p.m.
info@rursee.de, www.rursee.de



Every wave a fun wave

Visitors to Schleiden fun pool can expect great water attractions



You can drive directly to the fun pool entrance by car. On foot or by cycle, the pool is only 3 minutes from the town centre.

According to the motto 'Every wave a fun wave' visitors can expect pool water to be a constant 24 ° C. The 46 m giant slide ends in the fun pool...enjoy the splash! You can cool off under the water mushroom of the wide shower or the directed shower. Have fun with the three large floor-based pumps in the 'swing bay' which make waves or put yourself through the flow channel. The massage jets and the whirl rest are not just popular amongst the older swimmers.

In the new toddler pool spray unit, rainbow slide and water play equipment provides for water fun among the small ones. The large beach volley ball field and the street soccer field supplement the leisure time offer. The quiet sunbathing lawn, sun loungers and wicker beach chairs as well as the swimming pool (10 x 25 m) are perfectly designed for water lovers. There is a new terrace for snacks and café.

Contact: Erlebnisbad Schleiden

Im Wiesengrund · 53937 Schleiden
Tel. +49 (0)2445/852898

Openings hours

Monday to Friday: 09.30 - 19.00, Saturdays and Sundays: 09.00 - 19.00, If the weather is bad: Monday to Friday 09.30 - 10.30 and 18.00 - 19.00 · Saturdays, Sundays and public holidays 09.00 - 10.00

Rosenbad Gemünd

Relax and have fun in the spa gardens of Gemünd



The pool is in an idyllic location in the Gemünd spa park surrounded by the Eifel forest. It can be easily reached on foot in 5 minutes from the town centre. A bridge over the Urft, right by the National Park Gate, leads to the Rosenbad pool. There is also plenty of parking within walking distance.

A great 50-metre pool with slides and diving boards and a beautiful oval-shaped paddling pool with a water mushroom where you can swim and play. The spacious lawns offer plenty of space for sunbathing and relaxation for everybody. The pool water is heated.

A beach volleyball court, a basketball hoop (the height can be adjusted to suit the players), a ground trampoline, and several table tennis tables are available for the more energetic visitors. And for children, there are swings and a sandpit near the paddling pool. In our kiosk with a sunny terrace, we serve hot and cold food and drinks.

Contact: Rosenbad Gemünd

footpath over the Urft bridge
at the Gemünd National Park Gate
Opening hours: 9:00 a.m. to 7:00 p.m.

In case of bad weather:

9:00 a.m. - 11:00 a.m. and 5:00 p.m. - 7:00 p.m.
Phone +49 (0) 2444/3143
www.rosenbad-gemuend.de

Rosenbad · Gemünd



Vogelsang swimming pool

Immerse yourself in history and unique swimming pleasure



Located high above Lake Urfsee, with an indescribable panoramic view across the fantastic landscape of the „Eifel Amazonas“, the pool with a size of 25 x 10 m is hidden beneath thick walls of large rocks and a large window front. The swimming bath with an exciting history due to National Socialism, can be referred to as „particularly sportive variant“ of its kind, because it was constructed in the nineteen thirties on the premises of the „Nazi Ordensburg“ Vogelsang as part of a complex sports facility. It is suited for contests and excellently equipped to enable swimming certificates of all kinds up to professional education. In addition, its uniqueness is captivating, lets the functionality of the arrangement step behind and invites for enjoyable swimming.

Schwimm- und Sportverein Vogelsang

Vogelsang 44 · D-53937 Schleiden
Phone +49 (0)2444/914194
info@schwimmbad-vogelsang.de
www.schwimmbad-vogelsang.de

Opening times:

MO to FR 7:00 a.m. – 8:00 a.m. early MO, DI,
DO: 04:00 p.m.-09:00 p.m., MI: 04:00 p.m.-06:00 p.m.,
FR: 04:00 p.m.-07:00 p.m. (from Sept.-April),
FR: 04:00 p.m.-09:00 p.m. (from May-August),
SA: 11:00 a.m.- 05:00 p.m., SO: 09:00 a.m.-05:00 p.m.,
holidays*: 11:00 a.m.-05:00 p.m. Entrance fees: day ticket (from the age of 16) 3.50 EUR, day ticket children (age 6-15) 2.50 EUR, children to the age of 5 entrance free (accompanied by an adult with valid entrance ticket).

The family fun pool

Swimming pool Eifelbad with giant slide



The Eifelbad has been one of the special attractions in Bad Münstereifel for many years. Visitors can expect a wide range of offers for the whole family or for sporting activities - and all at low prices. The Eifelbad offers almost 700 m2 of water surface with its numerous attractions and pleasant water temperatures, making it the perfect setting for a short daily holiday. Whether fun for the whole family or health-conscious exercise up to high-performance sports - everything is possible. A look at the varied range of courses for children and adults is just as worthwhile as a visit to the giant slide, which guarantees a 122-metre-long sliding pleasure all year round.

The recreational area with its 6,000 sqm sunbathing lawn and beach volleyball field offers enough space for a pleasant day at the Eifelbad.

Prices and opening hours

are always up-to-date on the website www.bad-muenstereifel.de. The current Corona hygiene rules can also be found on the website www.bad-muenstereifel.de

eifelbad
Das Familien-Spaßbad!

Contact: Eifelbad

Dr.-Greve-Straße 16 · 53902 Bad Münstereifel
Phone 0 22 53/54 24 50
info@bad-muenstereifel.de
www.bad-muenstereifel.de



Eifel-Therme-Zikkurat

Experience and enjoy a unique bathing and sauna oasis that extends over around 13,000 square metres!



Immerse yourself in a world of water and enjoy all kinds of different experiences in the bathing area. Sports pools, adventure pools with a jet stream, four waterfalls, spa bench, climbing ropes and a giant slide offer entertaining breaks from everyday life. There is never a dull moment in the 650-square-metre water area.

If you love being active, you're in the right place with all the great courses on offer in the bathing area. Aqua-Powerfit promotes the cardiovascular system, Aqua Gymnastics supports physical fitness and Aqua Jogging is recommended for targeted back training. Beginners and advanced swimmers are welcome in lessons at their corresponding level.

The sauna garden is set in a picturesque park. You can perspire to your heart's content in log cabin sauna „Piha“, the quaint earth sauna „Maa“, the „Takka“ sauna fuelled with real firewood and the Finnish polar pine sauna „Meri“. Refresh yourself in the plunge pools and shower areas! There are rest areas and a fireplace lounge for more tranquil moments. The rose quartz sauna „Jalo“ is perfect for those seeking spiritual and mental calm.

In the „sanarium“, the temperature rises to a pleasant 55 degrees. At 45 degrees, the aromatic steam bath „Caldarium“ is constantly filled with swirls of mist.



After a session in the sauna, our bistro „Pikku Loma“ with its adjoining fireplace lounge is ideal for relaxing in with some snacks and drinks, and our restaurant „Ravintola“ on the first floor offers a comprehensive menu.

Professional massages help to relieve tension. Basic, well-being and full body massages as well as hand and foot reflexology massages promote your personal wellness. Cooling, sporty, warming or sensual essential oils release pleasing aromas and caressingly nourish the skin. The Hot Stone technique guarantees additional, targeted heat and supports the effects of the massage.



Eifel-Therme-Zikkurat

An der Zikkurat 2
53894 Mechernich
Phone +49 (0) 2256/95 79 - 0
Fax +49 (0) 2256/95 79 - 19
info@eifel-therme-zikkurat.de
www.eifeltherme.de



Therme Euskirchen

Pure relaxation. Right on your doorstep



Close your eyes and let yourself drift away beside the sparkling blue lagoon of the Palmenparadies, lined with colourful orchids. Dream yourself into paradise. Dive into the crystal clear 33°C warm water of the large lagoon and relax. On warm sunny days, the large overhead roof opens up to reveal a breath-taking panoramic view. Soak in the unique Mediterranean atmosphere under the open skies. Whether you are sipping a cocktail at the Paradise Beach bar, relaxing in the Bambus Lounge or unwinding in our sauna world, the spa has so much to offer both in the summer and winter.

Welcome to paradise.

Get away from the hustle and bustle and enjoy some time-out. At the Palmenparadies (admission from 16 years old, children 3 or under enter free of charge, no age limits on Family Saturday) you enter a tropical setting where you can lie down on one of the many relax loungers under a canopy of 500 palm trees from the South Pacific; here you can recharge your batteries and health or simply be pampered by the massaging jets of the loungers. The sweet scents and gentle melodies whisk you to a far-off land of relaxation whether you take a dip in the large lagoon or enjoy a refreshing cocktail at the pool bar. Enter our stylish sauna world that welcomes you in with its openness and unique atmosphere. In the Vitaltherme & Sauna (admission from 16 years old, no bathing suits), you will experience intensive moments



of well-being. Ten saunas with different themes and the steam bath will pamper your senses with their aromatic scents and special infusion treatments. Whether you choose a touch of magic from the ancient temples, a trip to the Orient, a mystical journey, greetings from the Far East, powerful natural stones or the traditional hot furnace – you will be embarking on a truly special journey of relaxation. After you have experienced the soothing powers of the sweat baths, immerse yourself in the cool, refreshing Calla Lily shower, in the crystal-clear pool or plunge pool.

Over 60 Beauty treatments and infusion experiences bring harmony to body mind and soul. 365 days of the year. Relax.



Thermen & Badewelt Euskirchen GmbH

Thermenallee 1 · (Stresemannstraße 999)

D-53879 Euskirchen

Phone +49(0)2251/1485-0

info@badewelt-euskirchen.de

Tickets can be booked online via the website
www.badewelt-euskirchen.de.



monte mare Rheinbach

Relaxation straight
from 1001 Nights



At monte mare in Rheinbach, in addition to a large leisure and adventure pool, guests can experience a splendid and comfortably arranged sauna area with a varied wellness programme.

The leisure pool is not only a paradise for water-loving youngsters. A large wave pool, as well as slides, whirlpools and a sports pool mean the monte mare can offer just the right fun factor for the whole family. A real highlight is the unique indoor diving centre, offering scuba diving or beginner courses. On the other hand, if you are looking for peace and relaxation, you have come to the right place in the sauna paradise with its oriental theme. Various saunas as well as herbal, steam and mud baths help you to perspire in a relaxing and healthy way.

There are relaxing massages, exotic steam bath ceremonies and other exclusive arrangements. All these different wellness and beauty offers complete your time off from everyday life to perfection.

monte mare Rheinbach

Münstereifeler Straße 69 · 53359 Rheinbach
rheinbach@monte-mare.de
Phone +49 (0)2226/9030-0

Opening times of the Saunaparadies:

Monday to Thursday from 9.00 am–11.00 pm
Friday and Saturday 9.00 am to midnight
Sunday and public holidays 9.00 am–9.00 pm

monte mare Kreuzau

Vacation without
a suitcase



Das **monte mare Kreuzau** invites you to spend your holiday on your doorstep with a wide range of leisure and relaxation activities. The large leisure pool offers bathing fun for the whole family. No matter whether it's a toddlers' pool, wave pool, tube slide or 25-metre pool: under the impressive glass domes, guests splash and swim as if they were in the open air. The large pirate ship for climbing and sliding is also impressive. Numerous water cannons and spray nozzles ensure unlimited fun for little pirates. If you like it quieter and just want to spend a few relaxing hours in a cosy atmosphere, the textile wellness area or the cosy sauna landscape is the perfect place for you. Various theme saunas, cosy relaxation rooms and a rustic sauna garden invite you to do nothing.

Selected treatments from different countries and cultures pamper the guests. All wellness treatments can also be booked without sauna admission.

monte mare Kreuzau

Windener Weg 7 · 52372 Kreuzau,
kreuzau@monte-mare.de
Phone +49 (0)2422/9426-0

Opening Times Saunaparadies:

Monday to Thursday from
10.00 a.m. – 23.00 p.m.
Friday and Saturday 10.00 a.m. – midnight
Sunday 10.00 a.m. – 21.00 p.m.

Indoor pool Stolberg

Let your mind wander in
barrier-free sports center



The indoor swimming pool in Stolberg is worth a visit: In addition to the 400 sqm large and 28 °C warm swimming pool, the non-swimmer area offers a water temperature of 32 °C, especially for the younger guests, and with 128 sqm plenty of room to splash around. Adults can relax in the pool while the children romp around in the warmer water. The special highlight is the fun pool on Friday. Water toys such as balls, air mattresses, water animals etc. are very welcome. Running mats and slides are provided by the indoor pool. A paradise for little water rats! So that everyone can enjoy the fun of bathing without any problems, the entrances, changing rooms, toilets and the entrance to the pool are barrier-free.

Contact us: Indoor swimming pool - sports centre Glashütter Weiher

Schafberg 1 · 52223 Stolberg

Phone +49 (0)2402 91027

www.stolberg.de

Opening hours: Mon-Fri 6.00 a.m. - 8.00 a.m.,
Tues 1:00 p.m. - 5:00 p.m., Wed + Thu 1:00 p.m.
- 10:00 p.m., Fri 1:00 p.m. - 2:00 p.m. (senior
citi-zens), 2:00 p.m. - 3:00 p.m. (women's hour),
3:00 p.m. - 7:00 p.m. (fun bath in the family
pool) Sat. 8:00 a.m. - 6:00 p.m., Sun. 8:00 a.m.
- 2:00 p.m. During the holidays additionally:
Mon - Fri. 8:00 a.m. - 1:00 p.m. entrance fees:
Adults: 4:00 Euros, school children/teenagers/
children from 6 years: 2.50 Euros, accompany-
ing persons free admission

Düren bathing lake

Fun and recreation for
the whole family!



„Fancy a swim and more...” - can be found at the beautifully situated Düren bathing lake. With its long sandy beach and the best water quality, the lake promises wonderful relaxation for the whole family. Enjoy your little beach holiday actively on a SUP, in a kayak or comfortably on a pedal boat. Fun and action are also promised by the diving tower or jumping cushions, the water running balls or the beach volleyball courts, and there is also plenty to discover for the very young guests in the Luna water park. Wakeboarders and water-ski fans will get their money's worth at the new large „DOCK5” facility. More information at www.dock5.eu Musical highlights will not be missing at the lake in 2022: Reggaeton Am See will start the season on 28 May and all fans are already looking forward to the Nibirii Festival from 17-20 August.

Contact:

Dürener Service Betrieb,

Tel. +49(0)2421/94340

www.dn-sb.de, Badesee@dn-sb.de,

Dürener bathing lake,

Tel. +49(0)2421-639 11

Water Ski Düren, „Dock5”,

Tel. +49(0)1525 3770444, dock5.eu

Address Düren bathing lake:

Am Badesee 1, 52351 Düren-Gürzenich

Opening hours:

15. May-15. Sept., 9 a.m.-9 p.m. at moderate
weather daily updated.

Hotline +49(0)241/63911 or in the Internet.



Water fun in the region

Monschau and Simmerath



For swimming enthusiasts there is the charming yet functional 25-meter pool with four lanes, a springboard and three-meter diving tower. There is a beginner's swimming pool for those to take their first strokes and where non-swimmers can splash. A children's wading pool with a small slide promises the youngest swimmers will have great time. Saturday children's playing hour. Barrier-free!

VENNBAD

Wilhelm-Jansen-Straße 1
52156 Monschau · Tel. +49 (0)2472 - 8024930
www.monschau.de

Close on monday

Tuesday

11.00 bis 11.45 Aqua Fit
15.00 bis 18.30 Family swim

Wednesday

15.00 bis 21.00 Family swim
18.30 bis 19.15 Aqua Fit

Thursday

06.30 bis 08.00 early swim
15.00 bis 16.00 Adult swimming
16.00 bis 21.00 Family swim
18.30 bis 19.15 Aqua Fit

Friday

15.00 bis 21.00 Family swim
18.30 bis 19.15 Aqua Fit

Saturday

13.00 bis 18.00 Family swim
14.00 bis 17.00 Waterfun

Sunday

09.00 bis 18.00 Family swim



Go swimming again! Newly opened in 2012, SimmBad allows you to take relaxed laps while the kids frolic in the heated water. Amongst the three different pools everyone is bound to find their favorite spot.

And on weekends the lifeguards fill the competitive pool with all kinds of water toys. Simply come and enjoy bathing without any time limits. Handicap accessible.

SimmBad

Walter-Bachmann-Str. 38
52152 Simmerath · Tel. +49 (0)2473-1295
www.simmerath.de

Close on monday

Tuesday

06.30 bis 08.00 early swim
16.00 bis 21.00 Family swim

Wednesday

06.30 bis 08.00 early swim
16.00 bis 20.00 Family swim

Thursday

06.30 bis 08.00 early swim
08.00 bis 11.30 Family swim
16.00 bis 21.00 Family swim

Friday

06.30 bis 08.00 early swim
15.00 bis 21.00 Family swim

Saturday

09.00 bis 10.00 Women's / girls' bath
10.00 bis 13.00 Family / play pool
13.00 bis 14.30 Family / play pool

Sunday

08.30 bis 12.00 Family swim
15.30 bis 18.30 Family / play pool



EifelLoops & EifelTrails

echt.gut.wandern!
The new hiking world North Eifel



The beautiful and varied landscape of the Northern Eifel with its hills, wooded areas alternating with meadows and open spaces, rippling brook valleys and the flat landscape of the Börde landscape (fertile plain) makes the heart of every hiking enthusiast beat faster.

Whether it's a leisurely pleasure hike or a demanding route - the new Eifel Loops and Eifel Trails offer the right hiking experience for every requirement.

The Eifel Trails

Embark on a unique journey of discovery along the specially designed and themed (quality) circular hiking trails in the northern Eifel, the Eifel Trails. Whether „On the Clothmaker's Trail“, „In the footsteps of the robber barons“ or „Through the Toscana of the Eifel“. On a total of 18 Eifel Trails there is a lot to discover for young and old.

Die EifelLoops

A total of 94 Eifel loops, the local circular hiking trails, offer a wide range of opportunities to explore the northern Eifel in hiking boots. Before you start hiking, you are spoiled for choice. The tours are of varying difficulty and therefore suitable for all tastes. Possible are walks, shorter hikes, but also demanding hikes with a few metres of altitude that have to be overcome.



Completely and systematically marked

The 94 Eifel Loops and 18 Eifel Trails are designed as circular hiking trails, so that your hike is easy to plan. In many cases there is a railway connection and a cycling and hiking station in the North Eifel nearby. All tours are equipped for you with markers, which are placed „on sight“ in the terrain. Directional arrows on the markings additionally specify the exact route. On the Eifel Loops and Eifel Trails you can therefore almost impossible lose your way!

Let you be inspired:

www.eifelschleifen.de

www.eifelpuren.de



Eifel Schleifen
& Spuren

Contact and booking office:

Nordeifel Tourismus GmbH

Bahnhofstraße 13

53925 Kall

Phone + 49 (0) 2441/99 457 - 0

Fax + 49 (0) 2441/99 457 - 29

[info\(at\)nordeifel-tourismus.de](mailto:info(at)nordeifel-tourismus.de)

www.nordeifel-tourismus.de



EUROPÄISCHE UNION
Investition in unsere Zukunft
Europäischer Fonds
für regionale Entwicklung



Sustainable Region of Discovery

Nordeifel. Close by but far enough away



Not far from the big cities in the Rhineland, you can immerse yourself in another world. In Nordeifel, you are surrounded by unspoilt nature, cultural treasures, an often sparkling starry sky and the purest air in Germany. Because the region is also thinking about the future, it earns the title of "sustainable".

Director for a day or more

Write the script for your day trip or short break. Explore the wilderness of tomorrow along narrow paths in the Eifel National Park or relax under palm trees on a sunny day. It takes a brave person to go tandem skydiving... or maybe you are the more leisurely type who prefers to go shopping in pretty surroundings in Bad Münstereifel.

Go on a journey through time

A rich past filled with stories about the Romans, the Middle Ages and the era of industrialisation in this small area. It may be hard to believe, but we can travel through time here. In addition to well-known places such as the Steinfeld Monastery, Satzvey Castle, the historic castle town of Kronenburg or Vogelsang IP, you will be pleasantly surprised by the unknown treasures and cultural gems we have.

Just do it

In the Eifel National Park, rangers can tell you amazing stories, and hikers know that Nordeifel has even more to offer thanks to the brand-new



trails „EifelSchleifen & EifelSpuren“ or the classics such as Eifelsteig, AhrSteig and Römerkarnal-Wanderweg.

Pedal-power instead of horsepower

Cycling in Nordeifel is not as strenuous as you may think. If you like to take things easy, you can toodle along one of our river bike trails or go along the moat castle route. The more ambitious cyclists among you may wish to master the Eifel-Höhen route or the MTB network of paths: „Freifahrt Eifel“.

Fun for the family

Pack up your parents and come to Nordeifel! And even better, bring some friend, too, because there is so much to discover here - in all seasons and all weather.



Holiday Advice & Booking Office Nordeifel Tourismus GmbH

Bahnhofstraße 13, 53925 Kall
Phone +49 (0) 2441. 99457-0
info@nordeifel-tourismus.de
www.nordeifel-tourismus.de
www.facebook.com/NordeifelTourismus

The natural reserve Schlangenbergr

Unique calamine flora -
a botanical rarity



The natural reserve Schlangenbergr, (snake mountain), NSG is near the village of Breinigerberg in the region of Stolberg. It is home to a botanical rarity that is found in just a few places around the world. It is the calamine flora - in particular the yellow calamine violet - which makes this NSG so important and has allowed it to transform into a landscape jewel. This plant community grows in the south-western area of the NSG due to the large deposits of heavy metals, in particular zinc ($ZnCO_3$), a secondary ore known as calamine.

The consequences of the ore mining by the Celts and Romans up to the end of the 19th century can be seen even today in the grounds of the natural reserve.

Interested visitors can find all the information about the flora, fauna, geology, mineralogy, ore mining and water extraction in the NSG Schlangenbergr at the Information Centre, which is located in the former Breinigerberg Secondary School, Breinigerberg no. 95. The centre has been run on a volunteer basis since 1991 by the Breinig Eifel and local history association.

The Information Centre is open from March to November, on Sundays from 2:00 p.m. to 5:00 p.m. It is closed from December to February, during the school holidays and public holidays. Admission is free. For group visits outside of these opening times please refer to website of the Breinig Eifel and local history association - www.Eifelverein.de/breinig

Rursee balloon trip

Discover the world from above



A balloon flight gives you a different perspective on the tranquillity and beauty of the Eifel National Park - and makes you feel quite calm. At an altitude of about 500 to 1,000 metres, you can still see a lot on the ground: for example, the ships on Lake Rursee, the trees in the woods, rabbits in the fields or the hustle and bustle in the villages. A balloon flight is a journey into another world at any time of year. Between spring and autumn, in good weather conditions, you can only fly in the morning or evening because of the thermals. In winter, on the other hand, the balloons are launched during the day when the weather is good, so that it is also possible to fly over snow-covered landscapes. After landing, the traditional baptism of the balloonist takes place and the experience can be rounded off with a glass of champagne.

Of course, a balloon ride also makes a great gift. Good to know: The ticket money is secured by Rursee-Touristik GmbH and will only be paid to the airline after the flight has been completed.



Contact: Rursee-Touristik GmbH

Seeufer 3 · 52152 Simmerath

Phone +49 (0) 2473-937711, www.rursee.de
ballonfaballonfahrten@rursee.de



Hiking & vital tours

Perfectly signposted network of trails in
Schleiden and in the Kneipp health resort of Gemünd



Circular walks and themed trails in the city of Schleiden are teeming with nature just waiting to be discovered on foot. As with the premium Eifelsteig trail, which crosses the city and its surrounding area in two stages, the entire network of paths is completely signposted providing signs for both directions and destinations. Each signpost site has a name, which is referenced in the hiking map. This allows walkers to orient themselves perfectly. Each circular walk and theme trail has its own trail emblem (tour badge), which, as with the directional system for the cycle routes, is attached to the bottom of the signposts that provide directions.

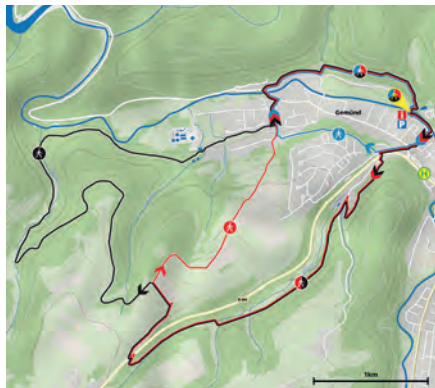
There is a single marker for all hiking trails with two hikers showing the way between the signposts. This signposting system makes it possible to put together individual tours and not just rely on the signposted circular routes.



One of the hiking and health tourism offers in the Kneipp health resort Gemünd are three signposted vitality tours, which complement the pioneering hiking guidance system in the town of Schleiden.

Tour 1 easy circuit (blue)

Length: 3.5 km, Difficulty: Easy, Walking time: Approximately 1 hour, Climb: 51 m



Tour 2 moderate circuit (red)

Length: 7.8 km, Difficulty: Moderate, Walking time: Approximately 2 hours Climb: 166 m

Tour 3 difficult circuit (black)

Length: 11.4 km, Difficulty: Hard, Walking time: Approximately 3 hours, Climb: 179 m

All routes start at the National Park Tor Gemünd, the routes are colourcoded on the signposts and marked along the circuit. At the beginning the tours run in parallel; they then split into the three different levels of difficulty. All the paths are measured based according to scientific sports methods and under climatically burdened aspects. The trails can be used for Nordic Walking, as well as for walking, hiking or jogging. The trails vary in length and have different climatic factors. They offer ideal conditions for beginners and experienced hikers.

Info: Tourist Information in the

National Park Tor Gemünd Kurhausstraße 6
53937 Schleiden, Phone +49 (0) 2444/2011
www.natuerlich-eifel.de

Our tip:

You can obtain the brochure with all 18 circular tour tips free of charge at the Nationalpark-Tor in Gemünd. You can download the GPS data for all tours from the Wandertourenplaner at www.natuerlich-eifel.de



Wilderness-Trail

Four stages - 85 kilometres:
A hike in the Eifel National Park



© G. Priske

The individual stages present the entire scenic diversity of the Eifel National Park. Rushing brooks, fragrant flowers, deep forests and wide panoramic views - that's how diverse and inspiring tomorrow's wilderness is.

The route runs from the south of the large protected area near Monschau-Höfen to the north near Hürtgenwald-Zerkall.

The first stage from Höfen to Einruhr is not only the most challenging and longest route, but also the one with the most metres in altitude. Particularly attractive are the natural forest cell „Im Brand“, the beginnings of the vast Dreiborn plateau, the adventurous high-level trail near Hirschrott and the idyllic Erkensruhr valley.

The second stage of the tour leads over narrow paths along the Obersee with wonderful views over the Dreiborn plateau and the lake landscape from Einruhr to Vogelsang and on to Gemünd.

On the third stage the Kermeter is wandered through. This part between Gemünd and Heimbach was the decisive reason for the designation of the National Park. Between the majestic, centuries-old beech trees you can feel the perfection and the everlastingness of nature.



© P. Stollenwerk

The last and shortest stage of the wilderness trail runs from Heimbach to Zerkall. The picturesque Schleibachtal valley is just as fascinating as the diverse mixed forest with its high stock of gnarled oaks.

You can then return to the starting point with the Rurtal-Bahn Railway and the Trail-Express, which brings the wilderness trail hikers back to Monschau-Höfen on advance booking.



The symbol of the wild cat accompanies the hikers on their way.

Contact:

Monschauer Land Touristik e.V.

Seeufer 3 · 52152 Simmerath

Phone +49 (0) 2473/937717

info@wildnis-trail.de

www.wildnis-trail.de

www.monschauerland.de

Our tip: The Wellness Package for the Wilderness Trail includes

4 hiking days and 3 nights with breakfast at certified National Park hosts incl. National Park hiking map, hiking guide (book), hiking pass, Wilderness Trail pin and certificate from 199 Euros per person. Also available as a gift voucher. All information on booking at www.wildnis-trail.de



Endless vastness and peace

Discover the Börde landscape (fertile plain) of the Rur-Eifel with its panoramas and paths



The fertile plain of the Rur-Eifel, called Börde landscape, is much more than just a stopover on the way to the Eifel National Park or the surrounding urban centres. It is a treasure in itself. Being on the road in it means feeling its gentleness and vastness. Only a few compact villages are scattered in the undulating, open landscape.

Börde views

Where the Eifel merges into the fertile Lower Rhine bay, there are doubtlessly no far-reaching views. Six Börde views make this panorama a conscious experience. The viewpoints below will explain to you exactly what lies in the distance, which villages, churches or industrial buildings help to shape the landscape.

On a clear day, discover the Siebengebirge, Cologne Cathedral or the Bergisches Land on the horizon. But above all: enjoy the feeling of space and tranquillity that the Börde gives its viewers as a matter of course.

Village walks

Fancy exploring new territory? Then we recommend a visit to the Börde villages in the Rur-Eifel region. It is very worthwhile to discover their historical, architectural, cultural and natural beauty. Above all, however, the noticeable charm of rural peace and village integrity. We have signposted eight village tours with walking times usually under an hour. You will find



the relevant information on the website indicated for download or on the information boards at the respective starting points.

Hiking tours

Hiking offers through an open cultural landscape complement the paths that lead through deep gorges, dense forests and emerging wilderness in the other part of the Rur-Eifel. On the eastern edge of the Eifel, views widen and spectacular perspectives open up.

Cycle tours

Towards the east, the Eifel plateau with deep valleys and large areas of forest is replaced by the plain of the Rhine and the Börde. Here, things are a little more gentle for cyclists. We have developed three tours for you between Mechernich and the villages of the Rur-Eifel region. Two offers combine the charm of the Rur valley with the far-reaching views of the Börde, a third tour takes visitors along our moated castles and on the trail of the Romans in the Zülpicher Land region.

Contact:

Rureifel-Tourismus e.V.

An der Laag 4
52396 Heimbach
Phone +49 (0) 2446/805790
info@rureifel-tourismus.de
www.rureifel-tourismus.de
www.eifelboerde.de



Red Sandstone Route

40 km between the Rur and the rocky cliffs



The red sandstone route starts at the Kreuzau train station, leaves the local area and passes through the Ruraue up to Üdingen where the trail gradually climbs upwards. On the Mause, hikers can pause to take in the impressive panorama of the Obermaubach reservoir. The route continues to wind its way on mainly natural paths over the Eugeniestein and above the Rather Felsen (rocky cliff) until it reaches Hindenburg Gate and the Christinenley group of rocks. This is where the motto of the Eifelstieg trail comes to life: „Where rock and water accompany you“. At the end of your hike, you will reach the old town of Nideggen.

From the market square in Nideggen, the red sandstone route initially runs below the castle, then it continues along the Effels cliffs and through the Kühlenbusch to Abenden. Between Abenden and Hausen, it skirts along the edge of the National Park Eifel for the first time and in the last 5 kilometres until Heimbach, hikers only pass Hausener Busch. This is however reached in no time and the smallest town in North Rhine-Westphalia boasts some fantastic dining facilities.

From Heimbach, the route continues to climb through the National Park up to the „Schwarzen Kreuz“ (black cross) on the Kermeter and the „Wilden Weg“, it then descends from there to the Urft dam, and finally meets up with the Eifelstieg trail after just over 40 km.



Photos: © Michael Sanger

Between Kreuzau and Heimbach the route is „accompanied“ by the Rurtal railway. This is the perfect opportunity for hikers to go railway hiking: You can start and end your individual hike at one of 11 stops or break up the tour with a short train ride to get to your next stop on the red sandstone route.

Book your hiking tour now on the red sandstone route

- 2 nights including breakfast with climate-friendly hosts
- Eifel Guest Tickets for free use of the public transport services
- 2 packed lunches
- Rursee boat trip - from
- 145 EUR per person, in a double room



Contact: Rureifel-Tourismus e.V.

An der Laag 4
52396 Heimbach
Phone +49 (0) 2446/805790
info@rureifel-tourismus.de
www.rureifel-tourismus.de



Historial Literary Trail Eifel

On the trail of history in the Hürtgenwald -
with or without accompaniment



The area around Huertgen Forest has opened up to reveal its dramatic military past: bunkers, tank traps, traces of munitions, cemeteries for the fallen. The Konejung Foundation: Culture has worked through this part of our history and brought it back to life. The Kall Trail, the Heinrich-Böll Trail and the Hemingway Trail join four other themed circuits to create the „Historical Literary Trail“: a multi media journey over 40 kilometres long.

Historic film recordings and photos, cards comments and interviews give additional information on the fights, their background and literary description.

Time Travel Eifel project

Applying historical knowledge for the purposes of tourism. There are personal history guides for visitors (who can be booked) who can provide facts and background knowledge rather than just keywords, so they are able to clarify myths when you go on tour with them. Where you decide to go with them, which topics you want to focus on, and what media you use is decided on a completely individual basis. Every guide provides his/her knowledge with a personal approach.

This makes the experience rich in its diversity as, for example, history is seen in motion or historical clues are linked with impressive natural surroundings.



Each of the guides connects her/his knowledge with a personal approach. The result is a multi-faceted offer, at which e.g. history meets movement or historical investigation is connected with impressive nature experiences. Look for something that meets your preferences and interests. Contact the Rureifel or directly one of the guides, in order to discuss your wishes.



Contact:

Rureifel-Tourismus e.V.

An der Laag 4 · 52396 Heimbach
Phone +49 (0) 2446/805790
info@rureifel-tourismus.de
www.rureifel-tourismus.de

The flyer folder

... on the „Historic-literary hiking trail“ is available in German and English for a price of 3.00 Euros in the Tourist Information Office. On request it will be sent by post for 5.50 Euros



Hiking tours around Nettersheim

We offer hiking experiences for body, mind and soul



Experience the varied low mountain landscape with all its treasures on the hiking trails around our **beautiful Eifel community of Nettersheim**. Here you can follow in the footsteps of the Romans in the Archaeological Landscape Park, experience 20 exciting stations on the Dandelion Experience Trail, listen to the explanations of an insider in our local history walks and much more.

The lush flora and fauna in the changing seasons, springs, streams and forests offer tranquility and variety at the same time. Step by step, get away from the hustle and bustle of everyday life. The Eifelsteig Hiking Trail, the Roman Canal Trail, the Way of St. James, the Eifel Spring Trail and the Eifel Herb Trail as well as other themed trails lead through our community.

We offer **hiking experiences for body, mind and soul**. Individual guided tours can also be booked.

Let yourself be inspired by the team of the Eifel Nature Centre in Nettersheim

Currently:

Tourist information in the „House of Fossils“,
Bahnhofstraße 50, 53947 Nettersheim
Telephone +49 (0)2486/1246
naturzentrum@nettersheim.de
www.naturzentrum-eifel.de

Opening hours:

Monday to Sunday 10:00 am – 4:00 pm

From the Neanderthals, from Celts and Romans

The Roman canal footpath and „Agrippastraße“



Photo: Stadt Mechernich/Ralph Sondermann

Where mammoths and reindeer once sought refuge, where the water flowed through the air, there, at the foot of the Eifel is Mechernich, a modern town with a fascinating history, on the outskirts of the Eifel National Park.

The Neanderthals once lived in the Kakus Caves in Dreimühlen. The caves and winding paths, the legends and stories about the giant Kakus make for a very special experience - for young and old alike. Tours, events and treats in the café are also included in the programme.

In the „Roman road experience room“ the Roman trunk road from Cologne to Marseille is brought to life. Explore the „Agrippastrasse“ in Mechernich on a designated cycle path. The Romans also left visible traces in the construction of a water supply line to Cologne. There are numerous relics waiting to be discovered in Mechernich on the Roman canal trail.

Contact details:

Stadt Mechernich
Bergstr. 1
53894 Mechernich
Phone +49 (0) 2443/49-4322 oder 4320
Fax +49 (0)2443/49-5322
touristik@mechernich.de
www.mechernich-eifel.de



Adventure community Kreuzau

Visit our popular recreation destinations



The municipality of Kreuzau is nestled in the idyllic Rur meadow landscape on the northern edge of the Eifel nature experience region, where the Eifel stretches out to the north, plunges into the Düren – Jülich plain and both natural areas connect and intertwine with each other.

The **hilly low mountain range landscape** of the Eifel that starts here, crossing over to the flat plains, the vast areas of forest, meadow valleys and the starkly carved Rurtal valley along with the Obermaubach reservoir offer a unique landscape. Because of the diversity and the variety of this exciting and ecologically precious natural landscape, the municipality of Kreuzau is regarded as popular recreation destination.

The municipality of Kreuzau is a very active town, with a good infrastructure, that is full of life in all aspects, from just living and working there to the active and peaceful opportunities for relaxation.

From among the various leisure activities on offer, the walks and hikes in particular promise rewarding experiences in nature and relaxation on every route. The Rurtal railway line Düren – Heimbach offers the perfect framework for railway walks, and can also be used as a link to the Eifel National Park or to shorten several hiking routes or be used for the return journey.



Visit the central site of Kreuzau as a starting point for the main trails of the Eifelverein (4) Josef-Schramm-Weg and (5) Willi-brordusweg, as well as the Eifelsteig partner trail, the „Buntsandstein-Route“.

On many great hiking trails, such as for example the theme trails „Water experience trail“ (62), „Panorama trail west“ (72), the „Rocky passage“ (07), as well as on local loop trails, you will encounter numerous attractions such as historic monuments, castles and mill ponds. The Eifel views „Hemgenberg“-Winden, „Schafsbenden“-Bogheim and „Waldkapelle Obermaubach“ as well as the viewpoint „Engelsblick“ can all be reach on several signposted hiking routes. They offer impressive views stretching far beyond the municipal borders and compel you to stop and take a break. The Rur-Ufer bicycle trail runs in the valley alongside the Rurtal railway.

Obermaubach is a recreational and tourist destination with its magical setting by a drinking water reservoir, the highest fish pass in North Rhine-Westphalia and a water bird breeding area. Because of its idyllic location and the varied hiking area around the reservoir and in the high Mausaeuler Wald und areas, Obermaubach represents a highly frequented and popular day trip destination.

Convivial and hospitable hosts will tempt you with specialties and culinary delights from the



Eifel region. Quiet and scenically located properties are available every season for accommodation during your stay.

Other activities include bicycle touring, mountain biking, paragliding, canoeing, horse riding, fishing and climbing the nearby rocks of the Rurtal valley. Families with children can choose from a variety of boat trips, forest playgrounds and the forest and water nature trails. The monte-mare sports centre and swimming pool in the central town of Kreuzau rounds off the activities on offer.

A very special highlight for those in search of rest and relaxation is the Drover Heide nature reserve (European bird sanctuary), which is of national importance as a habitat for rare and endangered plants and animals. The beauty of this landscape can be seen whilst walking on the designated paths that are 2.2 km (barrier-free way with viewpoint) to 14.1 km long.

In the midst of the Drover Heide, an archaeological hiking trail, the „Drover mountain tunnel trail“, which starts at the source „Helje Pötz“, guides you to traces of a technical masterpiece of Roman architectural engineering. Guided hikes in the municipal area are offered each season. Numerous events on nature and culture are held as well as local and village festivals. Find out more on our website:

www.kreuzau.de

You are always welcome in the town of Kreuzau!

Contact details:

Municipality of Kreuzau

Bahnhofstraße 7
52372 Kreuzau
Phone +49 (0) 2422/507348
www.kreuzau.de

Rureifel-Tourismus e.V.

An der Laag 4
52396 Heimbach
Phone +49 (0) 2446/80579-0
www.rureifel-tourismus.de

Daffodil flower in the Oleftal

The yellow carpets of flowers in the North Eifel Nature Park



A unique scenario is created in the idyllic meadow valleys of the upper Olef Valley at the end of March until the beginning of May. Millions of the wild „yellow daffodil“ stretch their heads towards the sun and turn the meadows in the area of the Nature Park North Eifel into yellow carpets of flowers. The heralds of spring are difficult to distinguish from their garden sisters, the Easter daffodils; wild daffodils are only a bit smaller.

Along the sign-posted circular hiking routes you can explore the floral magic on your own initiative or with well-informed guides. Starting point always is the parking place „Hollerather Knie“ near Hellenthal-Hollerath at the B265.

Every two years the municipality in cooperation with the Nature Park North Eifel and the NRW foundation takes the blooming of the daffodil as an occasion to celebrate the daffodil festival.

Tourist-Information and National Park Information

Office Hellenthal
Rathausstraße 2 · 53940 Hellenthal
Phone +49 (0) 2482/85 115
Fax +49 (0) 2482/85 114
tourismus@hellenthal.de
www.hellenthal.de

Guided tours to the daffodil meadows

The dates of the guided walks can be found at www.hellenthal.de. The 40th Daffodil Festival will take place on 24.04.2022 at the „Hollerather Knie“ car park.



Hiking in East Belgium

Easier than ever - sporty or comfortable -
Discover East Belgium



© Thomas Linkel /Interreg_EFRE



© Dominik Ketz /ostbelgien.eu

The East Belgian network of hiking trails covers 1,370 kilometres and, at the interface between the Eifel and Ardenes, offers a landscape that makes the hiker's heart beat faster: Hills and valleys, forests, enchanting lakes and river landscapes, and in the middle of it all, the High Fens, one of the last high moorland plains in Europe.

The network of paths in East Belgium has been newly signposted. Here the orientation works on the basis of junctions. Hiking by numbers makes route planning easier and offers the hiker virtually unlimited possibilities.

In addition to simplified orientation, the new signposting system offers another decisive advantage. It allows for individual planning that meets one's own needs in terms of length and degree of difficulty, route or circular walk.

The digital route planner „Go East Belgium“, which can be used under go.ost-belgien.eu, is a practical instrument for planning your own routes. It has covered the entire East Belgian hub system for some time and is regularly updated. In combination with the app belonging to it, created routes can be sent to a mobile phone, which makes them usable as offline maps while being on the way.



If you don't want to plan your own tour, you will find a selection of the most beautiful hikes in the region under "Genusstouren – Am Wasser entlang, im Wald und Panorama" (Enjoyable tours – Along the water, in the forest and panoramas).



Province
de Liège
Tourisme



Further information:

Tourismusagentur Ostbelgien

Hauptstraße 54, B-4780 Sankt Vith
T. +32 80 22 76 64
info@ostbelgien.eu
www.ostbelgien.eu

GästeCard

Adventure Region Eifel National Park – environmentally friendly & holidays without traffic jam



Welcome in the Adventure Region Eifel National Park!

This wonderful region comprises of Monschauer Land (City Region Aachen), Northern Eifel (district Euskirchen) and Rureifel (district Düren) and it offers a great number of special nature and cultural experiences.

With the **GästeCard** Adventure Region Eifel National Park you cannot only go on a free and environmentally friendly adventure trip by means of public transport (ÖPNV), you are also granted a discount or additional performances at participating sights and leisure time facilities.

GästeCard Adventure Region Eifel National Park

As a guest, participating overnight accommodations provide you with the free GästeCard for the duration of your stay. Within the adventure region and the whole area of the Verkehrsverbund Rhein-Sieg (VRS) and the Aachener Verkehrsverbund (AVV) you can make free use of busses and trains.

At early booking you will get your ticket already before your stay so that you can use it for your arrival in the VRS and AVV-area, e.g. with the local trains of the Deutsche Bahn from Cologne. Besides the ÖPNV-ticket, you save hard cash with the GästeCard by reduced entrance fees at the participating excursion destinations. Which hosts provide the GästeCard?



An overview of the participating overnight accommodations is found under www.erlebnis-region.de.

What kind of discount is granted by which partners?

The participating sights and leisure time facilities are listed with their offered reduction or their additional performances under www.erlebnis-region.de.

Advantages of the GästeCard at a glance

- Environmentally friendly, economical journey into your holidays without traffic jams
- Free arrival and all drives with busses & trains in the Aachener Verkehrsverbund (AVV) and Verkehrsverbund Rhein-Sieg (VRS)
- Free drive with the ÖPNV during your holiday in the Adventure Region Eifel National Park, e.g. to the National Park Gates, cycling & hiking tracks, sights, leisure time facilities...
- Free use of busses & trains for drives to Aachen, Bonn, Düren, Euskirchen and Cologne
- Attractive reductions and additional performances in numerous sights and leisure time facilities.



www.erlebnis-region.de



Vennbahn Cycle Route

... One of Europe's longest
converted railway embankment bike tracks



The Vennbahn Cycle Route between Aachen and Troisvierges in the North of Luxembourg - crossing the unique high moor "Hohes Venn" - with its 125 kilometres belongs to the longest railway embankment bike tracks in Europe.

It is virtually symbolic for a piece of Europe where the pulse of developments of the continent have always been particularly noticeable; originally a connection between coal mine districts in the North and steelworks in the South, then artery in the conflict zone of two World Wars, after that fallen into oblivion and today one of "Europe's new green routes", which has filled the cross-border region with new life.

The Vennbahn knows many stories! Experience a special kind of border-land flair, after conventional borders have fallen and cultural variety can be experienced in a small territory without barriers.

The Vennbahn is a special connection:

- It connects two three-country-points: that of the Netherlands, Belgium and Germany in the North and that of Belgium, Germany and Luxembourg in the South;
- It is embedded between the respectively highest hills of three countries: the hills Vaalserberg (the Netherlands), Signal de Botrange (Belgium) and Kneiff (Luxembourg);



EvBrücke am Roten Haus © Eisenschink

■ it had already been awarded several times and this years it has been graded by the ADFC as quality cycling track with 4 stars.

■ Free Tour-Apps of the Vennbahn (Apple Store/ Google Play Store) and Städteregion Aachen (Google Play Store, search word: Städteregion)

■ Stops on the Rurufur cycle trail: Eifelhöhenroute, Kyll-Radweg, Eifel-Ardennenradweg

For further information about on the different legs of the journey, services, accommodation and transfers, please visit: www.vennbahn.eu



Monschau-Touristik GmbH

Stadtstr. 16
D- 52156 Monschau
Phone+49 (0) 2472/80480
touristik@monschau.de

Tourismusagentur Ostbelgien

Hauptstraße 54
B- 4780 ST.VITH
Phone +32 (0) 80 22 76 64
info@eastbelgium.com



RurUfer-Cycle Path

Three countries – one river



© Stratmann

From its source in the High Fens in Belgium to its mouth in Roermond in the Netherlands, the RurUfer Cycle Path over about 180 kilometres leads through varied natural areas, enclosed historic town centres and idyllic landscapes. Starting at the viewing platform „Signal de Botrange“, the highest point in Belgium, the guest heads for the old clothmaker town of Monschau after passing through wooded sections. The river Rur is always to the side and from Einruhr the Eifel Lake District and the Eifel National Park spreads out before the visitor. With its unique landscapes such as the fertile plain „Jülicher Börde“ and the Indeland, the further course of the last stage through the Heinsberger Land to the Netherlands is also very bicycle-friendly.

In addition to the natural highlights, there is much more to discover: Explore tranquil villages in the extensive wetland „Rurauen“ and exciting museums in the Heinsberger Land. Enjoy the flair of the old town of Monschau and experience the rural change in the indeland. Castles, palaces and red sandstone cliffs between Heimbach and Jülich offer the opportunity for interesting stops.

Within the framework of the ERDF-supported project „Raderlebnis Rur“, the river cycle path has been expanded and made more attractive in the past two years in order to offer cyclists an even more attractive route.



© Stratmann

This year, the RurUfer Cycle Path finally shines in new quality. In addition to fascinating natural landscapes, visitors can look forward to exciting adventure stations and stories along the cycle path, which turn a cycle tour through the far west into a unique adventure through the ages.

Follow contemporary witnesses from the past and present that give voice to the changes in the natural and cultural landscapes along the river.

You can already explore the RurUfer Cycle Path before your journey on the newly designed home page www.ruruferradweg.de!



Contact:

Rureifel-Tourismus e.V.

Phone +49 (0)2446/80579-0

info@rureifel-tourismus.de



EUROPÄISCHE UNION
Investition in unsere Zukunft
Europäischer Fonds
für regionale Entwicklung



Mountains & Fertile Plains

Hiking, cycling, mountain & gravel biking in a varied leisure landscape



© Dennis Stratmann / Grünmetropole e.V.



© Dennis Stratmann / Kreis Düren

Discover the district of Düren with the low mountain range character of the Rur-Eifel in the south and the gentle Börde landscape (fertile plains) in the north, where it is great for hiking, cycling, mountain & gravel biking.

The Rur-Eifel captivates with its narrow stream valleys, steep slopes with bizarre rock formations, moors, species- and flower-rich landscape and its magnificent views into the valleys, Börde and Rhine valley. This topography offers ideal conditions for hikers and cyclists who love the ups and downs of the mountains. The well-marked network of hiking and cycling trails leads to many a hidden gem and, like the tranquil Eifel villages with rest and refreshment facilities, paves the way for deceleration.

Those who like it sportier, Freifahrt Eifel www.freifahrt-eifel.de guarantees riding fun on nine varied and well-marked mountain bike tours. If that's not enough, there are mountain bike tours, most of which are also suitable for gravel bikes. The rapid descents are unparalleled in the northern Eifel.

re-naturalised „Neue Inde“ meanders naturally through a fertile plain with wetland biotopes and has regained its original meandering form. Accompany it on its way around the Inden open-cast mine and experience the change in landscape at first hand. You can also experience this from the steel Indeman, the region's landmark, with a fantastic panoramic view.

During or after your tour, visit one of the many refreshment stops in the region and enjoy the gastronomic offerings.

In the two flyers „Discovering tours on foot and by bike“ you will find ten tips for cycling, hiking and MTB tours in the Düren district. All starting points can be reached in an environmentally friendly way by bus and train. The flyers are available free of charge from the Düren district administration and at the tourist information offices in the Rur-Eifel region, at the iPunkt in the city of Düren and in Indeland.

Information: Kreis Düren

Bismarckstraße 16
52351 Düren
Tel.: +49 (0) 2421/220
tourismus@kreis-dueren.de
www.tourismus.kreis-dueren.de



The gentle Börde landscape in the northern district, on the other hand, is ideal for leisurely tours and invites you to discover the changing region on foot or by bike. The Sophienhöhe, a spoil heap from the Hambach open-cast mine, was recultivated in the 1980s and is a paradise for all those who enjoy outdoor activities. The

Plannable leisure fun

Cycling, hiking, enjoying nature. Discover the many facets of the StädteRegion Aachen.



Located in the border triangle in the immediate vicinity of the Netherlands and Belgium, the StädteRegion Aachen, the westernmost corner of Germany, exudes a very special border atmosphere. Immerse yourself in the exciting mixture of impressive landmarks such as mining slagheaps, picturesque reservoirs and wild, romantic High Fens and let yourself be enchanted by the charm of the old imperial city of Aachen with the UNESCO World Heritage Aachen Cathedral. Numerous cycle and hiking paths offer fantastic opportunities to discover the diversity of the urban region on foot or by bike.

In the regional cycle and hiking route planner (www.staedteregion-aachen.de/routenplaner), guests can obtain comprehensive information on the most beautiful cycle and hiking routes in the urban region of Aachen. Maps, places of interest, degree of difficulty, elevation profile or arrival and departure tips for approx. 400 routes can be conveniently called up and bundled and printed out at home as a PDF file. For users of navigation devices GPX files are available for each route as download.

The cycle and walking route planner is supplemented by the StädteRegion Aachen's tours app, in which the information on the routes described above is also available and displayed in a zoomable, topographical map. Like a travel



© Dominik Ketz

guide, the app uses GPS positioning to navigate through the region and provides information about places of interest and places to stop for refreshments along the routes. All tours and the map can be conveniently stored offline, so that a mobile phone network is not necessarily required on the tour.

The free application can be installed on Apple iPhones, Apple iPads and on smartphones with the operating system „Android.“ To do this, open the iTunes App Store or the Google Play Store on your smartphone and simply search for „StädteRegion Aachen.“

Contact: StädteRegion Aachen

Zollernstraße 10
52070 Aachen
Phone +49 (0)241/5198 2177
Fax: +49 (0)241/5198 82177
fahrrad@staedteregion-aachen.de
www.staedteregion-aachen.de

iOS Android





Gemeinsam an allem gewachsen.

Gemeinschaft kommt nicht von allein. Gemeinschaft kommt von schaffen. Darum unterstützen wir Sportler, Künstler, Unternehmer vor Ort und all die anderen, die sich für andere stark machen.

Weil's um mehr als Geld geht.



Sparkasse

COMING SOON AM NÜRBURGRING



LUCIA

• POLLO ITALIANO •
NÜRBURGRING

LUCIA-NUERBURGRING.DE



KNUSPRIGES
HUHN • NATUR
ITALIENISCHE
ANTIPASTI

Ein Unternehmen der Lindner Hotels AG - handelnd für die
Nürburgring Holding GmbH Eifel Ardennen Straße • 52520 Nürburg



Holsthum bei Bitburg im Naturpark Südeifel



Bester Geschmack hat ein Zuhause Willkommen in unserer Bitburger Erlebnisswelt!



Sehen, hören, riechen und schmecken: Entdecken Sie die Bitburger Erlebnisswelt mit allen Sinnen und erfahren Sie mehr über unsere Familienbrauerei. Erleben Sie hautnah, mit wie viel Leidenschaft und handwerklicher Tradition unsere Biere seit über 200 Jahren gebraut werden. Und erfahren Sie, was das Geheimnis des Bitburger Siegelhopfens ist.

**Wir freuen uns auf Ihren Besuch und bitten Sie
um vorherige Anmeldung.**

Bitburger Erlebnisswelt

Bitburger Braugruppe GmbH

Römermauer 3 • 54634 Bitburg

Telefon: 06561 14-2497

E-Mail: erlebnisswelt@bitburger.de

Website: www.bitburger.de/besuch

Bitte ein Bit

