



GB ADVENTURE REGION AROUND THE

Nationalpark Eifel

THE LEISURE GUIDE 2023

www.erlebnis-region.de

Mechernich-Eifel.de

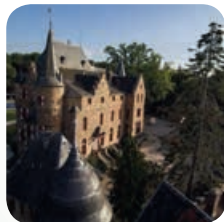
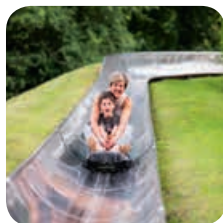
Stadt am Nationalpark Eifel



...für alle ein Erlebnis!

Mechernich ist der ideale Ausgangspunkt für erlebnisreiche Urlaubstage in der Eifel.

Hier, am Eingang zum Nationalpark Eifel, ist die Vielzahl der beeindruckenden Sehenswürdigkeiten, Denkmäler und der interessanten Freizeiteinrichtungen auf so engem Raum einzigartig.



Telefon 02443-494322 · www.mechernich-eifel.de

Nationalpark Eifel

THE LEISURE GUIDE 2023

Dear readers,

We are pleased to present you the new edition of our leisure guide. Here we present a wide range of excursion destinations in the region. With the help of a clear colour coding system, you can see at a glance, whether it is a topic related to the Eifel National Park, a sight, an attraction for the family or a leisure activity on water or on land. All our advertisers have set themselves the task of offering you the most delightful and varied leisure time break possible.

If you are looking for even more excursion tips or ideas for the family, you will find them digitally on our new leisure and family portal www.fridolin-familienmagazin.de.

Enjoy reading and experiencing, Your leisure guide team!

Publisher: Weiss-Verlag GmbH & Co.KG in co-operation with: Monschauer Land Touristik e. V.
Seeufer 3 · 52152 Simmerath
Phone +49 (0) 2473/9377-0
info@monschauerland.de
www.monschauerland.de
Rureifel-Tourismus e. V.
Nationalpark-Tor
An der Laag 4 · 52396 Heimbach
Phone +49 (0) 2446/805 790
info@rureifel-tourismus.de
www.rureifel-tourismus.de

Nordeifel Tourismus GmbH
Bahnhofstraße 13 · 53925 Kall
Phone +49 (0) 2441/994 570
info@nordeifel-tourismus.de
www.nordeifel-tourismus.de
Concept/design:
info@w-design.biz, 52152 Simmerath
Publisher: Weiss-Verlag GmbH & Co.KG
Hans-Georg-Weiss-Straße 7
52156 Monschau
Management director:
Martina Schmitz, Alexander Lenders
Head of publishing:
Andreas Rohfleisch

 NATIONALPARK EIFEL

 WORTH SEEING

 FAMILY & ADVENTURE

 WATER & WELLNESS

 LAND & EXPERIENCE



Nationalpark Eifel, experiencing nature, observing animals, discovering plants, finding rest.



Offers for families, suitable for children, offers fun and entertainment for all in the family.



Great panoramic views, impressive mountains and elevated plains, steep gorges and smooth valleys.



Point of interest of historical or cultural importance, rarely mentioned in history books.



Barrier-free



The location of the individual companies is shown on the map inside.

The Eifel National Park

Virgin forest of tomorrow



In the Eifel National Park, forests are on their way back to wilderness. This exciting process can be experienced on guided tours or on your own, as here on the Wilderness Trail. Photo: D. Ketz

Under the motto „Let nature be nature“, something happens in the Eifel National Park that is unique in this size in North Rhine-Westphalia: Here, nature can develop freely according to its own laws over large areas. Experience the exciting process of newly emerging wilderness at first hand! Observe wild animals, roam through natural mixed beech forests and enjoy panoramic views of impressive lake lands or over the open grasslands of the Dreibern plateau.

In some areas, man can still intervene until 2034 to support forest development, e.g. by planting beech trees under spruce trees or by removing spruce trees in stream valleys.

Wildcat, Black Stork and Co.

More than 2,500 endangered animal and plant species live in the Eifel National Park. The beaver builds its castles in the waters of the National Park region and kites fly their circles above the reservoirs. Brook trout, lampreys and minnows thrive in the low mountain streams. The black stork particularly likes to search for food

in shallow pools. The wildcat is also widespread throughout the National Park. It lives mostly hidden in the forests. The National Park and its surroundings are home to a significant red deer population. With a little luck and patience, they can be observed in the wild.

The Eifel National Park Area: 11,000 ha

Established: 2004 as a development national park. From 2034 at the latest, process protection will apply to more than 75 % of the area.

Animal and plant species: more than 11,205 of which almost 2,571 are endangered: For example, wildcat, middle spotted woodpecker, wall lizard, warthog, branchless grass lily, German hound's tongue

Trail network: 240 km of hiking trails, 110 km of which are cycle paths and 65 km riding trails, 2 cross-country trails



You can experience the national park on 240 kilometres of hiking trails. Photo: D. Ketz

Eifel National Park

Experiencing stars and constellations intensively is hardly possible in many places. In the Eifel National Park, however, the Milky Way can be seen with the naked eye. The National Park has been recognised as an International Star Park since 2014. The observatory regularly offers programmes to experience the night sky (see page 17).

Experience National Park - On your own

The National Park can be explored on your own on a network of hiking, cycling, bridle paths and cross-country ski trails totalling 240 kilometres. Whether along the Wilderness Trail, the Creation Trail or one of the signposted themed hiking trails. In addition, you will find varied tour suggestions for every taste at Outdoor Active and Komoot: in the digital hiking portals you will also find paths that run away from the main visitor attractions and thus offer the chance to explore the Eifel National Park largely undisturbed. For example, the trail "Ruhe-Tankstelle", that is only seven kilometres long, is one of our top tips on Outdoor Active.

The approximately two-hour tour leads from Mariawald Monastery to more remote forest corners of the National Park. There you can experience near-natural and newly emerging forest images. Small streams, dense forest and open pastures make this a varied tour. The tour is 7.1 kilometres long and takes about two hours.

Wilderness Trail

The Wilderness Trail leads in four daily stages along the entire length of the Eifel National Park. On hiking trails between 18 and 25 kilometres in length, the entire diversity of habitats in the National Park can be discovered (see page 97).



There are all kinds of things to discover on the Wilderness Trail. (Photo: D. Ketz)

Creation Path

The 2.5-kilometre-long creation path with its ten stations is called „On the trail of life“. A walkable labyrinth invites you to take the „path to the centre“. The entrance to the Creation Path is in Simmerath- Erkersruhr/ Hirschrott. Parking is available at the Finke-nauel car park, 1.5 kilometres away.



Mariawald Monastery is the starting point for the „Ruhe-Tankstelle“ tour – described in *Outdoor Active*. You can get to the Mariawald monastery with the bus lines Mäxchen (M) and line 231. Photo: D. Ketz



The populations of the White-banded Meadowbird are declining overall, but can be found in some places in the National Park. © Dr. A. Parday



In the management zone, still young beech trees are planted under old spruce canopies to support the development towards a stable mixed deciduous forest. (Photo: M. Weisgerber)

Bird Watching Station

Between Gemünd and the Urft dam, an observation station invites you to explore the wide view of the dam and its birdlife through telescopes free of charge. With a bit of luck, grey herons, great crested grebes and cormorants can be observed there. An information board that can be accessed by wheelchairs provides information about the local landscape and birdlife.



With a little luck, you can observe the birdlife at the Bird Watching Station. Photo: T. Wagner

Vogelsang, Dreiborn Plateau and Wollseifen

The Vogelsang IP international site is located in the middle of the Eifel National Park. This is where the National Socialists built the Ordensburg Vogelsang in 1934. After the end of the war, the Belgian military took over the site and established a 3,300-hectare military training area around Vogelsang.

The former village of Wollseifen lies in the middle of the Dreiborn plateau. At that time, 120 families had to leave their homes within a few weeks. Today, the wide plains of the Dreiborn plateau can be experienced by visitors on a marked network of paths. An exhibition in the old school recalls the fateful history of the people.

From April to October, carriages shuttle between Vogelsang and Wollseifen every first and third Sunday of the month. A ramp also allows people in wheelchairs and their companions to ride in the carriages.

Guided hikes

Ranger tours

Well acquainted with the secrets of nature, rangers of the National Park lead tours of varying length and difficulty through the National Park. If you are interested in a ranger tour, please visit www.nationalpark-eifel.de/veranstaltungen to find out about the current offers.



In the Eifel National Park, hikers can watch nature gradually find its way back into its very own cycle of becoming and passing away. (Photo: D. Ketz).

Group tours

Whether it's a group of friends, a club, a company, a children's or senior citizens' group - all groups are in good hands with the volunteer forest guides. For a fee of 55 Euros per group of up to 20 people for three hours, the certified nature and landscape guides will lead you on individual routes of your choice. A fee of 15 Euros is charged for each additional hour. A one-off charge of 15 Euros is made for long-distance walks. Tours in a total of ten languages, including Russian, Turkish and Dutch, can be booked through the national park administration. Hiking tours with the forest guides can be booked through the Eifel National Park Administration. At www.national-park-eifel.de/wald-fuehrer you will find all the information about this offer.

Family days

A colourful hands-on programme awaits all nature-loving families on short hikes program-

me. The aim is to playfully read animal tracks, solve plant puzzles, experience nature with all your senses or track down wild places in the national park. For a fee, the national park administration can also book individual family tours accompanied by a forest guide, e.g. for a child's birthday. Further information: www.national-park-eifel.de/family-tour

Offers for school classes, children's and youth groups

Whether barrier-free educational programmes or adventure tours tailored to the classroom - the National Park Authority is happy to tailor its offers to the interests and needs of the group. On the half-day tours, they are integrated into the programme through games and activities. The National Park Authority also offers free educational events for students or school staff. School classes can spend a whole day at the barri-



The Eifel National Park has great offers for children and young people. But you can also experience forest nature on your own. Photo: D. Ketz

er-free environmental education facility „Wildniswerkstatt Düttling“. At the Naturerlebnistreff (NESt) in the youth forest home in Kall-Urft, school classes learn about the diversity of the forest ecosystem in programmes lasting several days.

In addition, the Eifel National Park Centre offers a variety of events to accompany the barrier-free exhibition. „Wilderness(t)räume“ an.

Barrier-free offers

Since the establishment of the large protected area, the national park administration has pursued the goal of making the Eifel national park region accessible to people with and without disabilities: Tours with translation into sign language, barrier-free exhibitions in the National Park Centre, in the National Park Gates and National Park hosts who are qualified in accessibility. Information on accessibility at www.nationalpark-eifel.de/barrierefrei



Barrier-free exploration in the large adventure exhibition „Wildnis(t)räume“ in the Eifel National Park Centre. Photo: D. Ketz

The barrier-free nature experience area Wilder Kermeter enables people with and without disabilities to experience nature on their own: in addition to the barrier-free nature discovery trail „DerWildeWeg“, 4.7 kilometres of barrier-free, finely gravelled paths open up the important red beech mixed forests.



Arrival & Accommodation

National Park hosts

Restaurants, hotels, guest-houses, youth hostels, holiday flats and campsites have certified themselves as National Park hosts.

These establishments meet various quality and environmental criteria and provide information about the protected area. In addition, some national park hosts have developed barrier-free offers. These have been inspected by the National Co-ordination Office for Tourism for All (NatKo). The National Park hosts are listed on a map in the centre of this brochure.



Some National Park hosts offer the popular GästeCard Erlebnis-region Nationalpark Eifel. Photo: M. Weisgerber

Experience nature - free of charge with GästeCard

There is the possibility to explore the national park region free of charge by bus and train. As an overnight guest in participating businesses, visitors receive free travel passes for the duration of their stay.



With the guest card, visitors can use buses and trains free of charge. Photo: A. Simantke

the Eifel National Park Adventure Region Guest Card. This includes the use of buses and trains in the entire adventure region and beyond in the area of the Rhine-Sieg Transport Association (VRS) and the Aachen Transport Association (AVV).

In addition, overnight guests with the guest card receive discounts on admission tickets for sights and leisure facilities as well as free additional services at excursion destinations. www.eifel-gaestecard.de



The adventure exhibition „Wildnis(t)räume“ offers all kinds of exciting nature puzzles. Photo: D. Ketz

Further information

Ausstellungen

In the Eifel National Park Centre in Vogelsang IP, the large experience exhibition awaits you.

„Wildnis(t)räume“: Fascination on 2,000 square metres for young and old, barrier-free and multilingual experience (see page 11). The National Park Gates in Simmerath-Rurberg, Heimbach, Monschau-Höfen and Nideggen offer tourist services and small exhibitions on various topics related to the Eifel National Park. More information on pages 12-13.



Kontakt: Nationalparkverwaltung Eifel

Urfteeseestraße 34
53937 Schleiden-Gemünd
Phone +49(0) 2444/9510-0
Fax: +49(0) 2444/9510-85
info@nationalpark-eifel.de
www.nationalpark-eifel.de

VOGELSANG IP

Exhibition and education centre with NS documentation and Eifel National Park Centre at the International Square



Forum Vogelsang IP is located in the middle of the Eifel National Park in the listed buildings of the former Nazi „Ordensburg“. After the Second World War, the complex was a military training area for more than five decades. Since 2006 a new location has been developing: Vogelsang IP as an „International Place“ for tolerance, diversity and peaceful coexistence.

Respect, willingness to talk and openness are values to which all local institutions are committed. Together with many regional partners in the district of Euskirchen, Vogelsang IP stands up against right-wing extremism and racism.

A day at the Place of Remembrance on the premises of Vogelsang IP becomes a short holiday between historical experience and nature experience, with a lot of „being outside“ and adequate protection and distance possibilities inside.

The centrepiece is the exhibition, education and visitor centre with two large permanent exhibitions, which provide contemporary, barrier-free and quadrilingual access to the central themes of the site - history and nature. The history and significance of this Nazi perpetrator site are vividly explained during daily guided tours of the site.

The exhibition „Bestimmung: Herrenmensch. NS-Ordensburgen zwischen Faszination und Verbrechen“ (Destination: Herrenmensch. NS Order Castles between Fascination and Crime) takes a look at concrete perpetrator actions and the perpetrators themselves and



their convictions, but also opens up the perspectives and voices of victims.

Vogelsang ip is a popular, because authentic extracurricular learning place, as well as an extraordinary event and conference location. There are also many possibilities for company outings and corporate events, for example in combination with the Vogelsang gastronomy.

Opening hours of the Forum Vogelsang IP with the permanent exhibitions and the restaurant: daily from 10 a.m. to 5 p.m., Christmas Eve and New Year's Eve from 10 a.m. to 2 p.m., variations possible in the low season, see www.vogelsang-ip.de.

VOGELSANG IP - THE GUIDED TOUR

daily 2 p.m.; Sat, Sun, public holidays 11 a.m. and 2 p.m., tower ascents with 360-degree view daily from April to October, individual group bookings and in-depth formats also available in foreign languages.



VOGELSANG IP
IM NATIONALPARK EIFEL

Information und Buchung:

Phone +49 (0) 2444/91579-0

Fax +49 (0) 2444/91579-29

oder per E-Mail an:

info@vogelsang-ip.de oder

buchung@vogelsang-ip.de

www.vogelsang-ip.de



„Dreams of Wilderness“

An amazing barrier-free and interactive exhibition



© Photos: Dominik Keitz

In the **Eifel National Park Centre** at the „Internationalen Platz“ Vogelsang IP, guests can experience nature with all their senses. Surrounded by dense mixed deciduous forests, the modern visitor centre above the Urftsees is home to the interactive exhibition „Wilderness Spaces“. A great place to go whatever the weather. Go on „dream of the wilderness“!

Magic of the Wild

The exhibition, displayed over 2,000 square metres, follows the natural circle of life in the Eifel National Park. Starting with a walk through a beech tree „From the crown to the root“, visitors are guided through fascinating water worlds, see life through the eyes of an insect and immerse themselves in the never-ending biodiversity of natural beech forests. There are interesting stops along the way plus some great panoramic viewpoints overlooking the national park where you can sit and soak it all in for a while.

The interactive stations are specially designed to be touched and tried out, like the models of animals, the scents of plants and the soft fur of a beaver. They make for an exciting experience.

For everyone

The „Wildness Spaces“ are great for everyone! People of all ages, families with children, schools, foreign-speaking visitors and people with disabilities can explore the exhibition eit-

her on their own or on a guided tour with the ranger.

All the rooms and sanitary facilities have wheelchair access. Tactile and auditory guidance systems are available. The main content is translated in several languages as well as in plain text and braille. Multimedia guides also offer German sign language. The team at the National Park Centre Eifel will be happy to advise you.

Opening times:

Every day from 10am to 5pm

Daily guided tour without prior booking 2pm

Bookings:

Individual tours of the exhibition - also in combination with hikes, children's birthday parties and school outings

For further information and prices visit:

www.nationalparkzentrum-eifel.de

Nationalpark
Zentrum Eifel



Contact:

National Park Centre Eifel

Forum Vogelsang IP

Vogelsang 70

D-53937 Schleiden

Phone +49 (0) 2444/91574-0

info@nationalparkzentrum-eifel.de



National Park Information Points

Four exhibitions with interesting themes around
the Eifel National Park

Four National Park Gates provide information on fauna and flora in the Eifel National Park. In addition each of the information offices provides a touristic service area, in which extensive information on leisure time and adventure offers of the region are available. At free entrance the **information offices are open from April- Oct., daily from 9:00 a.m. – 1:00 p.m., 1:30 p.m. – 5:00 p.m., from Nov. – March daily: 10:00 a.m. – 1:00 p.m., 1:30 p.m. – 4:00 p.m.,** Christmas Day and New Year closed. Information on accessibility of the National Park Gates is obtained in the individual information offices or in the Internet under **www.nationalpark-eifel.de**



National Park Gate Rurberg

Discover still waters and streams of the Eifel National Park. And in Simmerath visit the exhibition "Lebensadern der Natur" (lifelines of nature) Follow exceptional animal tracks leading you through natural and cultural history. Experience the fascinating water landscape from the perspective of a kite and stroke a beaver. Also crayfish and pearl oyster provide insight into their life and show you the purpose of national parks. Exhibition literature is available in four languages for download on your Smartphone.

National Park Gate Rurberg

Rursee-Touristik GmbH · Seeufer 3
52152 Simmerath-Rurberg
Tel. +49 (0) 2473/93 77 0
Fax +49 (0) 2473/93 77 20
info@rursee.de · www.rursee.de



National Park Gate Nideggen

Explore the "Schatzkammer der Natur" (treasury of nature). In the focus of the exhibition are ideas, which human beings imitated from animals and plants: insect legs serve as a model for the development of vehicles. A school of fish shows possible solutions for trouble-free logistics. As a contrast you can listen to roaring bears, hooting owls and howling wolves Blind and visually impaired people are guided through the exhibition by a barrier-free guiding system. Audio equipment in German, Dutch, French and English can be rented.

National Park Gate Nideggen

Im Effels 10 · 52385 Nideggen
Tel. +49 (0) 2427/3301150
Fax +49 (0) 2427/3301295
nideggen@rureifel-tourismus.de
www.rureifel-tourismus.de



National Park Gate Heimbach

Central element of the exhibition “Waldgeheimnisse” (forest secrets) in the railway station Heimbach is an accessible audio drama, which leads visitors through a beech labyrinth. As prominent National Park inhabitants feral cat and black stork disclose many secrets of nature in the Eifel National Park. Tangible preparations and explanations in braille make this exhibition an attractive offer for blind and sighted people.

National Park Gate Heimbach Rureifel Tourismus e.V.

An der Laag 4 · 52396 Heimbach
Tel. +49 (0) 2446/805 79 14
Fax +49 (0) 2446/805 79 30
heimbach@rureifel-tourismus.de
www.rureifel-tourismus.de



National Park Gate Monschau-Höfen

The exhibition in the “Bundesgolddorf” Höfen (one of the winner’s of the contest “our village will be more beautiful”) informs on the changing forest conditions and wild animals in the Eifel National Park. Located right in the area with the biggest occurrence of wild narcissus in Germany, also the necessary caring measures for preservation of narcissus meadows are explained. In addition Hubert vom Venn tells his very own opinion of the National Park subjects. The exhibition is multilingual and barrier-free.

National Park Gate Höfen Monschau-Touristik GmbH

Hauptstraße 72-74 · 52156 Monschau-Höfen
Tel. +49 (0) 2472/802 50 79
Fax +49 (0) 2472/802 49 77
nationalparktor@touristik.monschau.de
www.monschau.de

National Park Information Points

Here, guests receive detailed information about the Eifel National Park



Info Point Monschau

In this modern service centre there is a film running which presents the Eifel National Park and surrounding region. It is open daily and provides information about activities on offer in the National Park, hiking maps, hiking guides, tickets for events, advice and bookings for accommodation, guided tours and arrangements. |



Information Point Monschau
Monschau-Touristik GmbH
Stadtstraße 16 · 52156 Monschau
Tel. +49 (0) 2472/8048-0
www.monschau.de

Gemünd National Park Info Point

The Tourist Information Centre with its National Park Info Point is your first contact point for all questions about Schleiden and the National Park: we can advise you on activities and excursions, arrange accommodation and help you organise your stay. In addition to information material, you will also find a selection of cycling and hiking maps as well as regional souvenirs.



Nationalpark-Infopunkt Gemünd
Dreiborner Str. 59
53937 Schleiden-Gemünd
Tel. +49 (0) 2444. 2011
www.natuerlich-eifel.de

Info Point Einruhr

Refresh yourself with cool charmstone spring water directly from the well, before you get information from the National Park information point. Have a rest in the hiking station by the crackling log fire or watch a thematic film on flora and fauna of the Eifel National Park.



Information Point Einruhr

im Heilsteinhaus · Franz-Becker-Str. 2
52152 Simmerath-Einruhr
Tel. +49 (0) 2473/937717 · www.rursee.de

Info Point Zerkall

Besides numerous brochures and flyers the film presents the Eifel National Park; an ideal place for canoe tours on the Rur or an excursion into the climbing district of the Rureifel.



Information Point Zerkall

Auel 1 · 52393 Hürtgenwald-Zerkall
Tel. +49 (0) 2427/90 90 26
www.infopunkt-zerkall.de

Info Point Schmidt

St. Hubertus Church, Monschauer Str. 52385 Nideggen-Schmidt, Point of contact for guests to the National Park, meeting point for hikes, Tourist Information in the church, Films, Internet, maps and extensive publications on the Eifel National Park, Films and texts about the church of „St. Mocha“ and its special history, Illustrative models for renewable energy technology in sacred buildings.



Information Point Schmidt

Kirche St. Hubertus, Monschauer Str.
52385 Nideggen-Schmidt

Info Point „Waldhaus“

in the Open-Air Museum Kommern. Media installations and a National Park film present the large-scale protected area Eifel. Break point of the bike & hike trail „Wasserburgen-Route“.



Information Point „Waldhaus“

im LVR-Freilichtmuseum Kommern
Eickser Straße · 53894 Mechernich-Kommern
Tel. +49 (0)2443/9980-0

Info Point Kall

A film shows the fascination of the Eifel National Park. Information on the National Park by means of displays on touch screens. Presentation of numerous flyers and brochures.



Information Point Kall

in the train station building · Bahnhofstraße 13
53925 Kall, Tel. +49 (0) 2441/777 545

Opening times:

Monday to Friday: 6:00 a.m. – 6:00 p.m.

Saturday: 8:00 a.m. – 6:00 p.m.

Sundays and holidays 9:00 a.m. - 5:00 clockp.m.

Info Point Mechernich

in the mining museum Mechernich & visitor's mine Grube Günnersdorf
printed media is display



Information Point Mechernich

Bleibergstraße 6 · 53894 Mechernich
Tel. +49 (0) 2443/48697
www.bergbaumuseum-mechernich.de
bergbaumuseum-mechernich@t-online.de

Opening times:

From Tuesday to Saturday: 2:00 p.m. to 4:00 p.m., Sunday: 11:00 a.m. to 4:00 p.m.

Hellenthal National Park Info Point

The Tourist Information Centre at the foot of the National Park offers brochures, a selection of cycling and hiking maps and souvenirs.



Information Point Hellenthal

Tourist-Information · Rathausstraße 2
53940 Hellenthal · Tel. +49 (0) 2482/85 115
tourismus@hellenthal.de · www.hellenthal.de

Nationalpark-Infopunkt Dormio

With a beautiful view over Hasenfeld and the Heimbach water reservoir the National Park Info-Point is accommodated in the Landal Resort Eifeler Tor. There you will receive all information material about the National Park and the Rureifel. Consultations in several languages are also possible.



Dormio-Resort Eifeler Tor

Schwammenauel 6 · 52396 Heimbach
Tel. +49 (0) 2446/809 49 39
resort@rureifel-tourismus.de

Opening times:

April-October: daily,

November-March: every day except Thursday

Starry region of Eifel

A close-up and fascinating experience with nature at the observatory of the „Stars Without Borders“ astronomy workshop



© Medienzentrum Kreis Euskirchen



© Harald Bardenhagen

The **night sky** in the starry region of Eifel, with its Star Park in the Eifel National Park, offers a unique, and these days, rare experience in nature.

Take a close-up look into the vast expanses of the universe. You're sure to be fascinated by the night sky filled with stars.

This natural heritage of „**Starry Sky**“ can only be experienced in a few places in Europe. Because there is so much artificial light pollution at night most people not only miss out on a healthy night's sleep but also on a clear view of the stars in the **night sky**.

In 2014, the International Dark Sky Association (IDA) named the Eifel National Park the International Dark Sky Park - a precious quality certificate for a star-studded **night sky**.

At the observatory of the „**Stars Without Borders**“ astronomy workshop, you can glean exciting sky observations with telescopes and large binoculars both at night and day. Y

ou can see the rings around the planets, clusters of stars, distant galaxies and lunar craters, sunspots and dark patches on the sun.

If nothing else, many visitors see the Milky Way's glimmering band stretched across the sky for the first time – our cosmic home with

200 billion stars – our cosmic home with over 200 billion stars.

Guided stargazing conveys the value of natural night in a poignant way and creates an understanding of the cosmic orders of magnitude. Experiments with artificial light explain the urgent need to reduce light pollution in order to prevent damage to human health, the threat to biodiversity and the brightening of the night sky. It makes the importance of natural darkness at night tangible. and real.

Over a hundred public „Star Tours“ for all ages can be booked online. The explanations in German can be supplemented in English on request.

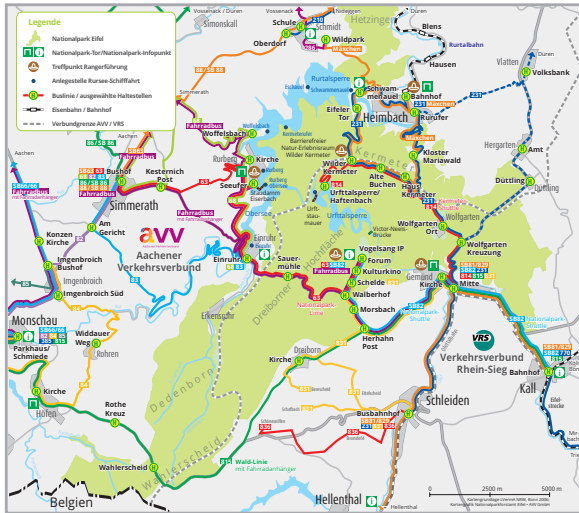
Dates, gift vouchers, online bookings and information on the observatory of the astronomy workshop „Stars without Borders“ on the International Square Vogelsang IP:

www.sterne-ohne-grenzen.de
info@sterne-ohne-grenzen.de
Phone +49 (0)221-44900586



Experience nature

... with bus & train on the road in the Eifel National Park!



The train Rurtalbahn takes you from Düren (connection to trains from Aachen and Cologne) to Heimbach. Coming from Cologne, Bonn and Trier, you can reach Kall station by train (note current information). From Aachen, buses go directly to Simmerath (SB 63) and Monschau (SB 66). From Kall, Heimbach and Simmerath there are several bus routes that take you directly to the National Park.

The Forum Vogelsang can be reached daily at hourly intervals with the National Park Shuttle (SB 82) from Kall station via Gemünd and with the National Park Line (63) from Simmerath via Einruhr.



The Kermeter can be reached from Heimbach and Gemünd by the Kermeter-Line (232). On weekends, from Easter to the 1st of November, the "Mäxchen" additionally heads for numerous excursion destinations in the Kermeter area from Heimbach and the Kermeter Shuttle (814) from Gemünd.

You can obtain a **folding map with all public transport lines**, information about the buses and trains you can use for your excursion, timetables and tickets, as well as numerous tips for hiking and cycling tours with directions, from the local transport companies, at the National Park gates or on the websites of the associations.

TIMETABLE AND FARE INFORMATION

You can obtain timetable and fare information on the websites of the Aachener Verkehrsverbund (AVV) or the Verkehrsverbund Rhein-Sieg (VRS) as well as by telephone: 0 800 6 50 40 30 (free of charge from all German networks).



avv.de



vrs.de

Travel in comfort

With the Rurtalbus GmbH through the Eifel National



Travel in comfort. The Rurtalbahn takes you safely and comfortably to the Eifel in 45 minutes. During the journey from Düren to Heimbach along the Rur, the comfortable vehicles offer a beautiful view of the Rur valley.

Once in Heimbach, guests of all ages can enjoy many leisure activities. A visit to the medieval town centre, the art nouveau hydroelectric power station, a boat trip on the Rursee or a tour guided by rangers are just a few examples. Appropriate bus connections are coordinated with the timetable of the Rurtalbahn. Use the low-priced day or 24-hour tickets for excursions.

Contact: Rurtalbahn GmbH

Tel. +49 (0) 2421 / 2769301 or at www.rurtalbahn.de

Passenger info:

Bicycles can be brought along all day, e.g. to explore the beautiful RurUfer cycle path. There are 5 bicycle parking spaces available in each vehicle.

Distance-independent
1 bike ticket per bike.

Tickets available from ticket machines at the stops. Groups wishing to take bicycles must register at least three days in advance.

On a Journey of Discovery

With the Rurtalbus GmbH through the Eifel National



A real treat for all nature lovers - during the summer season, the Mäxchen of the Rurtalbus GmbH drives to worthwhile excursion destinations on all Saturdays, Sundays and public holidays, thus providing exciting insights into the Eifel National Park.

The Mäxchen tour starts and ends at Heimbach station. After a hearty helping of delicious pea soup at the Mariawald monastery, it follows its usual route to the Kermeter hiking trails where you can go for a relaxing walk with fantastic views. But it also takes you to boat tours on the Rursee or a visit to the Schmidt Wildlife Park – adventures for the whole family.

The Scout Tour starting at Heimbach station on Sundays at 12.15 pm is the favourite of the season. Passengers learn interesting things about the nature and culture around Heimbach and the Eifel National Park.

Contact: iPUNKT Düren

Markt 6 · 52349 Düren
Tel. +49 (0) 2421 / 2000

For travel times and prices visit:
www.rurtalbus.de



D1



D1

Paper City Düren

Vibrant city history with diverse shopping
and cultural offerings



Fotos: © Eifel Tourismus GmbH, Tobias Vollmer



The city on the Rur is located on the edge of the Eifel in a charming natural setting, yet centrally located between Aachen and Cologne. It is therefore an ideal destination for a variety of trips.

Nature lovers can explore the RurUfer cycle path or the Dürener Seenrunde lake circuit by bike and end the day at one of the beautiful bathing lakes in Gürzenich and Echtz. The moated castle route, on the other hand, leads to Burgau Castle, whose beginnings date back to the early Middle Ages. The present-day buildings of the romantic complex, which was built on an island, essentially date from the 14th to 18th centuries. Today, Burgau Castle is a venue for a wide variety of cultural events and regularly offers free exhibitions. In front of the castle is a café where visitors can linger in the summer months after a long walk through the surrounding Burgau forest.

The town's cultural offerings are also waiting to be discovered. A theatre performance in the Haus der Stadt is just as worth seeing as the Stadtmuseum (city museum), which presents the history of Düren in an appealing way, and the Leopold-Hoesch-Museum, which impresses with its collection of works of expressionism and classical modernism. A visit to the paper museum is also recommended. It provides an insight into the history and diversity of paper as a material, the production and

processing of which has a centuries-old tradition in Düren.

The **importance of paper for Düren** also becomes clear in the guided tours of the town, which take place throughout the year for young and old. Each tour focuses on different themes, whereby the history, culture and attitude to life in Düren are brought vividly to life. For example, you can accompany the original Düren policeman „Wölk“ on his way through the city centre and get to know the mentality of the Rhineland.

One of the most important sights is St. Anne's Church, which has been an important pilgrimage destination and a stop on the Way of St. James ever since the head of St. Anne came to Düren in 1501. The Anna relic, which was disputed with Mainz and caused turbulent times, was ultimately awarded to Düren.

St. Anna is also the patron saint of the annual Anna Fair, which takes place at the end of July and is known nationwide for its impressive rides and diverse exhibitors. A highlight in the truest sense of the word is the „Düren leuchtet“ event, which lights up the city centre at the beginning of November with illuminated buildings and fantastic laser shows. Smaller markets such as the May market, the gourmet market and the autumn market also take place throughout the year and bring a variety of





offers to the city. The popular weekly market, which takes place every Tuesday, Thursday and Saturday, attracts many people to Düren who combine their visit with a shopping trip in the **shopping city of short distances**. Because next to the large shopping centre „StadtCenter“, various retailers, specialist shops and department stores offer attractive offers in the city centre, with something for every taste.

A suitable starting point for your visit to Düren is the iPUNKT on the market square, where you can get city maps and information about what the city has to offer.

You can find more information at www.dueren-tourismus.info

You can find more information at www.dueren-tourismus.info



iPUNKT
DÜREN

Tourismusinformation: iPUNKT

Markt 6, 52349 Düren

Phone +49 (0)2421 - 25 25 25

info@ipunkt-dueren.de

www.dueren-tourismus.info

Theater Düren

Unforgettable moments in the Haus der Stadt



© Stadt Düren

Theater Düren in the **Haus der Stadt** is an appealing venue for artists from all over the world. With its spacious stage, modern stage and lighting technology and formidable acoustics, it offers the best conditions for operas, operettas, ballets, plays and concerts.

The **theatre's program** includes around 100 performances per year including concerts by the Cappella Villa Duria, chamber concerts by the Vereinigten Industrieverbände and lots of special events from the world of musicals and cabaret, not to mention projects by clubs in the local area. The theatre hall is also used as a ballroom, for exhibitions, markets and fairs.

Theater Düren

Stefan-Schwer-Straße 4-6

52349 Düren

www.theater.dueren-kultur.de

Tickets iPunkt,

Markt 6

52349 Düren

Phone +49 (0) 2421/252525

www.tickets.dueren.de

theaterkasse@dueren.de



Dürener Annakirmes

The largest folk festival in the Euregio Meuse-Rhine



© Stadt Düren

From **29 July - 6 August 2023**, everything in Düren will once again revolve around the largest folk festival in the Euregio-Meuse-Rhine: the Annakirmes! Known far beyond the borders of Düren, the Annakirmes attracts almost 1 million visitors every year and is the highlight of Düren's calendar of events!

For one week, around 160 showmen and traders transform the square at the Rur into a colourful funfair world. Numerous children's rides, ghost trains, funfair rides, games, raffles as well as fast and leisurely rides provide the extraordinary flair of the Annakirmes!

Traditionally, on the opening Saturday, the 29th of July, the world championship in cherry pit spitting will take place from 3 p.m. on the dog sporting ground right next to the fairground. The world record (the point at which the stone rolls out) is currently an incredible 22.52 m! Another highlight of the funfair is the family day on funfair Tuesday, the 1st of August. On this day, all funfair fans have the opportunity to visit the funfair at reduced prices. Half prices on the rides and discounts on the other stalls ensure all-day fun at the funfair!

On Friday, the 4th of August, there will be the big fireworks display: with one of the most spectacular fireworks displays in the region, the Annakirmes organisers will thank their visitors for nine great days at the fair.



© Stadt Düren

Other special events, such as the senior citizens' afternoon and the Rhenish evening in the marquee, round off the funfair's varied programme. The fair ground "Annakirmesplatz", which is located at the Aachener Straße, is within easy walking distance of the town centre. The Rurtalbahn (Rurtal Railway) stops at the „Annakirmesplatz“ and shuttle buses ensure a trouble-free journey to the fairground.

Events:

29 July, 3 p.m.:

47th World Championship in cherry pit spitting

1 August, all day:

Family day with half-price tickets

2 August, from 3 p.m.:

Seniors' afternoon in the marquee

4 August, around 10:15 a.m.:

Large fireworks display

Open daily from 11:00 a.m.

Further dates 2023

1 April - 3 April, Spring Festival

28 April - 1 May, May Market and May Fair

22 October, Autumn Market

23 Nov - 30 Dec, Christmas Market



Contact: Stadt Düren

Amt für Stadtentwicklung
Schenkelstr. 23 · 52348 Düren
Phone +49 (0)2421 / 25 1342
kirmes@dueren.de
www.dueren.de



Paper Museum Düren

The material paper in all its facets



© Photo: Peter Hinschläger

Like a folded sheet of paper, the Papiermuseum Düren appears right next to the Leopold-Hoesch-Museum in the city centre. The region has been shaped by the paper industry for almost 450 years. To date, well over 100 companies are still active in the industry. Since 1990, this important material for the region has been presented in all its facets in the Düren Paper Museum - since 2018 in the spectacular new building designed by Cologne architect Klaus Hollenbeck. His material qualities, social relevance, production technology and processing as well as future viability, sustainability and the subject of **paper art** are presented. The Papiermuseum Düren is a museum to touch and focuses on inclusion. Media stations and tactile objects convey the exhibition themes interactively. Visitors can become creative themselves at traditional **paper making** and in workshops.

Contact:

Papiermuseum Düren

Wallstraße 2-8 · 52349 Düren
Phone +49 (0) 2421/25-2561
papiermuseum@dueren.de
www.papiermuseum-dueren.de



Opening hours



Di-So 10:00 a.m.-5:00 p.m.
Do 10:00 a.m.-7:00 p.m.



Closed on Mondays



Admission is free for children and young people under 18.

Leopold-Hoesch-Museum

Diverse art collection and changing exhibitions



© Photo: Peter Hinschläger

With its diverse exhibitions and collection, the Leopold Hoesch Museum, founded in 1905, offers a cross-section of art history from classical modernism to the present. Among the highlights of the collection are works by Otto Dix, Wassily Kandinsky, Paul Klee and Marianne von Werefkin, but also the kinetic light room by Otto Piene, into which viewers can immerse themselves as if into another world. In addition, the museum is dedicated to important positions of international contemporary art and cultural-theoretical topics with temporary exhibitions.

Guided tours and workshops as well as a regular film and lecture programme round off the art education. After your visit to the museum, discover unusual gift articles in the shop or enjoy refreshments in the museum café.

Contact:

Leopold-Hoesch-Museum

Hoeschplatz 1
52349 Düren
Phone +49(0)2421/25-2561
museum@dueren.de
www.leopoldhoeschmuseum.de



Opening hours



Di-So 10:00 a.m.-5:00 p.m.
Do 10:00 a.m.-7:00 p.m.



Closed on Mondays



Jülich is worth the trip

Historic fortress and modern
Research city



When someone goes on a trip, they always come back with stories to tell. Anyone who visits the Duchy of Jülich is guaranteed to pack a whole arsenal of interesting information, new impressions and experiences in their luggage – whether on a hiking break along the paths of the Pilgrims of St. James, by bike on one of the many cycling routes leading through and around the city, or on the tracks of the VIA BELGICA.

It is perfect for exploring on longer visits as well as day breaks. As the city's „trademark“, the citadel is an absolute must to visit. The Jülich Citadel is one of the best-preserved fortresses dating back to the Early Modern Period in the German-speaking world. The east facade of the ducal castle in the style of the Italian High Renaissance is an architectural masterpiece.

There is an exhibition on the history of the complex and the former duchy of the Holy Roman Empire in the castle cellar. The 90,000 square metres of meticulously restored fortress with its ramparts, corridors and casemates is particularly impressive. In the Citadel Museum, visitors can find out more about the history of the building and city – and if they book a tour in advance, they can enjoy a wonderful opportunity to explore Jülich and discover how the city got its name.

Located in the middle of the city, the citadel naturally lends itself as the ideal setting for



numerous events in the city, which attract visitors every year not just from the Eifel region, such as the artisans' market in mid-June, which has been running for over 25 years.

As a melting pot of creativity, the event presents a unique variety of works of art made by women. Every year, more than 30,000 people come to the market and all their senses enjoy a real treat. Visitors can be assured to see a mixture of traditional and modern handicrafts not found anywhere else.

But let's not forget the wine festival on the second weekend of July, the beer market at the beginning of September, the children's culture summer in August in the Renaissance garden, music concerts in the citadel's castle and the traditional Christmas market. It's impossible for anyone not to enjoy their stay in Jülich!

For further information on guided tours in Jülich contact the Jülich Office of City Marketing on 02461-63418, or email them at stadtmarketing@juelich.de and visit www.juelich.de/gaestefuehrungen.

Contact: City Jülich

Office of City Marketing
Große Rurstr. 17, 52428 Jülich
Phone +49 (0) 2461/63418
stadtmarketing@juelich.de
www.juelich.de/gaestefuehrungen



ENERGETICON Alsdorf

The energy experience museum
in the heart the urban region



A place full of energy

The fact that ENERGETICON is more than just a normal mining museum quickly becomes clear to every visitor who enters the first room of the exhibition. You are immersed in another world. If you look up, you are looking directly into our sun, day and night. Walk the path of energy alone, with your family or in groups of up to 25 people. Starting with the big bang, over fossil fuel extraction to regenerative energy.

Underground - through time to the origin of energy

Feel, hear and smell the mining that was carried out here on the Anna II site until 1983. Let one of our miners explain his „Kull“ to you during a guided tour. During the authentic tour through „his“ mine, he will let you see and experience mining through his eyes. Experience the pride that can still be felt throughout the site when our miners tell you about their time underground.

Touching expressly permitted...

...at the exhibits and experimental set-ups in the regenerative part of the „Energy Experience Museum“. Guests of all ages can try out what forms of energy there are, how they are generated and how the forces that occur there can best be used and controlled.

Test for yourself which type of set-up is most effective for wind turbines, feel the solar energy and supply a small town with electricity through your own muscle power.



Something new every now and then

When you visit our ticket office, just ask about the current special exhibition. Whether it's a picture exhibition or our Sleeperoo overnight event in the Kaue. There is sure to be something for you. In the months from March to October you can also book a pit frame climb or a guided trip to the adjacent nature reserve of the slag heap landscape park.

One day is not enough?!

If one day of visiting the Energy Experience World wasn't enough for you, no problem! Get one of our annual tickets or rent our premises! Whether school classes, company or private events, we offer the space for your ideas.

ENERGETICON gGmbH

Konrad-Adenauer-Allee 7
D-52477 Alsdorf
info@energeticon.de
www.energeticon.de

Opening hours:

Exhibitions: Tues. - Sun. 11 a.m. - 5 p.m.

Guided tours: by appointment

Bistro & Restaurant EDUARD:

Wed. & Thu. 11 a.m.-10p.m.,

Fri. & Sat. 11 a.m.-11 p.m.

Sun. 11 a.m.- 9 p.m.



Aachen

„A city to fall in love with“



© Hannah Gatzweiler



© Hannah Gatzweiler

Imperial City. Oche. Aken. Aix-la-Chapelle: Aachen has many names and is a city full of visible history. A place that, between urban flair and pub culture, has remained ancient and at the same time is so young. Situated in the Germany-Belgium-Netherlands triangle and thus very close to the Eifel National Park, Aachen is the perfect little big city.

The water has made Aachen famous. Hot, sulphurous springs already invited the Romans to Aachen. With more than 80 fountains and the Carolus Thermen, the beautiful imperial city today ensures the preservation of a bathing tradition that is over 2000 years old.

Legendary and simply beautiful, that's how the people of Aachen describe their cathedral, which forms the heart of the city. Surrounded by many small alleys and squares, the 1200-year-old landmark was listed as the first UNESCO World Heritage Site in 1978.

Unique specialities take not only visitors but also the people of Aachen themselves on a journey of enjoyment. From streusel rolls and sauerbraten to the famous Aachener Printe, the countless bakeries, cafés and restaurants leave nothing to be desired.

Visit us at the Tourist Info at the Eisenbrunnen and let our Aachen specialists guide you through our beautiful city. From January to

March you can join our popular guided tour of the old town every weekend at 11 am, and from April even daily at 2 pm. We also offer exciting themed tours for young and old, just go to our website via the QR code below and let yourself be inspired. We look forward to seeing you!



Tourist Info Eisenbrunnen

Friedrich-Wilhelm-Platz
52062 Aachen
Phone +49 (0)241 18029-50
info@aachen-tourismus.de
www.aachen-tourismus.de

The special tip: The pilgrimage "Heiligtumsfahrt" 2023

The next Aachen pilgrimage will take place from 9 to 19 June 2023. The Aachen pilgrimage is a joyful celebration of faith for young and old, bringing together pilgrims from all over the world. More info at www.heiligtumsfahrt-aachen.de.



In the footsteps of Charlemagne

The Route Charlemagne in the heart of the city leads to hot spots of Aachen's history



Exciting stories? Anyone who visits one of the stations on the Route Charlemagne in the heart of Aachen can experience them. For example, if you look into the depths of history in the **archaeological showcase in the Elisengarten**, all the way back to the Romans and the Neolithic Age. Or when listening to the mystical silence in Aachen Cathedral or walks through the dignified Coronation Hall of the historic Town Hall, built on the foundations of Charlemagne's palace. And in the „Centre Charlemagne - Neues Stadtmuseum Aachen“ you can test for yourself how heavy a knight's chain mail is.

The **Centre Charlemagne** between the **cathedral** and the **town hall** is the centre of the „Route Charlemagne“, which leads to important places of Aachen's unique cultural heritage. The museum brings to life distinctive stages in the city's history: the Carolingian period, when Aachen became the centre of the Frankish Empire, the city of royal coronations, the sophisticated spa city of the Baroque period. In the history laboratory you can immerse yourself in everyday life in Carolingian times and learn many interesting things: What clothes did ordinary people wear? What was used to make the ink for the magnificent manuscripts?

Anyone who wants to delve deeper into individual topics of the city's history or experience



them sensually will find the other stations on the **Route Charlemagne** are also worth a visit. The hot sulphur water that once attracted Charlemagne and, in later centuries, the high nobility to Aachen still gushes out of the **Elisenbrunnen**. In the **Couven Museum** you can see impressive examples of upper middle-class living culture. The rooms form a harmonious ensemble of the various furnishing styles from Rococo to Biedermeier.

In an imposing 15th century residential building, **the International Newspaper Museum** offers one of the most up-to-date and informative presentations on the international media world up to the beginning of the 21st century - including the opportunity to stand in a flurry of flashbulbs.

The **Route Charlemagne** is a good reason to make a trip to Aachen and take a look (again) at the young imperial city. And afterwards? You can go shopping or simply sip a cappuccino in one of the many street cafés and nibble on a Printe.

Contact:

Route Charlemagne

Katschhof 1 - 52062 Aachen

Phone +49 (0)241 - 432 4956

(Route Charlemagne Secretariat)

Fax +49 (0)241/432 4989

www.route-charlemagne.eu



Copper Town Stolberg

The Cradle of German Industry



Photo @ Franz-Josef Mertes



Photo @ Franz-Josef Mertes

Anyone coming to Stolberg, a city of about 60,000 inhabitants in the StädteRegion Aachen, should bring curiosity with them and be open to contrasts. Because Stolberg means both nature and industry, it means history and culture with a living past alongside modern development. The medieval castle, the landmark of the copper town, sits enthroned on a mighty limestone rock above the Vicht valley. Below the fortifications lies the historic town centre, which has been largely preserved, with its winding alleys and hidden squares. The unique copper courtyards and the three old town churches are witnesses to Stolberg's industrial development and heyday in the 17th and 18th centuries. During this time, the alloy brass, the „yellow gold“, was produced in the copper yards from the zinc ore (calamine) mined here and the imported copper. The copper masters called the metal that helped them to immense wealth „yellow copper“.

In addition to the city centre, 15 other districts shape the life of the copper city. The historic village settings in quarry stone masonry still convey a great deal of unspoiltness. A prime example is the street „Alt Breinig“, which (along with Stolberg's old town) is one of the „Historic Town Centres in NRW“ and is entirely listed. In addition, the various museums tell a lot about Stolberg's history. The Zinkhütter Hof Industrial Museum, for

example, focuses on the industrial and social history of the Aachen region. Unfortunately, the old town and other parts of the town were badly affected by the floods in July 2021, which is why construction work is still taking place in many places in Stolberg. In addition, the castle and the museum in the Torburg are currently being rebuilt and cannot be visited again until next year. While the north of the town is densely built-up, the south has extensive wooded and varied recreational areas with numerous nature reserves.

The nature reserves „**Schlangenberg**“ and „**Münsterbachtal**“ are popular destinations for hikers and botany fans. The unique, metal-resistant calamine flora grows here, above all the yellow calamine violet (flowering time from May). An important highlight among the numerous hiking trails in the region is the approximately 16-kilometre-long ‚Copper Route‘, a premium hiking trail and feeder to the Eifelsteig, which runs for over 300 kilometres from Aachen to Trier. From the ‚Alter Markt‘ in the heart of the old town to Kitzenhaus, it can be hiked within half a day.

Contact: Stolberg Tourism

Phone +49 (0)2402/99900-80
 touristik@stolberg.de
 www.stolberg-erleben.de



Guided tours in Stolberg

A variety of ways to explore the copper city

Photo © Paul Nikitkin



Stolberg-Touristik offers visitors and residents alike the opportunity to explore the copper town on many exciting and entertaining tours. In addition to the monthly tour through the alleys of the old part of the copper town, there are many other themed tours on offer: Follow in the **footsteps of the Stolberg brewmasters**, laugh at anecdotes and stories told about coffee and cake, accompany the night watchman on his tour through the city at night, or get to know the local flora on various walks through the unique natural surroundings.

You can find many more tours on our home page www.stolberg-erleben.de. All tours can also be booked for individual groups.

Guided tour of the old town:

every 1st Saturday of the month at 11 a.m., all year round

Contact:

Stolberg-Touristik

Tel. +49 (0) 2402/99900-80
touristik@stolberg.de
www.stolberg-erleben.de

Opening hours:

Tuesday - Friday 10:00 a.m. – 5:00 p.m.
 Saturday, Sunday + holiday
 11:00 a.m. – 3:00 p.m.
 Monday closed

Witness to industrial history & event location

Museum Zinkhütter Hof in Stolberg



© Eifel Tourismus GmbH, AR-shapefruitAG

As a museum for the industrial history of the Aachen region the Zinkhütter Hof shows the development of one of the oldest industrial regions for the metalworking industry in Central Europe. The permanent collection is dedicated to the themes of „Stolberg Gold“, „Zinc, a universal material“, „Aachen Needle“ and „Furniture“. In addition, other themes come to life again and again in changing exhibitions.

In addition to guided tours (once a month free of charge), **the museum** also offers tours and workshops for children and young people. In order to give them age-appropriate access to the history of their region or to give them a first impulse towards career orientation, they can visit a history workshop or a future workshop in the museum's „Forum“. The „Forum“ is an extracurricular place of learning with a varied programme that goes far beyond traditional school, training and further education.

Contact: Zinkhütter Hof

Cockerillstraße 90
 52222 Stolberg
 Tel. +49 (0)2402 - 903130
 (during the opening hours)
www.zinkhuetterhof.de

Opening hours:

Monday closed
 Tuesday to Friday from 2:00 p.m. – 5:00 p.m.
 Saturday from 2:00 p.m. – 6:00 p.m.
 Sunday from 10:00 a.m. – 6:00 p.m.



De Angel's Share Monschau

A special whisky shop with six varieties from its own production and successful tastings



Georg Huppertz traces his first encounter with whisky back to the Christmas holidays of his childhood. „My father and uncle had made it a tradition to open a bottle of whisky together every year on Christmas Day after church to enjoy over the Christmas holidays,“ explains Huppertz.

This atmospheric image still triggers feelings of warmth, joy and togetherness. And not only for him. Six years later, Georg Huppertz has fulfilled his dream and opened **Angel's Share** in Monschau.

Whisky is not only a highly complex and versatile drink. It combines a multitude of aspects. On the one hand, it is the craftsmanship and local conditions that have a direct influence on the production and taste. On the other hand, you can embark on a voyage of discovery that takes you to the most diverse places via different flavours. Here you get to know the landscape, ecological aspects and of course the people behind the whisky. The special things here are often hidden in the small things, which means that there is always a local connection, despite the internationality.



The tastings are a great success: they take place monthly and are always fully booked.



Guests can taste their way to the Scottish Highlands, the Emerald Isle or America. The focus is



also on the restaurant's own gin, which was created in cooperation with the regional spirits producer „Ewig und Selt“.

Huppertz makes his passion clear:

„I just love talking to people and tasting the whisky with them. There's really a world to discover and I don't know any other drink that is so versatile. He has already been able to convince customers who don't actually like whisky. Georg Huppertz can still surprise others who think they already know all the tastes. Anyone who pays a visit to „**Angel's Share**“ will immediately feel Georg's passion for whisky and remember the small shop, also on the tongue.

CONTACT

Angel's Share

Stadtstrasse 47

52156 Monschau

Phone +49 (0)2472 / 9876612

info@angelsshare-monschau.de

Opening hours:

Friday 2:00 p.m. – 5:00 p.m.

Saturday - Sunday 12:00 p.m. – 5:00 p.m.

and by appointment

Museum Red House in Monschau

In close contact with a family dynasty



© LVR-ZfM, E.L. Nitegöl

In 18th century Monschau, the clothier and merchant **Johann Heinrich Scheibler** succeeded in turning the elaborately produced Monschau cloth into a high-quality luxury article and marketing it throughout Europe.

As a sign of his success, he had a prestigious house built around 1760, which was also used as a trading centre with an office, warehouse and the washing of wool: The Red House.

With **13 fully furnished residential rooms**, the museum offers fascinating insights into the bourgeois life of the family. Precious canvas wallpapers, a festively set table in the dining room, the kitchen with freshly polished copper and brass kettles, salons with elegant seating or bedrooms with magnificent beds - it seems as if the family had just left the house. The walk up the world-famous oak staircase from the Rococo period will be unforgettable.

Built as a cantilever, it winds with elegant sweep over three floors. The rich variety in the lavish ornamentation of the banisters testifies to a masterly carving art.

Together with a sequence of pictures in which putti figures playfully stage the periods of cloth production, the result is a unique work of art.

The tour of the house is complemented by an extension of the exhibition in the part of the



© LVR-ADR, H. Schreiber

house called „Zum Pelikan“. This is where the trade and production of the woolen cloth, which was in great demand throughout Europe, was managed. The four completely new themed rooms are dedicated to the elaborate production of the cloth and vividly illustrate the family's trade relations. Modern presentations make it possible to experience and understand pre-industrial cloth production. Be it the 3D reproductions from the motifs of the grand staircase, which show the many work steps from wool to cloth, or the elaborately rewoven fabrics, which invite visitors to get up close to the cloth.

From 1 April to 30 November, the museum is open to the public from Tuesday to Sunday from 10:00 a.m. to 1:00 p.m. and from 2:00 p.m. to 5:00 p.m.. Admission is five Euros for adults and three Euros for students, trainees and people with disabilities. Children and young people under the age of 18, as well as refugees with appropriate proof, can visit free of charge.

CONTACT:

Museum

Rotes Haus Monschau

Laufenstr. 10 · 52156 Monschau

Phone +49 (0)2472 / 5071

info@rotes-haus-monschau.de

www.rotes-haus-monschau.de



Add some mustard!

In the historic mustard mill, some mustard is added! In the picturesque town of Monchau, mustard is still made by hand today



Here you will find us, the **Historische Senfmühle Monschau** anno 1882, known from radio and television. In the beginning, the historic mustard mill was still driven by a water wheel, later with an old transmission, which is still in operation. Visitors can tour the historic mustard mill and watch the mustard being made. As in great-grandfather times, the Moutarde de Montjoie is still processed between the heavy grinding stones. There are mustard creations of various flavours, e.g. fruity like red-currant and fig, hot like chilli and green pepper or sweet like honey-poppy and beer mustard.

In the attached mustard shop, you can try your favourite mustard from the 22 varieties currently on offer. In the shop you will also find a range of spirits refined with mustard, coffee-cream mustard liqueur (Moutardino) or mustard gin; a range of sauces such as mustard chutneys, mustard mojo or cheeky mustard fruits, fruit spreads and much more. With mustard, you can just about enchant everything. The nostalgic tin for mustard pralines and high-quality mustard treasure boxes are also wonderful gifts, of which you can find a large selection in all sizes and combinations in our shop.



The wine cellar contains over 400 different wines from all over the world. And there is something new: an Escape Room, the puzzle room. „Clemens' secret“, of course in connection with the „mustard mill“.



Guided tours and mill evening:

Wed. and Fri. 11 a.m. and 2 p.m. Guided tours for individuals (from March to October inclusive) by appointment. Guided tours for groups of 12 or more are currently available for 3 Euros per adult and 2 Euros for schoolchildren on dates agreed in writing in advance. (Price adjustment from 2023). A new concept for guided tours for children is currently being developed.

Every Thursday there is a **mill evening** with advance reservation. From 6 p.m., a guided tour of the mustard mill followed by a 3-course surprise menu with espresso and „original Monchau mustard praline“ as well as a small pot of mustard as a gift.



Historische Senfmühle Monschau

CONTACT:

Historische Senfmühle Monschau

Laufenstraße 118

52156 Monchau

Phone +49 (0)2472 - 2245

info@senfmuehle.de

www.senfmuehle.de

Like in the city – but better

Rural and yet everything is available:
Simmerath as an attractive alternative to the city



Simmerath is characterised by many special features: be it the high quality of life not only for families, the proximity to water, national park nature, air quality or the strong local retail trade as well as the range of health services. In the immediate vicinity there is everything you need for everyday life. So it is easy to say with self-confidence: Just like in the city - but better. This is how we are!

Convenient shopping and enjoying nature

With a total of 130 shops, Simmerath offers a wide range of products that invite you to go shopping. Numerous commercial and retail businesses as well as a diverse, modern retail offer fulfil all customer wishes: from washing machines to trendy outfits, from complete e-bike equipment to high-performance garden tools or building materials for home and garden.

Free parking spaces allow stress-free shopping. The numerous cafés and restaurants invite you to round off your shopping trip.

However, those who prefer to take a detour into nature will find many opportunities to enjoy their leisure time around Lake Rursee and in the beautiful villages that belong to Simmerath.

Healthy all round

Simmerath can also score points with its health care services: The Eifelklinik St. Brigida, with its



good reputation and modern medical facilities, is a strong magnet for many people who need treatment beyond the boundaries of the municipality. In addition, with more than 20 medical practices, a large number of specialists are available.

In addition, there are health and fitness offers which are accompanied by trained therapists, trainers and alternative practitioners. For example, treatments and therapies need not be interrupted even during the holidays.

Pure quality of life

Simmerath has proven to have the best air from NRW. Enjoy the soothing power of the fresh, clean air, whether you are hiking, paddling or swimming - Simmerath and the region encourage you to get active.

**We cordially invite you to
to be inspired by Simmerath!
Like in the city, but better!**



The ducal town of Nideggen

Living history



© EricJan Ouwerkerk



© Käthe und Bernd Limburg

The former ducal city of Nideggen lies on the northern edge of the Eifel - high over the coloured sandstone rock that can be seen from far and wide. From the 12th century, Nideggen, with its castle, was the residence of the counts of Jülich. Today, Nideggen offers visitors an interesting piece of history as well as being a modern place to live.

Its appeal is characterised by the lovingly maintained, historic city centre and the castle of Nideggen. Two well-preserved city gates and the city wall made of sandstone dominate the city's silhouette and make the visitors feel like they are walking through the past. One of the wild and romantic streets goes from the marketplace directly to the mighty castle with its keep, which is home to the Rhineland Castle Museum. If you feel up to it, the climb to the top of the castle is well worth the effort for the stunning views of the Rur Valley.

The city can look back on a chequered past spanning over 700-years and it still impresses visitors with its medieval style. Historical tours to different areas or interest take you on interesting tours of discovery through several centuries of history. Contact details and information are available at the National Park Gate of Nideggen, Im Effels 10, 52385 Nideggen, 02427/3301150, or by emailing nideggen@rureifel-tourismus.de. In a beautiful setting near to the National Park Gate is the most modern Eifel

Youth Hostel in the DJH Landesverband Rheinland. In addition to its modern hostel facilities and accommodation, it also offers plenty of space for meetings and seminars. There is a „view of the Eifel“ on the roof of the hostel. A fantastic view of the vast landscape of the Eifel opens up from here for visitors to enjoy. The observation deck can be easily reached at any time via the external staircase of the youth hostel.

The region offers a wealth of opportunities for exploring nature: 300 km of footpaths and an extensive network of cycle tracks run from Nideggen through the wooded Rureifel. If you want to relax, you can go to the magnificent natural Eschael beach by the Rursee in Schmidt. The nature reserve „Buntsandsteinfelsen im Rurtal“ around Nideggen is an impressive and popular climbing area; it offers climbers a challenging terrain for individual climbing fun. Welcome to the ducal city.

Information Nideggen City Administration Office

Zülpicher Str. 1 · 52385 Nideggen
Phone 02427/809-0
www.nideggen.de

Tourism Office

Rureifel Tourismus e.V.

Phone +49 (0) 2446/805-7911
Fax: +49 (0)2446/805-7930
www.rureifel-tourismus.de



The hiking region around Schmidt

A paradise for those looking for relaxation and nature enthusiasts



This history-charged place is located right on the edge of the National Park Eifel. No matter if the sun shines or it rains, for holidays in Schmidt the weather is not decisive. For all activities, no matter whether day trip or holidays, whether by car, motorbike bicycle or on foot, Schmidt is the ideal starting point for hiking tours through the National Park Eifel on approx. 300 km hiking trails across numerous hills and valleys; besides the "Schmidt Hiking Week" plenty of variety is offered.



These hikes offer an ideal start to get familiar with our surroundings. However, an excellent hiking network provides the opportunity to simply start hiking on your own. The charming Eifel village of Schmidt is an attractive destination at any season of the year. Apart from the hustle and bustle and far away from noisy traffic it is a wonderful place to relax. The fresh and clean Eifel air will clear the mind and also the restaurants in Schmidt leave nothing to be desired. Friendly hosts in restaurants, inns and cafés pamper their guests and hotels, bed and breakfast places or holiday flats meet any demand for a longer stay.

Contact: Verkehrsverein Schmidt

Monschauer Str. 55

D-52385 Nideggen-Schmidt

Phone +49 (0) 2474/311

Fax: +49 (0)2474/6167

info@vvschmidt.de · www.vvschmidt.de

It's rocking hard at lake Rursee

Tollrock Festival in Schmidt, always before the second Sunday in July



Since 2003 a real brand in the North Eifel: **The TOLLROCK Festival** in Nideggen-Schmidt!!! - **2023 on 07 and 08 July**. The open-air event on the edge of the Eifel National Park regularly welcomes Europe's hottest tribute bands, promising newcomers and now also selected original headliners from hard rock, indie rock and heavy metal. In the meantime, it has become increasingly possible to sign up popular headliners.

The wonderfully situated festival area high above the Rursee, surrounded by trees, is unparalleled and, together with the highly motivated and friendly staff and the varied catering offer, creates an incomparable atmosphere.

The first Tollrock event was held in 2003.

Since 2012, the **TOLLROCKERZ** band contest has taken place as part of the festival, a competition for young rock musicians. And since 2011, the so-called TOLLROCK WarmUp has taken place in January.

The proceeds of the festival go exclusively to the participating local clubs in Schmidt, which also provide the bar teams and ensure the physical well-being of the visitors.

All information about tickets, programme, camping and more can be found under www.tollrock.de



Tupperware of the Middle Ages

History and stories from the life and work of
Raeren stoneware pottery in the castle of Raeren



Tupperware or other plastic utensils that are found in today's households, are the equivalent of the **Rheinish stoneware** from the late Middle Ages, more precisely from the 13th to the 19th century. One of the most important production places of this extremely high-quality ceramic can currently be found in Eastern Belgium, directly on the border with Aachen and Roetgen. Well over 50 families of potters shaped the life of the villages, which have now merged under the name of Raeren.

Over several centuries, they exploited the deposits of rich clay, used the vast forests of deciduous trees to fuel their huge kilns and took advantage of the excellent transport connections. They produced up to 500,000 jugs and pots a year, which from the late 16th century they sold to North America and Southeast Asia.

During the period when the industry was blooming and before European porcelain had been invented, Raeren jugs richly decorated with images and ornaments could also be found on the tables of princes, the clergy and wealthy members of society. The Pottery Museum in Castle Raeren shows how they were produced, the specific technological developments that were required, the skills and artistic creativity behind it all, how the principles of globalisation at the time influenced our region and what the working life of the potters from Raeren was really like.

More than 2,000 exhibits have come together with modern media in our historic rooms and a successful staging of the exhibition. Furthermore, you can download the new Museum app and have a guided tour from the great master potter himself, Jan Emens, through his world.

Around the castle, you can enjoy and explore a peaceful landscape „in the footsteps of the potters“. There is a handy connection on the Vennbahn cycling route and opposite the castle, the Cafeteria Haus Zahlephohl offers a place to stop and regular special exhibitions of the museum in a converted pottery and farmhouse.

Töpferei



Contact:

Raeren Pottery Museum

Burgstraße 103 · B-4730 RAEREN

Phone +49 (0) 87/850903

Fax +32 (0)87/850932

info@toepfereimuseum.org

www.toepfereimuseum.org



The treasures of the Schleiden Castle Church

The famous König organ and the colorful church windows



The **Schlosskirche** was consecrated in 1230 as castle chapel and replaced by a gothic church around 1340, with its choir still existing. The three-nave, late gothic and still existing hall was erected under Dietrich IV. of Manderscheid-Schleiden from 1516 to 1525. Today, the Schlosskirche is a catholic parish church.

The **well-known König organ** is a piece of work of the Cologne organ builder Ludwig König from the year 1770. This masterpiece is original to a wide extent and the prospect is designed in the style of Liège baroque. The structuring of the organ prospect into upper and lower register with the pedal panel shows well the setup of the 30 sounding voices with 1702 pipes on three registers.

The colourful renaissance windows from 1535 at the front wall of the side naves show two scenes of the life of Jesus on the top: at the left from the childhood the adoration of the Three Kings, at the right from the tale of woe the mourning of the crucified. In the middle in front of the saints the benefactors are on their knees at kneelers: left side Dietrich IV. and his first wife Margareta v. Sombreff, right side Wilhelm v. Manderscheid-Kail, abbot of Prüm, Stablo and Malmedy.

Contact: Katholisches Pfarramt St. Philippus und Jakobus Schleiden

Vorburg 3 · D-53937 Schleiden
Phone: +49 (0) 24 45/32 18

Our tip: The church is open daily, summer from 9-18, winter from 9 -17 p.m.

Castle romance & Witchcraft

Lively history and picturesque ambience for romantics



© Eifel Tourismus, Dominik Katz

The castle **“Wildenburg”** is the only castle built on a hill which was not destroyed and can still be admired in the district of Euskirchen. It dates back to the 12th century and has everything that belonged to the knights' order of the noble family von Wildenberg: an outer bailey with corner tower and a small bourgeois settlement protected by the massive walls of the castle. Today the castle is used as social meeting place as well as recreation and educational facility. After centuries of an eventful and often dangerous history, today there is no sense of dark mystery left around the village Reifferscheid with its castle. Quite the opposite is the case: a pure touch of romance with its half-timbered houses, which since the Early Gothic Period have tightly been nestled against each other. The castle was first mentioned in 1106 on a sad occasion: The Lord of the castle, Heinrich Graf von Limburg, had his own homestead burned down in the battle against the emperor. Today the village and the castle ruin can be explored at a “leisurely historic round tour”.

Tourist-Information and National Park Information Point Hellenthal

Rathausstraße 2 · 53940 Hellenthal
Phone +49 (0) 2482/85 115

Fax +49 (0)2482/85 114

tourismus@hellenthal.de · www.hellenthal.de

OUR TIP: On the first weekend of Advent, the Christmas market takes place at Reifferscheid Castle. You can find more events at **www.hellenthal.de**.



Art, culture and small-town flair

The town of Schleiden and the district of Gemünd attract visitors with a wide range of offers

© Heinz Waldkat - stock.adobe.com



Almost half of the **Schleiden town area** lies in a unique landscape of forest, water and wilderness - the Eifel National Park. In addition to the scenic diversity, you will also find a wide range of cultural and artistic offerings as well as small-town activities.

Art & Culture: The castle towers above the town of Schleiden, which, together with the castle church, is the landmark of the „National Park Capital“. The famous König organ and colourful, magnificent church windows are the treasures of the castle church.

The meditation path begins **above the castle church** and invites you to take a walk through the heart of Schleiden. The meditation path encourages you to come to peace, to reflect on „God and the world“ in the truest sense of the word and to leave everyday life behind. On a route of about two kilometres, you will reach seven stations, each marked by a stele with a coloured sphere. The stations invite you to follow the colours of the rainbow, pause and let the impulses of the stelae have an effect on you (www.meditationsweg-schleiden.de).

Due to the flood disaster of 14-15 July 2022, some cultural institutions and facilities, such as the

Art Mile Schleiden and the Art Forum Eifel Gemünd, for example, were still under construc-



© Meditationsweg Schleiden

tion at the time of the publication of the leisure guide. Find out more about the current offers at the Tourist Information and National Park Info Point in Gemünd.

Enjoy a relaxed shopping trip through the tranquil towns of Schleiden and Gemünd: In the months since the flood, a lot has already happened in the town centres of Schleiden and Gemünd. Familiar faces have returned to their traditional premises or moved into other shops, but new concepts have also been established and now complement the existing range. Schleiden's market square presents a colourful mix of trade, gastronomy and services. But also in the idyllic Kneipp spa town of Gemünd, the pedestrianised Dreiborner Straße attracts visitors with modern shops and a varied shopping offer. Stroll through the two towns and explore the shops to your heart's content, from specialist shops, fashion outfits and concept shops to shops for everyday needs.

Contact:
Tourist Information and National Park Info Point Gemünd Dreiborner

Straße 59
53937 Schleiden
Phone +49 (0)2444 / 2011
www.naturlich-eifel.de



Weiss print shop museum in Eifel National Park

Black art in the green countryside



Experience the exciting world of „black art“! We will take you on a journey back in time to witness the life of the printing industry – from more than 5,000-year-old Chinese characters to Egyptian hieroglyphics and the state-of-the-art offset printing of the modern era.

It is an interactive museum, which is also ideal for workshops, seminars, presentations and private parties thanks to its modern multimedia space.

Opening times

Open to individual visitors from October to March on Sundays from 1 pm to 4 pm. The entrance fee includes a free guided tour that starts at 2 pm. For groups of 8 or more people, we can open the museum on request, on the day of your choice!

Admission fees

Single ticket €5, Family ticket €10

Our prices for group tours and workshops for children are listed here: www.druckereimuseum-weiss.de

Weiss Print Shop Museum

Am Handwerkerzentrum 16

52156 Monschau

Phone +49 (0) 2472/982-982

Fax +49 (0) 2472/982-105

info@druckereimuseum-weiss.de

www.druckereimuseum-weiss.de

Art is Liberating

Heimbach Art Academy: Experience creativity and meet like-minded people



The Heimbach International Academy of Fine Arts is a recognised education and training centre for artistic creation in fine arts in the Rhineland. Its aim is to awaken and promote the creativity of people of all generations, nationalities and professions.

Under scientific supervision, 49 first-class teachers from 14 nations with excellent pedagogical skills in the individual art genres (painting, sculpture, ceramics, drawing, printmaking, photography, film, video, performance) impart knowledge and techniques. The lecturers accompany the students from the idea of a work to its completion, help them to discover their personal artistic expression and support the development of an individual language of forms.



Contact: Internationale Kunstakademie

Hengebachstraße 48 52396 Heimbach

Phone +49 (0) 2446/809700

info@kunstakademie-heimbach.de

www.kunstakademie-heimbach.de



Place of silence and contemplation

Mariawald Abbey has been a place of prayer and a place of hospitality on the journey through the Eifel for many centuries.



Picturesquely built into the nature of the wild Kermeter above the small **Rursee town of Heimbach**, Mariawald Abbey lies in the midst of greenery and is surrounded by the unspoilt nature of the Eifel National Park.

Mariawald Abbey is a place with an age-old tradition and was the only men's abbey of the Trappist Order in Germany. After the departure of the monks, the current operator of the abbey pursues the goal of preserving this spiritual place, the abbey grounds as a cultural asset and the transfer of values of the former abbey. The abbey church is internationally known as a place of prayer and pilgrimage and is open daily.

Individual group tours of the abbey can be booked daily. An open guided tour takes place every Sunday at 2.00 pm. A visit to the abbey shop and the abbey restaurant round off your stay.

All entrances are barrier-free, and there is ample parking for cars, campers, motorcycles and coaches.

In the abbey shop you will find art and literature as well as the complete range of our own abbey products, such as the Mariawald pea soup, the abbey liqueurs, baked goods, cookies and chocolates. Furthermore you can buy Trappist beer & cheese, grey and brown bread,

bread spreads as well as fresh beef and game from our own meadows and forests.

The abbey restaurant provides with honest, daily fresh monastery cuisine for hikers, holidaymakers & day tourists for the physical well-being. On top of the list of food offers is the homemade Mariawald pea soup. Monastery beers as well as coffee and homemade cakes round off the offer and give strength for body and soul.



Contact: Mariawald Abbey

52396 Heimbach

Phone: +49 (0) 2446-9506-0

Fax: +49 (0) 2446-9506218

info@kloster-mariawald.de

www.kloster-mariawald.de

Opening hours:

Abbey restaurant

Mon-Sun and all holidays

10:00 am – 05:00 pm

Monastery Shop

11.00 am – 5:00 pm



Blankenheim castle town

Nature, culture and history at the source of the Ahr river



The historic centre of Blankenheim is characterised by numerous half-timbered buildings. The **Ahr spring** is located in the cellar of one such house. The **Eifel Museum** and the Guild House are also housed in historic buildings. Here visitors can see an exhibition on the history of the earth, the Roman Road Information Centre, an exhibition on the count's rule and the history of Blankenheim, and an art exhibition by the painter Fritz von Wille. A visit to the **Roman villa** is also worthwhile. The former „villa rustica“ is one of the most important archaeological monuments in the Rhineland. Modern reconstruction reveals the considerable extent of the former estate. And the counts have also left their mark: not far from the castle is the **Tiergartentunnel**, a former water conduit. It was built in an elaborate construction through the mountain of the Tiergarten to supply the lords of the castle with fresh water from the spring about two kilometres away.

The crossing of the AhrSteig and Eifelsteig **premium hiking trails** is also unique. The network of hiking trails in the municipality of Blankenheim promises a lot of variety on two Eifel trails and 12 Eifel loops.

Numerous events in Blankenheim also shape cultural life. The „**Tour de Ahrtal**“ provides car-free cycling fun with many action points and the summer is characterised by the open air events „**Summer at the Lake**“ with live music and



the summer cinema in the historic town centre. During the „Heimathäppchen“ in September, the historic town centre is transformed into a regional gourmet mile.

Thanks to the „**Lauschtour**“ (eavesdropping tour), which is possible via the free download of the „Lauschtour App“, visitors have the opportunity to individually explore the sights and history of Blankenheim. While visitors walk through the town and up to the castle, the smartphone provides information in audio format via the app and thus acts as a digital town guide. Children also get their money's worth: on the approximately 4 km long nature discovery trail, they playfully discover the diverse flora and fauna of the Eifel. Nine interactive stations make the walk a special experience for young (and old) explorers. Lake Freilingen is also an ideal place for an excursion. It is embedded in the beautiful Eifel landscape and offers activities on and around the water, such as diving, swimming, rowing, fishing or a hike.



Contact: Tourist information Blankenheim

Ahrstr. 55-5
53945 Blankenheim
Phone +49 (0)2449 87/222
touristinfo@blankenheim.de
www.blankenheim.de



Nature and history

Experiences for all senses in the Eifel municipality of Nettersheim



Eifel Nature Centre

Whether on your own, on a guided hike or in a guided programme: you can experience a lot with us! No matter whether you come to us for just a few hours, a day or for a holiday lasting several days in the beautiful nature experience village of Nettersheim: It's worth it.

Understanding the forest and nature, discovering new things, enjoying silence, good air and evening darkness, sharpening your eye for the small but important things in life: We offer fun and recreation for the whole family.

We are working hard to be able to reopen the Eifel Nature Centre, which was destroyed on the ground floor during the flood in July 2021, in spring 2023. Here, in addition to the tourist information office, which until the opening will be housed in the „House of Fossils“ (extensive fossil collections here), two minutes' walk away, at Bahnhofstraße 50, you will find a varied exhibition landscape, an impressive coral reef aquarium and a museum shop. We are happy to provide tips for short and long hikes, sightseeing and overnight accommodation.



The Archaeological Landscape Park Nettersheim is located directly on the Agrippa Road from Cologne to Trier. In ancient times, a Roman settlement was located here in an impressive landscape. After extensive excavations, the results were made visible at eight experience stations in partial reconstructions on the approx. 4 km long circular path. You will find a matronly sanctuary, a small fort at the Urft stream, stripe houses and much more. The Roman Road Information Centre at the starting point, the Eifel Nature Centre, and the archaeological exhibition on the upper floor will be reopened as soon as possible. Discover the treasures of the past on research days for families, in activity programmes for school classes and groups, and in culinary offerings. A special highlight is the annual Roman camp at Steinrüttsch with activities for young and old.

Contact: Team Naturzentrum Eifel

Re-opening planned in spring 2023
 Urftstraße 2-4, 53947 Nettersheim
currently: Tourist-Info in the „House of Fossils“,
 Bahnhofstraße 50, 53947 Nettersheim
 Phone +49 (0)2486/1246
 naturzentrum@nettersheim.de
 www.naturzentrum-eifel.de

Opening hours:

Monday to Sunday 10.00 a.m.-04.00 p.m.
 December to February:
 Mon-Fri 11.00 a.m.-02.30 p.m.,
 Sat & Sun 10.00 a.m.-04.00 p.m.



Themed hiking trails such as the Archaeological Landscape Park and the Dandelion Adventure Trail start at the Eifel Nature Centre. From March to November, great programmes for young and old take place at the Eifel Nature Centre at weekends and during the holidays.

City Outlet Bad Münstereifel

Shopping experience in the historic city centre of Bad Münstereifel.



Experience shopping for over 50 fashion & lifestyle brands in the historic city centre of Bad Münstereifel.

Nestled in the centre of the medieval city, surrounded by the castle, museums and Eifel panorama, over 50 fashion and lifestyle brands showcase their ranges from the fields of fashion, sports, outdoor living, shoes, accessories, children's clothing, lifestyle and cosmetics over a retail area of 16,000 square metres.

These include the outdoor specialists Jack Wolfskin, Salewa and the shoe expert Salamander. Discounts of 30 to 70 percent on previous year's and sample collections from fashion brands such as Bugatti, Camel Active, Wellensteyn, Betty Barclay, Tom Tailor, Mustang or Puma, sustainable fashion from National Geographic, home and kitchen accessories from WMF, Home & Cook or Möve as well as natural healing products from Kneipp.

The finest chocolate at the Lindt Shop attracts numerous tourists and day trippers every day. Along the 800-metre romantic pedestrian zone between Orchheimertor and Werther Tor, visitors can browse through the shops of the City Outlets as well as the local shops for fashion and much more.



Listed buildings, traditional dining options, an extensive cultural program and the idyllic atmosphere of Bad Münstereifel make every visit a unique experience for savvy shoppers.

Fantastic events and pure shopping pleasure come together in the picturesque medieval centre of Bad Münstereifel making it an attractive destination.

The location of the City Outlet Bad Münstereifel makes it an ideal destination for excursions and holidays. The City Outlet Bad Münstereifel is unique as an inner-city outlet in the centre of a medieval and picturesque city. There are several centrally located small museums within walking distance. In a nutshell: The City Outlet Bad Münstereifel offers shopping pleasure with added value.

Contact:

City Outlet

Bad Münstereifel GmbH

Marktstraße 18

53902 Bad Münstereifel

Phone +49 (0) 22 53/31 700-00

info@co-bam.de

www.co-bam.de



Holiday destination - magnetic effect

Welcome to the Hocheifel-Nürburgring holiday region!



© Dominik Kertz

Are you one of those people who are looking for something special? Then the Hocheifel-Nürburgring holiday region is the right place for you.

The **Nürburgring**, THE destination for motor sports fans and families, and one of the most fascinating and famous race tracks in the world, stands for speed and pure fascination. The Ring is attractively embedded in the region, which offers a multitude of highlights:

With a unique nature, characterised by numerous interesting facets such as **volcanism and historic castles** and palaces.

Numerous hiking and cycling trails, most of which are certified, invite you to explore.

The **Eifelleiter** and the **AhrSteig** are ideal for multi-day hiking tours and the **Radare- na am Ring** (tracks and trails around the ring) makes mountain bikers' hearts beat faster. There are also excellent cycling routes and discovery tours for leisure cyclists and cycling-loving families along the **Ahr cycle path** in the upper Ahr valley.



A visit to the castle ruins and the 100-year-old **Kaiser-Wilhelm-Tower** on the „**Hohe Acht**“, which at 747 metres above sea level offers a magnificent panoramic view, is well worthwhile.



© Dominik Kertz

The good Eifel air gets body and soul going - no matter where the path takes visitors, the fascinating towns, the warm hospitality and the breath-taking views enchant every visitor. In a nutshell, the Hocheifel-Nürburgring region stands for **switching off and relaxing, for enjoying and experiencing**.

Are you curious? Comprehensive information on the topics of leisure activities, accommodation, food and enjoyment as well as current event information can be found at www.hocheifel-nuerburgring.de.



CONTACT:
Tourist-Information
Hocheifel-Nürburgring,
 Kirchstraße 15-19, 53518 Adenau
 Tel.: +49 (0)2691 / 305122
tourismus@adenau.de
www.hocheifel-nuerburgring.de

Discover the legend in you!

On a journey of discovery with the recreational activities at the Nürburgring



On board the various simulators and rides, visitors to the Nürburgring will get to explore the legends behind the track. Here, racing enthusiasts of all ages are chasing the best lap times or changing tyres at record speed at the Formula 1 Pit Stop Show.

Another highlight of the Motorsport Experience Museum is the spectacular and lifelike 24-hour race in 4D, where visitors can enjoy one of the biggest motorsport events in the world from a very special perspective.

The multi-media „Green Hell“ theatre promises an experience for all ages that will give you goosebumps. Here, visitors get a complete experience of the history of the „First Mountain, Race and Test Track“, including the sounds and the smells, starting with the construction of the Nordschleife.

As part of Wolfgang Graf Berghe von Trips' 90th birthday celebrations, the exhibition area „Knight, Rider, Racer“ was opened in May 2018. Visitors can learn about the personal side of the legendary racer.

The ring cinema is also one of the Nürburgring attractions. It plays cutting-edge films on one of the largest 3D cinema screens in the region, as well as offering comfortable seating with plenty of legroom.

The backstage tour opens doors that are normally closed to the public. You can visit the pit lane, podium, paddock and media centre.



During the one-and-a-half-hour tour behind the scenes of the legendary racetrack, no secret remains hidden and no questions are left unanswered.

If you just want to take a quick look at the pit lane and the starting / finish line, you can do this from the grandstand.

Visitors of all ages can battle for first position and feel the thrill of real racing on the karting track. There are no exhaust fumes but the karts are fitted with the sound experience of real racing car and provide real e-motions with their powerful electric drive along the 400-metre indoor track.



CONTACT:
Nürburgring 1927 GmbH & Co. KG
 info°center
 Otto-Flimm-Str., 53520 Nürburg
 Tel.: 0800 20 83 200
 info@nuerburgring.de

OPENING TIMES:
 The daily opening times are listed at www.nuerburgring.de/oeffnungszeiten



Bad Münstereifel

Where history comes alive and breathing becomes an experience



A historic town centre draped in the green hills of the Eifel, a densely wooded urban area with over 50 active villages, a rich shopping offer and plenty of culture in the midst of nature.

This is **Bad Münstereifel**, the only town that bears the Eifel in its name. In the listed old town you will find picturesque groups of specialist shops, a romantic townscape with modern shops, buildings steeped in history and many cultural offerings. You can experience history in the small, lovingly arranged museums or have it told to you on a guided tour of the town. Special cultural highlights are offered by the Wallgraben concerts and the Kulturhaus theatre. After a cultural or shopping experience, cafés and restaurants invite you to relax and linger. Those who like sports will be drawn to the Bad Münstereifel forest.

Whether as a **hiker on foot or on horseback or as a mountain biker on a bike** - the forest invites you to exercise in the fresh air. Pilgrims of St. James welcome! The routes from Cologne and Bonn to Trier meet in Bad Münstereifel. The Eifelbad with its 122-metre slide and the outdoor pool, which is heated all year round, is known for being extremely family-friendly.



Once you have discovered Bad Münstereifel, you will want to come back to discover new facets of the young Kneipp spa.



Bad Münstereifel is worth a visit at any time of year.

Event dates 2023:

- 29-30 April Spring Market
- 12-13 May WDR4 Wanderschön
- 13 May Roman Road Experience Area, bus tour with a stop at the Roman Lime Distillery
- 21 May Herb Day in Bad Münstereifel and Nettersheim
- 14-16 July Fair
- 12-13 August Family Festival
- 02-03 September Michael's Market
- 07-08 October Autumn Festival
- 13 November St. Martin's procession in the city centre
- 24 November Opening Christmas Market
- 02-03 December Festival of Lights
- 09 December Long Night

All information without guarantee. Please enquire at the contact address provided whether the dates can actually take place.

Contact:

Spa Administration / Tourist Info

Kölner Str. 13
53902 Bad Münstereifel
Phone +49 (0)2253/542244
touristinfo@bad-muenstereifel.de
www.bad-muenstereifel.de

Himmeroder Hof in Rheinbach

Glass Museum, Nature Park Centre and
Römerkanal Information Centre



Rheinbach Glass Museum, Open Museum Workshop, Workshops, Museum Shop

What kind of glass was produced by which craftsmen for which customers in Bohemia over the last 400 years? What does Count Kinsky have to do with Bohemian glass? Who were the home carriers and why were they absolutely necessary for the smooth running of production? How did Rheinbach become a glass city after the Second World War? Can glass be made into modern sculptures?

The permanent exhibition of the Glass Museum provides surprising answers to these and many other questions. And if you're looking for an unusual gift to round off your visit, you're sure to find what you're looking for in the chic museum shop with Rheinbach glass. There, crime fans can buy the case file for the Rheinbach crime trail „Scherben bringen Unglück“ (broken glass brings misfortune) and start directly on the puzzle adventure across the city.

www.krimi-trails.de

Contact:

Glasmuseum Rheinbach

Tel. +49 (0)2226/917501

glasmuseum@stadt-rheinbach.de

www.glasmuseum-rheinbach.de



The Römerkanal Information Centre is in the middle of Rheinbach, at Himmeroder Hof, along with the Glass Museum and the Nature Park Centre Rheinland. It is also conveniently located at the centre of the Römerkanal hiking trail. It contains everything you need to know about the Roman Canal and the hydraulic engineering systems built by the Romans. An exciting exhibition with guided tours and educational program explains the techniques the Romans used.

In addition to this, there is also information about the Roman Canal hiking trail and the highlights in the areas it runs through. The Römerkanal Information Centre regularly hosts events. All the dates for future events are listed at www.roemerkanal.de. The information centre is wheelchair-friendly and admission is free. The entrance to the building is in the Himmeroder Hof Nature Park Centre.

Contact:

Römerkanal Infozentrum

Tel. +49 (0)2226/917554

roemerkanal@stadt-rheinbach.de

www.roemerkanal.de

City of Rheinbach - Culture, Museum and Tourism

Himmeroder Wall 6 · 53359 Rheinbach

Opening times: Tue-Fri 10am-12pm, 2pm-5 pm · Sat / Sun 11am-5pm



Euskirchen - City with a face

Euskirchen has a lot to offer



Shopping and feasting in a revamped city centre. Anyone visiting the district town of Euskirchen will find many opportunities to enjoy delicious food on a tour of the pedestrian zone. There are also a number of stops for a leisurely shopping tour. Many shops have just opened and attract shoppers with their modern and perfectly designed premises. You can round off your day in a historical ambience on the beautiful Alter Markt square.

Euskirchen also has a number of historical sites to visit and explore. The districts of the district town in particular have a lot to offer. Between Stotzheim and Kirchheim, for example, you can admire the ruins of Hardt Castle on a walk in the woods, or in Kreuzweingarten you can take a stage on the Roman Canal hiking trail along the historical evidence of the Romans.

In addition, Euskirchen offers two art miles where open-air works of art are exhibited and a colourful cultural programme from comedy to classical music is offered.

Contact: Rathaus Euskirchen – Tourismusbüro

Kölner Straße 75 · 53879 Euskirchen
Tel.: +49 (0)2251/14226
info@euskirchen.de
www.euskirchen.de



The Euskirchen town museum offers its guests, young and old alike, a multimedia and interactive exhibition in the modern ambience of Euskirchen's Kulturhof. Numerous exhibits illustrate the most diverse facets of history and everyday life in this town.

A special highlight is the historical town model. It enchants visitors with its filigree forms, delicate colours and imposing size..

In the exhibition area „Heimat Stadt Euskirchen“, contemporary witnesses talk about everyday life in Euskirchen. Special exhibitions with historical and current references to topics from art and culture complete the offer.



Stadtmuseum Euskirchen

Wilhelmstraße 32-34 · 53879 Euskirchen
Tel.: +49 (0)2251/65074-38
museum@euskirchen.de
www.kulturhof.de/museum

opening hours

Tue-Fri 3pm-6pm, Sat 11am-3pm,
Sun 11am-6pm

For groups also by appointment.

All rooms of the museum are connected to the reach elevator.



Machines and animal fashion

LVR industrial museum in Euskirchen-Kuchenheim



LVR-Industriemuseum, Willi Filz

The LVR Industrial Museum presents a complete cloth factory from around 1900 in its permanent exhibition - and even lets the old machinery run again. After the closure in 1961, the factory fell into a long slumber. The factory ensemble has been completely and authentically preserved on site down to the last detail and today conveys the true-to-life experience of the working world 50 or 100 years ago. One has the feeling that the workers could come back from the weekend at any moment. A special attraction is the demonstration: During every guided tour through the museum, the most important spinning and weaving machines are shown in full action. Once a month the steam engine can also be admired in operation.

Special exhibition „Fashionable Raids - Of Luxury, Pleasure and Suffering. 1800 to today“ 5.3.2023 to 7.1.2024

Supple furs, exotic feathers, iridescent pearls - people have always been fascinated by the beauty of the animal world. The rarer a fur or shell, the more it was coveted to adorn oneself with. Since the conquest of non-European continents and even more so with the beginning of industrialisation, animals all over the world have been hunted, killed, exterminated, their skins, carapaces or teeth turned into lucrative commodities to be used for fashion. Despite all protests, Despite all protests, despite animal and species protection: animal materials still shape current fashion trends. The exhibition



LVR-Industriemuseum

shows original items of clothing and accessories made of animal materials, for example furs, feathers, pearls, mother-of-pearl or ray skin, as well as pictures and film clips from the time. Interactive stations give visitors the opportunity to experience and explore the materials themselves. The exhibition is complemented by a presentation of paintings by the Berlin artist Oliver Mark from the series „Natura Morta“.

Contact: LVR-Industriemuseum

Tuchfabrik Müller, Carl-Koenen-Str. 25b
53881 Euskirchen-Kuchenheim
Tue-Fri 10 a.m. – 5:00 p.m.
Sat-Sun 11 a.m. – 6:00 p.m.
The cloth factory can only be visited with a guided tour.

Guided tours of the cloth factory:

Tue-Sat 11:00 a.m. – 1:00 p.m./ 3:00 p.m.,
Sun 11:00 a.m./12:00/1:00/2:00/3:00/4:00 p.m.

Steam engine in operation:

Every 2nd Sunday of the month 1:30 p.m. – 4:30 p.m.

Info and bookings:

kulturinfo rheinland 02234 9921555 or
info@kulturinfo-rheinland.de
www.industriemuseum.lvr.de

A special tip

Behind the museum, a large playground invites families to linger. On Sunday afternoons, the cafeteria serves not only coffee but also delicious waffles.



LVR-Open Air Museum Kommern

Rhineland State Museum of Folklore



© Tourismus NRW e.V.

Out to the museum! The journey through time at the LVR Open-Air Museum Kommern in the Eifel takes you 500 years back in time. The smell of freshly baked bread hits your nose. Geese and chickens run excitedly over the cobblestones. The loud banging of the hammer on the anvil emanates from the forge.

All year round, visitors can experience how people once lived and worked in the Rhineland. For this purpose, historical houses in the Rhineland were dismantled and rebuilt on the 100-hectare museum grounds. Simple smokehouses, typical of the Westerwald in the 16th century. Half-timbered buildings from the northern Eifel, but also farms and stables where people in the Lower Rhine and Bergisch region lived with pigs and horses under one roof. The Market Place Rhineland brings the 1950s to the 1990s back to life.

Contact: LVR-Freilichtmuseum Kommern

Rhenish Regional Museum of Folklore

Phone +49 (0) 2443/99 80 0

Eickser Straße, 53894 Mechernich

kommern@lvr.de; www.kommern.lvr.de

Opening hours: Open 365 days a year!

Free admission for all on the 2nd Friday of every month. 1 Mar. - 31 Oct. from 9 a.m. - 6 p.m.

1 Nov. - 28 Feb. from 10 a.m. - 4 p.m.

Admission prices: children under 18 years are free; Adults € 9.50, reduced € 7.50

Public transport discount: €1 discount on regular admission, if you travel by public transport.

Roman Spa Zülpich – Museum of Bathing Culture

Experience the cultural history of the Bathing in a unique exhibition



© Dominik Schmitz / LVR-ZMB

Europe-wide one of a kind!

The Zülpich Museum invites you on a journey through 2000 years of bathing culture, from the Romans to today. The core-piece of the museum is the original Roman thermal baths from the 2nd century. They are the best preserved facility of its kind north of the Alps.

On discovery tour with Jonah and Julia

Children can discover the history of bathing accompanied by the comic figures Jonah and Julia taking part in a theme-related rally. The whole family can enjoy interactive stations appealing to all senses: the smell of antique perfume and herbs popular with the Romans can be sampled at the fragrant wall, Roman parlour games e.g. Round Counter Nine Men's Morris can be tried at the gambling table.

Films and audio-guide stations provide a multimedia introduction into the subject. This turns the visit of the museum into a varied and exciting discovery tour.

Contact: Roman Spa Zülpich – Museum of Bathing Culture

Andreas-Broicher-Platz 1, 53909 Zülpich

info@roemerthermen-zuelpich.de

Phone +49 (0)2252/83806 0

www.roemerthermen-zuelpich.de

Entrance free children under 18!

Opening hours:

Tue.-Fri. 10:00 a.m. – 5:00 p.m. Sat., Sun. and holidays 11:00 a.m. – 6:00 p.m.



Seepark Zülpich

* Family Holiday * Fun in the Water * Relaxing *



4,000 square metres of sandy beach with a pirate climbing ship, giant bouncy cushions, giant show jumps, water playground, adventure golf, beach volleyball, pedal boat rental, a large aqua park, the new climbing mountain, the only flying fox park of its kind in the Cologne-Bonn-Aachen city triangle and much more await you at Seepark Zülpich. Feel like you are on holiday with us and experience a wonderful family day on our 20-hectare site with its extensive play and action areas. The Seepark Zülpich is designed to be barrier-free and suitable for children's prams and pushchairs.

Events for the whole family: cheerful and colourful events for all generations ensure that there is never a dull moment. Experience more than 30 attractions on an area of over 9,000 square metres at the big „Jump in the Park“ bouncy castle festival! Stroll through the large autumn market or experience evening beach culture concerts in front of a fascinating lake backdrop. Be enchanted by the fire-breathing dragon Fangdorn at the „Dragon Festival“!

Children's birthday party: Little guests really big! Whether it's a flying fox, a witch's birthday, a pirate party or golf fun: celebrate an unforgettable children's birthday at Seepark Zülpich! We have put together exciting programmes for your birthday child and his or her guests for a grandiose day of honour!



Fotos: © Seepark Zülpich

Make your garden dreams come true: You will find the region's only high-quality model garden exhibition in our „Rhenish Centre for Garden Culture“. Get inspiration for your personal balcony, terrace and garden design! Or enjoy the seasonal change of flowers in all its splendour in our gardens!

Opening hours:

From 01 March to 31 October we are open daily for you.

www.seepark-zuelpich.de/oeffnungszeiten

Admission prices:

You can find the current admission prices at www.seepark-zuelpich.de/eintrittspreise



SCAN ME

Contact: AmWassersportsee 7, 53909 Zülpich

Free parking spaces and a mobile home harbour for which a fee is charged are located directly on site.

Further information under

Phone: +49(0)2252-52345 and on the internet at www.seepark-zuelpich.de and www.facebook.com/seeparkzuelpich



Benedictine Abbey Maria Laach

A welcoming community



A popular excursion destination is the **Benedictine abbey of Maria Laach**, located directly on Lake Laach in the largest nature reserve in Rhineland-Palatinate. The abbey was founded at the end of the 11th century by Count Palatine Heinrich von der Pfalz. Its church, consecrated in 1156, is one of the most important Romanesque buildings. Today the abbey is home to about 30 Benedictine monks who live here according to the Benedictine rule of „ora et labora“. It is not only the abbey church that invites visitors.

The large nursery, the book and art shop, the art smithy, the monastery shop or the Seehotel Maria Laach with restaurant and accommodation as well as the Villa Reuter as an exhibition of the carpenter's workshop are also worth seeing. Products from Maria Laach's other businesses, such as the art publishing house, ceramics workshop, monastery fishery and fruit-growing, are available to the public. Products from organic farming are available in the farm shop at the visitors' car park. **Take a walk around Lake Laach or a boat trip** to explore the beautiful natural surroundings. There are various places to stop for refreshments. Various events throughout the year offer visitors a varied programme for the whole family.

CONTACT: Benedictine Abbey Maria Laach

56653 Maria Laach - Tel.: +49 (0)2652 59-0
 abtei@maria-laach.de
 www.maria-laach.de

Bitburger Brewery

Where Bitburger is at home Experience beer with all your senses



The brewery of Bitburger beers moved to the south of the Eifel town in the 1980s, but the brewery is still present in the heart of the town today. The historic brewery building, whose foundation walls date back to the middle of the 19th century, now accommodates the Bitburger World of Experience.

Here, visitors can experience the **historic brewhouse** with its bright copper kettles up close, as well as the old boiler house with its very high ceilings and the remains of the almost 100-year-old chimney. On a guided tour they can see, hear, feel, smell and taste how beer is brewed and what makes Germany's No. 1 draught beer so special.

The approximately **one-hour tour** ends at the old boiler house, where guests can personally convince themselves of the quality of Bitburger beers. This is where the spacious Bit Lounge with its eye-catching oval bar was created, undoubtedly a highlight of the tour.

Admission to the world of experience costs 9 Euros for adults. This includes the guided tour and 2 free drinks on site. With 3 additional drink vouchers, Bitburger invites you to the surrounding restaurants in the city.

CONTACT:

Bitburger Erlebniswelt

Phone +49 (0)6561/14-2497
 erlebniswelt@bitburger.de
 www.bitburger.de/besuch



GrenzGenuss

Ardenner Cultur Boulevard - worlds of experience to marvel at,
shop and enjoy



PLEASURE FOR THE SENSES

The Ardennes Cultur Boulevard, located directly on the German-Belgian border, is an interesting and varied destination for the whole family. Spend pleasant, relaxing hours in a cosy atmosphere with your loved ones, whatever the season. Sundays and public holidays are open for business.

We look forward to your visit!

ArsKRIPPANA Let yourself be enchanted on more than 2500 sq m with nativity art and handicrafts from all over the world. Enjoy the quiet grace in the fairytale ambience of one of the largest collections in Europe.

ArsFIGURA Stroll through the alley of the 19th century and discover an animised hustle and bustle of the period. Let yourself be inspired on an impressive journey through an enchanting world, with valuable collections of antique, modern and mechanical dolls.

ArsTECNICA Discover tiny worlds in a large H0 model railway exhibition. Additional exhibition: Historical post-war exhibition on the border area „Losheim 1945 - 1958“ with original parts from this period.

Please note special opening hours!

SPECIAL EXHIBITIONS can be found at:

www.arskrippana.net

ArsMineralis Relaxing sounds and scents, glitter and sparkle fill the room - immerse yourself in the healing world of precious stones. On over 500 square metres in a fascinating selection of beautiful and exquisite things. Jewellery, mine-



erals, natural remedies, gifts, Buddhas and much more. Info: www.arsmineralis.net

Ardennes border market AD Delhaize

Here you can find delicious shopping, fresh fruit and vegetables and of course our Belgian specialities such as pralines, abbey beers or the famous Ardennes ham, top French wines and coffee at very reasonable prices.

Bistro Old Smuggler Enjoy our country specialities with your loved ones. Good coffee and cocoa, Belgian cakes and tarts or chocolate delicacies: we will be happy to spoil you with hearty delicacies from the Eifel and the Ardennes.



CONTACT: Ardenner Cultur Boulevard

Prümer Str. 55 · D - 53940 Losheim/Eifel

Phone +49 (0) 6557 / 9019420

Infos: www.grenzgenuss.net

AD Delhaize · Belgian Supermarket:

und Bistro Old Smuggler: täglich 8-18 Uhr

Exhibitions ArsKRIPPANA u. ArsFIGURA: daily from 8 a.m.-6 p.m., closed on Mondays

ArsTECNICA opening:

www.arstecnica.de



Gallery against the „right“

„Eifel Kunst“ in Gemünd for freedom and democracy



„No!“ to right-wing extremism, racism and violence: The gallery „Eifel Kunst“ is a gallery against „right-wing“ and regularly presents theme-related exhibitions, lectures, readings, concerts and film screenings. Furthermore, the Eifel Art Gallery offers projects against war, for peace, for integration, human rights and human dignity as well as for intercultural and interreligious dialogue.

„Eifel Kunst“ offers areas in which people can display their diversity and thereby gives culture-oriented artists the opportunity to have a voice and to speak up against exclusion, against racism and against violence. The „Eifel Kunst“ gallery is filled with artistic statements about democracy and freedom, which transform it into a place of diversity and encounters. **The works of art are like obstacles on the path to oblivion.**

Contact: Galerie „Eifel Kunst“



Schleidener Straße 1
53937 Schleiden –
Gemünd
Phone +49(0)1573
6941876
www.eifel-kunst.de



Opening hours:

see website and
by appointment

Visitors Mine „Grube Wohlfahrt“

All year round attraction for young and old in the National Park



The „Lead Ore Mine Wohlfahrt“ is located near Hellenthal-Rescheid. It was operated from the end of the Middle Ages until shortly before the beginning of the 2nd World War. Today the sub-surface working world of past generations is accessible in the form of a visitor mine.

No day of rest! The daily guided tours depart every day from the „pit house“ of the Rescheid mine, with shop and small exhibition, down a convenient staircase to the spacious „depths of the mine“. The pure, pollen-free mining air has a year-round temperature of only 8° C! Sturdy shoes and warm clothes are therefore recommended.

Explore the mysteries of inanimate nature!

Visitors to the mine can also admire the colorful mineral developments of the petrified beach of Eifel primordial lake. A visit to the underground world is also a special experience for children. Original preserved rock drawings of miners dating back to the 19th Century will even convince the sceptics: there are once dwarfs working in the „Grube Wohlfahrt“!

Contact: Visitors Mine „Grube Wohlfahrt“

Aufbereitung II Nr. 1 · 53940 Hellenthal
Heimatverein.Rescheid@t-online.de
www.GrubeWohlfahrt.de

Guided tours for individuals

Daily from 11.00, 14.00 and 15.30 hrs Groups of 6-8 persons are advised to book in advance! Special programme for larger parties of visitors. For information Phone: 02448-911140 (daily between 10.30 -16.00 hrs)



Daun Wildlife and Adventure Park

Fancy exotic animals, nature, fun and games? Then a trip to the Daun Wildlife and Adventure Park is just the right thing for you!



In the heart of the Volcanic Eifel lies one of the most fascinating natural areas in Germany, the Daun **Wildlife and Adventure Park**. In a magnificent mixed forest covering 220 hectares, visitors can expect many surprises on an 8 km long car safari.

Experience red deer, fallow deer, sika deer, wild pigs, mouflons, llamas and wild horses, Came-roo sheep, aurochs and bison in the wild. The animals can be observed, photographed and fed from six viewing platforms.

Another attraction is the accessible, **six-hectare monkey gorge**, where a lively colony of 45 free-living Barbary macaques has found a new, species-appropriate home. Nearby is the bird of prey station, where the falconer shows visitors the flight behaviour of his birds during daily flight demonstrations (except on Fridays). In addition, the 800 m long summer toboggan, run in front of the Wildlife and Adventure Park, offers an exciting experience for young and old.

A very special highlight for children is a giant carpet slide, the large adventure playground with a gigantic climbing mountain 5.50 metres high, two huge bouncy cushions and many other attractions.

In the adjacent „mini animals' farm“, which is home to mini pigs, rabbits, squirrels, alpacas and emus, sheep and goats, meerkats and catt-



© Andre Jletz

le, among others, children can even get up close and personal with the animals!

From 2018, a new highlight awaits you at the Wildlife & Adventure Park Daun: as of this year, you can experience our kangaroos up close in their large walk-in enclosure.

The café-restaurant „Waldhaus Hirschberg“ with its hearty cuisine offers the opportunity for a snack. At our monkey's gorge you now also have the opportunity to visit our cosy bistrotto with sun terrace and a playground for the children.

CONTACT:

Wild-und Erlebnispark Daun

Wildparkstr. 1 · 54550 Daun

Tel. +49 (0)6592-3154

Fax 06592-957405

www.wildpark-daun.de

erlebnispark-daun@t-online.de

OPENING HOURS

15.03-15.11 from 10.00 am - 6:00 pm

(Last admission 5:00 pm)

16.11-14.03 from 10.00 am - 4:00 pm

(last admission 3:00 pm)



Recreational fun for the whole family

Recreation and winter sports area
„Weisser Stein“



Hollerath and Udenbreth „Weißer Stein“ (610–690 metres above sea level) are the most famous winter resorts in the region on the left banks of the Rhine. In Udenbreth „Weißer Stein“ there is a downhill slope with a T-bar lift up to 550 m long and a toboggan run with toboggan lift up to 350 m long. Cross-country skiers will find a total of five trails, one in Udenbreth, one in Hollerath and three in Losheimergraben. In addition to a sports field, the „Weißer Stein“ leisure complex offers a spacious children's playground with a bouldering wall.

The „Weißer Stein“ leisure complex also has a spacious playground for children next to a sports field. The general public can use the covered barbecue area, which is integrated into the playground, and, with further covered seating options it is the ideal place for a family outing. Another highlight is the observation tower with a ridge height of 30 metres, with the installed „Eifel View“ and information on the different viewing angles. The „Weiße Stein“ area also offers the best conditions for stargazing.

Tourist information and Hellenthal National Park Info Point

Rathausstraße 2 • 53940 Hellenthal
Phone +49 (0)2482/85 115
tourismus@hellenthal.de,
www.hellenthal.de

winter sports weather

Information about the snow conditions and opening times can be found at www.hellenthal.de or the snow line: 02482- 85 200.

Olefufer leisure facility Hellenthal

Play and leisure facility
for all ages.



The **Olefufer leisure facility** in the heart of Hellenthal is a play and leisure facility for all ages. The bed of the Olef stream is accessible via a flight of steps with seating possibilities and invites visitors to take a break by the water. In addition to the classic play equipment for swinging, climbing, sliding and balancing, the little visitors will find a trampoline, a shovel excavator, a red wooden play train, a climbing spider and a water playground to let off steam.

There is also outdoor “fitness equipment” for both young and old alike.

A red wooden house in the shape of a wagon was built in the style of an old fashioned railway station that was in this area a long time ago. This can be rented through the Hellenthal local council for smaller private parties. All the little visitors can also let off steam and play freely in the separate toddlers' playground. In addition to the children's activities, a landscape lounge and a covered seating area invite you to linger.

Tourist information and Hellenthal National Park Info Point

Rathausstraße 2
53940 Hellenthal
Phone +49 (0) 2482/85 115
Fax +49 (0) 2482 / 85 114
tourismus@hellenthal.de
www.hellenthal.de



Kart track Dahlemer Binz

An experience for the whole family!



With us you will experience motor sport up close! The feeling of being in your own racing car!


No matter whether you are a first-time kart driver or already a practised high-speed racer. We have the right kart for everyone.

From 130 cm height and an age of 8 years, even the youngest can get a taste of racing. For even younger children, handicapped persons or for every co-driver, **twin karts** are also available, with which you can experience the driving fun for two. For ambitious drivers, we keep our fastest karts ready for pure racing feeling. Group events with exclusive use of the track are possible from 8 people onwards by prior arrangement. Our 1122-metre-long track guarantees a wonderful driving experience against a fantastic Eifel backdrop.

Reservations by telephone are recommended, especially during the holidays. Please note the general information on our home page and the current Corona protection measures.

Contact:

Kartbahn Dahlemer Binz GmbH
Dahlemer Binz 80 · 53949 Dahlem
Tel.: +49 (0)2447/1866
www.kartbahn-dahlemer-binz.de

 From 15 March to 31 October daily - except Mondays - from 11.00 a.m. to 7.00 p.m. (closed in case of persistent rain)

D5

Take off at the Dahlemer Binz Airfield

Experience and explore at the highest place in the municipality of Dahlem



At the region's largest airfield on the **Dahlem Binz** plateau, aviation fans have a wide choice: **Take off to the skies silently in a glider**, explore the great Eifel landscape from above on a sightseeing flight in a motorised plane or **gyrocopter**, dare a **tandem parachute jump** from a height of 4,000m or take a zeppelin or balloon ride.

Also the companies and flying clubs at the airfield provide you possibilities for getting more intensively involved in this hobby. The Air Academy flying school offers an introduction to powered flight, the largest parachute jumping base in NRW, Sky-Fun, provides training in parachute jumping, the numerous gliding clubs are happy to welcome new team members and a gyrocopter licence can also be obtained.

For aircraft owners, the hangars on the Dahlemer Binz offer a popular base.

Those who don't want to take off into the air themselves can watch the flying action from the **restaurant terrace**. Action for amateur racers is offered by the neighbouring **Dahlemer Binz go-kart track**. A quiet alternative is the **hike** around the plateau, through the Schmidtheim forest and past **Schmidtheim Castle** and to the unique **Generations Park**.

www.dahlemer-binz.de
www.kartbahn-dahlemer-binz.de
www.schloss-schmidtheim.de



D5

Devil's Gorge & Dinosaur Park

From an ancient seabed to a journey through
the history of the earth



This landscape has been shaped by elemental forces: Rock towers, gorges and crevices, mighty trees whose roots cling to the rocks, deeply incised river valleys and fantastic views.

The adventurous sandstone rock world in the south of the Eifel on the Luxembourg border fascinates children as much as adults. Right in the middle: Devil's Gorge.

The hiking trails through the famous gorge are called **Devil's Paths**, and a premium route of the deluxe **NatureHikingPark** is also named after it. If we humans had existed 200 million years ago, we would have packed our bathing suits and flippers for the excursion to the southern Eifel. Because, if you walk through the Devil's Gorge, you're walking on an ancient seabed. What animals would we have encountered there, what did the landscape look like, what was the climate like back then? Answers to these questions can be found in the **Dinosaur Park**, just a few steps away from the Devil's Gorge.

Here you can marvel at the creatures that populated the earth back then, in true-to-life reconstructions. We learn why the Dilophosaurus with its striking crest and pointed teeth was called the „Devil's Gorge Saurian“.

„We stand in amazement in front of the 23-metre-long Diplodocus, whose babies are just emerging from their eggs, and look up at the Tyrannosaurus Rex on its rock.



The journey through the history of the earth takes **more than 600 million years** in the large prehistoric park with around 180 models, including mammoths and Neanderthals and even future animals.

Science can be experienced live in the **Paleo-Lab**, the fossil preparation centre: Here, visitors can watch a taxidermist carefully working original dinosaur bones and the remains of other extinct animals and plants out of the rock. If you want to try out for yourself how much skill and patience you need to uncover real fossils, the park's research camp is the right place to be.

CONTACT:

Dinosaur Park Teufelsschlucht

Nature Park Centre Teufelsschlucht
Ferschweilerstraße 50 | 54668 Ernzien
Tel.: +49 (0)6525 / 93393-0
www.dinopark-teufelsschlucht.de
www.teufelsschlucht.de

OPENING HOURS

Dinosaur Park:

12 Mar-6 Nov 2022 daily 10am-6pm.
(for registered groups daily from 9 am)

Nature Park Centre:

12.3.-6.11.2022 daily 11 am 6 pm



Look for balance – Book nature

Directory of hosts 2023



**Gastgeber
Nationalpark
Eifel**



Eifel National Park Hosts...

... feel it their duty to uphold the philosophy and goals of the national park.

... fulfill the given quality and environmental criteria for ecological, economical and social sustainability.

...regularly participate in further training relating to the Eifel National Park.

...inform their guests about the numerous possibilities for active enjoyment of nature in the national park, as well as about the ideas, goals and rules of the conservation area.

Administrative Office Gastgeber Nationalpark Eifel

Seeufer 3

52152 Simmerath-Rurberg

Phone: +49 (0)2473. 9377-17

Fax: +49 (0)2473. 9377-20

info@nationalpark-gastgeber.eu

www.nationalpark-gastgeber.eu

Bookings Hotline

+49 (0)6551. 9656-0

www.eifel.info

Enjoy your stay

**Your Gastgeber Nationalpark Eifel
(Eifel National Park Hosts)**



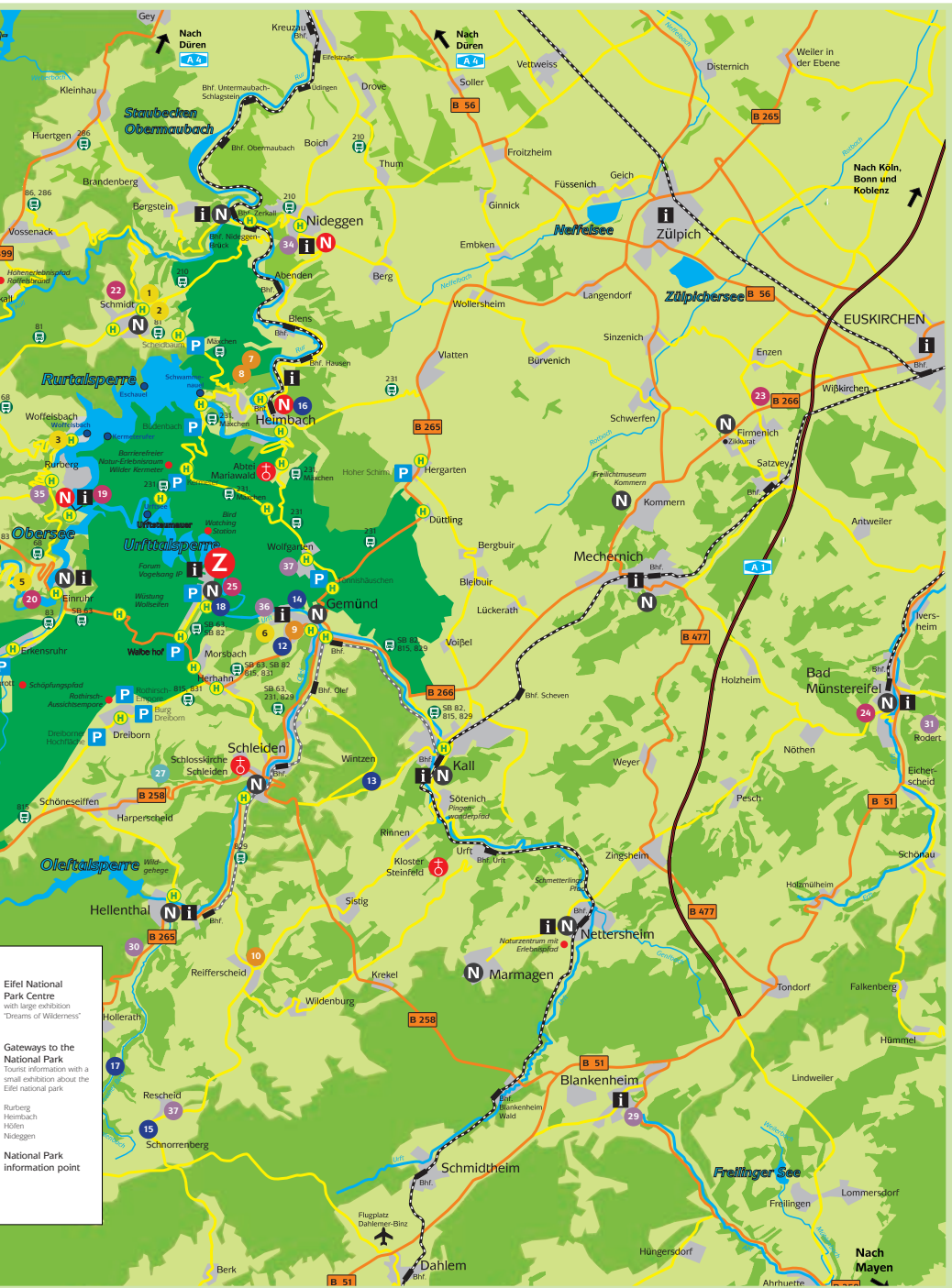
Detailed information regarding certified national park hosts and offers of "barrier-free accredited" companies is available at www.nationalpark-gastgeber.eu.

- 1 **Hotel Haus Seeblick** Nideggen-Schmidt
- 2 **Hotel Roeb** Nideggen-Schmidt
- 3 **Hotel Zum kleiner Seehof** Simmerath-Woffelsbach
- 4 **Hotel Lindenhof** Monschau
- 5 **Hotel-Restaurant Haus am See** Simmerath-Einruhr
- 6 **Hotel-Restaurant Haus Salzberg** Schleiden-Gemünd
- 7 **Pension-Ferienwohnung Haus Diefenbach** Heimbach-Hasenfeld
- 8 **Eifelblümchen Apartments und Zimmer** Heimbach-Hasenfeld
- 9 **Pension Müller - Zum alten Rathaus** Schleiden-Gemünd
- 10 **Gästehaus Im Tal 18** Hellenthal-Reifferscheid
- 11 **Ferienwohnung Küpper** Monschau-Kalterherberg
- 12 **Gemünder Ferienpark Salzberg** Schleiden-Gemünd
- 13 **Ferienwohnungen Pielorz** Schleiden-Wintzen
- 14 **Ferienhäuser Eifel Chalet** Schleiden-Gemünd
- 15 **Ferienwohnung Eifelblick** Hellenthal-Schnorrenberg
- 16 **Ferienappartements Haus am Giebel** Heimbach
- 17 **Ferienhaus Eifelsonne** Hellenthal-Ramscheid
- 18 **Ferienhäuser Neugrad** Schleiden-Vogelsang
- 19 **Restaurant Genießer Wirtshaus** Simmerath-Rurberg
- 20 **Restaurant Eifelhaus** Simmerath-Einruhr
- 21 **Restaurant Rur-Café** Monschau
- 22 **Café & Bistro im Wildpark Schmidt** Nideggen-Schmidt
- 23 **Hofcafé im Krewelshof Eifel** Mechernich
- 24 **Café Ertgold** Bad Münstereifel
- 25 **Gastronomie Vogelsang IP Schleiden** Schleiden
- 26 **Campingplatz Camp Hammer** Simmerath-Hammer
- 27 **Naturcampinganlage Schafbachmühle** Schleiden
- 28 **Jugendherberge Aachen** Aachen
- 29 **Jugendherberge Burg Blankenheim** Blankenheim
- 30 **Jugendherberge Hellenthal** Hellenthal
- 31 **Jugendherberge Bad Münstereifel** Bad Münstereifel-Rodert
- 32 **Jugendherberge Monschau-Burg** Monschau
- 33 **Jugendherberge Monschau-Hargard** Monschau
- 34 **Jugendherberge Nideggen** Nideggen
- 35 **Jugendherberge Rurberg** Simmerath-Rurberg
- 36 **Jugendherberge Gemünd Vogelsang** Schleiden
- 37 **Gruppenhäuser Gut Finden** Rescheid & Wolfgarten

Host-categories:



- Hotel
- Half board
- Holiday Apartment
- Restaurant/Bistro
- Camping
- Youth Hostel/ Group accommodation



Eifel National Park Centre
with large exhibition
"Dreams of Wilderness"

Gateways to the National Park
Tourist information with a small exhibition about the Eifel national park

Rurburg
Heimbach
Höfen
Nideggen

National Park Information point

Look for balance – Book nature



H. Grabe

Hosts certified as offering barrier-freedom

There are offers for both disabled and nondisabled guests from selected national park hosts. Altogether 9 concerns have been classified as qualified and suitable for target groups by the Nationale Koordinationsstelle Tourismus (NatKo). „Barrierefreie Gastgeber Nationalpark Eifel“ is a united project of the Eifel National Park Administration and the North-Eifel Nature Park e.V..



Packages

Connoisseur packages provided by National Park hosts facilitate your planning for a relaxing day trip or short vacation. Look forward to experiencing varied hikes and bicycle tours, the best food, and of course the hospitality of our dedicated hosts. All this guarantees unforgettable days in the Eifel National Park discovery region.

www.nationalpark-gastgeber.eu
www.facebook.com/GastgeberNationalparkEifel/



Gemeinsam alles gewachsen.

Gemeinschaft kommt nicht von allein. Gemeinschaft kommt von schaffen. Darum unterstützen wir Sportler, Künstler, Unternehmer vor Ort und all die anderen, die sich für andere stark machen.

Weil's um mehr als Geld geht.



Sparkasse

UNSERE GÄSTEZEITUNGEN



eifeltimes Vulkaneifeltimes

Neben dem Freizeitführer des Nationalpark Eifel, geben wir in Zusammenarbeit mit den touristischen Arbeitsgemeinschaften der betreffenden Regionen, auch die Gästezeitungen Eifeltimes und Vulkaneifeltimes heraus. Durch die zweisprachige Übersetzung (niederländisch und englisch) sind sie für jeden Urlauber die perfekte Informationsquelle. Sie erhalten die Eifeltimes kostenlos bei allen Tourist-Infos, Nationalpark-Toren und Nationalpark-Info-punkten, Inserenten, vielen Hotels, Gastronomiebetrieben etc.

- In Zusammenarbeit mit den touristischen Arbeitsgemeinschaften
- Mit vielen Informationen über Ihre Ferienregion, Veranstaltungen, Freizeittipps für Wanderer, Fahrradfahrer und Wasserratten
- 2 Ausgaben pro Jahr: Frühjahr/Sommer und Herbst/Winter
- 3 Sprachen: Deutsch, Niederländisch, Englisch
- Auslage: in Beherbergungsbetrieben, allen touristischen Attraktionen und Infopunkten



Eifeltimes



Vulkaneifeltimes

WEISS
VERLAG

Weiss-Verlag GmbH & Co. KG
52156 Monschau
Telefon 02472 982 118
info@weiss-verlag.de

Fridolin



Kennt ihr schon unser Familienmagazin in der Region?

Hier findet ihr viele Ausflugsziele, Ratgeberthemen zur Schwangerschaft, zum Elternsein und rund um das Leben als Familie sowie tolle Veranstaltungen. Das Besondere: Wir versorgen Euch nicht nur als gedrucktes Magazin, sondern auch digital mit unseren Themen.

Schaut gerne vorbei!

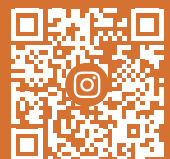
Unsere Erscheinungstermine der Magazinausgaben:



- 27. März 2023
- 2. Mai 2023
- 12. Juni 2023
- 25. September 2023
- 23. Oktober 2023
- 20. November 2023



Jetzt auch online
www.fridolin-familienmagazin.de



A forest full of obstacles

ARBORETUM Nature Trail in Nettersheim



The ARBORETUM is a unique obstacle course in the wild nature of the Eifel. In the middle of a mature forest with partly exotic woods, an almost 1-kilometre-long course with around 25 obstacles welcomes its young and old visitors.

The nature trail is open **from the beginning of April to the end of October** and offers an ideal platform in a unique atmosphere - for extraordinary group experiences, spontaneous workouts in the fresh air or a great day out with the whole family.

If you want to drop by spontaneously to work out, move forwards hand over hand, climb and crawl on your own, you can do so on weekends, public holidays and during the **NRW holidays from 11 a.m. to 6 p.m.** with our day tickets. No prior registration is required. The running course is well marked in the 2-hectare woodland, so that free training without a coach is possible without any problems.

Of course, there is a short introduction and if you have any questions, a trainer is always on hand to give advice and support. The perfect offer for athletes, but also for families and small groups: Test your limits, support each other and overcome challenges together - valuable experiences that strengthen trust and the sense of community.

During the season, group bookings of 8 or more people are possible daily from 9 a.m. to 8 p.m. (weekends by arrangement). These include an individually tailored programme of about three hours under the guidance and accompaniment of a trained trainer - including warm-up, coaching, team building and a final cool-down. This is how teamwork can be experienced: being able to rely on each other, carrying others along or being caught up yourself. This is group dynamics, measurable in sweat and tears of happiness. Only here is teambuilding dirty work that is fun and welds people together.

We offer the perfect setting for family outings, group events, children's birthday parties and much more - a natural package for beginners and daredevils that is only available at the ARBORETUM.



Arboretum Naturparcours

Engelgauer Weg · 53947 Nettersheim

Phone 0159 06271459

info@arboretum-naturparcours.de

www.arboretum-naturparcours.de



Eifalia - Tropical World Eifel

Experience the fascinating world of butterflies up close.



Enjoy the quiet hustle and bustle of the **Eifalia inhabitants**, such as the tropical birds, reptiles, turtles and of course the over forty different species of tropical butterflies. Children in particular love to take one of the nectar flowers on offer through the house, where the butterflies like to have a snack. Visitors can observe the little jewels of the air up close via a path system.

In addition to the tropical experience, the newly **built café offers** small lunch snacks, as well as coffee, cakes and fresh waffles. Younger guests are also catered for: there is an exciting discovery playground on the covered outdoor area to let off steam and with lots of creative activities.

Since the tropical house of the **butterfly garden Eifalia** opens every year from April to November without a break, a visit is a welcome change even in rainy weather.

Opening hours:

01 - 31 April from 10:00 a.m. to 4:00 p.m.,
01 May - 30 Sept. from 10 a.m. to 05 p.m.,
01 - 31 Oct. from 10:00 a.m. to 4 p.m.

Contact: Eifalia

Am Hammerwerk 2
53945 Ahrhütte
www.eifalia-schmetterlingsgarten.de
Phone +49 (0)151 187 30 355

Heinrichshof in Blankenheim

Overnight stays, horses, holiday programmes, creative activities



Anyone who loves nature and has a heart for animals is always welcome at the „Heinrichshof“ in Blankenheim.

Far away from the traffic, situated on the heights of the North Eifel, you have a gigantic view that stretches all the way to Nürburg. The core business of the dreamlike area is the **riding school for young and old**, as well as the horse pension with boxes and endless meadows.

But if you really want to enjoy the area, you can stay overnight. Four converted construction trailers in the middle of the farm offer space for a maximum of 16 people. Surrounded by horses and other animals, you will experience unforgettable days and nights. The individual domiciles are furnished to comfortably accommodate four people.

The **equipment includes** a small kitchen with a cosy sitting area. Each unit has its own shower in a separate sanitary carriage. Hikers, with and without horses, are welcome, as the location is directly on the Eifelsteig hiking trail. In addition, regularly changing holiday programmes, creative activities and events are offered.

More under

www.heinrichshof-blankenheim.de

KONTAKT: Heinrichshof 1

(Nonnenbacher Weg/ Ecke Mühlenweg)
53945 Blankenheim
Phone +49 (0) 2449 / 9195387
info@heinrichshof-blankenheim.de



Experience nature & history together

Eifel Nature Centre in Nettersheim
Out and about in nature with joy



Our scientific staff at the Eifel Nature Centre and the Nettersheim Education Centre offer great programmes, taught with a lot of fun and who-heartedly, in a unique animal and plant world.

Situated in a hilly cultural landscape, where you can discover evidence of the Eifel's Roman and Franconian past as well as fossils from the Middle Devonian (approx. 380 million years ago), visitors to Nettersheim will also find unique treasures in flora and fauna in the surrounding area.

Would you like to look for fossils, climb in the natural forest, investigate the life in the stream, walk in Roman footsteps, prepare delicious herbs, get creative? Get advice or have a look at: www.naturzentrum-eifel.de

We are just the right contact for all generations, for every family and group size. On weekends and holidays, you can visit programmes as an individual or family. We are happy to put together individual packages for groups, whether it's a child's birthday, a class trip or a company outing, whether outdoors or indoors, with or without an overnight stay, for a few hours or a few days. Just let us know what interests you have and we will take care of the rest.

In our nature experience village Nettersheim, we have accommodation for every taste for trips lasting several days:

- The youth hostel for school classes, groups, families, individual travellers with full board on request.
- The taverna with its guest rooms in Roman ambience for single travellers and families.
- The monastery for upscale seminars and conferences. With full board on request.
- The mobile home harbour with 25 pitches in the middle of nature.

Please also ask about our farmhouse and the self-catering house „Eifelhaus“, which are currently being renovated. They will be available again as soon as possible.

Team Naturzentrum Eifel

Re-opening planned in spring 2023

Urtstraße 2-4, 53947 Nettersheim

currently: Tourist-Info in the „House of Fossils“,

Bahnhofstraße 50, 53947 Nettersheim

Phone +49 (0)2486/1246

naturzentrum@nettersheim.de

www.naturzentrum-eifel.de

Opening hours:

Mon-Sun: 10.00 a.m.-04.00 p.m., Dec-Feb:

Mon-Fri 11.00 a.m.- 02.30 p.m.,

Sat-Sun: 10.00 a.m.-4.00 p.m.



The new variant of golf

Farmer's Golf - recreational fun for everyone in Kall-Keldenich



When you play farmer's golf, you can safely leave your caddy, golf clubs and good shoes at home, because this trendy sport from the Netherlands is a little different – it's rustic. While the real golf game is played with a handicap and needs to be played on accurately cut grass, farmer's golf is dominated by the natural environment around you.

The Margaretenhof in Kall-Keldenich provides a funny variation of the golf game which requires no previous knowledge of the game and offers a boundless degree of fun for young and old alike.

The 10-hole course at the Margaretenhof, where the owner's cows graze from time to time, has a total length of about 1.5 km, with track lengths of 100 to 300 meters and a 40 metre elevation difference. Playing time is around one and a half hours.

The aim of farmer's golf is to bat (with a wooden shoe and broom handle) the leather ball the size of a handball with as few strokes as possible through a pre-arranged set of holes. Players can expect a well or other obstacles on the course.

Farmer's golf also is a unique experience for family festivities, birthdays, company excursions, school classes and clubs. New is the farmer's café "Margaretenhof". Here homemade



cakes, wafers or small snacks are offered to complete your day after a game. Enquiries can be made in the club room at the Margaretenhof where coffee and homemade cakes, waffles and small snacks are served.

Opening times from May to October:

Wednesday to Friday from 2.00 p.m.,
Saturday and Sunday from 10.00 a.m..
Other appointments can be arranged in advance.

Farm café opening times:

May 1 - Sept. 30: Wed.-Fri. 2:00 p.m. - 6:30 p.m.
Sat and Sun 9.30 a.m. - 6.30 p.m.
Mondays and Tuesdays rest days
1 Oct - 30 Apr: Wed - Fri 2pm-5.30pm
Sat and Sun 9.30 a.m. - 5.30 p.m.
o. www.eifelfarm.de

Price:

Adults pay 6 EUR; 4 EUR for children up to 14 years of age.
A discount applies to groups.

Want to have some fun?
Then look no further:

CONTACT: Bauerngolf

Andreas und Cilia Gentz
Margaretenhof
53925 Kall-Keldenich
Tel. +49 (0) 2441 / 770246
golf@eifelfarm.de
www.eifelfarm.de



Adventure world Eifeltor

The leisure centre for the whole family in the middle of nature



Thrill-packed rides are guaranteed on the 680 m summer toboggan as well as on the off-road quad track and the children's quad course. Attractive are the guided quad bike tours to the most beautiful places of the North Eifel and into the National Park.

Skill is necessary on the 18-hole mini golf course. Popular with children: the playground with electric swing, electric crane, excavator and trampolines. Hunger and thirst can be satisfied in the restaurant and on the outdoor terraces.

The ideal starting point for a holiday in the Eifel is the attached hotel with social rooms and event hall. Every year, the Hotel Restaurant Eifeltor offers the big country festival in November. Many dishes as well as fresh waffles and different burger variations invite you to linger.

Contact: Adventure world Eifeltor

53894 Mechernich-Kommern
Phone +49 (0) 2443/98 13 51
info@erlebniswelt-eifeltor.de
www.erlebniswelt-eifeltor.de

Opening Times

At the start of the Easter holidays to 31 Oct.: daily 10.00 am to 6.00 pm, in the NRW summer holidays to 7.00 pm. Groups by appointment. Direct access to the Rheinische Freilichtmuseum with discounted combi-tariffs.

Krewelshof Eifel

Excursion destination with freshness experience in Mechernich-Obergartzem



The Krewelshof Eifel offers many small and big moments of happiness for the whole family.

Shopping experience: tasty jams and all kinds of gifts - most of them from our own factory and produced sustainably. Children's and **family programme:** In keeping with the season, a spring show, a straw castle, the maize maze, children's pumpkin carving and the pumpkin show attract visitors. From mid-November, the smell of delicious delicacies wafts through the air. The Winter Wonderland opens its doors with the ice rink.

Gastronomy - the experience of freshness: the cosy courtyard café offers a rich breakfast buffet daily from 9 am. From 11.30 a.m., the courtyard chefs conjure up fresh lunch dishes and the colourful cake buffet tempts the guests.

Boathouse by the lake - relax or celebrate: Whether socialising at the long family table or on the terrace by the lake - you can enjoy the view with a delicious slice of homemade cake and a glass of homemade sparkling wine.

The Krewelshof is as multifaceted as its visitors: whether families, school classes, companies or wedding guests - everyone can feel they are in good hands here!

Krewelshof
Natur. Genuss. Lebenslust.
EVENTLOCATION KÖLN & EIFEL

CONTACT: Krewelshof Eifel

Krewelshof 1 · 53894 Mechernich-Obergartzem
Tel. +49 (0)2256-95988300 · www.krewelshof.de



Rhineland Wildlife Park

in Kommern - „Experience nature up close“.



- Beautiful landscape park with large pond
- Over 200 native wild animals in outdoor enclosures
- Owl flight show from May 2023 onwards
- Grandstands and viewing areas for observation
- Small animal zoo right next to the play ground and catering facilities
- Adventure playground with 50-metre zip line
- Barbecue grill and café on restaurant terrace all year round
- Dogs, leashed, always welcome, visit free of charge
- Wild boar enclosure from 2023 now also accessible to dog owners
- Forest education and guided tours can be booked by phone 02443/6532
- Free audio guide tour via smartphone with our animal keeper
- Event rucksack and event Olympics for children's birthday parties and company parties
- Hire of handcars
- Barbecue areas can be booked all year round
- Park only barrier-free to a limited extent

Simply closer! Why go far afield to experience animals in the wild? Just outside Cologne in the Voreifel lies a small natural paradise. A natural forest with rich birch, beech and oak stands, clearings of grassland and a large fish pond extend over an extensive area of 45 hectares.



The special thing about the walk is that you get up close with the game, with no fences. Who has ever looked up close into the almond-shaped, dark brown, glowing eyes of a sika deer, and who can distinguish red deer from fallow deer?

There is much to experience in the Wildlife Park Rhineland, on the outskirts of Kommern, not far from Mechernich. The „kids“ can climb, play and romp to their hearts' content in the adventure playground. You can quickly and easily stow the provisions for the family in the trolley that is waiting for you at the entrance. You can also stop by the Waldhaus Grill and Café. With cake and coffee, sausages, game meatballs and many other delicacies, you can reflect on your experiences in a cosy atmosphere.

Contact:

Wildlife Park Rhineland

BecherhoferWeg 71
53894 Mechernich-Kommern
Phone +49 (0)2443 / 6532
Fax +49 (0)2443 / 911 828
info@hochwildpark-rheinland.de
www.hochwildpark-rheinland.de



Opening hours

Open all year round:

March to October: daily from 9 a.m. to 6 p.m., November to February: daily from 10 a.m. to 5 p.m.



Mysterious ducts and pits!

The tunnels and lead into the underworld of Mechernich
Excavation chambers of the Günnersdorf visitor mine



Fotos: Stadt Mechernich/Ralph Sonderrmann



The ore mining at the Mechernich Bleiberg (lead mountain) is more than 2,000 years old. Celts and Romans already were digging for ore here. The Günnersdorf mine in Mechernich was created in the second half of the 19th century, the blooming of mining, and was operated with interruptions.

During World War II, the pits served as air-raid shelter for the people of Mechernich. Mining operation was completely terminated in 1957. Since 1995 the Günnersdorf mine is a visitor's mine with a museum.

In the mining museum you can admire tools, pit lamps and uniforms of the miners. An expert mine guide accompanies the visitors, providing insight to the geology, mine history and early production procedures of the Günnersdorf mine.

With the salute "Good luck" ("Glückauf") the visitors are going underground. Before, they all are equipped with a helmet. As there is a temperature of only 9° C all year round, adequate clothing is recommended. Sandals or high heels are unsuitable. In the galleries and channels the visitors get an impression of the difficult conditions under which the ore has been mined by the workers.

The treasure hunt (especially on Halloween) in the Günnersdorf visitor mine promises exci-

tement and adventure for children aged around 5-11 years. At the end, all participants receive a certificate that distinguishes them as treasure hunters. A variety of events take place at and in the visitor mine throughout the year - e.g. B. Guided tours in dialect as part of the event series „Mir kalle platt“, adventure hikes or „mysterious“ presentations and readings. A grill hut that can be rented on the premises of the Mining Museum completes the offer.

CONTACT: Friends of the association Mining Museum Mechernich e.V.

Bleibergstrasse 6 · 53894 Mechernich
Tel. 02443/48697 Fax: 02443/8204
bergbaumuseum-mechernich@t-online.de
www.bergbaumuseum-mechernich.de

Tue-Sat 2pm-4pm, Sun 11am-4pm. Daily (Monday rest day) takes place - regardless of the number of visitors present – in each case at 2 p.m. there will be a guided tour. Further tours will be carried out if at least 7 people. getting together. Registered groups will also be guided outside of the specified times.

Individual visitors are recommended to register by telephone as early as possible in order to be assigned to tours that have already been scheduled. In this way, unnecessary waiting times can be avoided.



Bowling and Lasertag

In the Zikkurat culture and recreation factory, the possibilities for excitement and fun will blow you away!



At the **BOWL factory**, sport and entertainment come together in a multifunctional centre: the Zikkurat culture and recreation factory. The BOWL factory is located in the unique setting of the original Stoneware Factory Custodis, which dates back to 1882.

Visitors can smash their next strike on one of the 16 Brunswick bowling lanes. But it doesn't end there. There's also billiards and darts for both young and old to pit their wits against each other.

The in-house restaurant serves international dishes and cool drinks & cocktails. The BOWL factory is also an event venue. For around 120 guests, it offers the ideal setting for Christmas and company celebrations, business events and private parties.

Contact: BOWL Factory

An der Zikkurat 4
53894 Mechernich-Firmenich
Phone +49 (0) 2256/959049
www.bowl-fabrik.de

Opening times:

Monday/Tuesday: Closed Wednesday -
Friday: from 3 pm
Saturday: from 2 pm Sunday: from 12 pm
If you present this leaflet, you will receive a one-time 10% discount on the standard rate at the BOWL factory if you book a slot for at least 2 hours. This discount cannot be used in conjunction with other offers.



In a **1,000-square-metre arena**, players can have an explosive time in a high-tech Laser Tag shoot-out – action-packed fun and an adrenaline rush are guaranteed. A great way for young and old alike to have fun, no matter what the weather.

Players get a phaser and a vest and try to earn as many points as possible. The game takes place in a dimly lit maze where the obstacles are decorated in fluorescent colours. To succeed requires teamwork, stamina, accuracy and a tactically intelligent approach.

The arena is located on the ground floor of the former factory, making it accessible for visitors in wheelchairs. And there is also a bar and restaurant in the neighbouring BOWL factory.

Contact: Laser Tag Arena Zikkurat

An der Zikkurat 4
53894 Mechernich-Firmenich
Phone +49 (0) 2256/9571653
www.lasertag-zikkurat.de

Opening times:

Monday / Tuesday: Closed Wednesday -
Friday: from 3 pm
Saturday / Sunday: from 12 pm
If you present this leaflet, you qualify for the 2-for-1 offer in the Laser Tag Arena
Offer: Play two missions but only pay for one.
Cannot be used with other offers, valid for one person only.



Flying Fox-Park · Seepark Zülpich

The biggest zip line and climbing park in the region

Foto: © Alexander Zink-faszinatur GmbH



Fly as free as a bird at up to 40 kilometres per hour over the Seepark Zülpich and water sports lake. The Flying Fox Park is the biggest zip line and climb-ing park of its kind in the city triangle of Cologne-Bonn-Aachen. It has two different courses, each with six ziplines, at heights of between eight and twelve metres and a total length of 815 metres. The fun beginners and pros can have flying and climbing is endless, no matter whether they are 10 or 99 years old!

With plenty of activities, the Flying Fox Park is a great day out for schools; private groups can celebrate birthday parties and companies can book a team building event. And we haven't forgotten the smaller visitors: there is a children's cable car, which has been funded by Förderverein Gartenschau-park Zülpich.



CONTACT: Seepark Zülpich

Am Wassersportsee 7
53909 Zülpich
info@seepark-zuelpich.de

Tel.: +49 (0)2252-52345

www.seepark-zuelpich.de/flying-fox-park

Opening times:

From 1 April to 31 October,

Fri 1.00pm – 6.00pm (last run at 5.00pm)

Sat., Sun. & public holidays:

11.00am - 6.00pm (last run at 5.00pm)

From Monday to Thursday the facility is

only open for groups that have pre-booked.

Nideggen Castle and castle museum

A journey back in time



Burg Nideggen can look back on an illustrious past and is a cultural unique monument to the history of the Middle Ages in the Rheinland and Eifel regions. The castle was build from the 12th Century onwards as a residence for the Counts of Jülich. Since 1979, the keep has housed the Castle Museum. Opposite the keep the castle restaurant warmly invites you to a view out onto the Rur-Eifel region. Today, Düren district council looks after the castle and the castle museum.

Nideggen castle museum invites the visitor to take a tour of discovery into the Middle Ages: Walking around the exhibition rooms the visitor is transported through culture and time to the everyday world of medieval castle life and experiences the chivalry and the economic culture of the Middle Ages in an authentic environment: In the dungeon, the visitor can even hear the fate of Burg Nideggen's prisoners. A 9 m2, multi-media presentation illustrates castle life and first hand, shows how the castle was destroyed. The castle museum offers an extensive program of events as well as workshops and guided tours.

Opening times: Tuesdays-Sundays
from 10.00 - 17.00 hrs

Last admission is at: 16.30 hrs

Phone +49 (0) 2427/63 40

Fax +49 (0)2427/90 28 85

burgenmuseum@kreis-dueren.de

www.burgenmuseum-nideggen.de



Schmidt Game Park

At home in the Eifel

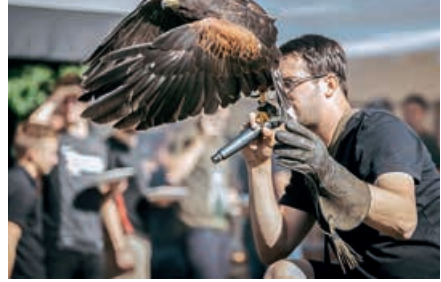


Right next to the Eifel National Park, deer and co live close enough to touch! The nature park in Nideggen-Schmidt is home to native wild animals, tame domestic and farm animal species and a naturally preserved plant world.

The shorter farm circuit also starts at the large adventure playground. Just the thing for people with walking difficulties, parents with small children and anyone who doesn't like to walk: there are donkeys, goats, sheep, rabbits, guinea pigs, geese, chickens and running ducks to see. The outdoor terrace and the falconry with various birds of prey can also be reached barrier-free.

The Scheidtweiler family has **renovated all the paths**. The regular hiking trail is about 5 km long and largely leads through newly designed outdoor enclosures. Keeping animals in a manner appropriate to their species is a top priority: the enclosures are very spacious, completely adapted to the animals' natural habitat and offer plenty of opportunities to retreat. You can see red deer all year round (no outdoor enclosure) as well as fallow deer, sika deer and mouflons, all of which can be fed, plus various species of ducks and Egyptian geese on the ponds.

The **falconry** is home to the desert buzzard Maria, the eagle owl Klaus, the tawny owl Klaus-Mausi, the red kites Hildegard and Waltrud and the black kites Walter and Ewald. From April to October



the birds of prey show off their skills at the daily 2 p.m. flight show.

The Café & Bistro offers many coffee specialties and the famous homemade cake. Pudding or poppy seed crumble, gooseberry, cherry, apple or apricot crumble and much more, as well as baked cheesecake (sa/so) - there is something for everyone here. If you want to satisfy your hearty appetite, you can choose from specialties such as sandwiches with deer ham from our own production or a large selection of soups. Here you get quality at fair prices. On Sundays and public holidays there is a large breakfast from 9:30 to 11 am. Delicious homemade rolls are served with a cold cuts platter and everything your heart desires. Telephone reservation required.



CONTACT: Wildpark Schmidt

Wildparkstraße · 52385 Nideggen-Schmidt
Phone +49 (0)2474 / 215

www.wildpark-schmidt.de

The opening hours of the park and the café as well as the entrance fees to the park can be found on the homepage at www.wildpark-schmidt.de



Adventure Golf Fun in Kallbach

Kallbach's exceptional 18-hole Adventure Golf Course guarantees fun and excitement for both young and old



Nestled in the idyllic Kall Valley in Hürtgenwald-Simonskall, the new leisure highlight is right next to the Landhotel Kallbach. This varied Adventure Golf Course extending over 3,000 square metres, ingratiates the trend sport from the USA, which has arrived in Kall Valley. The lanes in Kallbach's Adventure Golf Course all have natural obstacles, water, stones and wood purposefully placed in a terrain shaped differently from the surrounding landscape. Visitors can enjoy playing this innovative recreational game through animal sculptures, tree trunk courses and even through a water wheel. There are different challenges and levels of difficulty to master. The rules of the „proper“ game of golf have been modified.

Players are taught these rules at the start – you must listen carefully as they are crucial for the game. It is a game that offers a lot of fun and entertainment for teams, families with children and groups. Who can sink the ball in the hole with the fewest swings, despite all the unusual obstacles? It is not just about being sporty, but more about skill and creativity.

Of course, it is up to each individual to train as often as they want to improve their „handicap“ ... If you feel like having a drink after your round of Adventure Golf, you can sit by the course on the terrace or in the cosy restaurant of the Landhotel Kallbach. Where you could be treated, for example, to yummy waffles and delicious food.

Prices/Tickets

Tickets are only available from the reception at the Landhotel Kallbach. Adults 7 7.50 • Children (under 12 years) 7 6.50 Schools: 7 5 p.p. (Tue - Fri) • Group from 10 people (prices per person per round (18 holes) incl. ball and club rental, 1 score card.) No golfing skills required. Minimum age requirement: 9 years. Free Kids Green for younger children's birthdays, group, corporate events. For reservations, planning and catering call Tel.: 02429 9444-0

Opening times

March - October:
Daily from 10 am until dusk*
November to February: Tues. – Sun.
from 10 am until dusk*
Also open all year in good weather.
Opening hours for school groups
and groups by appointment.
Last admission: 1.5 hours before closing.

*The opening times may vary depending on the weather. There are sufficient parking spaces available.



Information and bookings:

Landhotel Kallbach
Tel. +49 (0)2429 9444-0
Simonskall 24-26
52393 Hürtgenwald
kallbach.de, eifelgolf.com

High Ropes Course Hürtgenwald

Besides adventure and fun at airy heights, experience the beautiful nature and more.



The family-friendly high ropes course in the region offers a special experience for the whole family with 130 individual elements divided into different courses and 1400 m of ropeways.

Here, visitors can experience adventure and thrills. A completely new space can be explored at airy heights.

Children as young as 6 can climb high up and master the challenges between the trees. Climbing trains balance, coordination and motor skills. In addition, children and adults develop the courage to face and master situations.

Younger children can experience adventure, creativity and stories in the forest through special activities. Visitors who do not want to climb also have the opportunity to use our wonderful forest offers for mindfulness. There is something for visitors of all ages and nature can be experienced.

With our special concepts, we strengthen people holistically. Our trained staff will look after you with competence and empathy in all the opportunities we offer you. Whether as an individual or as a group, within the framework of our diverse possibilities, our aim is for you to feel at ease.



Special ways to empower people are

- team building
- mindfulness training in the forest (Shinrin Yoku)
- resilience training in nature
- yoga for all in the forest
- coaching against fear of heights
- courses in tactical self-defence (KravMaga)

The Hürtgenwald high ropes course offers

a very special experience for individual visitors, families, groups, companies and school classes. There is something for everyone here. For more information, please contact us using the details below.



CONTACT: Petra Zalfen-Harzheim and Marcus Zalfen

Phone +49 (0)2427/905438
 info@hochseilgarten-huertgenwald.com
 www.hochseilgarten-huertgenwald.com



Mit freundlicher Unterstützung von

Landesbetrieb Wald und Holz
 Nordrhein-Westfalen



Ahoy, you landlubbers!

Sailor and pirate adventures at Vlatten Castle



© Tom Bombadil

Picturesquely located in the Heimbach district of Vlatten, a former **moated castle** will provide the perfect backdrop in 2022 to immerse yourself for a few hours - or the whole weekend - in a time when men were made of iron and ships were made of wood. With the event „Pirates - An Adventurous Journey through Time“, Winterhoffs Entertainment sets new standards in terms of lovingly and perfectly equipped historical events on the theme of „seafarers and pirates“.

The pirate adventure focuses on pirates of all ages. Everyone is invited to become part of the action and learn more about life on land and at sea. There will be plenty of action, music, programmes, hands-on activities, a market and camp life. From **29.06.-02.07.2023** everything that makes a real pirate adventure is hidden behind the walls of Vlatten Castle.

This includes scary, exciting pirate stories, an energetic fencing show, a rope making machine, where ropes and skipping ropes are spun, as well as cannon and muzzle-loading demonstrations. **Tickets and info at: www.piraten-abenteuer.de**

Contact:
Winterhoffs Entertainment

Ralf Winterhoff
Tel. +49(0)172-2623650
info@winterhoffs.com



Across the eras

„Romantika“ - The Romantic Time Travel Market



© Tom Bombadil

In 2022, Romantika will once again combine the fantastic with real worlds. Under the motto „Be when you want. Be where you want“, visitors will be guided through the ages.

From 22.9-24.9.2023, people of all backgrounds are invited to immerse themselves in the Middle Ages, the Baroque era, the Victorian era and the Belle Epoque. But watch out! Pirates and crooks are also up to mischief and must be distinguished from real gentlemen.

A colourful open-air spectacle is offered on the grounds of Heimbach's picturesque Hengebach Castle. Artists, musicians, actors, show elements, trade, gastronomy, performing crafts and trades as well as performers make the Romantika world truly colourful and unique. Whether as a performer or visitor. Whether actively dressed or curiously civil. Everyone has the opportunity to enrich and shape this event with their presence.

Tickets, information and opening hours:
winterhoffs.com

Contact:
Winterhoffs Entertainment

Ralf Winterhoff
Tel. +49(0)172-2623650
info@winterhoffs.com



Magic of the Advent Season

Christmas story comes to life in Heimbach

© Tom Bombardil



The **Christmas Carol**, probably the best-known work by the **English author Charles Dickens**, was published in 1843. The Christmas market at Hengebach Castle in Heimbach takes the Christmas Carol, as it is called in the original, as its theme on all four week-ends of Advent. The characters come to life and transport visitors back in time to Victorian England. Lovingly designed market stalls will be integrated into romantic corners and niches on the grounds. High-quality, unusual, curious and sometimes bizarre goods will be on offer.

Delicacies and tasty drinks round off the offer. Throughout the day, visitors will be enchanted by a changing cultural programme at various locations in the castle. The Charles Dickens Christmas story will be performed as a short play. All this will spread an **unforgettable Christmas flair of the year 1850**, which will be especially effective in the evening hours, namely when the castle, picturesquely bathed in light, will radiate its very own charm.

Tickets, information and opening hours:
winterhoffs.com

Contact:
Winterhoffs Entertainment
Ralf Winterhoff
Tel. +49(0)172-2623650
info@winterhoffs.com

A visit to Waschbär, Präriehund & Co.

There is always so much to see and do at the Alsdorf Animal Park



Come visit the meerkats, prairie dogs and much more.

At the Alsdorf Animal Park there is so much to experience every time you visit, because the only free-entry zoo in the region makes for a great family day out.

From the petting zoo, where children can feed and stroke the goats, to the large duck pond and red deer enclosure, you can come and meet the park's many animal residents during a tour of the grounds. Set in the middle of lush nature by the pond, the park also offers plenty of variety.

A large playground with a giant slide, a raft pond and a climbing frame ship can be enjoyed by visitors as well as the new adventure golf course, where you can play a round of mini golf in a very special setting.

If you are arriving by car, you will only pay 3 euros for your parking space for the whole day. The fun park is already included!

Contact:
Alsdorfer Freizeitobjekte GmbH
Stefan Heffels,
Phone +49 (0) 157/73 52 00 36
info@tierpark-alsdorf.de
www.tierpark-alsdorf.de



Kermeter Alpakas

Discover your alpaca experience!



If you want to be close to the gentle alpacas, you can experience these fascinating animals in different ways together with us.

Guided hikes

You can experience nature with ease and rediscover slowness. Escape the hectic pace of everyday life and let yourself be inspired by your rest seeking companion. The alpacas set the pace on the leisurely two-hour tour. Our hiking tour takes place on paths along the Eifel National Park. The fresh air, slightly hilly landscape and free view over land and fields promises to be a harmonious experience.

Alpaca - meadow time

If you don't like hiking, but want to spend the relaxed time with the alpaca herd, you can visit the alpacas on their meadow. Whether alone, with friends or family, you are welcome to do so. You will learn all kinds of interesting facts about the funny clowns and you can let the tranquillity of the alpacas take effect on you. Experience the curious creatures with their relaxed nature in the herd. Very soon you will feel a special connection to these extraordinary animals and enjoy the atmosphere of peace and quietness.

Donkey hike with alpaca visit

The guided donkey hike is aimed at families with children from the age of six as well as adult



donkey lovers. After the one-hour hike with our dwarf donkeys, we visit the alpacas on the alpaca field.

Alpaca - sponsorship

With us you have the possibility to take over a sponsorship for your chosen favourite alpaca!

Experience voucher

A great gift idea for any occasion, whether it is a birthday, Christmas or for a dear friend.

We would be happy to introduce you to the world of alpacas and make an appointment for you!

Opening hours

Dates by arrangement or according to our website.



Further information, photos, also of our alpacas, are found under

www.kermeter-alpakas.de
Frank und Beatrix Kelleners
Kermeterstr. 28
52396 Heimbach-Hergarten/Eifel
Phone +49 (0)157 34527624



Rain or shine

The Bubenheimer Spieleland offers games, fun and adventure for young and old, regardless of the weather - **open all year round**.



© Natalie Meyer

Expansion of the playground by 30,000 sq m with a huge water landscape, raft basin and playable water tower. In addition, the new panorama hall offers protection in all weathers. This makes a trip to the Bubenheimer Spieleland weather-independent and in any situation. safe and stress-free.

Children and adults,

kindergarten groups, school classes and clubs can play, romp and experience an unforgettable adventure to their heart's content. **The indoor and outdoor areas** are open all year round. The large adventure playground has a climbing park, water playground, boat water slide, giant carpet slide, go-kart track, football area, climbing pyramid, trampolines, monkey swing, water and sand playground, the 3000 sq m big all-weather hall with 16-person trampoline, climbing frame and climbing wall and many other play opportunities for young and old.

In the play paradise children explore on two levels of the playable organic farm on two floors. It goes through the farmhouse to the barn and from there to the maze. The smallest children find their own area in the play store.

Adventure golf course: 12 holes on 1800 sq m with varied natural elements. Whether alone or together with friends – always a successful pastime.

During the winter season, the two all-weather halls with go-karts, climbing frame and trampoline facility, as well as the two indoor areas on the farm offer numerous play opportunities.

The outdoor area is also open during the winter season and, depending on the weather, the climbing park and the carpet slide can be tried out. For the physical well-being, the kiosks and the gastronomy offer a variety of food and drinks.

Opening hours and prices:

Open all year round

Indoor and outdoor area:

18.03.2023 to 01.11.2023

Daily 9:00 a.m. – 6:00 p.m.*

Sat/Sun/holidays/school holidays: See homepage for prices Mon-Fri (on school days).

Winter season:

02.11.2022 to 17.03.2023

Sat/Sun/Holidays 10:00 a.m. – 6:00 p.m.*

Prices see homepage

*Opening hours/prices may be subject to change due to weather conditions and Corona.

CONTACT: Bubenheimer Spieleland

Burg Bubenheim 52388 Nörvenich

Phone +49 (0)2421/486400

kontakt@bubenheimer-spieleland.de

www.bubenheimer-spieleland.de



Brückenkopf-Park Jülich

Leisure and recreation for all in the family



The 33-hectare Brückenkopf-Park in Jülich offers **plenty of leisure fun**. Walking paths lead through blooming gardens, theme gardens and woodlands. The zoo is home to native animal species, but also to arctic wolves, lynxes, kangaroos, meerkats, otters and exotic birds.

Various children's areas invite youngsters to climb and romp around. The forest playground and climbing tower in the 'Stadtgarten' and especially the 'kids n' all' playground with its raft pond provide limitless opportunities for fun and games. Using the youth camp which is located directly in the park, extra-curricular learning can now take place over several days in different 'classrooms'. An assault course featuring high ropes, a skating rink, rock climbing, mini-golf, a beach volleyball court and a small playing field means that children will never be bored. A varied programme of events and a restaurant are also available.

Visitors can retrace history, when walking in the 'Stadtgarten'. This is where Napoleon ordered a 900 m long fortress building to be built in the shape of a crown. Parts of the 200 year old fort are still accessible today and provide insight into the world of military life way back then.

Visitors of the park, children and youth groups as well as transient travelers can stay overnight on the camper van site offering 25



parking spaces with power connection. In addition a youth camping site with sanitary facilities, barbecue and separate playing area is provided. Please call 02461-979519 or 9795-26 for further information. New is the „JUFA“ youth hostel at the park. You can find further information on this at: www.jufa.eu

Opening hours:

March to October daily from
09:00 a.m. – 06:00,
November to February daily from
10:00 a.m. – 04:30.

Admission prices:

Adults: 8.00 EUR
Children taller than 1 m: 5.00 EUR
Children under 1 m: free
Families: adults 6.00 EUR
Children 4.00 EUR
Group rate from 15 persons
Adults: 7.00 EUR
Seniors from 65 years: 6.50 EUR
In the winter time (Dec.-Feb.)
reduced entrance prices
Included in the entrance price is
the use of the Energy-Experience-Pavilion!

Contact: Brückenkopf-Park Jülich gGmbH

Rurauenstr. 11 · 52428 Jülich
Tel. +49 (0) 2461/97950
Fax: +49 (0)2461/979522
brueckenkopf-park@t-online.de
www.brueckenkopf-park.de



Welcome in the indeland!

...a landscape in motion with lots of room for fantasy, fun, nature, energy and perspectives!



Photo: JaninaPhotography/stockarobbe.com



Photo: Thomas Hinze

Climb up the Indemann, the architectonic landmark of the indeland, and have a look on the changes in the landscape. Over twelve experience levels, 216 steps lead up to the viewing platform, where in 36 meters height you have a far, spectacular all-round view of the unique panorama with the constantly changing open-cast mining landscape Inden.

Another fantastic view is offered to visitors of the indeland on the Sophienhöhe, a re-cultivated spoil heap in the open-cast mining area Hambach. In the East of Jülich the Sophienhöhe rises 300 meters in the air and thus prominently overlooks the flat fertile plains. Due to re-cultivation measures, the Sophienhöhe offers a vast field for leisure time and recreation opportunities in a green environment with a path-network of about 100 kilometres as well as numerous viewing points and resting places.

For cool down on hot summer days the Blaustein lake is the ideal leisure time tip in the indeland. The 96 hectare relic lake of the former open-cast mining site Zukunft-West, owes its name to the area north of Dürwiß, which was once called "Am blauen Stein". From April to October water sports enthusiasts find a local recreation area for sailing, surfing, swimming or diving.

Also as regards culture the indeland hides many treasures. The only museum for sheet glass painting in Germany is located in the indeland community Linnich and in Langerwehe visitors can visit an exhibition as well as the pottery

workshop of the popular pottery museum as well as the Eifel market. Another visitor attraction in the indeland is the fortification of the citadel Jülich, the visit of which can easily be combined with a detour to the Brückenkopf-Park.

Further information on the indeland is obtained at the following institutions:

InfoCenter indeland railway station
Langerwehe Bahnhofsplatz 14,
52379 Langerwehe
Phone +49 (0) 2423/4073851
infocenter@langerwehe.de

Opening hours:

Tue., Wed., Fri. and Sat. 10:00 a.m.–12:00 a.m.
and Sun. 10:00 a.m.–04:00 p.m.

Indemann 52459 Inden Altdorf
Phone +49 (0) 24653948,
indemann@gemeinde-inden.de

Opening hours and elevator:

Mon.-Fri. 02:00 p.m.–08:00 p.m., Sat. 02:00 p.m.–10:00 p.m. and Sun. 10:00 p.m.–08:00 p.m.
(from Nov. to the middle of April excl. Sat. and Sun 02:00 p.m.–04:30 p.m.)

Tourist Information Jülich

Opening hours April – October: Wed.-Fri. 10:00 a.m.–12:00 a.m. and 01:00 p.m.–04:00 p.m., Sat and Sun. 11:00 a.m.–03:00 p.m., 11th of Nov.–23rd of Dec. 10:00 a.m.–08:00 p.m. (on the Christmas Market).

These are available at all information points in the indeland or under www.indeland.de for direct download.



Bathing tradition in Aachen

Enjoy pure wellness at the Carolus Thermen on the edge of Aachen's spa gardens



© Photos: Olaf Rohlf

Even the ancient Romans appreciated the hot Aachen springs for their healing and soothing effects and celebrated a comprehensive bathing culture in spacious, luxurious thermal baths. Today, the Carolus Thermen Bad Aachen offer a superlative range of wellness facilities.

The heart of the Carolus Thermen is the bathing hall supported by imposing columns. Here you can immerse yourself in the bubbling healing power of Aachen's thermal waters. Active and passive experience zones, hot and cold water grottos, cascades, a flow channel, the soothing „Strokkur“ brine steam bath as well as an inspiring relaxation room with a salt-radiating system invite you to relax. You can experience a „day by the sea“ in the OCEANUM in a 40-minute session.

The **sauna world** offers Finnish saunas, a beautifully landscaped sauna garden with sauna lake and sun terraces, an oriental bathing world and a ladies-only area (Feminarium). A total of twelve steam baths and saunas at different temperatures invite you to relax in the four areas. Numerous infusion ceremonies and free care rubs round off the feel-good experience in the sauna world.

In the **Carolus spa**, body, mind and soul are pampered with a wide range of treatments. Whether tension-relieving massages, nourishing facial and body treatments, gentle pee-

lings, invigorating body wraps or exclusive wellness ritual packages for well-being alone or as a couple - at the Carolus Spa everything revolves around your well-being.

Three different restaurants leave nothing to be desired in terms of cuisine. From healthy bistro snacks to the culinary variety of exquisite à la carte cuisine, the gastronomy in the Carolus Thermen offers everything for a well-rounded day of well-being.

Between sauna sessions, people meet in the „Auszeit“. Holiday atmosphere with a view of the thermal area can be experienced in the „Esseria“. The restaurant „Kochkultur“ with regional, seasonal cuisine is open to all guests.

Muscle and joint-friendly aqua gymnastics and meditation are offered several times a day free of charge.

Contact:
CAROLUS THERMEN BAD AACHEN

Stadtgarten/Passtraße 79
52070 Bad Aachen
Tel. +49 (0)241 / 182 74 - 0
Fax +49 (0)241 / 182 74 - 2 74
mail@carolus-thermen.de
www.carolus-thermen.de



Welcome on board!

Embedded into the lush green of a large wooded area there is the Eifel Lake District with its fleet of boats near to nature



The Eifel Water Information Centre in Heimbach is an extramural learning centre, a museum and a playground for large and small children. Here you can discover everything about water, the elixir of life. Four different topics are highlighted here:

Nature and the environment

Large aquariums with river and lake creatures, an interactive Eifel- relief model, a water cycle model, a diorama lake shore, a water workshop, a loupe table ...

Water Technology

This includes dams that can be controlled by visitors, turbines and drinking water facilities, a water purification system, modern pumps, old measuring instruments and a well-drill ...

Art, culture, history

The mysterious aqua mystica, sections of the Roman canal, water images, Grandma's laundry room, a collection of washing machines, and a collection of baths, both old and new.

Play and relax

Water garden in the grounds, glass water pipe system, a children's game room, a bistro, gift shop, reading room ... etc.

The car park is located right behind the house, and we are completely free from barriers! We

have a large number of moving models, computer stations and simulations, field trips and experiments, so there is always something exciting for all age groups, young and old.

Eifel Water Information Centre

Karl H. Krischer -Platz 1
52396 Heimbach
Tel. +49 (0) 24 46/9 11 99 08
Fax: +49 (0) 24 46/9 11 99 07
info@wasser-info-zentrum-eifel.de
www.wasser-info-center-eifel.de

Versatile programme:

In addition to the trips that take place daily in the season (01.04. - 22.10.2023), which are scheduled daily, special bookings such as private and company events and evening trips with music and dance are possible.

22.07.23 Rursee in Flames

40.00 € from Schwammenauel and Rurberg
8.00 p.m. shuttle boat from Einruhr adults
18.00 €, children 10.00 €;

03.12.23 St. Nicholas trips from Schwammenauel

11.00 h and 15.00 h, adults 19.50 €, children 18.00 €.



Treat yourself to RurseeTime

Explore and enjoy the green landscape of the Rur-Eifel from the water



Embedded in the Rur Valley, there is the Dam Schwammenauel, popularly known as lake Rursee, which lies in the green landscape of the Rur-Eifel. Treat yourself to your very own Rursee time and explore the Rursee with one of our boats. Nestled in the green landscape of the Rur-Eifel, this pleasure promises pure relaxation and it will put a satisfied smile on your face.

Our boat rental has various types of boats, including canoes, rowing boats, pedal boats and electric boats for up to 7 people, with which you can sail across the lake almost silently and without any effort.

The highlights for holidaymakers are the atmospheric evening cruises and sailing with a skipper. Sailors can charter a classic dinghy cruiser to explore this exciting sailing area. Reserve your boat now conveniently via our booking portal:



RurseeZeit also operates the Schwammenauel sailing school and a boat shop with moorings and accessories shop at our jetty. We offer boat owners a wide range of services, including a comprehensive all-round carefree package with crane service with rigging/rigging and boat maintenance as well as transport from or to winter storage.

Our sailing school is one of the oldest sailing schools in Germany and teaches the basics of



sailing in 11-day compact courses. With our many years of training experience, we impart extensive knowledge and practical skills quickly and comprehensibly. With us, even absolute beginners are able to operate a sailing boat safely and independently after just a few days. The advanced course offered and the individual training courses serve to consolidate and expand on what has been learned. Furthermore, our training programme includes the sailing licence for sports boats.

Find out more about what we offer and our current opening hours on our homepage at www.rurseezeit.de.



RurseeZeit

CONTACT: Rurseezeit

Schwammenauel 12a · 52396 Heimbach
Phone +49 (0) 2446/1497
info@rurseezeit.de
www.rurseezeit.de

opening hours

01.04.-01.11.2023, Tue.-Sun.: from 10 a.m.
During the NRW summer holidays:
Mon.-Sun.: from 10 a.m.



Water management in the Eifel

Close to nature in a boat, experiencing the beauties of the Rur Valley from the water



Wehebachstelle

Reasons for the construction of the dams

The dams of the northern Eifel are central cornerstones of tourism. This applies not only to the main lake of the Rur dam Schwammenauel, which allows many water sports activities, but also to the impressive wall of the Urfttal dam, the geographical heart of the Eifel National Park. However, the dams were not built for recreational purposes: The uneven discharge behaviour of the Eifel always had negative effects on the lower reaches of the rivers.

In the event of prolonged rainfall or snowmelt, the water on the karst rock quickly ran off. During low rainfall or dry periods, however, the lower reaches became rivulets.

The paper industry, which is strongly represented in the Düren area, was particularly affected. Their factories were often located near the river and they were dependent on an even flow of water in the river.

At the end of the century before last, the well-known hydraulic engineer Prof. Otto Intze was

commissioned to develop proposals for solutions. He proposed the construction of dams to tame the rivers and store water. At first, he himself had the Urft in mind, a very rich tributary of the Rur. From 1900 onwards, he had a wall built in a narrow valley on Mount Kermeter. This was connected with the construction of a power station near Heimbach-Hasenfeld to generate electricity from water power.



Geöffnete Grundablässe der Rurtalsperre





Blick auf die Urfttalsperre

Expansion of the dam landscape

Soon the growth of the population and increased hygiene requirements made the dams interesting also with regard to the drinking water supply. The consequence was the construction of further dams and, above all, before the Second World War, the large Rur dam Schwammenauel. It ensured sufficient water supplies for the growing paper industry.

The Second World War interrupted the construction of the dams and caused many war damages, but thanks to increasing needs, new dam projects were soon launched. At the beginning of the 80s of the last century, the construction of the water reservoir "Wehebachtalsperre" marked the end of the development of the reservoir landscape.

The Wasserverband Eifel-Rur operates the large dam constructions

The Wasserverband Eifel-Rur, (WVER) water board, is currently the operator of a large part of the dams. Above all, it owns the large dams, which serve several purposes at the same time: flood protection, storage of water for industry and drinking water treatment:

The Urft dam, storage volume 45.5 million cubic metres. Commissioned in 1905, it is the oldest dam in the northern Eifel.

The Rur dam Schwammenauel, 202.6 million cubic metres. It is by far the largest reservoir in the northern Eifel and was built in two stages: between 1934 and 1938, a filling volume of 100 million cubic metres was created, and a second expansion after the Second World War created the current volume from 1959.

The Olefthal dam in Hellenthal went into operation in 1959 with a volume of 19.3 million cubic metres. It is an architectural gem and was the only dam in Germany that was built from hollow cells placed side by side.



Rurtalsperre – Badestrand Eschauel



Das Jugendstilkraftwerk in Heimbach-Hasenfeld

In 1981 the **Wehebachtal** dam near Schevenhütte was added. It has a volume of 25.1 million cubic metres.

The list of WVER reservoirs also includes the reservoirs Obermaubach (completed in 1935, 1.65 million cubic metres) and Heimbach (1935, 1.21 million cubic metres). They are purely compensating reservoirs for the peak power plants of the upstream valley dams, which during the course of the day release only an uneven amount of water into the lower reaches via the turbines of the hydroelectric power plants.

Recreation on the WVER dams

A touristic use of the water areas is usually not possible, because especially dams, which are also used for the supply of drinking water, must

be protected. Water sports enthusiasts, on the other hand, find a home at the Rur dam Schwammenauel. There are two designated bathing areas for swimmers (Eschael and Neue Mitte Woffelsbach). Otherwise, the lake is available to sailors, surfers, paddlers, anglers, divers and Rursee shipping. Anglers need a fishing permit. All drivers of sports vehicles must have a recognised boat driving licence or surfing licence. Information is available at the tourist information points or directly from the Eifel-Rur water board (WVER).



Contact details and further information about the association,

which is also responsible for wastewater treatment, flood protection measures and the maintenance and natural development of running waters, can be found on the homepage www.wver.de.



Staumauer der Olefalsperre

Canoeing in the Rur Valley

Close to nature in a boat, experiencing the beauties of the Rur Valley from the water



Fun and sportiness is offered by the docile and very capsized-proof open twin-kayaks – ideal to learn canoeing within a short time. The canoeing school Petry offers canoeing on river Rur since 1990, boats and equipment is available for up to 140 persons. After a comprehensive theoretical instruction, the tour will start on river Rur in Heimbach with experienced canoeing instructors in small groups.

River Rur with its various eddies, barriers and small chutes is a popular area for beginners. The 14 km long section Heimbach – Zerkall requires ca. 4.5 hours, including a picnic break. In order to assure nature protection (breeding season for birds), the Rur may be cruised from 15 July to 28 February at a determined minimum level. Also the number of boats is restricted.

The boarding and arrival stations are located as close as 300 m to the stops of the Rurtalbahn railway route Düren-Heimbach – ideal to arrive with public transportation or park the car at the destination in Zerkall. The canoe house in Zerkall is an inviting place at the end of the Rur route. You can change clothes here, find protection in case of bad weather and good partners for your catering.

The Heimbach reservoir is open for canoeing all year round. Canoe trips on the almost stagnant water are pure relaxation. The water qua-

lity is excellent. Enjoy the lakeside with its various landscapes, changing with the course of the seasons. Swans and other water birds can be observed from an adequate space. The Art-Nouveau water power station of the year 1904 is seen over a long distance and may also be visited.

The canoe trip will be completed on the Heimbach reservoir, also in combination with a guided hike. A beautifully located barbecue site directly at the lake can be offered for a cozy get-together at the end (combination tour hiking/canoeing/barbecue). Both variants are very popular for a company outing.

Contact: Dustin Lenz

Buchungssystem: www.kanu-petry.de
Tel.: 01575-0175756

Organised trips / canoe rental:

Basically, all canoe group tours take place accompanied by experienced canoe instructor. Individual canoeists are arranged to small groups and also accompanied. Only those canoeists with sufficient experience may rent boats at the Petry canoeing school. Furthermore the school assists in the organisation of group tours or works outing, as for instance planning of the daily activities, arrival and departure, barbecue, lodging and guided hikes.



In the Water and on Land

The Rursee is for everyone. And more.



In the middle of the Eifel National Park, surrounded by unique natural scenery and unspoilt nature: the conditions for a perfect holiday experience can hardly be bettered than those on lake Rursee.

Cycling around the lake over 27 kilometres through the unique landscape, and with the lapping water always at your side. The tour can be extended to 42 kilometres, if one includes the lakes of Obersee and Urtsee. Naturally the trip would be much easier on a Pedelec.

These can be hired by the lake. Small tip: best to call ahead and reserve one. It goes without saying that the lakes can also be explored in a wonderful way on a walk along the shore.

A classic hike takes visitors across along the river Ufer. If you would like something more challenging, you could try the hike along the wooded heights where the water comes appears here and there between the trees and you can enjoy impressive views over the lakes.

And if you want to cut your walk short, you can simply hop onto one of the Rursee boats to the next station on the lake and put your feet up in one of the restaurants and cafés.

The lake resorts of Rurberg, Woffelsbach and Einruhr offer numerous possibilities for a relaxing break!



With so much water around, you can of course go for a dip, too. The Rurberg Rursee Centre attracts lots of people, especially on hot summer days. There you can relax on the large grass area or go for a refreshing swim in the lakeside resort. Families are particularly at home in Einruhr's nature adventure pool with its numerous attractions for children. And if you want to explore lake Rursee from the water, try your hand at stand-up paddling or simply hire a canoe.

It does not stop there: There is so much to discover at lake Rursee, especially for young people. Away from the big cities and the hustle and bustle of everyday life, you are surrounded by nature, fresh air, water, woods, adventure and relaxation, perfect for a trip with friends, youth groups and school classes. You can also sleep like a top in the new NabeDi youth village in the Bay of Woffelsbach. Its wide range of activities makes for a great and memorable stay by the lake.

Contact details: Rursee-Touristik GmbH

in the National Park Gate Rurberg
Seeufer 3 · D-52152 Simmerath
Phone +49 (0) 24 73/93 77 - 0
Fax +49 (0) 24 73/93 77 - 20

Opening times:

daily 10:00 a.m. - 5:00 p.m.
info@rursee.de, www.rursee.de



Natural outdoor bath Einruhr

Swimming in harmony with nature and a unique panoramic view



When the summer sun smiles down, mermaids of all sizes need pure and fresh water to enjoy. The family lido goes without any chlorine since the year 2006 – the water is cleaned microbiologically. Since years, the quality of the water achieves best values. The natural outdoor bath ensures untroubled fun splash.

Splashing for the kids, training rounds for non-swimmers, sportsmanship for experienced swimmers – the Einruhr natural outdoor bath meets any wish. The lawn offers space for recreation in the sun and a kiosk with a terrace is the right place for refreshment or a snack. A summer day can be nowhere more relaxing than in the Einruhr natural outdoor bath!

Einruhr Natural Outdoor Bath

Bathing fun for all in the family, season starts in June, depending on weather conditions. Information under Phone: +49 (0)2485/912929.

Einruhr Natural Outdoor Bath

Bathing fun for all in the family, season starts in June, depending on weather conditions. Information under +49(0)2485/912929.

Opening hours: 10 a.m. to 7 p.m.

Day tickets for adults 3.00 EUR

Day tickets for children from 3-15 yrs 2.00 EUR

10 % group rate from 10 persons up.

Discount. Free admission for children up to 15 years of age on their birthday.

The family fun pool

Swimming pool Eifelbad with giant slide



The Eifelbad has been one of the special attractions in Bad Münstereifel for many years. Visitors can expect a wide range of offers for the whole family or for sporting activities - and all at low prices. The Eifelbad offers almost 700 m2 of water surface with its numerous attractions and pleasant water temperatures, making it the perfect setting for a short daily holiday. Whether fun for the whole family or health-conscious exercise up to high-performance sports - everything is possible. A look at the varied range of courses for children and adults is just as worthwhile as a visit to the giant slide, which guarantees a 122-metre-long sliding pleasure all year round.

The recreational area with its 6,000 sqm sunbathing lawn and beach volleyball field offers enough space for a pleasant day at the Eifelbad.

Prices and opening hours

are always up-to-date on the website www.bad-muenstereifel.de. The current Corona hygiene rules can also be found on the website www.bad-muenstereifel.de

eifelbad
Das Familien-Spaßbad!

Contact: Eifelbad

Dr.-Greve-Straße 16 · 53902 Bad Münstereifel

Phone 0 22 53/54 24 50

info@bad-muenstereifel.de

www.bad-muenstereifel.de

Experience water at Urft and Olef

Whether sports, fun or relaxation - enjoy the cool water
in its various facets

Erlebnisfreibad Dieffenbach © Kerstin Wielspütz



The small river Olef crosses the Schleiden town area from south to north. In the Kneipp spa town of Gemünd, the Olef finally flows into the larger Urft and thus gave the town its name. Both in the Gemünd spa park and in the centre of Schleiden, seating steps directly on the banks of the respective river invite you to linger and take a break after a walk or a stroll through town.

In summer, the two outdoor swimming pools entice visitors with refreshment and bathing fun: The **Dieffenbach outdoor adventure pool** is only a few minutes' walk from the centre of Schleiden. A modern, heated outdoor pool with a swimmer's pool and an adventure pool awaits you. The attractions include a giant slide, a current channel and a children's paddling pool with slide as well as a mud playground for the little water rats. You can also work off some energy on the beach volleyball court or the street soccer field.

Opening hours during the outdoor pool season: Daily in good weather 9.30 a.m. - 7.00 p.m., in bad weather daily 9.30 a.m. - 10.30 p.m. and 6.00 a.m. - 7.00 p.m.
Contact: Dieffenbach outdoor adventure pool Im Wiesengrund - 53937 Schleiden Tel.: 02445 3231

Idyllically situated directly on the banks of the Urft, above the spa gardens, the **Rosenbad in Gemünd** invites you to take a dip in the cool



Rosenbad Gemünd © Kerstin Wielspütz

water. The large, heated pool with diving boards and slide offers plenty of space to romp around. A paddling pool and a mud area await the little bathers. For variety on land, there are many other sports facilities, such as a trampoline, a basketball hoop, table tennis tables and a beach volleyball court. **Opening hours** during the outdoor pool season: daily 09.00 a.m. - 7.00 p.m., the pool remains closed in bad weather.

Contact: Rosenbad Gemünd

Kurparkstraße - 53937 Schleiden

Tel: 02444 3143, info@rosenbad-gemuend.de
www.rosenbad-gemuend.de

Situated high above Urft Lake, the **Vogelsang swimming pool** is on the grounds of the former NS-Ordensburg. It has a one-metre board and a three-metre board as well as four swimming lanes that are also suitable for sporting competitions. The indoor swimming pool was built in the mid-1930s, and today an original three-metre-high wall mosaic above the pool serves as a memorial to the National Socialist era. **Opening hours:** Mon.-Fri. 07.00 a.m. - 08.00 a.m. - Mon., Tues., Thurs., Fri. 4:00 p.m. - 9:00 p.m., Wed. 4:00 p.m. - 6:00 p.m., Sat. from 2:00 p.m. - 6:00 p.m., Sun. from 9:00 a.m. - 5:00 p.m.. For holiday and public holiday opening hours, please see the homepage.

Contact: Vogelsang 44 · 53937 Schleiden,

Tel: 02444 914194

www.schwimmbadvogelsang.de
info@schwimmbad-vogelsang.de



Therme Euskirchen

Pure relaxation with a South Sea feeling.



Close your eyes and dream yourself into paradise under palm trees. In front of you lies the bright blue lagoon of the palm paradise, lined with colourful orchids. A paradisiacal place of well-being.

Dive into the crystal-clear, 33° warm water of the large lagoon and relax. On warm sunny days, the large convertible panorama roof opens and you can enjoy the unique South Seas atmosphere under the open sky. At the Beach Club with outdoor pools and textile sauna you can experience summer wellness with pure refreshment. Whether it's a cocktail at Paradise Beach or a relaxing trip through the many-sided sauna world - the spa has a lot to offer in summer and winter.

Welcome to paradise.

Escape from everyday life and enjoy your time out. The Palm Paradise (admission from 16 years, infants up to 3 years free, family Saturday without age restriction) invites you to relax under more than 500 South Sea palms on one of the many bubble loungers, to recharge your batteries in the health springs or to be gently pampered by the massage jets of the large lagoon. Whether you let yourself drift in the large lagoon or enjoy a fruity cocktail at the pool bars.



(wear) you will experience intense moments of well-being.

Eleven themed saunas and the steam baths pamper the senses with aromatic scents and special infusion ceremonies. Whether it's the spells of antiquity, the path to the Orient, a mystical journey, greetings from the Far East, mighty natural stone or the rustic forge hearth - let yourself be taken on a very special journey of relaxation. The soothing warmth of the sweat baths is followed by refreshing cooling down under the impressive calla blossom shower, in the crystal water pool or in the plunge pool.

Enjoy a varied wellness programme 365 days a year that brings body, mind and soul into harmony - at your place of well-being under palm trees.



CONTACT: Therme Euskirchen

Thermenallee 1 (Stresemannstraße 999)

D-53879 Euskirchen -

Tel. +49 (0)2251-1485-0

info@badewelt-euskirchen.de

Ticket booking and vouchers online via the website www.badewelt-euskirchen.de.



The stylish sauna world welcomes you with its openness and unique atmosphere. In the Vitaltherme & Sauna (from 16 years, without swim-



Gemünd Rosenbad Bath in the Spa Park

Relax and have fun



The spa is idyllically located, surrounded by Eifel forest in the Gemünd spa gardens. It can be easily reached on foot in 5 minutes from the centre of the village. A large number of parking spaces are within walking distance.

A large **50-metre pool with slide and diving boards** and a beautiful oval paddling pool with a water mushroom invite you to swim and play. The bathing water is heated. A beach volleyball court, a height-adjustable basketball hoop, a ground trampoline and two table tennis tables are available for sports enthusiasts. A special highlight for children is the „Little Seagull“ mud area where they can play with sand and water to their heart's content. In our kiosk with sun terrace we offer hot and cold food and drinks. Since this year, the Rosenbad bath offers barrier-free access to the water, so that visitors with disabilities can easily get into it. The entire bath is step-free and barrier-free.

Contact: Rosenbad Gemünd

Footpath over the Urft bridge at the Kurhaus

Opening hours: 9.00 a.m. to 7.00 p.m.

The pool remains closed in bad weather

Tel. +49 (0) 2444 / 3143

www.facebook.com/rosenbad

www.rosenbad-gemuend.de

Rosenbad · Gemünd



The heated open air pool in Heimbach

Fun, sport and recreation for the whole family



Heimbach's heated open air pool is located directly on the Rur in the Eifel national park. Great for families, with a water temperature of 24°C and spacious grounds it offers its visitors a large pitch for sports/activities. Whether you want to spend your leisure on the sunbathing meadow, in the 25 x 12.5m swimming pool with its diving area, swim your laps, play beach volleyball or table tennis with your friends... you'll find plenty on offer here!

In the splash pool, a splash shower and a fun fountain ensure bathing fun and refreshment with water depths of 15-45 cm over three pools. The 678m², kidney-shaped non-swimmer area is somewhat more turbulent. The spaces on the island are highly sought after. Footballs, volleyballs, table tennis balls, table tennis bats and diving rings can be borrowed from the pool free of charge. In the swimmer's shop, visitors not only can buy clothing for swimming in, but water toys as well.

Contact: Open-air pool Heimbach

www.freibad-heimbach.de

Auf Wissen Woog ·

Phone +49 (0)2446 3196

Opening hours:

Depending on the weather from May to September. The actual opening hours vary depending on the weather and can be seen at www.freibad-heimbach.de from the start of the season.



Indoor pool Stolberg

Let your mind wander in barrier-free sports center



The indoor swimming pool in Stolberg is worth a visit: In addition to the 400 sqm large and 28 °C warm swimming pool, the non-swimmer area offers a water temperature of 32 °C, especially for the younger guests, and with 128 sqm plenty of room to splash around. Adults can relax in the pool while the children romp around in the warmer water. The special highlight is the fun pool on Friday. Water toys such as balls, air mattresses, water animals etc. are very welcome. Running mats and slides are provided by the indoor pool. A paradise for little water rats! So that everyone can enjoy the fun of bathing without any problems, the entrances, changing rooms, toilets and the entrance to the pool are barrier-free.

Contact us: Indoor swimming pool - sports centre Glashütter Weiher

Schafberg 1 · 52223 Stolberg

Phone +49 (0)2402 91027

www.stolberg.de

Opening hours: Mon-Fri 6.00 a.m. - 8.00 a.m., Tues 1:00 p.m. - 5:00 p.m., Wed + Thu 1:00 p.m. - 10:00 p.m., Fri 1:00 p.m. - 2:00 p.m. (senior citi-zens), 2:00 p.m. - 3:00 p.m. (women's hour), 3:00 p.m. - 7:00 p.m. (fun bath in the family pool) Sat. 8:00 a.m. - 6:00 p.m., Sun. 8:00 a.m. - 2:00 p.m. During the holidays additionally: Mon - Fri. 8:00 a.m. - 1:00 p.m. entrance fees: Adults: 4:00 Euros, school children/teenagers/children from 6 years: 2.50 Euros, accompanying persons free admission

Düren bathing lake

Fun and recreation for the whole family!



„Fancy a swim and more..“ - can be found at the beautifully situated Düren bathing lake. With its long sandy beach and best water quality, the lake promises great relaxation for the whole family. Enjoy your little beach holiday actively on a **SUP**, in a **kayak** or comfortably on a **pedal boat**. The **diving tower or jumping cushions**, the water running balls or the beach volleyball courts promise lots of fun and action, and there is also a lot to discover in the Luna water park for the very young guests.

Wakeboarders and water-ski fans will get their money's worth at the new large „DOCK5“ facility. More information at www.dock5.eu musical highlights, such as the Nibirii Festival in August, will not be missing at the lake in 2023. Dürener Service Betrieb and its partners are looking forward to a new sunny season with lots of good-humoured guests.

Contact: Dürener Service Betrieb,

Tel. +49 (0)2421 / 94 34 0, www.dn-sb.de

Badesee@dn-sb.de, Dürener Badesee,

Tel. +49 (0)2421 / 6 39 11

Waterski Düren „Dock5“,

Tel. +49 (0)152 53770444, dock5.eu

Address Dürener Badesee:

Am Badesee 1, 52351 Düren-Gürzenich

Opening hours:

15 May- 15 Sept, 9 a.m. to 9 p.m.

At moderate weather you can

find the daily opening times on our hotline.

Tel. +49 (0)2421 / 63911 or in the Internet



Water fun in the region

Monschau and Simmerath



For swimming enthusiasts there is the charming yet functional 25-meter pool with four lanes, a springboard and three-meter diving tower. There is a beginner's swimming pool for those to take their first strokes and where non-swimmers can splash. A children's wading pool with a small slide promises the youngest swimmers will have great time. Saturday children's playing hour. Barrier-free!

VENNBAD

Wilhelm-Jansen-Straße 1
52156 Monschau · Tel. +49 (0)2472 - 8024930
www.monschau.de

Close on monday

Tuesday

11.00 bis 11.45 Aqua Fit
15.00 bis 18.30 Family swim

Wednesday

15.00 bis 21.00 Family swim
18.30 bis 19.15 Aqua Fit

Thursday

06.30 bis 08.00 early swim
15.00 bis 16.00 Adult swimming
16.00 bis 21.00 Family swim
18.30 bis 19.15 Aqua Fit

Friday

15.00 bis 21.00 Family swim
18.30 bis 19.15 Aqua Fit

Saturday

13.00 bis 18.00 Family swim
14.00 bis 17.00 Waterfun

Sunday

09.00 bis 18.00 Family swim



Go swimming again! Newly opened in 2012, SimmBad allows you to take relaxed laps while the kids frolic in the heated water. Amongst the three different pools everyone is bound to find their favorite spot.

And on weekends the lifeguards fill the competitive pool with all kinds of water toys. Simply come and enjoy bathing without any time limits. Handicap accessible.

SimmBad

Walter-Bachmann-Str. 38
52152 Simmerath · Tel. +49 (0)2473-1295
www.simmerath.de

Close on monday

Tuesday

06.30 bis 08.00 early swim
16.00 bis 21.00 Family swim

Wednesday

06.30 bis 08.00 early swim
16.00 bis 20.00 Family swim

Thursday

06.30 bis 08.00 early swim
08.00 bis 11.30 Family swim
16.00 bis 21.00 Family swim

Friday

06.30 bis 08.00 early swim
15.00 bis 21.00 Family swim

Saturday

09.00 bis 10.00 Women's / girls' bath
10.00 bis 13.00 Family / play pool
13.00 bis 14.30 Family / play pool

Sunday

08.30 bis 12.00 Family swim
15.30 bis 18.30 Family / play pool



monte mare Rheinbach

Relaxation straight
from 1001 Nights



At monte mare in Rheinbach, in addition to a large leisure and adventure pool, guests can experience a splendid and comfortably arranged sauna area with a varied wellness programme.

The leisure pool is not only a paradise for water-loving youngsters. A large wave pool, as well as slides, whirlpools and a sports pool mean the monte mare can offer just the right fun factor for the whole family. A real highlight is the unique indoor diving centre, offering scuba diving or beginner courses. On the other hand, if you are looking for peace and relaxation, you have come to the right place in the sauna paradise with its oriental theme. Various saunas as well as herbal, steam and mud baths help you to perspire in a relaxing and healthy way.

There are relaxing massages, exotic steam bath ceremonies and other exclusive arrangements. All these different wellness and beauty offers complete your time off from everyday life to perfection.

monte mare Rheinbach

Münstereifeler Straße 69 · 53359 Rheinbach
rheinbach@monte-mare.de
Phone +49 (0)2226/9030-0

Opening times of the Saunaparadies:

Monday to Thursday from 9.00 am-11.00 pm
Friday and Saturday 9.00 am to midnight
Sunday and public holidays 9.00 am-9.00 pm

monte mare Kreuzau

Vacation without
a suitcase



Das **monte mare Kreuzau** invites you to spend your holiday on your doorstep with a wide range of leisure and relaxation activities.

The large leisure pool offers bathing fun for the whole family. No matter whether it's a toddlers' pool, wave pool, tube slide or 25-metre pool: under the impressive glass domes, guests splash and swim as if they were in the open air. The large pirate ship for climbing and sliding is also impressive. Numerous water cannons and spray nozzles ensure unlimited fun for little pirates. If you like it quieter and just want to spend a few relaxing hours in a cosy atmosphere, the textile wellness area or the cosy sauna landscape is the perfect place for you. Various theme saunas, cosy relaxation rooms and a rustic sauna garden invite you to do nothing.

Selected treatments from different countries and cultures pamper the guests. All wellness treatments can also be booked without sauna admission.

monte mare Kreuzau

Windener Weg 7 · 52372 Kreuzau,
kreuzau@monte-mare.de
Phone +49 (0)2422/9426-0

Opening Times Saunaparadies:

Monday to Thursday from
10.00 a.m. – 23.00 p.m.
Friday and Saturday 10.00 a.m. – midnight
Sunday 10.00 a.m. – 21.00 p.m.

EifelLoops & EifelTracks

really.good.hiking!
The new North Eifel Hiking World



The beautiful and varied landscape of the northern Eifel with its hilly countryside, wooded areas alternating with meadows and wide open spaces, babbling brook valleys and the flat Börde landscape (fertile plain) makes the heart of every hiking enthusiast beat faster. Whether it's a leisurely hike or a challenging route - the new EifelLoops and EifelTracks offer the right hiking experience for every taste.

The EifelTracks (EifelSpuren)

Embark on a unique voyage of discovery on the specially staged and themed (quality) circular hiking trails in the northern Eifel, the EifelTracks. Whether „Knights, Romans, Turnips“, „In the Footsteps of the Robber Barons“ or „Tuscany of the Eifel“. There is much to discover for young and old on a total of 18 Eifel trails. Some of the trails, like some of the EifelLoops, are also suitable for off-road prams.

The EifelLoops (EifelSchleifen)

A total of 95 EifelLoops, the local circular hiking trails, offer the most diverse opportunities to explore the North Eifel in hiking boots. Before you start hiking, you are spoilt for choice. The tours vary in difficulty and therefore are also suitable for different tastes. This makes it possible to

go for walks, shorter hikes, but also challenging tours with a few metres of altitude to master.

Gapless and systematically marked

The 95 EifelLoops and 18 EifeTracks are laid out as circular hiking trails, so that your hike is easy to plan. In many cases there is a railway connection and a North Eifel cycle and hiking station nearby. All tours are equipped for you with marker signs, which are placed „on sight“ in the terrain.

Directional arrows on the markers also indicate the exact course of the trail. The EifelLoops and EifelTracks are therefore almost untraceable for you. Let yourself be inspired: www.eifelschleifen.de or www.eifelspuren.de



Eifel Schleifen & Spuren

Contact and booking office:

Nordeifel Tourismus GmbH

Bahnhofstraße 13 · 53925 Kall

Tel.: + 49 (0) 24 41 99 457 - 0

Fax: + 49 (0) 24 41 99 457 - 29

info@nordeifel-tourismus.de

www.nordeifel-tourismus.de



EUROPÄISCHE UNION
Investition in unsere Zukunft
Europäischer Fonds
für regionale Entwicklung



Sustainable adventure region

Close by. Far away! The North Eifel



Not far from the big cities in the Rhineland, you can immerse yourself in a different world in the North Eifel. This is ensured by unspoilt nature, cultural treasures, an often sparkling starry sky and the cleanest air in Germany. Because the region also thinks about tomorrow, it can call itself sustainable.

Direction for one day or longer

You can write the script for your day trip or holiday yourself. Let yourself be inspired. Explore the wilderness of tomorrow on narrow paths in the Eifel National Park. Or relax on a paradisiacal day under palm trees or on a leisurely shopping spree in the City Outlet in Bad Münstereifel.

Satisfy thirst for knowledge and culture

The eventful past makes encounters with the Romans, the Middle Ages and the time of industrialisation possible in a small space. Even if it is hard to believe, leaps back in time are possible here. In addition to well-known places such as the LVR open-air museum in Kommern, the historic castle town of Kronenburg or Vogelsang IP, it is the unknown treasures that will surprise you.



Just go for it

In the Eifel National Park, the primeval forest of tomorrow, rangers can tell you amazing stories about flora and fauna.

Hikers on the 113 EifelLoops & EifelTracks or the classics such as the Eifelsteig, AhrSteig and the



Römerkanal hiking trail know that the North Eifel has even more to offer.

Pedals instead of horsepower

For those who prefer a more comfortable ride, choose one of our river cycle routes or the water castles route. The new bike hub system offers plenty of choice and a flexible route design depending on your mood. Sporty, ambitious cyclists can conquer the Eifel high-altitude route or master the MTB route network „Freifahrt Eifel“ on a mountain bike.

Family time

School holiday? Weekend? Holiday time? Pick up your children and come to the North Eifel! Because there's lots to discover here - at any time of the year and in any weather.



Holiday advice & booking office Nordeifel Tourismus GmbH

Bahnhofstraße 13 - 53925 Kall
Phone +49 (0)2441. 99457-0
info@nordeifel-tourismus.de
www.nordeifel-tourismus.de
www.facebook.com/NordeifelTourismus

GästeCard

Adventure Region Eifel National Park – environmentally friendly & holidays without traffic jam



Welcome in the Adventure Region Eifel National Park!

This wonderful region comprises of Monschauer Land (City Region Aachen), Northern Eifel (district Euskirchen) and Rureifel (district Düren) and it offers a great number of special nature and cultural experiences.

With the **GästeCard** Adventure Region Eifel National Park you cannot only go on a free and environmentally friendly adventure trip by means of public transport (ÖPNV), you are also granted a discount or additional performances at participating sights and leisure time facilities.

GästeCard Adventure Region Eifel National Park

As a guest, participating overnight accommodations provide you with the free GästeCard for the duration of your stay. Within the adventure region and the whole area of the Verkehrsverbund Rhein-Sieg (VRS) and the Aachener Verkehrsverbund (AVV) you can make free use of busses and trains.

At early booking you will get your ticket already before your stay so that you can use it for your arrival in the VRS and AVV-area, e.g. with the local trains of the Deutsche Bahn from Cologne. Besides the ÖPNV-ticket, you save hard cash with the GästeCard by reduced entrance fees at the participating excursion destinations. Which hosts provide the GästeCard?

An overview of the participating overnight accommodations is found under www.erlebnis-region.de.

What kind of discount is granted by which partners?

The participating sights and leisure time facilities are listed with their offered reduction or their additional performances under www.erlebnis-region.de.

Advantages of the GästeCard at a glance

- Environmentally friendly, economical journey into your holidays without traffic jams
- Free arrival and all drives with busses & trains in the Aachener Verkehrsverbund (AVV) and Verkehrsverbund Rhein-Sieg (VRS)
- Free drive with the ÖPNV during your holiday in the Adventure Region Eifel National Park, e.g. to the National Park Gates, cycling & hiking tracks, sights, leisure time facilities...
- Free use of busses & trains for drives to Aachen, Bonn, Düren, Euskirchen and Cologne
- Attractive reductions and additional performances in numerous sights and leisure time facilities.



www.erlebnis-region.de



Forest bathing in the North Eifel

See and hear, feel, smell and taste the forest



Do you sometimes wish you could switch off the „thinking carousel in your head“?

To push away stress and deadline pressure, to find yourself, to have silence and peace around you? If you can answer these questions in the affirmative, then forest bathing in the Northern Eifel is just right for you. The forest is there without any pressure of time or expectation. It welcomes you as soon as you enter with its friendly silence, the many shades of green, its diverse scents, its good air and invites you to linger, simply BE THERE. Forest bathing uses the healing power of the forest on body, mind and soul through mindfulness exercises, gentle movements and concentration on the opening of all senses. You stroll through the forest with no intention or aim and get to know the effect of stopping - staying - breathing - lingering.

Immerse yourself in wild nature, let yourself drift and do something good for your health:

forest bathing has been proven to have a positive effect on the cardiovascular system, reduces stress, strengthens the immune system and is simply fun. „Shinrin Yoku“ - „a conscious stay in the forest, immersing all your senses in the unspoiltness of the forest“ is what it is called in Japanese, where the origin of forest bathing comes from. In Japan, forest bathing is part of health care and is even available on prescription.

Recharge your batteries in the soothing atmosphere of the forest. Playfully experience



the wonderful world of trees with all your senses. The senses have to do with birdsong, sunbeams and raindrops. Looking into the distance and feeling nature are components of forest bathing, where mindfulness exercises are integrated and forest knowledge is imparted.

What does forest bathing look like in concrete terms?

Participants listen to the babbling brook, breathe deeply in the air of the coniferous forest and experience the mixed deciduous forest with all their senses - seeing, hearing, smelling, feeling or tasting. Appropriate exercises awaken intuition and give impulses on how to take valuable breaks in everyday life and strengthen your defences. Elke Greven offers forest sensations for couples and individuals, families with children, friends and teams - individually tailored to you, with an overnight stay in the holiday flat if desired, or as a public event with up to eight people.

Wald Spürungen

Elke Greven

Schnorrenberg 75 · 53940 Hellenthal
Tel. 0179-7814600
eifelferien@elke-greven.de
www.waldbaden-nordeifel.de



Plannable leisure fun

Cycling, hiking, enjoying nature. Discover the many facets of the StädteRegion Aachen



© Anton Röser, Eifel Tourismus GmbH

Located in the border triangle in the immediate vicinity of the Netherlands and Belgium, the StädteRegion Aachen, the westernmost corner of Germany, exudes a very special border atmosphere. Immerse yourself in the exciting mixture of impressive landmarks such as mining slagheaps, picturesque reservoirs and wild, romantic High Fens and let yourself be enchanted by the charm of the old imperial city of Aachen with the UNESCO World Heritage Aachen Cathedral. Numerous cycle and hiking paths offer fantastic opportunities to discover the diversity of the urban region on foot or by bike.

In the regional cycle and hiking route planner (www.staedteregion-aachen.de/rouutenplaner), guests can obtain comprehensive information on the most beautiful cycle and hiking routes in the urban region of Aachen. Maps, places of interest, degree of difficulty, elevation profile or arrival and departure tips for approx. 400 routes can be conveniently called up and bundled and printed out at home as a PDF file. For users of navigation devices GPX files are available for each route as download.

The cycle and walking route planner is supplemented by the StädteRegion Aachen's tours app, in which the information on the routes described above is also available and displayed in a zoomable, topographical map. Like a travel

guide, the app uses GPS positioning to navigate through the region and provides information about places of interest and places to stop for refreshments along the routes. All tours and the map can be conveniently stored offline, so that a mobile phone network is not necessarily required on the tour.

The free application can be installed on Apple iPhones, Apple iPads and on smartphones with the operating system „Android.“ To do this, open the iTunes App Store or the Google Play Store on your smartphone and simply search for „StädteRegion Aachen.

Contact: StädteRegion Aachen

Zollernstraße 10
 52070 Aachen
 Phone +49 (0)241/5198 2177
 Fax: +49 (0)241/5198 82177
fahrrad@staedteregion-aachen.de
www.staedteregion-aachen.de

iOS Android



RurUfer-Cycle Path

Three countries – one river



© Stratmann



© Stratmann

From its source in the High Fens in Belgium to its mouth in Roermond in the Netherlands, the RurUfer Cycle Path over about 180 kilometres leads through varied natural areas, enclosed historic town centres and idyllic landscapes. Starting at the viewing platform „Signal de Botrange“, the highest point in Belgium, the guest heads for the old clothmaker town of Monschau after passing through wooded sections. With the Rur always to one side, the Eifel lake district and the Eifel National Park spread out before the visitor from Einruhr onwards. Through unique landscapes, such as the Jülicher Börde and the Indeland, the further course on the last stage through the Heinsberger Land to the Netherlands is also very cycle-friendly.

In addition to the natural highlights, there is much more to discover: Explore tranquil villages in the extensive wetland “Rurauen” and exciting museums in the Heinsberger Land. Enjoy the flair of the old town of Monschau and experience the rural change in the indeland. Castles, palaces and red sandstone cliffs between Heimbach and Jülich offer the opportunity for interesting stops.



Within the framework of the ERDF-supported project „Raderlebnis Rur“, the river cycle path has been expanded and made more attractive in the past two years in order to offer cyclists an even more attractive route.

This year, the RurUfer Cycle Path finally shines in new quality. In addition to fascinating natural landscapes, visitors can look forward to exciting adventure stations and stories along the cycle path, which turn a cycle tour through the far west into a unique adventure through the ages.

Follow contemporary witnesses from the past and present that give voice to the changes in the natural and cultural landscapes along the river.

You can already explore the RurUfer Cycle Path before your journey on the newly designed home page www.ruruferradweg.de



Contact:

Rureifel-Tourismus e.V.

Tel. +49 (0)2446-80579-0
 info@rureifel-tourismus.de
 info@ruruferradweg.de



EUROPÄISCHE UNION
 Investition in unsere Zukunft
 Europäischer Fonds
 für regionale Entwicklung

Vennbahn Cycle Route

... One of Europe's longest converted railway embankment bike tracks



The Vennbahn Cycle Route between Aachen and Troisvierges in the North of Luxembourg - crossing the unique high moor "Hohes Venn" - with its 125 kilometres belongs to the longest railway embankment bike tracks in Europe.

It is virtually symbolic for a piece of Europe where the pulse of developments of the continent have always been particularly noticeable; originally a connection between coal mine districts in the North and steelworks in the South, then artery in the conflict zone of two World Wars, after that fallen into oblivion and today one of "Europe's new green routes", which has filled the cross-border region with new life.

The Vennbahn knows many stories! Experience a special kind of border-land flair, after conventional borders have fallen and cultural variety can be experienced in a small territory without barriers.

The Vennbahn is a special connection:

- It connects two three-country-points: that of the Netherlands, Belgium and Germany in the North and that of Belgium, Germany and Luxembourg in the South;
- It is embedded between the respectively highest hills of three countries: the hills Vaalserberg (the Netherlands), Signal de Botrange (Belgium) and Kneiff (Luxembourg);



Ev.Brücke am Roten Haus © Eisenschink

- It had already been awarded several times and this years it has been graded by the ADFC as quality cycling track with 4 stars.
- Free Tour-Apps of the Vennbahn (Apple Store/ Google Play Store) and Städtereion Aachen (Google Play Store, search word: Städtereion)
- Stops on the Rurufer cycle trail: Eifelhöhenroute, Kyll-Radweg, Eifel-Ardennenradweg

For further information about on the different legs of the journey, services, accommodation and transfers, please visit: www.vennbahn.eu



Monschau-Touristik GmbH

Stadtstr. 16
D- 52156 Monschau
Phone+49 (0) 2472/80480
touristik@monschau.de

Tourismusagentur Ostbelgien

Hauptstraße 54
B- 4780 ST.VITH
Phone +32 (0) 80 22 76 64
info@eastbelgium.com



Bicycle Action Days

In addition to numerous cycle routes, the cycle-friendly district of Euskirchen has two attractive cycling events to offer



It goes on in the Ahr valley!



Sunday, June 18

Between 10 a.m. and 6 p.m.

The popular Tour de Ahrtal continues, not least because of the car-free section on the B258 from Blankenheim, where you can experience the upper Ahr valley in a completely different way. A variety of activity points along the route offer catering and a colourful programme for young and old. In addition to the highlight of the closed road, there are two „discovery tours“ that can be used as alternative routes:

The discovery tours „On the tracks of the Ahr and Eifel“ and „On the tracks of the Kalkeifel“. There are wonderful views to enjoy here, and not just on the day of the cycling action day. No matter which route you choose: This day is a special experience!



Boundless cycling pleasure between NRW, RLP and Belgium



Sunday, August 13

Between 10 a.m. and 6 p.m.

This cycle path convinces with its flat route, as it runs along a former railway line. This makes it particularly suitable for families and you can enjoy the nature along the way without much effort.

On the action day, there will be numerous action points with many attractions along the approx. 40 km long route between Jünkerath and Büllingen. You might even feel like taking a refreshing dip in Lake Kronenburg or be lucky enough to spot some water buffaloes or alpacas. One thing is for sure: the Kyll Cycle Path is a „round thing“ in many respects.



Further information under: www.tour-de-ahrtal.de · www.grenzenlos-kyllradweg.de
Cycle paths in the district: www.radrouten-kreis-euskirchen.de



Discovery tours

On foot and by bike through the Rur-Eifel in the district of Düren



© Dennis Stratmann / Kreis Düren



© Dennis Stratmann / Grünmetropole e.V.

The Rur-Eifel is characterised by its narrow stream valleys, steep slopes with bizarre rock formations, moors, species- and flower-rich pasture landscape and its magnificent views of the valleys, Börde and Rhine valley. This topography offers ideal conditions for hikers and cyclists who love the ups and downs of the mountains. The well-marked network of hiking and cycling trails leads to many a hidden gem and, like the tranquil Eifel villages with rest and refreshment facilities, paves the way for deceleration.

Not only the RurUfer cycle path, the moated castle route and the red sandstone route, which show you the way with their own tour logos, but also other cycle and hiking tours lead you through the Rur-Eifel region. The starting points of the tours can be reached in an environmentally friendly way by bus and train.

The „**Rursee Circuit**“ is a bit up and down, but for the most part off the beaten track, along the water, through the Eifel National Park and the villages around the lake. On hot days, bathing opportunities such as the Eschael bathing beach provide cooling on the way. And if you



stay there longer and don't feel like pedalling any more, you can take a short cut with the Rursee boat trip.

Start and finish: Heimbach railway station, Rurtalbahn line Düren-Kreuzau-Heimbach Route length: approx. 34 km | Ascent: Approx.. 383 m | Descent: approx.. 383 m

Detailed information incl. GPX data for download (please scan QR code).

The hiking tour „**Buntsandsteinfelsen im Rurtal**“ (red sandstone rocks in the Rur valley) runs mostly along winding, natural paths and offers numerous views of the Obermaubach reservoir, the Rur valley and the Eifel mountains. The highlight of this hike is the historic old town of Nideggen with its castle. It was once the seat of the counts and dukes of Jülich and was considered impregnable in the Middle Ages. Start: Obermaubach railway station,

Rurtalbahn Line Düren-Kreuzau-Heimbach
Destination: Abenden railway station,
Rurtalbahn line Heimbach-Kreuzau-Düren
Route length: approx. 15.5 km |

Ascent: approx. 497 m | Descent: approx. 465 m
Detailed information incl. GPX data for download (please scan QR code).

The leaflets with numerous cycling and hiking tour tips are available free of charge at the tourist information offices in the Rur-Eifel region, at the iPunkt in the city of Düren and at the Düren district administration.

CONTACT: Düren district

Bismarckstraße 16 - 52351 Düren
Fon +49 (0) 2421 220
tourismus@kreis-dueren.de
www.tourismus.kreis-dueren.de



Long-distance hiking trail East Belgium

The Fens Trilogy:

an exciting hiking adventure in three acts

Holzstege im Hohen Venn © Chris Eyre Walker



The **Fens Trilogy** is a new quality-assured long-distance hiking trail that connects the most beautiful landscapes of East Belgium. The 109 km long hiking route leads from the border triangle of the Netherlands, Germany and Belgium north of Kelmis to Bütgenbach am See. In Kornelimünster there is a connection to the Eifelsteig hiking trail. Interesting stories and three different landscapes await the hiker and language borders are crossed several times.

The foothills of the Venn in the north are gently rolling. The pastureland, surrounded by hedges, has a 'very British' feel to it. Proud moated castles, fortresses and palaces lie directly along the way. The moated castle in Raeren houses an interesting pottery museum. Raeren potters exported their stoneware all over the world. In Eupen, seat of the government of the German-speaking Community, magnificent patrician houses bear witness to the wealth of the former clothiers.

The route leads uphill, partly via typical wooden footpaths, to the heart of the **Fens Trilogy**: the High Fens nature reserve. The High Fens is one of the last and largest raised bogs in Europe. Rare animal and plant species appreciate the harsh climate and find their habitat here. These include the black grouse, a rare and endangered bird species. At the highest point of Belgium, the Signal de Botrange,



Einheitliche Beschilderung der Venntrilogie © Chris Eyre Walker

the hiker awaits a breathtaking panorama of the untouched moorland.

The descent leads through the southern **Fens landscape**, which is characterised by gorges and wild stream valleys. Past Reinhardstein Castle, the route descends along the Warche to Malmédy. This convivial Ardennes town was once the heyday of the leather and paper industry. The route continues upstream to Bütgenbach am See, a cosy mountain village. This is where the hiking adventure ends.

The long-distance hiking trail Fens Trilogy can be comfortably hiked in 6 day stages. The tourism agency offers hiking packages without luggage. Hikers stay overnight in comfortable accommodation. East Belgium's hosts spoil you with regional cuisine in the evening, provide picnics along the way and transport your luggage to the next stage on request.



Ostbelgien
Communauté de l'Est - Communauté



Further information

Tourism Agency East Belgium

Hauptstraße 54
B-4780 Sankt Vith
Phone +32 80 22 76 64
info@ostbelgien.eu
www.ostbelgien.eu



Balloon ride

Discover the world from above



Experience a weightless journey over the Eifel together with the balloon team. Enjoy the peace and quiet and the feeling of carefree freedom. A balloon ride is a real experience of nature that gives you a completely different perspective on everyday life. Floating almost silently and gently guided by the wind, not knowing where the journey will lead. At an overflight altitude of up to 1000 metres, you can still recognise quite a lot on the ground: for example, the tops of the trees, rabbits in the fields or the hustle and bustle in the villages. And anyone who has ever flown towards the sunset will certainly not forget these magnificent landscape images. After landing, the traditional baptism of the balloonist takes place and afterwards the experience can end with a glass of champagne.

And of course, a balloon ride makes a great gift. Good to know: The ticket money is secured by Rursee-Touristik GmbH and is only paid to the airline after the flight.

Further information and advice:



Rursee-Touristik GmbH

Phone: 02473-937711

ballonfahrten@rursee.de

www.rursee.de

Counselling and booking hours weekdays:

10:00 a.m. to 01:00 p.m. and

01:30 p.m. to 04:00 p.m.

Centre House Ternell

Discover, learn, relax and enjoy – all this at House Ternell.



The Centre for Environmental Education and Sustainability is idyllically located in the middle of the Hertogenwald forest, in the immediate vicinity of the Weser Dam and the Hautes Fagnes, the largest nature reserve in Belgium. The protection of our environment and a sustainable way of life are close to our hearts. We also want to inspire our guests with these themes. We offer a wide range of activities for young and old:

- Guided walks through the nature reserve.
- Training to become a nature guide, beekeeper or mushroom expert.
- Offers for school classes on site and at school. We are happy to help with the development of nature and environment-related school projects.
- Children's birthday parties.
- Holiday camps for children.
- Workshops and lectures

There is something for everyone here. Just give us a call or drop by. We will be happy to advise you.

Centre House Ternell

Centre for Environmental Education and Sustainability

Ternell 2-3 · B-4700 Eupen | Belgium

Tel. +32 (0)87 55 23 13

info@ternell.be

www.ternell.be Facebook:

Naturzentrum HausTernell/CRIE Eupen



Wilderness-Trail

Four stages - 85 kilometres:
A hike in the Eifel National Park



© G. Priske

The individual stages present the entire scenic diversity of the Eifel National Park. Rushing brooks, fragrant flowers, deep forests and wide panoramic views - that's how diverse and inspiring tomorrow's wilderness is.

The route runs from the south of the large protected area near Monschau-Höfen to the north near Hürtgenwald-Zerkall.

The first stage from Höfen to Einruhr is not only the most challenging and longest route, but also the one with the most metres in altitude. Particularly attractive are the natural forest cell „Im Brand“, the beginnings of the vast Dreibern plateau, the adventurous high-level trail near Hirschrott and the idyllic Erkensruhr valley.

The second stage of the tour leads over narrow paths along the Obersee with wonderful views over the Dreibern plateau and the lake landscape from Einruhr to Vogelsang and on to Gemünd.

On the third stage the Kermeter is wandered through. This part between Gemünd and Heimbach was the decisive reason for the designation of the National Park. Between the majestic, centuries-old beech trees you can feel the perfection and the everlastingness of nature.



© P. Stollenwerk

The last and shortest stage of the wilderness trail runs from Heimbach to Zerkall. The picturesque Schlehbachtal valley is just as fascinating as the diverse mixed forest with its high stock of gnarled oaks.

You can then return to the starting point with the Rurtal-Bahn Railway and the Trail-Express, which brings the wilderness trail hikers back to Monschau-Höfen on advance booking.



The symbol of the wild cat accompanies the hikers on their way.

Contact:

Monschauer Land Touristik e.V.

Seeufer 3 · 52152 Simmerath

Phone +49 (0) 2473/937717

info@wildnis-trail.de

www.wildnis-trail.de

www.monschauerland.de

Our tip: The Wellness Package for the Wilderness Trail includes

4 hiking days and 3 nights with breakfast at certified National Park hosts incl. National Park hiking map, hiking guide (book), hiking pass, Wilderness Trail pin and certificate from 199 Euros per person. Also available as a gift voucher. All information on booking at www.wildnis-trail.de

Endless vastness and peace

Discover the Börde landscape (fertile plain) of the Rur-Eifel with its panoramas and paths



The fertile plain of the Rur-Eifel, called Börde landscape, is much more than just a stopover on the way to the Eifel National Park or the surrounding urban centres. It is a treasure in itself. Being on the road in it means feeling its gentleness and vastness. Only a few compact villages are scattered in the undulating, open landscape.

Börde views

Where the Eifel merges into the fertile Lower Rhine bay, there are doubtlessly no far-reaching views. Six Börde views make this panorama a conscious experience. The viewpoints below will explain to you exactly what lies in the distance, which villages, churches or industrial buildings help to shape the landscape.

On a clear day, discover the Siebengebirge, Cologne Cathedral or the Bergisches Land on the horizon. But above all: enjoy the feeling of space and tranquillity that the Börde gives its viewers as a matter of course.

Village walks

Fancy exploring new territory? Then we recommend a visit to the Börde villages in the Rur-Eifel region. It is very worthwhile to discover their historical, architectural, cultural and natural beauty. Above all, however, the noticeable charm of rural peace and village integrity. We have signposted eight village tours with walking times usually under an hour. You will find



the relevant information on the website indicated for download or on the information boards at the respective starting points.

Hiking tours

Hiking offers through an open cultural landscape complement the paths that lead through deep gorges, dense forests and emerging wilderness in the other part of the Rur-Eifel. On the eastern edge of the Eifel, views widen and spectacular perspectives open up.

Cycle tours

Towards the east, the Eifel plateau with deep valleys and large areas of forest is replaced by the plain of the Rhine and the Börde. Here, things are a little more gentle for cyclists. We have developed three tours for you between Mechernich and the villages of the Rur-Eifel region. Two offers combine the charm of the Rur valley with the far-reaching views of the Börde, a third tour takes visitors along our moated castles and on the trail of the Romans in the Zülpicher Land region.

Contact:

Rureifel-Tourismus e.V.

An der Laag 4
52396 Heimbach
Phone +49 (0) 2446/805790
info@rureifel-tourismus.de
www.rureifel-tourismus.de
www.eifelboerde.de



Red Sandstone Route

40 km between the Rur and the rocky cliffs



The red sandstone route starts at the Kreuzau train station, leaves the local area and passes through the Ruraue up to Üdingen where the trail gradually climbs upwards. On the Mausau, hikers can pause to take in the impressive panorama of the Obermaubach reservoir. The route continues to wind its way on mainly natural paths over the Eugenienstein and above the Rather Felsen (rocky cliff) until it reaches Hindenburg Gate and the Christinenley group of rocks. This is where the motto of the Eifelstieg trail comes to life: „Where rock and water accompany you“. At the end of your hike, you will reach the old town of Nidegen.

From the market square in Nidegen, the red sandstone route initially runs below the castle, then it continues along the Effels cliffs and through the Köhlenbusch to Abenden. Between Abenden and Hausen, it skirts along the edge of the National Park Eifel for the first time and in the last 5 kilometres until Heimbach, hikers only pass Hausener Busch. This is however reached in no time and the smallest town in North Rhine-Westphalia boasts some fantastic dining facilities.

From Heimbach, the route now climbs steadily through the National Park to the „Black Cross“ on the Kermeter and the „Wilder Weg“. Now the descent to the Urft dam wall follows, where you meet the Eifelstieg after a little more than 40 km.



Fotos: © Michael Sängler

Between Kreuzau and Heimbach the route is „accompanied“ by the Rurtal railway. This is the perfect opportunity for hikers to go railway hiking: You can start and end your individual hike at one of 11 stops or break up the tour with a short train ride to get to your next stop on the red sandstone route.

Book your hiking tour now on the red sandstone route

- 2 nights including breakfast with climate-friendly hosts
- Eifel Guest Tickets for free use of the public transport services
- 2 packed lunches
- Rursee boat trip - from
- 145 EUR per person, in a double room



Contact: Rureifel-Tourismus e.V.

An der Laag 4
52396 Heimbach
Phone +49 (0) 2446/805790
info@rureifel-tourismus.de
www.rureifel-tourismus.de



Historial Literary Trail Eifel

On the trail of history in the Hürtgenwald -
with or without accompaniment



The area around Huertgen Forest has opened up to reveal its dramatic military past: bunkers, tank traps, traces of munitions, cemeteries for the fallen. The Konejung Foundation: Culture has worked through this part of our history and brought it back to life. The Kall Trail, the Heinrich-Böll Trail and the Hemingway Trail join four other themed circuits to create the „Historical Literary Trail“: a multi media journey over 40 kilometres long.

Historic film recordings and photos, cards comments and interviews give additional information on the fights, their background and literary description.

Time Travel Eifel project

Applying historical knowledge for the purposes of tourism. There are personal history guides for visitors (who can be booked) who can provide facts and background knowledge rather than just keywords, so they are able to clarify myths when you go on tour with them. Where you decide to go with them, which topics you want to focus on, and what media you use is decided on a completely individual basis. Every guide provides his/her knowledge with a personal approach.

This makes the experience rich in its diversity as, for example, history is seen in motion or historical clues are linked with impressive natural surroundings.



Each of the guides connects her/his knowledge with a personal approach. The result is a multi-faceted offer, at which e.g. history meets movement or historical investigation is connected with impressive nature experiences. Look for something that meets your preferences and interests. Contact the Rureifel or directly one of the guides, in order to discuss your wishes.



Historisch-literarischer
Wanderweg

Contact:

Rureifel-Tourismus e.V.

An der Laag 4 · 52396 Heimbach
Phone +49 (0) 2446/805790
info@rureifel-tourismus.de
www.rureifel-tourismus.de

The flyer folder

... on the „Historic-literary hiking trail“ is available in German and English for a price of 3.00 Euros in the Tourist Information Office. On request it will be sent by post for 5.50 Euros



Hikes

around Nettersheim



Experience the diverse low mountain landscape with all its treasures in flora and fauna, ground monuments, good air and silence on the **hiking trails** in our beautiful Eifel municipality of Nettersheim. Whether you are out and about on your own or with one of our staff, who impart a lot of interesting information in a fun way: The lush flora and fauna in the changing seasons, springs, streams and forests offer tranquillity and variety at the same time. Step by step, get away from the hustle and bustle of everyday life. In the **Archaeological Landscape Park** you can follow in the footsteps of the Romans, experience 20 exciting stations on the Dandelion Adventure Trail, listen to an insider's explanations during our homeland hikes and much more. The Eifelsteig, the Roman Canal Trail, the Way of St. James, the Eifel Spring Trail and the Eifel Herb Trail as well as EifelLoops and EifelTracks and other themed trails lead through our municipality. Hiking is not only sustainable, but also particularly good for body, mind and soul.

The team at the Eifel Nature Centre in Nettersheim offers inspiration and information.



Re-opening planned in spring 2023 Urftstraße 2-4, 53947 Nettersheim



currently: Tourist Info in the „House of Fossils“, Bahnhofstraße 50, 53947 Nettersheim
Phone +49 (0)2486/1246
naturzentrum@nettersheim.de
www.naturzentrum-eifel.de



From the Neanderthals, from Celts and Romans

Roman canal hiking trail and cycle path „Agrippastraße“ in a picturesque landscape



Photo: Stadt Mechernich/Haliph Sondermann

Where mammoths and reindeer once sought refuge, where the water flowed through the air, there, at the foot of the Eifel is Mechernich, a modern town with a fascinating history, on the outskirts of the Eifel National Park.

The Neanderthals once lived in the Kakus Caves in Dreimühlen. The caves and winding paths, the legends and stories about the giant Kakus make for a very special experience - for young and old alike. Tours, events and treats in the café are also included in the programme.

In the „Roman road experience room“ the Roman trunk road from Cologne to Marseille is brought to life. Explore the „Agrippastraße“ in Mechernich on a designated cycle path. The Romans also left visible traces in the construction of a water supply line to Cologne. There are numerous relics waiting to be discovered in Mechernich on the Roman canal trail.

Contact details:

Stadt Mechernich
Bergstr. 1
53894 Mechernich
Phone +49 (0) 2443/49-4322 oder 4320
Fax +49 (0)2443/49-5322
touristik@mechernich.de
www.mechernich-eifel.de



Health Resort Kronenburg

Pure romance in the picturesque castle town of Kronenburg



The excursion destinations and offers in the village of Kronenburg in the municipality of Dahlem are very diverse. The historic **castle town** with its picturesque alleys and restored houses towers above the famous Kronenburg Lake. From the highest point on the **castle ruins**, you have a wide view of the Kyll valley. In the **Hasenberg-Hof of the Dr. Axe Foundation**, the focus is on culture. In the valley on the Kyll lies the small **Brigida Chapel** with the old stone bridge.

Lake Kronenburg offers numerous opportunities for water sports. In addition, the 130 km **Kyll cycle path** runs along the lake. The network of hiking trails around Kronenburg is made up of the new EifelSchleifen (EifelLoops) and EifelSpuren (EifelTracks).

The Kronenburg Art and Culture Days take place every year on the second weekend in September. On the first weekend in Advent, **one of the most beautiful Christmas markets** in the Eifel traditionally takes place in the decorated historic town centre. Both events are absolute highlights of the year in the village.

Tourist Information: Eifelpark Kronenburger See

Zum Kleebusch 15
53949 Kronenburg
www.eifelpark-eks.de
www.dahlem.de
www.kronenburger-see.de

Nature reserve Schlangenberg

Unique calamine flora - a botanical rarity



© Eifel Tourismus GmbH, AR-shapefruitAG

In the Breinig district of Stolberg we find the Schlangenberg nature reserve. It is home to a botanical rarity that can only be found in a few places in the world. The calamine flora has developed where in earlier centuries the mining of zinc ore (calamine) was a priority and the soil is still very rich in metal today.

The yellow calamine violet in particular, which is unique in its presence and spread here, gives the nature reserve a special significance that is also known to experts beyond the region.

All information about flora, fauna, geology, mineralogy, ore mining and water extraction in the Schlangenberg nature reserve can be found in the neighbouring information centre. It is located in the former Breinigerberg secondary school, Breinigerberg 95, and has been run by the Eifel- und Heimatverein Breinig on a voluntary basis since 1991.

Opening hours:

March - November:
Sunday 2:00 p.m. - 5:00 p.m.

Contact for private guided tours:
info@eifelverein-breinig.de

Appointments for individual groups

also possible outside these times; please turn your inquiries to Heinz Rüttgers, Phone(0)2402 / 36909



Adventure community Kreuzau

Visit our popular recreation destinations



The municipality of Kreuzau is nestled in the idyllic Rur meadow landscape on the northern edge of the Eifel nature experience region, where the Eifel stretches out to the north, plunges into the Düren – Jülich plain and both natural areas connect and intertwine with each other.

The **hilly low mountain range landscape** of the Eifel that starts here, crossing over to the flat plains, the vast areas of forest, meadow valleys and the starkly carved Rurtal valley along with the Obermaubach reservoir offer a unique landscape. Because of the diversity and the variety of this exciting and ecologically precious natural landscape, the municipality of Kreuzau is regarded as popular recreation destination.

The municipality of Kreuzau is a very active town, with a good infrastructure, that is full of life in all aspects, from just living and working there to the active and peaceful opportunities for relaxation.

From among the various leisure activities on offer, the walks and hikes in particular promise rewarding experiences in nature and relaxation on every route. The Rurtal railway line Düren – Heimbach offers the perfect framework for railway walks, and can also be used as a link to the Eifel National Park or to shorten several hiking routes or be used for the return journey.

Visit the central site of Kreuzau as a starting point for the main trails of the Eifelverein (4) Josef-Schramm-Weg and (5) Willi-brordusweg, as well as the Eifelsteig partner trail, the „Buntsandstein-Route“.

On many great hiking trails, such as for example the theme trails „Water experience trail“ (62), „Panorama trail west“ (72), the „Roky passage“ (07), as well as on local loop trails, you will encounter numerous attractions such as historic monuments, castles and mill ponds. The Eifel views „Hemgenberg“-Winden, „Schafsbenden“-Bogheim and „Waldkapelle Obermaubach“ as well as the viewpoint „Engelsblick“ can all be reach on several sign-posted hiking routes. They offer impressive views stretching far beyond the municipal borders and compel you to stop and take a break. The Rur-Ufer bicycle trail runs in the valley alongside the Rurtal railway.

Obermaubach is a recreational and tourist destination with its magical setting by a drinking water reservoir, the highest fish pass in North Rhine-Westphalia and a water bird breeding area. Because of its idyllic location and the varied hiking area around the reservoir and in the high Mausaeuler Wald und areas, Obermaubach represents a highly frequented and popular day trip destination.

Convivial and hospitable hosts will tempt you with specialties and culinary delights from the



Eifel region. Quiet and scenically located properties are available every season for accommodation during your stay.

Other activities include cycling, mountain biking, paragliding, canoeing, horse riding, fishing and nearby climbing in the rocks of the Rur valley. Families with children will find variety on boat trips, in the forest playground and on the forest and water nature trail. The range of activities is rounded off by the monte mare sports and leisure pool and the new skate and exercise park in the central town of Kreuzau. Information on the wide range of leisure activities is available from the kiosk at the water reservoir.

A very special highlight for those in search of rest and relaxation is the Drover Heide nature reserve (European bird sanctuary), which is of national importance as a habitat for rare and endangered plants and animals. The beauty of this landscape can be seen whilst walking on the designated paths that are 2.2 km (barrier-free way with viewpoint) to 14.1 km long.

In the midst of the Drover Heide, an archaeological hiking trail, the „Drover mountain tunnel trail“, which starts at the source „Helje Pötz“, guides you to traces of a technical masterpiece of Roman architectural engineering. Guided hikes in the municipal area are offered each season. Numerous events on nature and culture are held as well as local and village festivals. Find out more on our website:

www.kreuzau.de

You are always welcome in the town of Kreuzau!

Contact details:

Municipality of Kreuzau

Bahnhofstraße 7, 52372 Kreuzau
Phone +49 (0) 2422/507348
www.kreuzau.de

Rureifel-Tourismus e.V.

An der Laag 4
52396 Heimbach
Phone +49 (0) 2446/80579-0
www.rureifel-tourismus.de

Daffodil flower in the Oleftal

The yellow carpets of flowers in the North Eifel Nature Park



A unique scenario is created in the idyllic meadow valleys of the upper Olef Valley at the end of March until the beginning of May. Millions of the wild „yellow daffodil“ stretch their heads towards the sun and turn the meadows in the area of the Nature Park North Eifel into yellow carpets of flowers. The heralds of spring are difficult to distinguish from their garden sisters, the Easter daffodils; wild daffodils are only a bit smaller.

Along the sign-posted circular hiking routes you can explore the floral magic on your own initiative or with well-informed guides. Starting point always is the parking place “Hollerather Knie“ near Hellenthal-Hollerath at the B265.

Every two years the municipality in cooperation with the Nature Park North Eifel and the NRW foundation takes the blooming of the daffodil as an occasion to celebrate the daffodil festival.

Tourist-Information and National Park Information

Office Hellenthal
Rathausstraße 2 · 53940 Hellenthal
Phone +49 (0) 2482/85 115
Fax +49 (0)2482/85 114
tourismus@hellenthal.de
www.hellenthal.de

Guided tours to the daffodil meadows

The dates of the guided walks can be found at www.hellenthal.de. The next Daffodil Festival will take place in Hollerath in April 2024..



EifelTrack Sun, Moon and Stars

Hiking under the stars on the edge of the
Eifel National Park



© Dominik Keitz



© Stadt Schleiden

Watch the moon and the stars of the Milky Way with the naked eye. The EifelTrack (EifelSpur) bears its name because the celestial bodies are clearly visible on numerous nights due to the low light pollution. To really enjoy these moments, binoculars and a camera should be in your hiking backpack. But even without technical equipment, this hike through the northern Eifel at night is a special experience.

But the trail also has a lot to offer during the day: For example, the eight-kilometre hike takes you through a dreamlike landscape. While hiking through the Scheckenbach Valley and the Schaftbach Valley nature reserve, you will experience the peace and quiet of nature.



Guided adventure hike on the EifelTrack Sun, Moon and Stars on Sunday, 28 October 2023:

Explore the EifelTrack Sun, Moon and Stars on the edge of

the National Park together with experienced star guides and a hiking guide and then watch the starry sky at Eifel-Blick in Dreiborn. The approximately eight-kilometre hike starts at 4 p.m. at the sports field in Dreiborn. On the way, a small snack awaits you at a stopover. As soon as darkness falls, it's time to see the stars: the star guides will bring you a little closer to the night sky with telescopes. After-

wards, a buffet dinner will be served in the multi-purpose building at the sports field.

Registrations for the free hike as well as for the dinner (participation voluntary, on a self-pay basis) are required by 20 October 2023. The number of participants is limited.

Our tip: The EifelTrack and nineteen other circular and theme trails in the Schleiden valley and on the heights invite you to explore the unique landscape. The brochure „Wandererlebnis“ (hiking experience) with all routes is available free of charge at the Tourist Information and National Park Info Point in Gemünd.



Contact:
Tourist-Information und Nationalpark-Infopunkt Gemünd
Dreiborner Straße 59
53937 Schleiden
Phone +49 (0)2444 / 2011
www.naturerlich-eifel.de



Ginsterblüte

AUF DER DREIBORNER HOCHFLÄCHE

**Goldener Tipp:
Ginsterblütenfest 2023
20. und 21. Mai 2023**

**Wandererlebnis:
Eifelverein-Tour 31
„Rund um Dreiborn“**

**Tourist-Information und
Nationalpark-Infopunkt Gemünd**
Dreiborner Straße 59 . 53937 Schleiden
Tel. 02444 2011 . Fax 02444 1641
www.natuerlich-eifel.de



BEI UNS SEID IHR GANZ NAH DRAN

TIERISCHER SPASS IM WILDPARK

Euer Familienausflug in unseren Park wird ein unvergessliches Naturerlebnis. Erlebt Wildtiere ohne störende Zäune in großen Freigehegen, Greifvögel beim Flugtraining und zahme Tiere im Streichelzoo. Zusätzlich bieten wir ein liebevolles Programm für Kindergeburtstage und in den Ferien.

**WILDPARK FRÜHSTÜCK
IM CAFÉ & BISTRO**
AN SONN- UND FEIERTAGEN
9:30 – 11:00 UHR

RESERVIERUNG ERFORDERLICH
+49 24 74 - 215

WILDPARKSTRASSE
52385 NIDEGGEN-SCHMIDT
INFO@WILDPARK-SCHMIDT.DE
+49 24 74 - 215

GUTSCHEINE, TIERPATENSCHAFTEN, JAHRES-
UND MONATSKARTEN GIBT'S IM ONLINE SHOP.

WEITERE INFOS AUF UNSERER HOMEPAGE:

WILDPARK-SCHMIDT.DE

  WILDPARK SCHMIDT


WILD PARK
SCHMIDT